

TOK

COMMERCIAL

NEON PLAZA

1228 - 1234 CALDWELL BLVD | NAMPA, IDAHO



CALDWELL BOULEVARD FRONTAGE RETAIL SPACE FOR LEASE!

MOSES MUKENGEZI

208.947.0836

moses@tokcommercial.com

BRIANNA MILLER CCIM, CLS

208.761.9373

briannam@tokcommercial.com

HIGHLIGHTS

Excellent high traffic location with high visibility pylon signage on Caldwell Boulevard.

One signalized entrance and four unsignalized entrances into center.

Across from the newly remodeled and expanding District 208 (former Karcher Mall) including 288 unit residential development.

Prime end-cap space in Nampa's main retail corridor, surrounded by major national retailers including Lowe's, Costco, Target, Home Depot, Ross, Kohl's, Staples, WinCo, Zamzows, and Deseret Industries.

SPACE:	RSF:	RATE:	MONTHLY:
Ste 1228	1,488 SF	\$22.00/SF + NNN	\$3,661.72 per month
Ste 1234	1,300 SF	\$22.00/SF + NNN	\$3,199.00 per month

DETAILS

LEASE TYPE	NNN
EST NNN	\$7.53/SF
LEASE TERM	3-10 Years
BLDG. SIZE	9,150 SF
BLDG. TYPE	Multitenant Retail Center

CONTACT

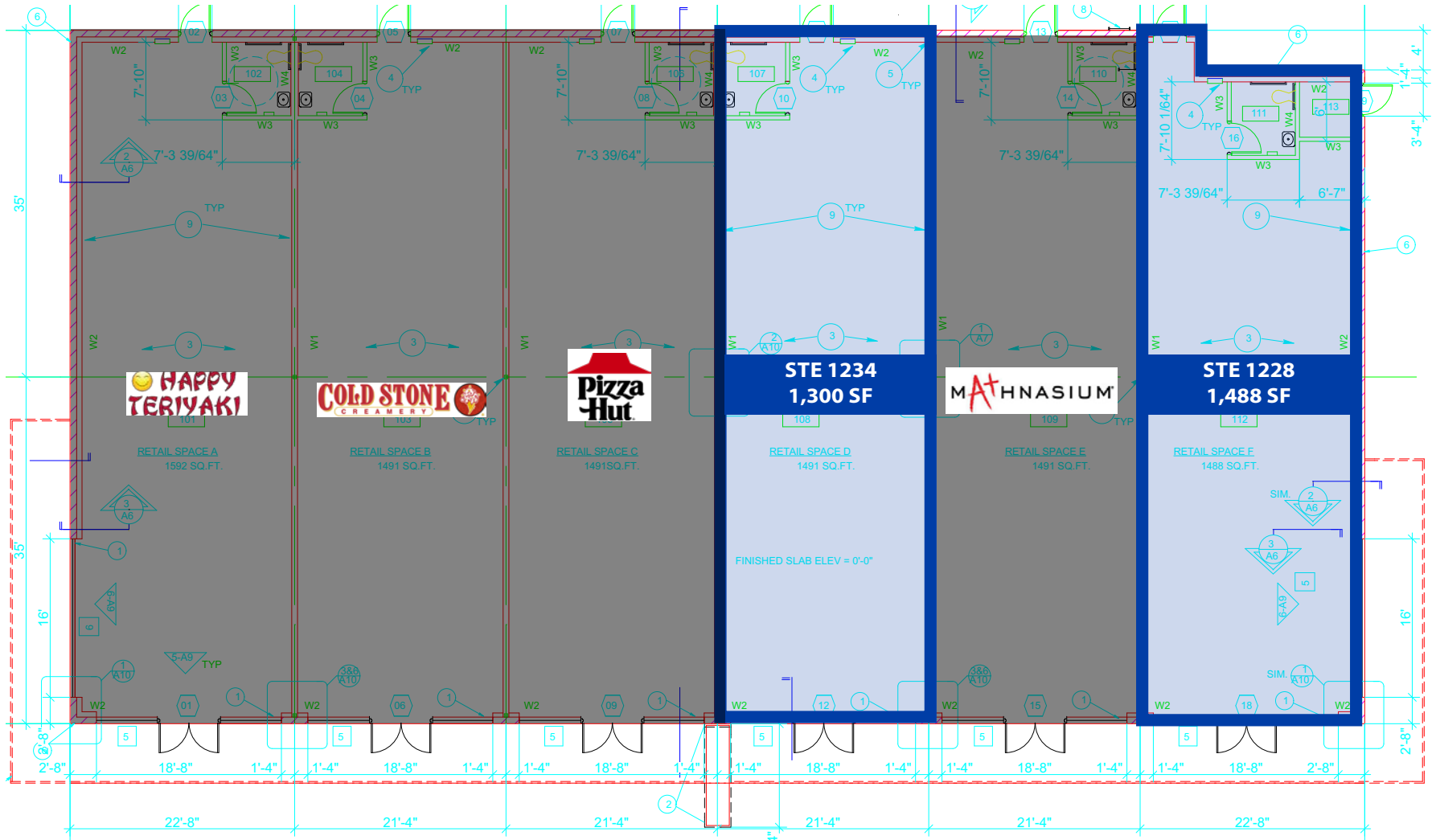


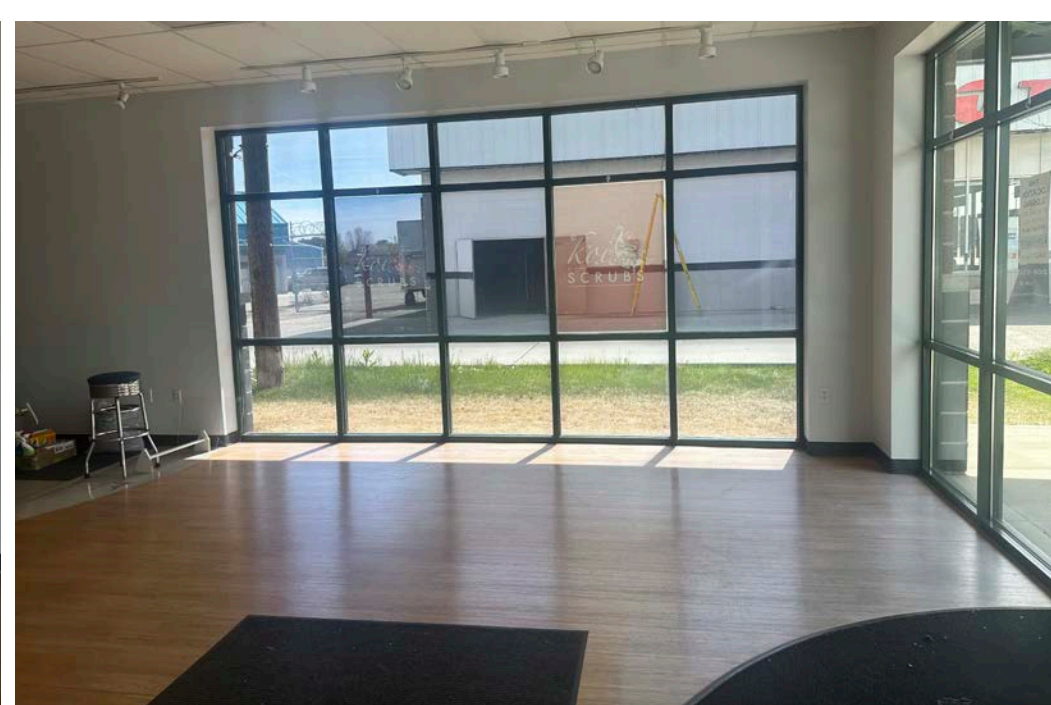
UPDATED: 01.18.2023

TOKCOMMERCIAL.COM



FLOOR PLAN





NEON PLAZA

TOXCOMMERCIAL.COM

TREASURE VALLEY MARKETPLACE

Staples

26,000 VPD

46,500 VPD Karcher Rd

26,093 VPD

27,000 VPD Caldwell Blvd

EXIT 33

DISTRICT 208

SITE