

SOUTH ELM INDUSTRIAL CENTER



Creek Ridge Road | Greensboro, NC

Available For Lease ±1,815 - 31,482 RSF

Jason Ofsanko
Executive Director
+1 336 812 3300
Jason.Ofsanko@cushwake.com

Jordan Mitchell
Managing Director
+1 336 201 0495
Jordan.Mitchell@cushwake.com



SITE PLAN

LEASED

AVAILABLE



101 Creek Ridge Road

±15,741 - ±31,482 TOTAL SF AVAILABLE


±28,988 SF WAREHOUSE SPACE

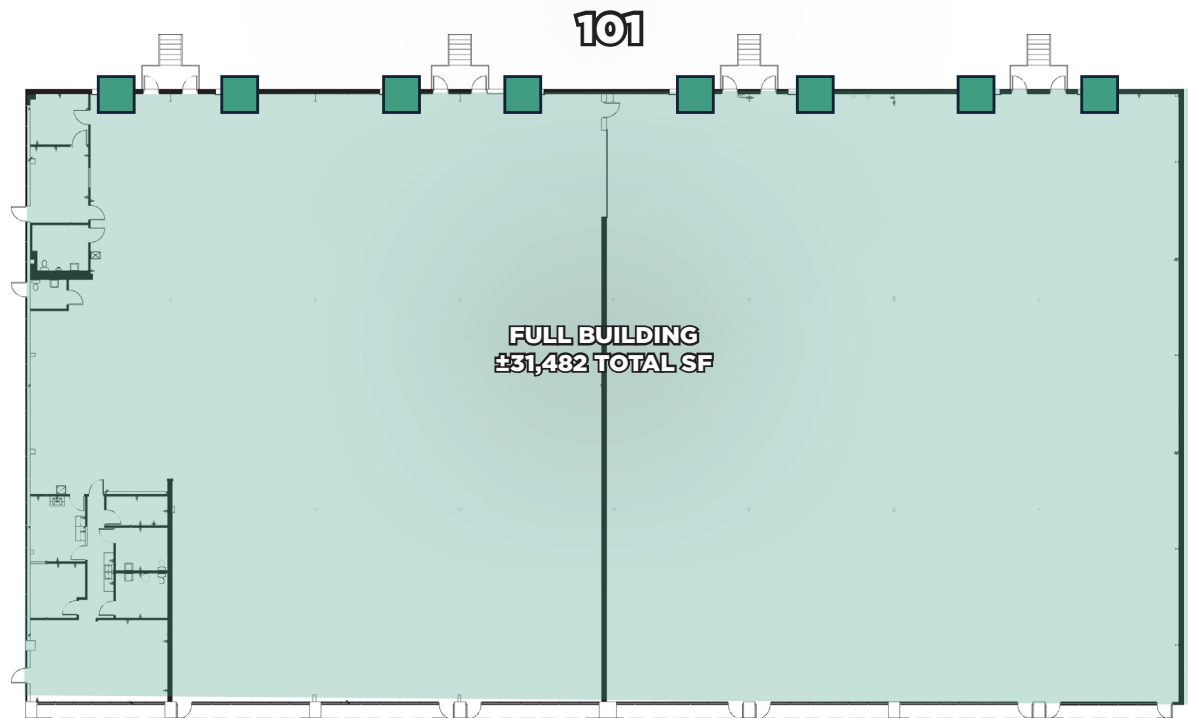
±1,686 - ±1,989 SF OFFICE

18' CLEAR HEIGHT

8 DOCK HIGH DOORS

SPACE CAN BE DEMISED

 = dock high doors



103-C Creek Ridge Road

± 3,000 TOTAL SF AVAILABLE

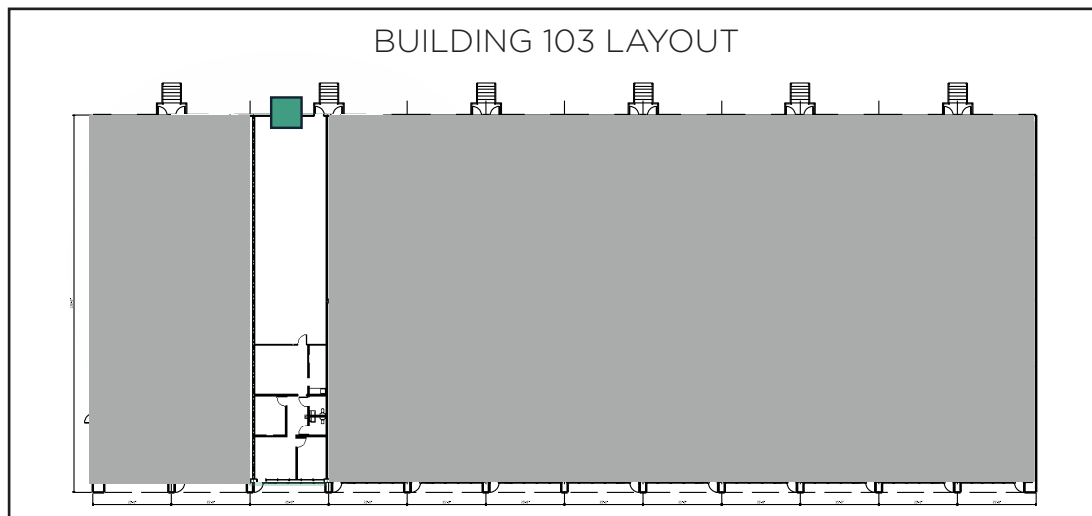
±2,600 SF WAREHOUSE SPACE

±400 SF OFFICE SPACE

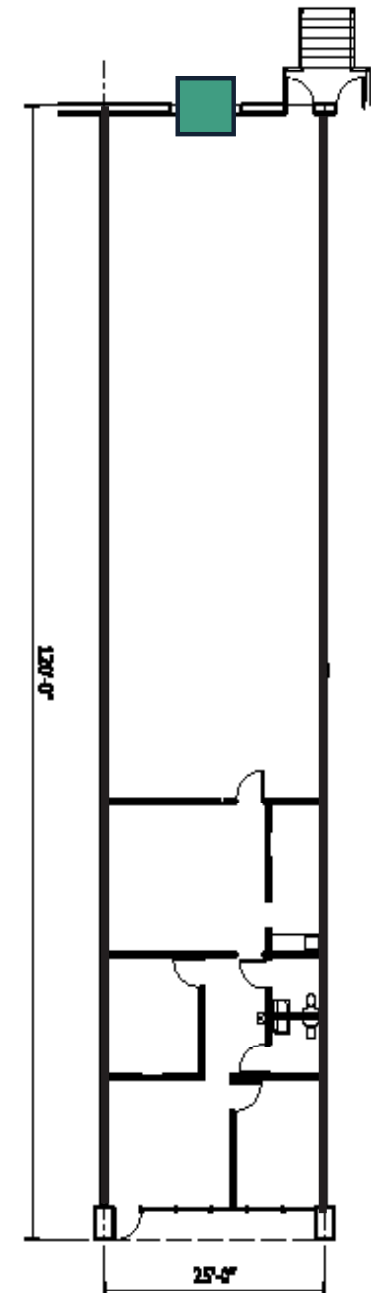
18' CLEAR HEIGHT

1 DOCK HIGH DOOR

FRONT PARK, REAR LOAD



■ = dock high door



103-D Creek Ridge Road

± 3,949 TOTAL SF AVAILABLE

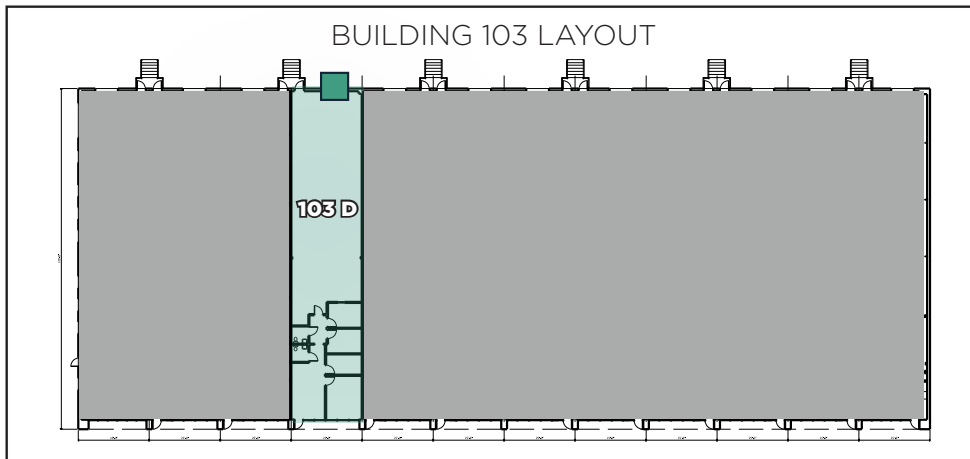
±3,000 SF WAREHOUSE SPACE

±949 SF OFFICE SPACE

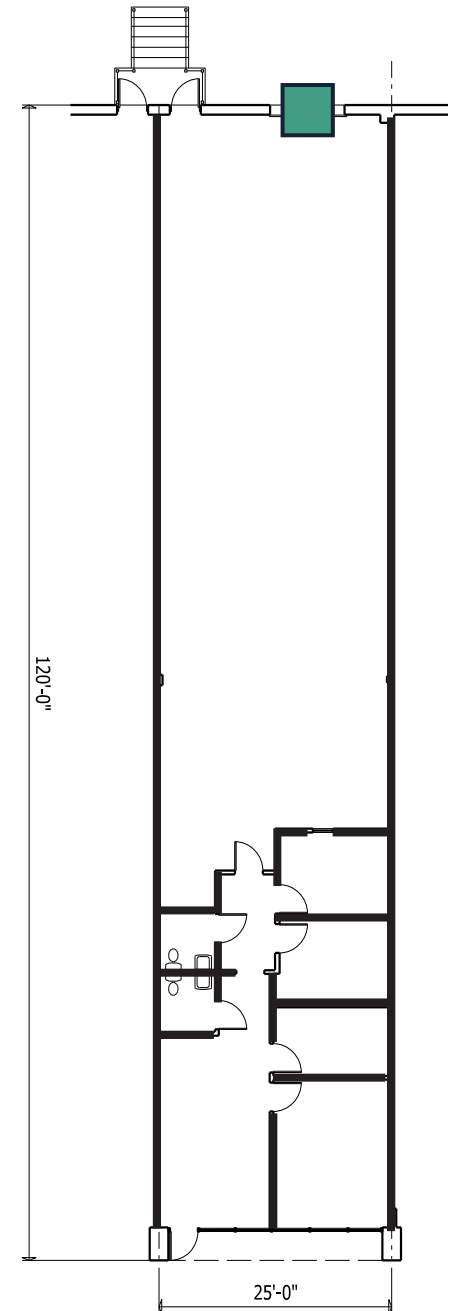
18' CLEAR HEIGHT

1 DOCK HIGH DOOR

FRONT PARK, REAR LOAD



■ = dock high door



103-E Creek Ridge Road

± 3,949 TOTAL SF AVAILABLE

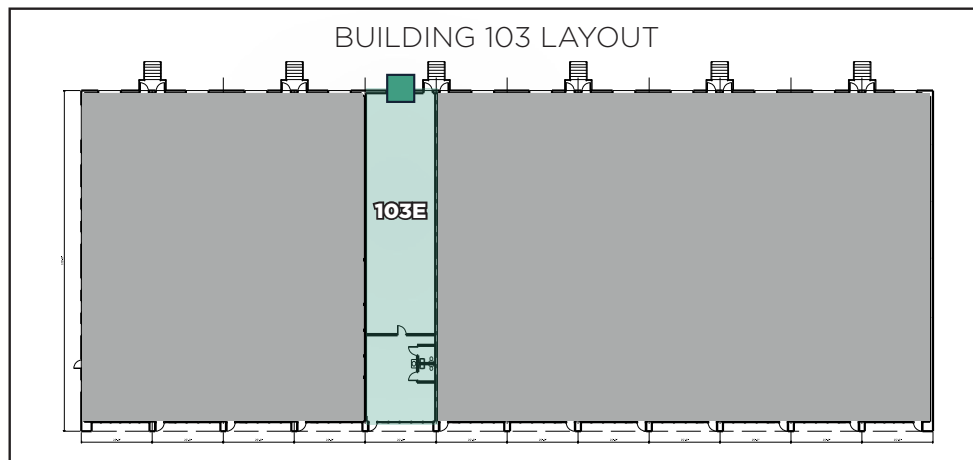
±3,000 SF WAREHOUSE SPACE

±949 SF OFFICE SPACE

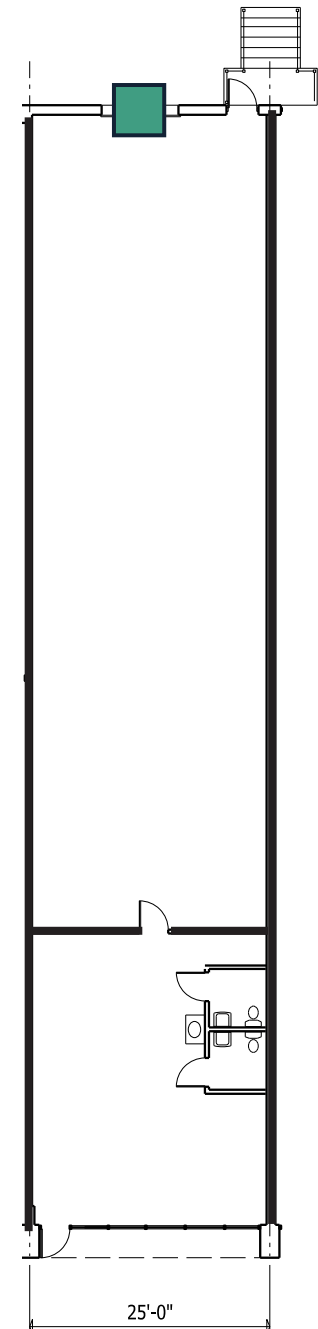
18' CLEAR HEIGHT

1 DOCK HIGH DOOR

FRONT PARK, REAR LOAD



 = dock high door



107-J Creek Ridge Road

± 1,815 TOTAL SF AVAILABLE

±1,282 SF WAREHOUSE SPACE

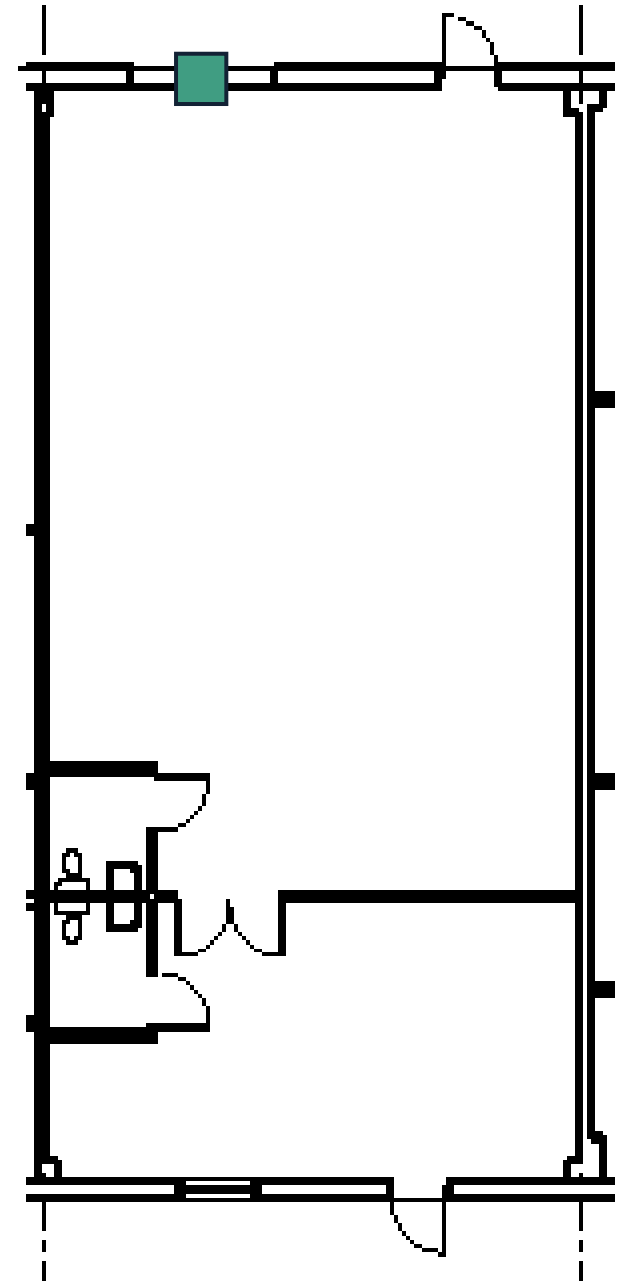
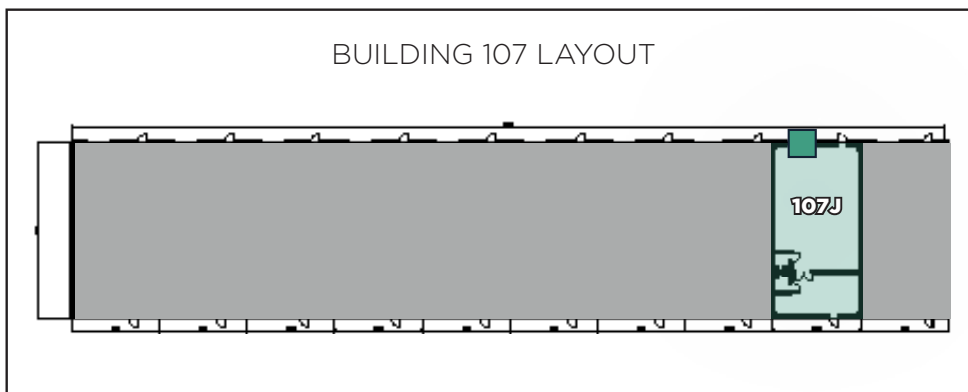
±533 SF OFFICE SPACE

18' CLEAR HEIGHT

1 DOCK HIGH DOOR

FRONT PARK, REAR LOAD

■ = dock high door



111-DE Creek Ridge

±4,800 - ±8,400 TOTAL SF AVAILABLE

±7,364 SF WAREHOUSE SPACE

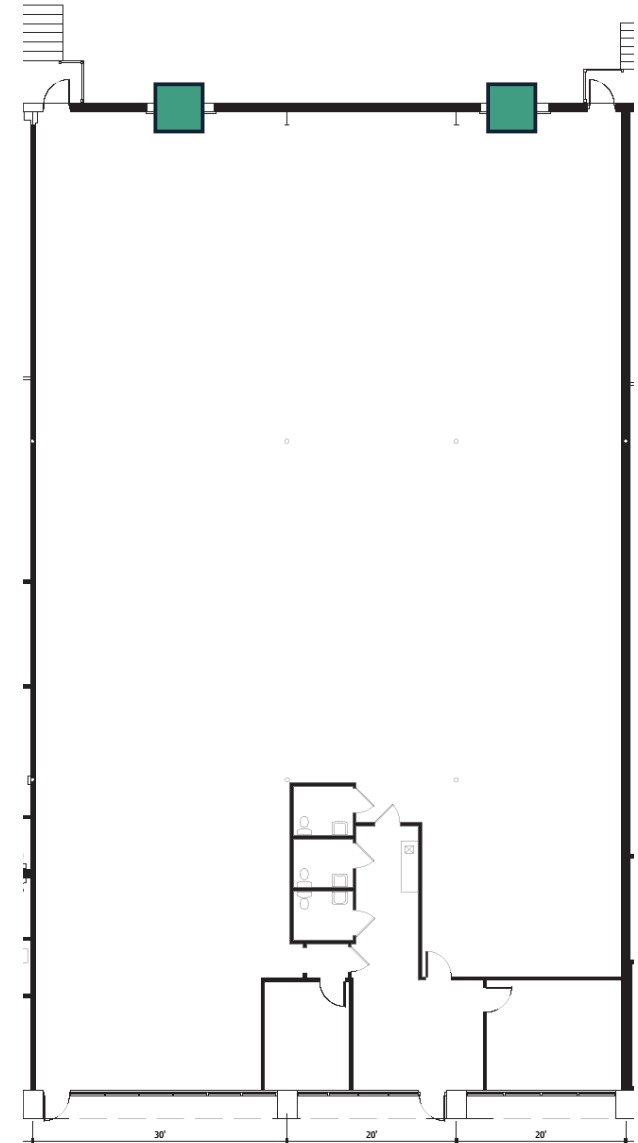
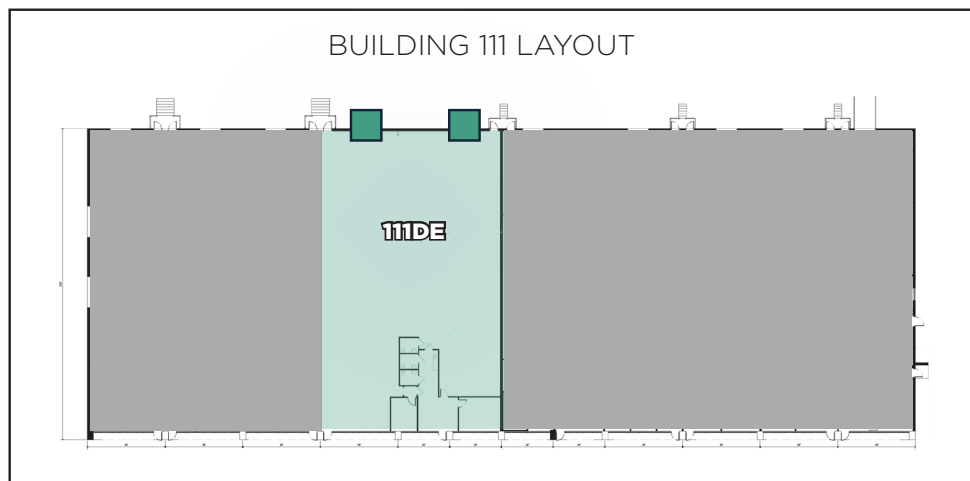
±1,046 SF OFFICE SPACE

16' CLEAR HEIGHT

2 DOCK HIGH DOORS

FRONT PARK, REAR LOAD

 = dock high door



111-FG Creek Ridge Road

± 8,400 TOTAL SF AVAILABLE

±6,233 SF WAREHOUSE SPACE

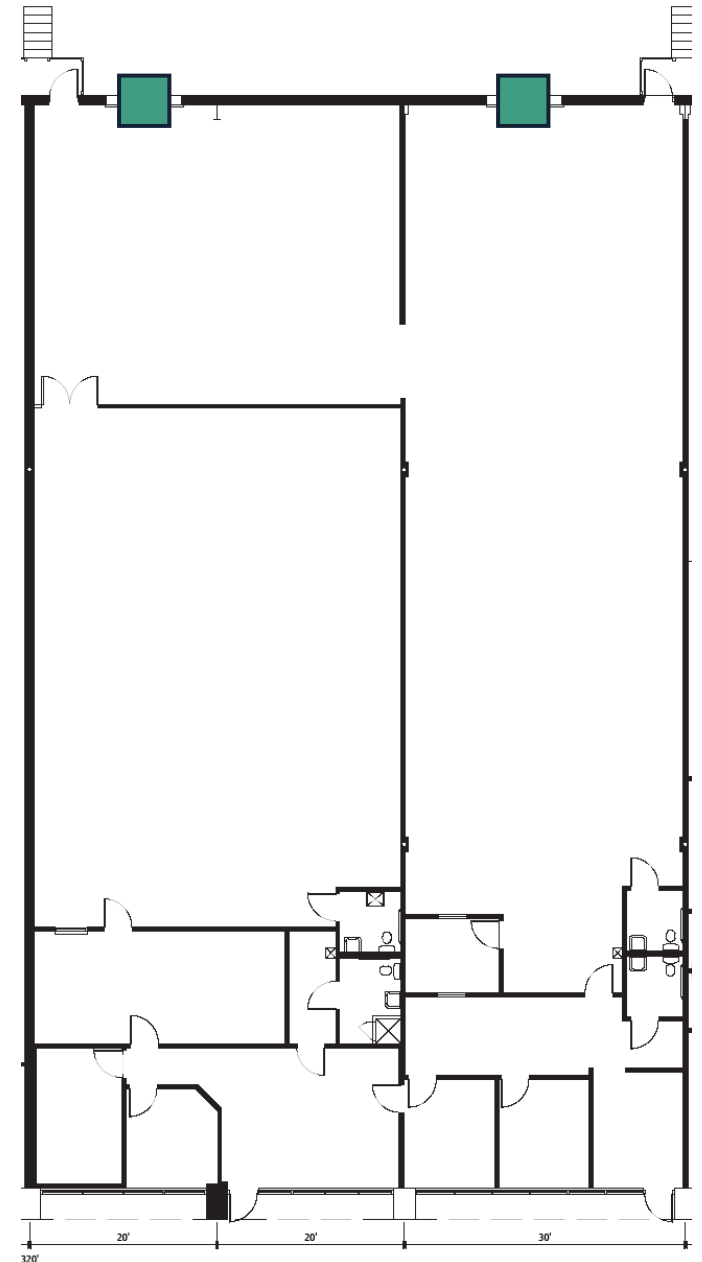
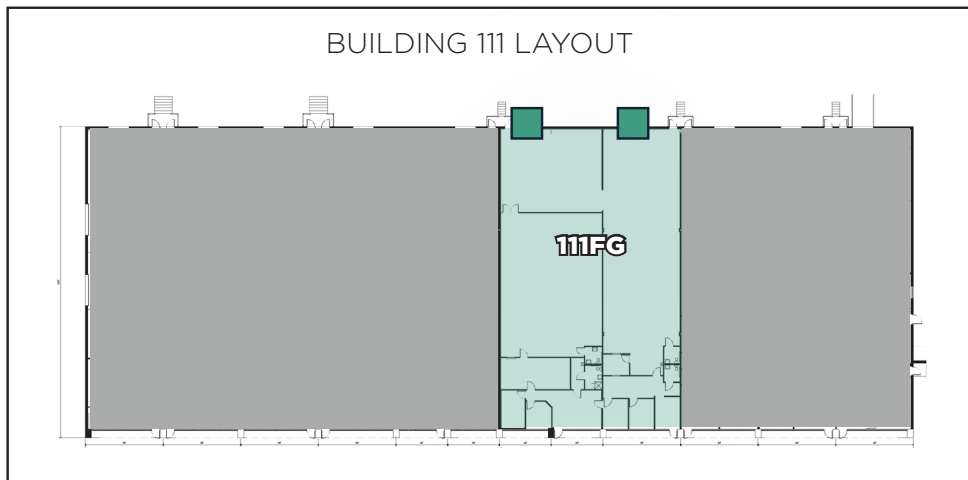
±2,167 SF OFFICE SPACE

16' CLEAR HEIGHT

2 DOCK HIGH DOORS

FRONT PARK, REAR LOAD

 = dock high door



111-H Creek Ridge Road

± 3,600 TOTAL SF AVAILABLE

±2,181 SF WAREHOUSE SPACE

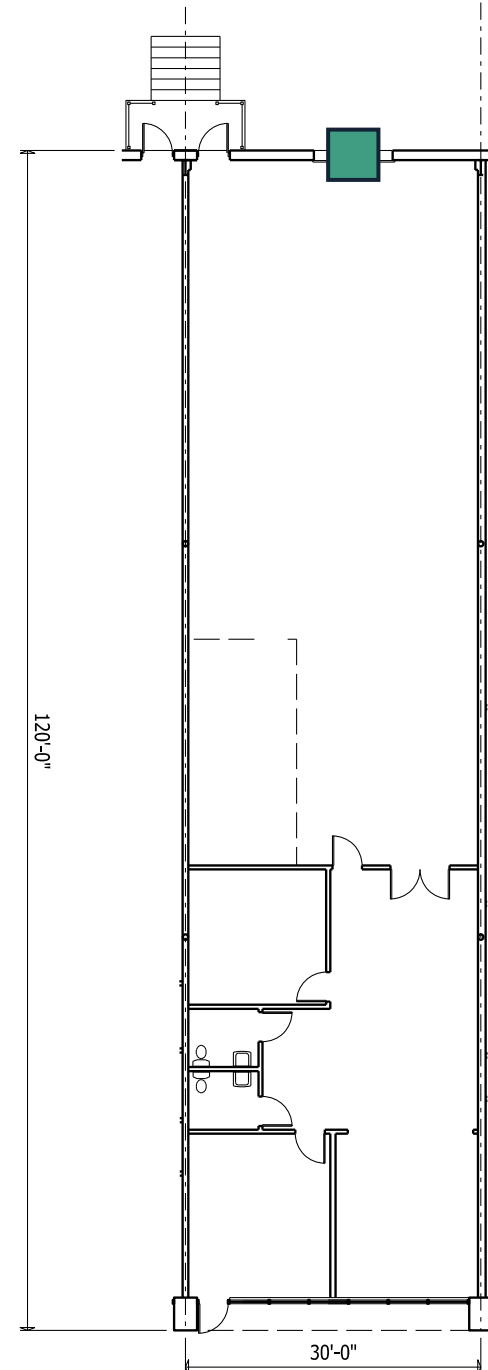
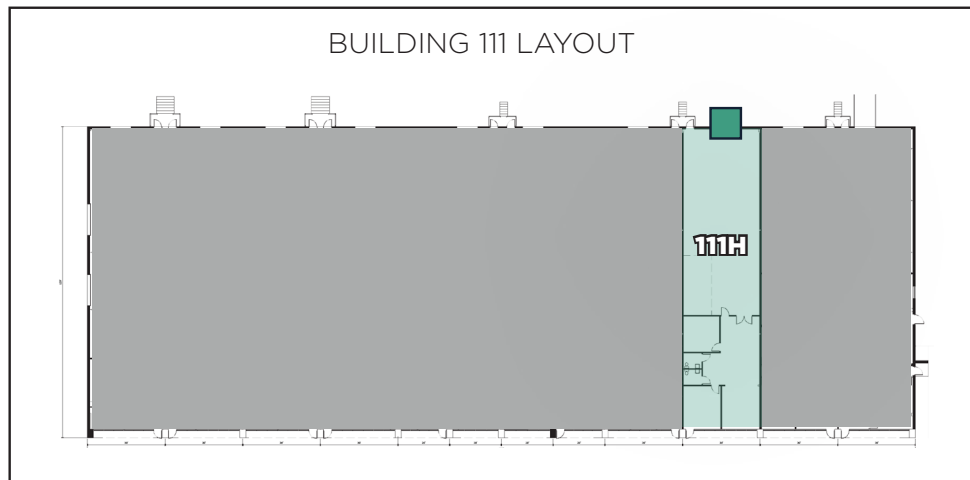
±1,419 SF OFFICE SPACE

16' CLEAR HEIGHT

1 DOCK HIGH DOOR

FRONT PARK, REAR LOAD

 = dock high door



201-F Creek Ridge Road

± 5,705 TOTAL SF AVAILABLE

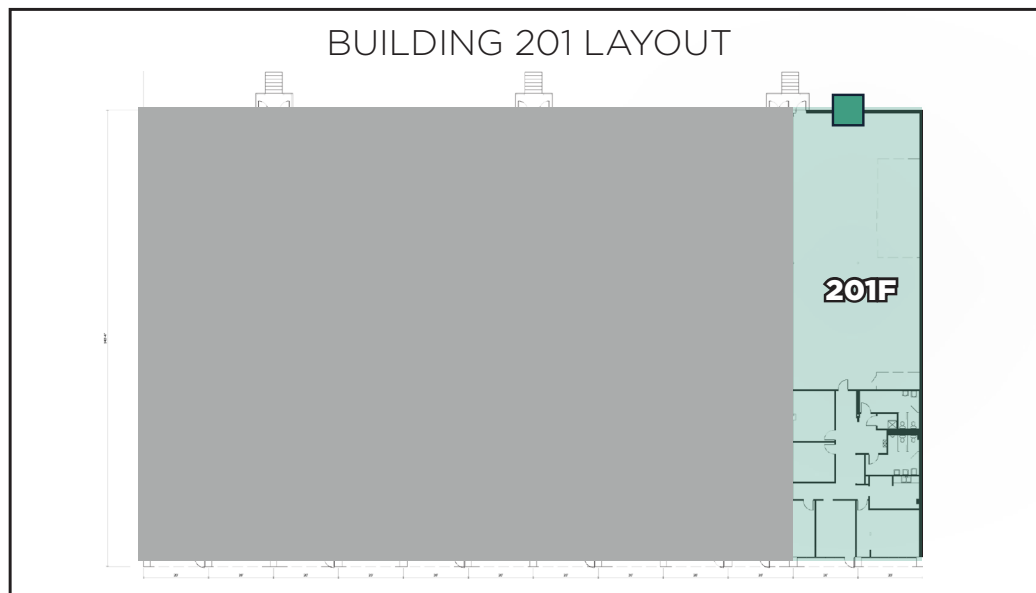
±3,439 SF WAREHOUSE SPACE

±2,266 SF OFFICE SPACE

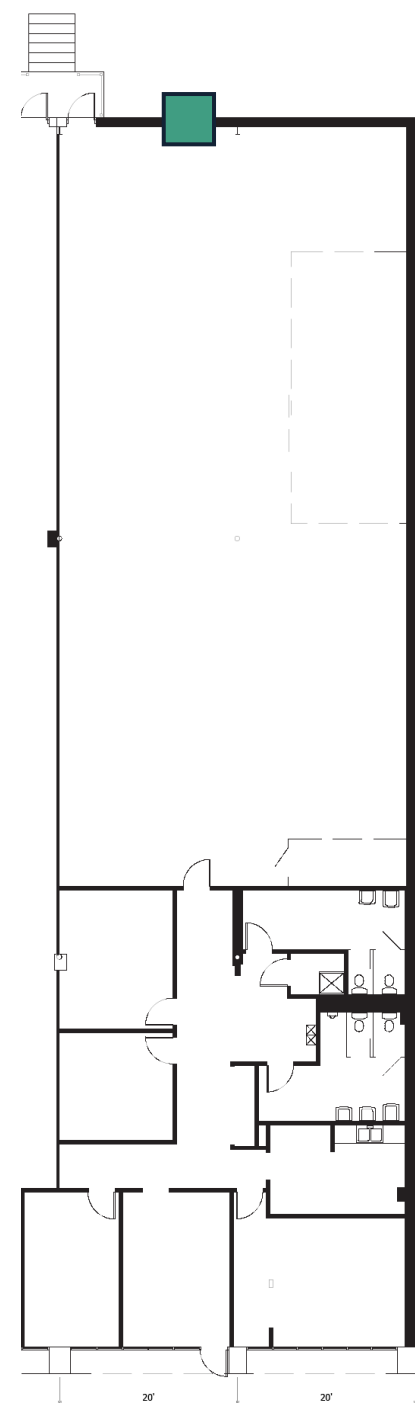
20' CLEAR HEIGHT

1 DOCK HIGH DOOR

FRONT PARK, REAR LOAD



 = dock high door



205-JK Creek Ridge Road

±5,993 TOTAL SF AVAILABLE

±4,761 SF WAREHOUSE SPACE

±1,231 SF OFFICE SPACE

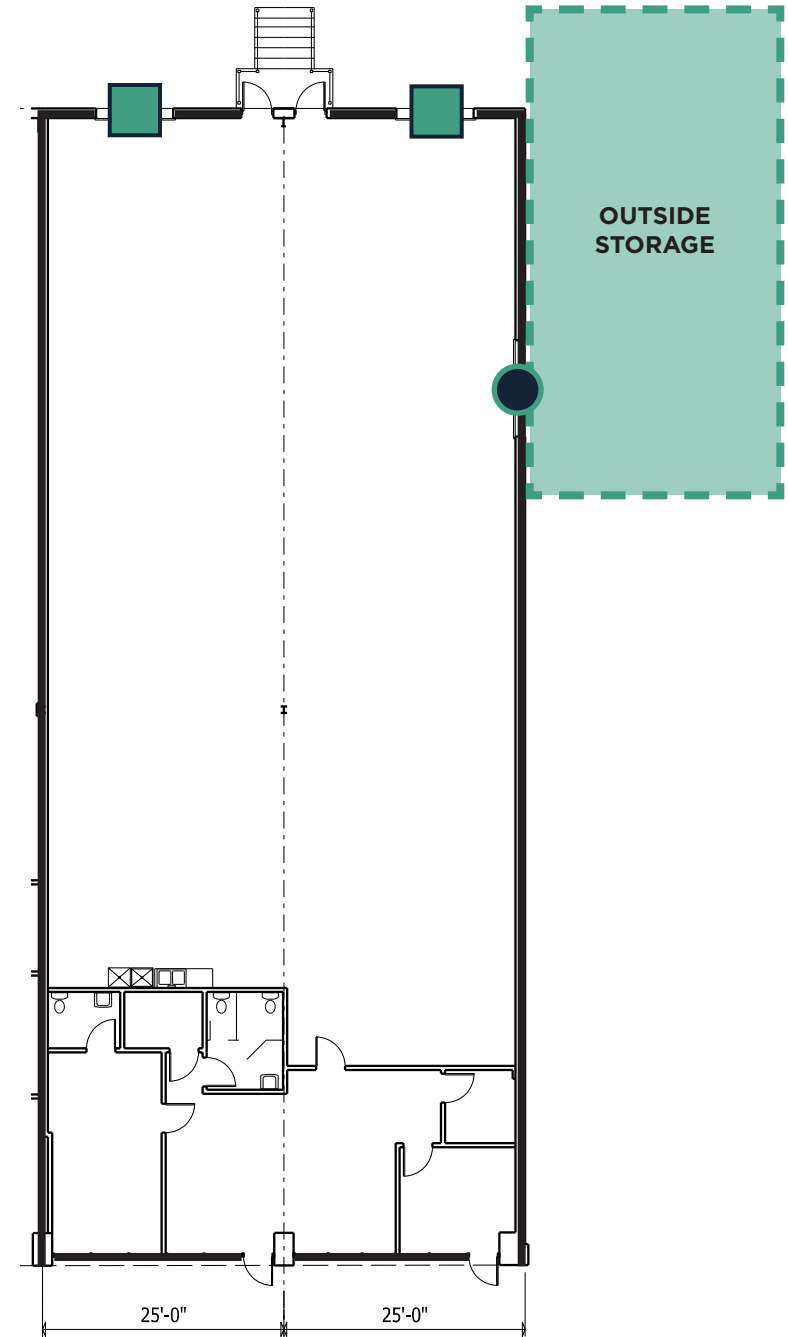
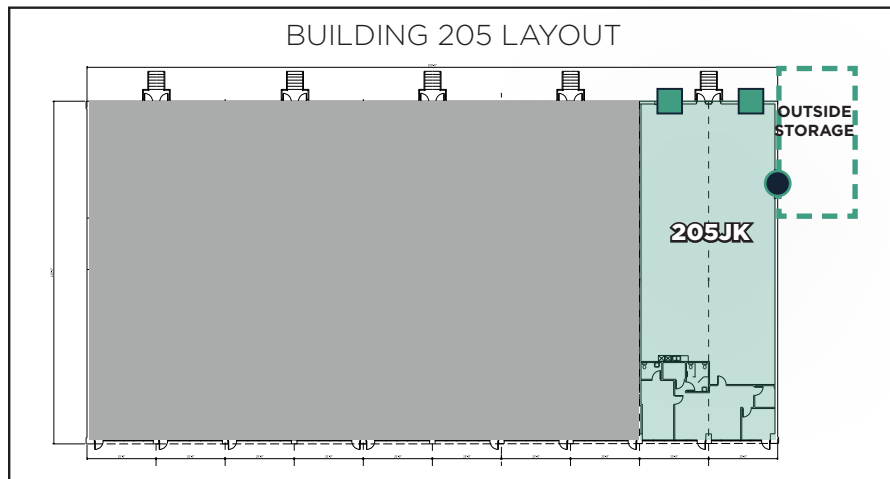
18' CLEAR HEIGHT

2 DOCK HIGH DOORS

1 DRIVE-IN DOOR

FRONT PARK, REAR LOAD

■ = dock high doors
● = drive-in door



209-BC Creek Ridge Road

± 11,200 TOTAL SF AVAILABLE

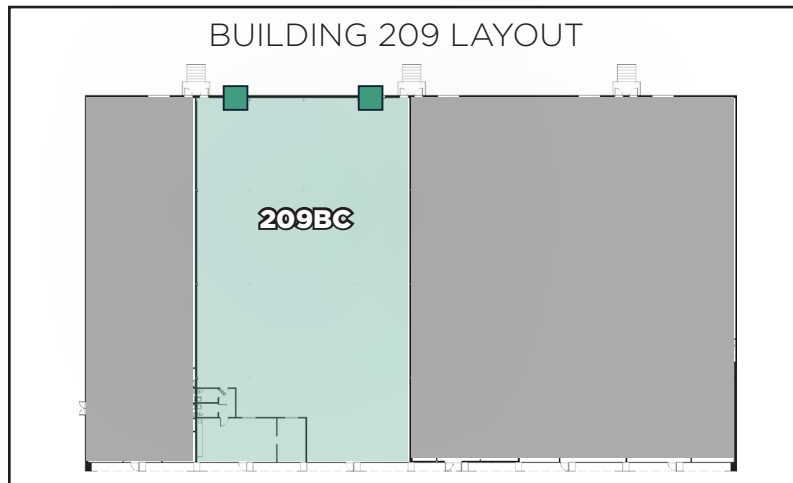
±10,209 SF WAREHOUSE SPACE


±991 SF OFFICE SPACE

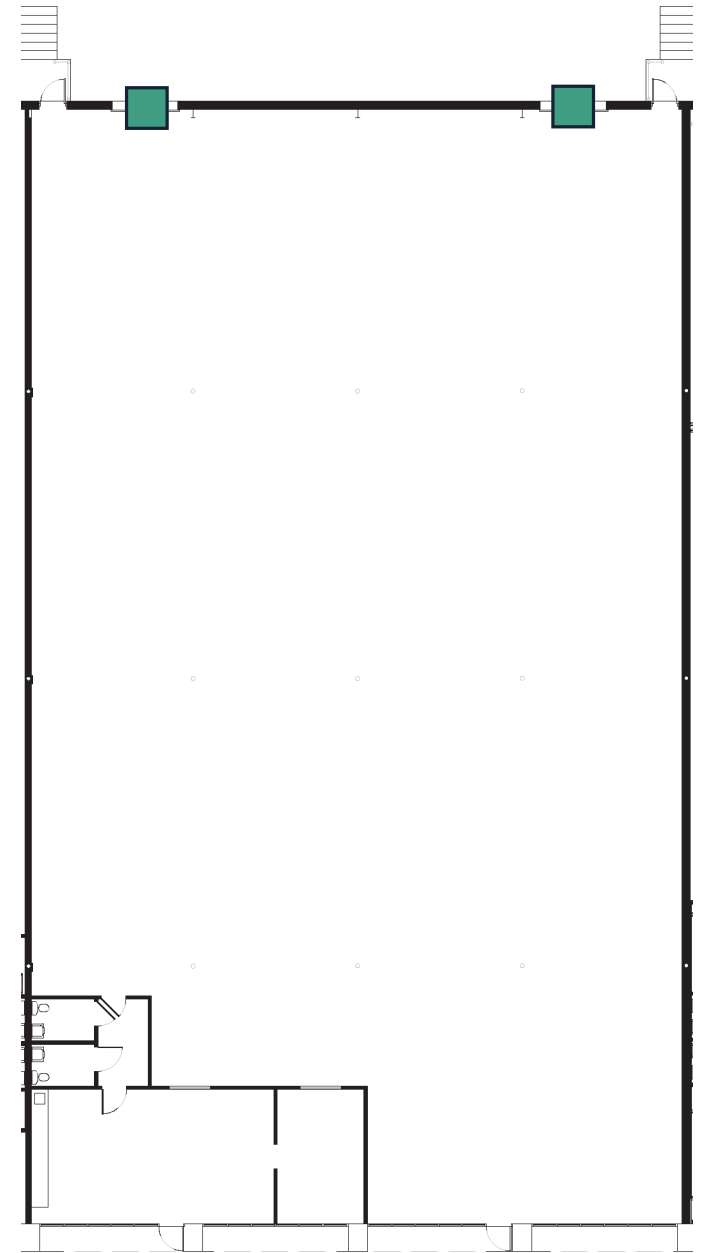
20' CLEAR HEIGHT

2 DOCK HIGH DOORS

FRONT PARK, REAR LOAD



 = dock high doors



209-DE Creek Ridge Road

± 11,200 TOTAL SF AVAILABLE

±9,520 SF WAREHOUSE SPACE

±1,680 SF OFFICE SPACE

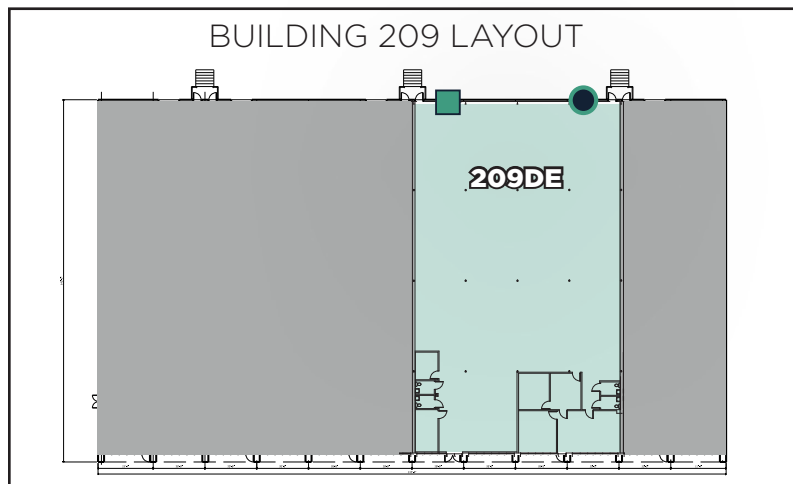
20' CLEAR HEIGHT



1 DOCK HIGH DOOR

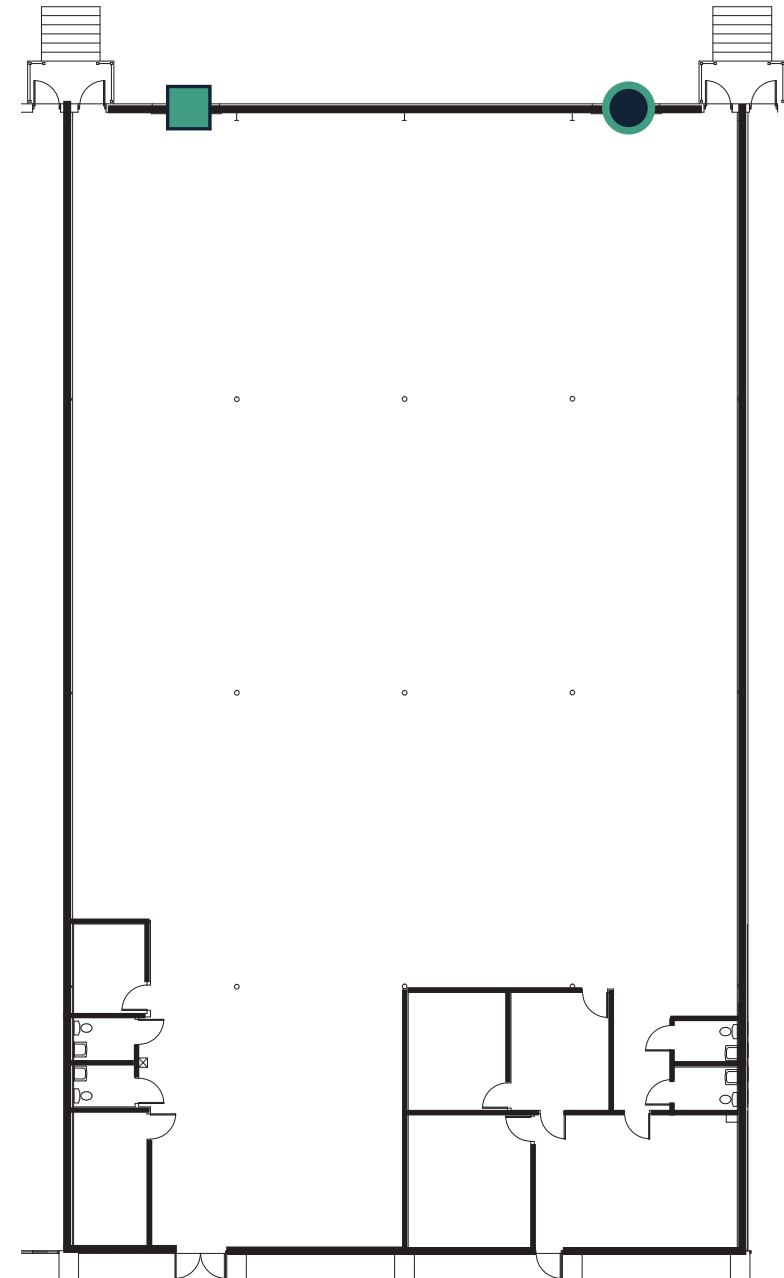
1 DRIVE-IN DOOR

FRONT PARK, REAR LOAD

FULLY CONDITIONED



-  = dock high door
-  = drive-in door



209-F Creek Ridge Road

± 5,786 TOTAL SF AVAILABLE

±5,409 SF WAREHOUSE SPACE

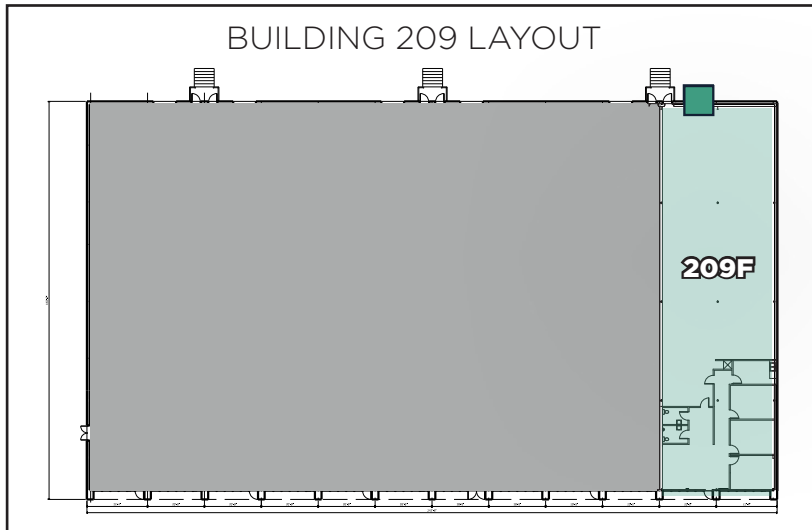
±377 SF OFFICE SPACE

20' CLEAR HEIGHT

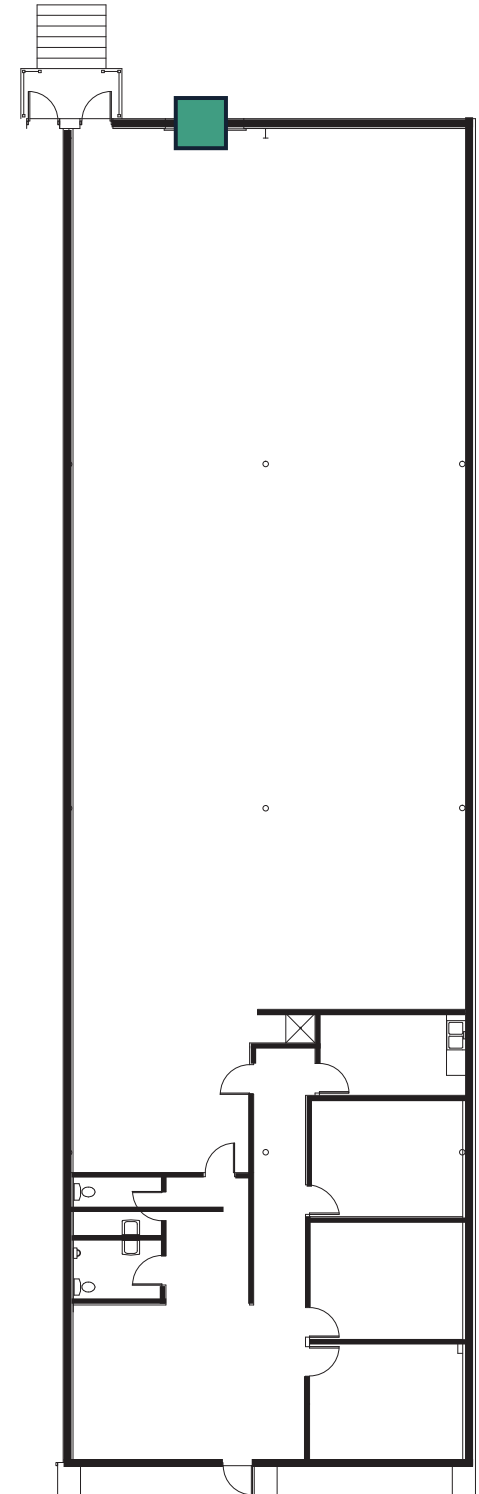
1 DOCK HIGH DOOR

FRONT PARK, REAR LOAD

FULLY CONDITIONED



 = dock high door



211 Creek Ridge Road

± 9,976 TOTAL SF AVAILABLE

±6,332 SF WAREHOUSE SPACE

±3,644 SF OFFICE SPACE

18' CLEAR HEIGHT

2 DOCK HIGH DOORS

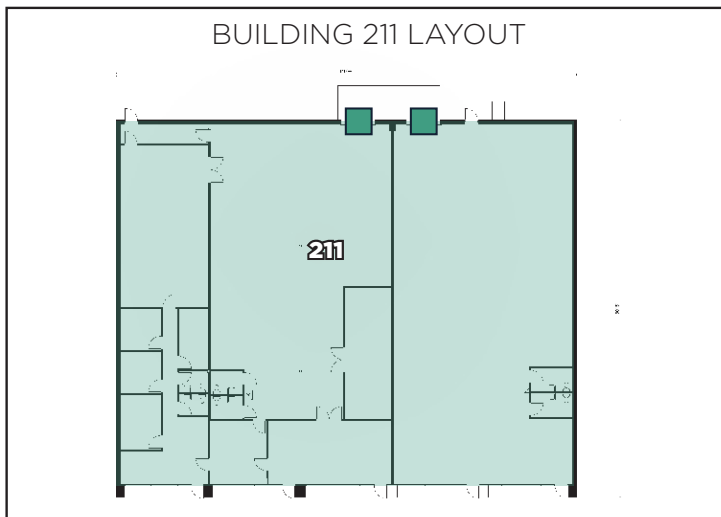
DRIVE-IN DOORS OPTION AVAILABLE

FRONT PARK, REAR LOAD

POTENTIAL FOR OUTSIDE STORAGE YARD



■ = dock high doors



CORPORATE NEIGHBORS



O'NEAL MANUFACTURING SERVICES
AN OMI COMPANY
Let's Build Things®

PFG
PRECISION
FABRIC GROUP INC

EVONIK
Leading Beyond Chemistry

Parker

PFG
PRECISION
FABRIC GROUP INC

SNIDER FLEET SOLUTIONS
Going The Distance

Mother Murphy's
EXPERIENCE THE FLAVORS



THE VITAMIN SHOPPE

RANDLEMAN ROAD



Slifco electric
Powering the Future

ABC Supply Co. inc.

AC CORPORATION
INNOVATION. EXPERIENCE. RESULTS.
A CREEE UNITED COMPANY

Ryder
Ever better.

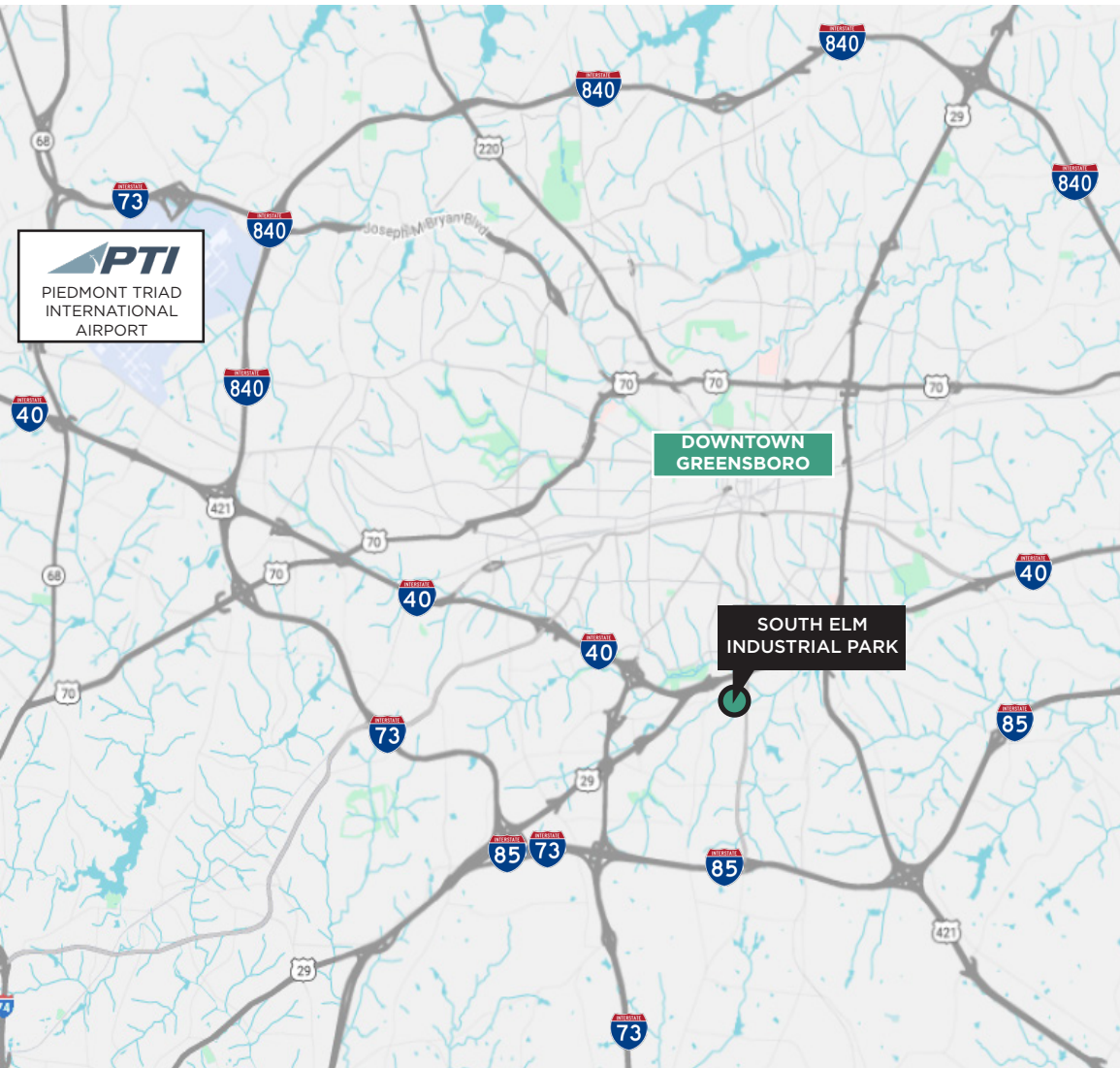
Alro Steel
Metals & Plastics



BRADY

UPS
UPS Freight

DRIVE TIMES



I-40
2 min / 0.6 miles

I-73
8 min / 4.2 miles

I-85
8 min / 4.0 miles

I-840
9 min / 7.0 miles

PIEDMONT TRIAD INT'L AIRPORT
17 min / 14.9 miles

DOWNTOWN GREENSBORO
10 min / 3.6 miles

SOUTH ELM INDUSTRIAL CENTER



For More Information, Please Contact:

Jason Ofsanko

Executive Director

+1 336 812 3300

Jason.Ofsanko@cushwake.com

Jordan Mitchell

Managing Director

+1 336 201 0495

Jordan.Mitchell@cushwake.com



©2026 Cushman & Wakefield. All rights reserved. The information contained in this communication is strictly confidential. This information has been obtained from sources believed to be reliable but has not been verified. NO WARRANTY OR REPRESENTATION, EXPRESS OR IMPLIED, IS MADE AS TO THE CONDITION OF THE PROPERTY (OR PROPERTIES) REFERENCED HEREIN OR AS TO THE ACCURACY OR COMPLETENESS OF THE INFORMATION CONTAINED HEREIN, AND SAME IS SUBMITTED SUBJECT TO ERRORS, OMISSIONS, CHANGE OF PRICE, RENTAL OR OTHER CONDITIONS, WITHDRAWAL WITHOUT NOTICE, AND TO ANY SPECIAL LISTING CONDITIONS IMPOSED BY THE PROPERTY OWNER(S). ANY PROJECTIONS, OPINIONS OR ESTIMATES ARE SUBJECT TO UNCERTAINTY AND DO NOT SIGNIFY CURRENT OR FUTURE PROPERTY PERFORMANCE.