




BRAND-NEW TROPHY ASSET

FOR LEASE

7421 E SLAUSON AVE
COMMERCE | CA 90040



±57,411 SF
AVAILABLE



±10,296 SF
EXECUTIVE OFFICE



36 FT
CLEAR HEIGHT



8
DOCK HIGH DOORS

FOR MORE INFORMATION PLEASE CONTACT:

MOON LIM

EXECUTIVE VICE PRESIDENT

P: 213.270.2256 | M: 213.308.2056

mlim@daumcommercial.com

CADRE #01903050

Although all information is furnished regarding for sale, rental or financing is from sources deemed reliable, such information has not been verified and no express representation is made nor is any to be implied as to the accuracy thereof, and it is submitted subject to errors, omissions, changes of price, rental or other conditions, prior sale, lease or financing, or withdrawal without notice.

 **DAUM**
COMMERCIAL REAL ESTATE SERVICES

±57,411 SF INDUSTRIAL

±57,411 SF

INDUSTRIAL

FOR LEASE
7421 E SLAUSON AVE
COMMERCE | CA 90040



PROPERTY FEATURES

- Brand-New Trophy Asset & Class A Construction
- Direct Access and Frontage to I-5 Freeway
- Two Points of Ingress and Egress on Slauson Ave and Greenwood Ave
- Contemporary Architectural Features
- Clerestory Glass
- Premium Interior & Exterior Finishes
- Extensive Landscaping
- Eight (8) Dock High Doors
- 100% Concrete Truck Court
- Minimum 135' Truck Court
- Fully Secure Truck Court
- 3000a, 277/480v, 3p, 4w

FOR MORE INFORMATION PLEASE CONTACT:

MOON LIM
EXECUTIVE VICE PRESIDENT

P: 213.270.2256 | M: 213.308.2056
mlim@daumcommercial.com
CADRE #01903050

Although all information is furnished regarding for sale, rental or financing is from sources deemed reliable, such information has not been verified and no express representation is made nor is any to be implied as to the accuracy thereof, and it is submitted subject to errors, omissions, changes of price, rental or other conditions, prior sale, lease or financing, or withdrawal without notice.

DAUM
COMMERCIAL REAL ESTATE SERVICES

±57,411 SF

INDUSTRIAL

FOR LEASE
7421 E SLAUSON AVE
COMMERCE | CA 90040



FOR MORE INFORMATION PLEASE CONTACT:

MOON LIM
EXECUTIVE VICE PRESIDENT

P: 213.270.2256 | M: 213.308.2056
mlim@daumcommercial.com
CADRE #01903050

Although all information is furnished regarding for sale, rental or financing is from sources deemed reliable, such information has not been verified and no express representation is made nor is any to be implied as to the accuracy thereof, and it is submitted subject to errors, omissions, changes of price, rental or other conditions, prior sale, lease or financing, or withdrawal without notice.



±57,411 SF

INDUSTRIAL

FOR LEASE
7421 E SLAUSON AVE
COMMERCE | CA 90040



FOR MORE INFORMATION PLEASE CONTACT:

MOON LIM
EXECUTIVE VICE PRESIDENT

P: 213.270.2256 | M: 213.308.2056
mlim@daumcommercial.com
CADRE #01903050

Although all information is furnished regarding for sale, rental or financing is from sources deemed reliable, such information has not been verified and no express representation is made nor is any to be implied as to the accuracy thereof, and it is submitted subject to errors, omissions, changes of price, rental or other conditions, prior sale, lease or financing, or withdrawal without notice.

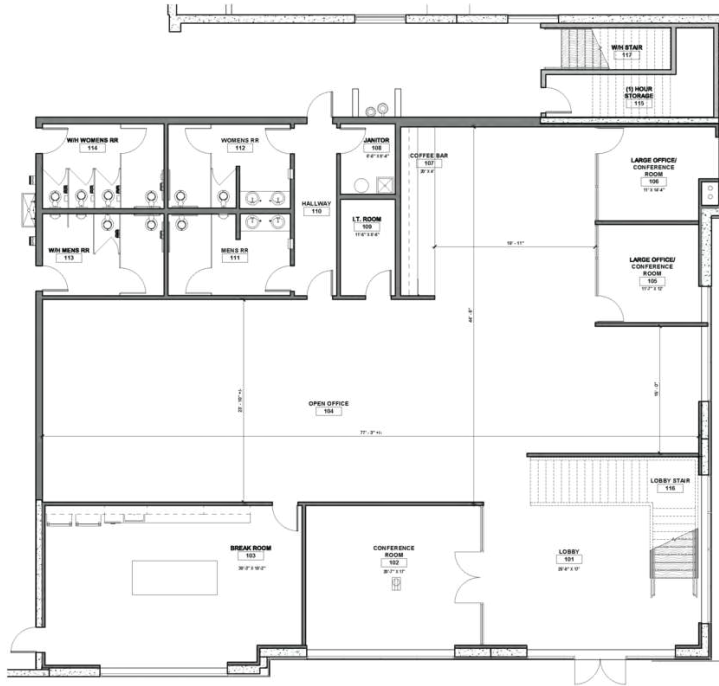
DAUM
COMMERCIAL REAL ESTATE SERVICES

±57,411 SF

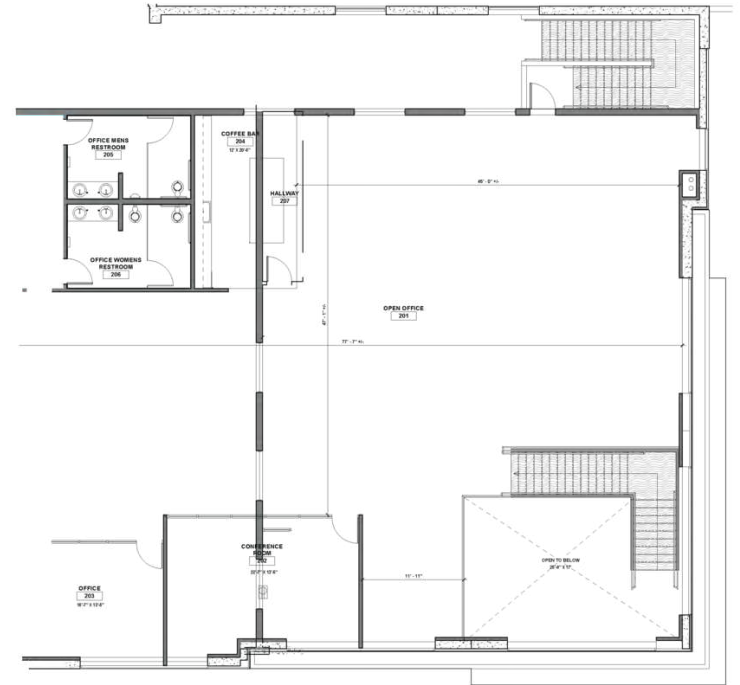
INDUSTRIAL

FOR LEASE
7421 E SLAUSON AVE
COMMERCE | CA 90040

FIRST FLOOR OFFICE SPACE PLAN



MEZZANINE OFFICE SPACE PLAN



*NOT TO SCALE

FOR MORE INFORMATION PLEASE CONTACT:

MOON LIM
EXECUTIVE VICE PRESIDENT

P: 213.270.2256 | M: 213.308.2056
mlim@daumcommercial.com
CADRE #01903050

Although all information is furnished regarding for sale, rental or financing is from sources deemed reliable, such information has not been verified and no express representation is made nor is any to be implied as to the accuracy thereof, and it is submitted subject to errors, omissions, changes of price, rental or other conditions, prior sale, lease or financing, or withdrawal without notice.

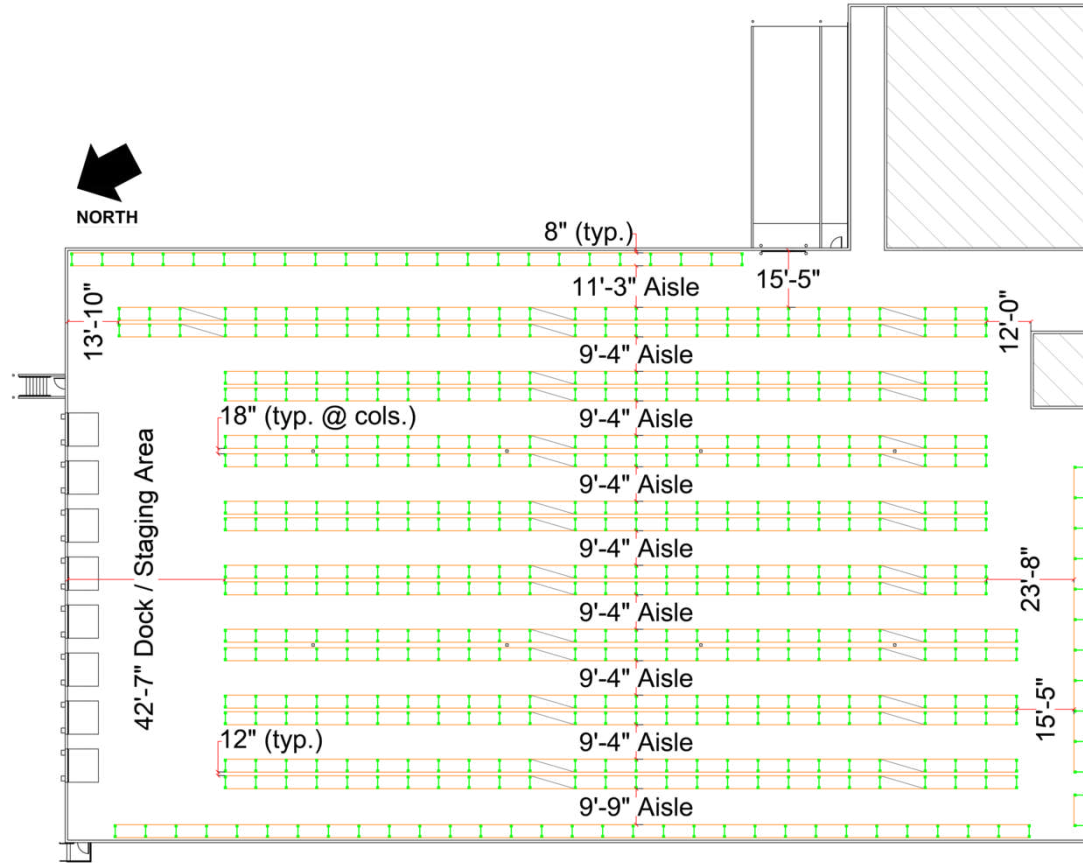


±57,411 SF

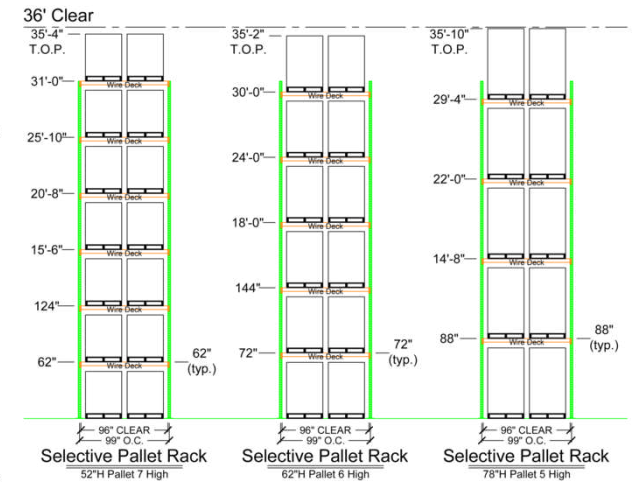
INDUSTRIAL

RACKING PLAN

FOR LEASE
7421 E SLAUSON AVE
COMMERCE | CA 90040



Number of Bays	Pallet Height	Pallet Positions
459	52"	6,426
	62"	5,508
	78"	4,590



***NOT TO SCALE**

FOR MORE INFORMATION PLEASE CONTACT:

MOON LIM
EXECUTIVE VICE PRESIDENT

P: 213.270.2256 | M: 213.308.2056
mlim@daumcommercial.com
CADRE #01903050

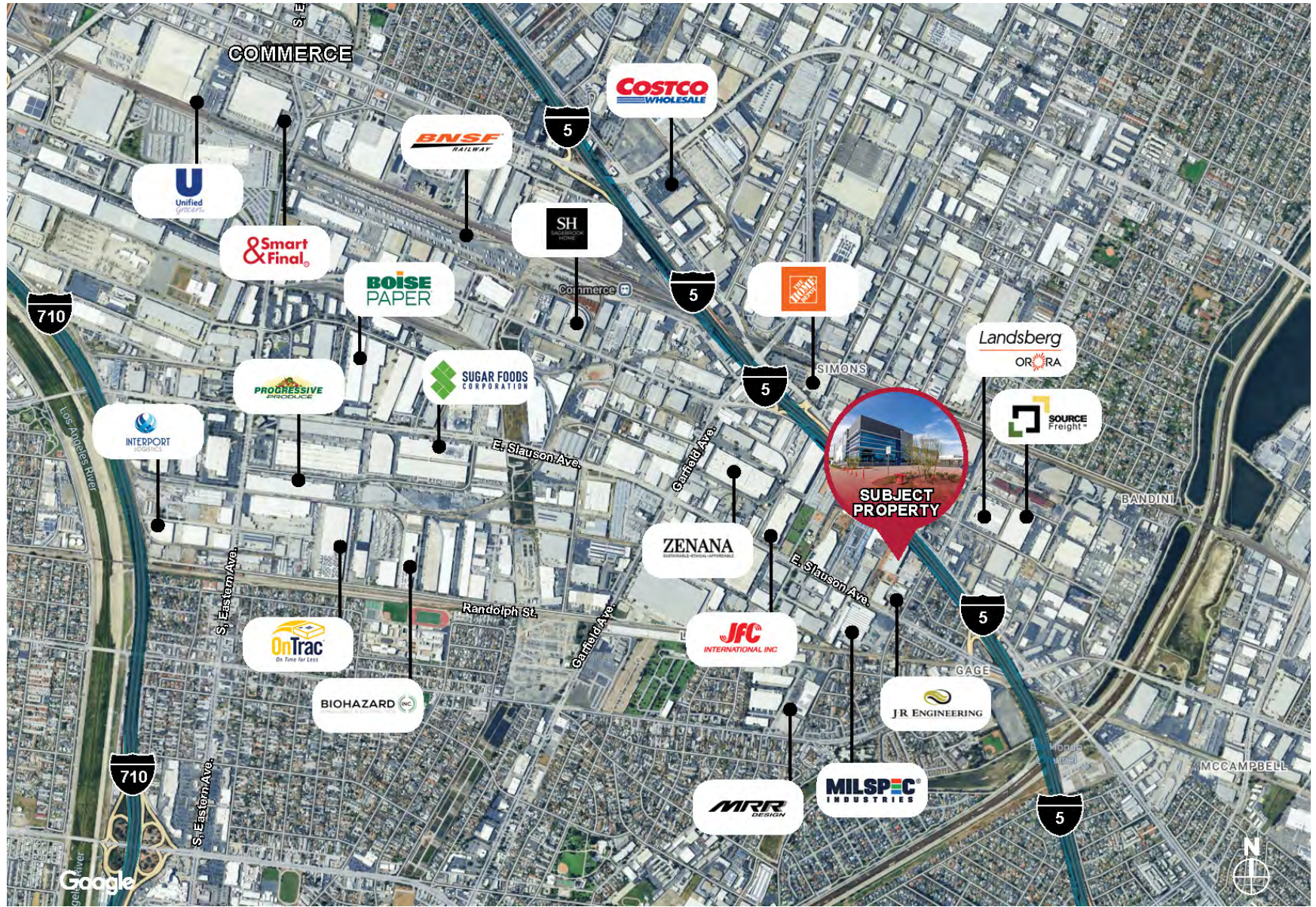
Although all information is furnished regarding for sale, rental or financing is from sources deemed reliable, such information has not been verified and no express representation is made nor is any to be implied as to the accuracy thereof, and it is submitted subject to errors, omissions, changes of price, rental or other conditions, prior sale, lease or financing, or withdrawal without notice.



±57,411 SF

INDUSTRIAL

FOR LEASE
7421 E SLAUSON AVE
COMMERCE | CA 90040



FOR MORE INFORMATION PLEASE CONTACT:

MOON LIM
EXECUTIVE VICE PRESIDENT

P: 213.270.2256 | M: 213.308.2056
mlim@daumcommercial.com
CADRE #01903050

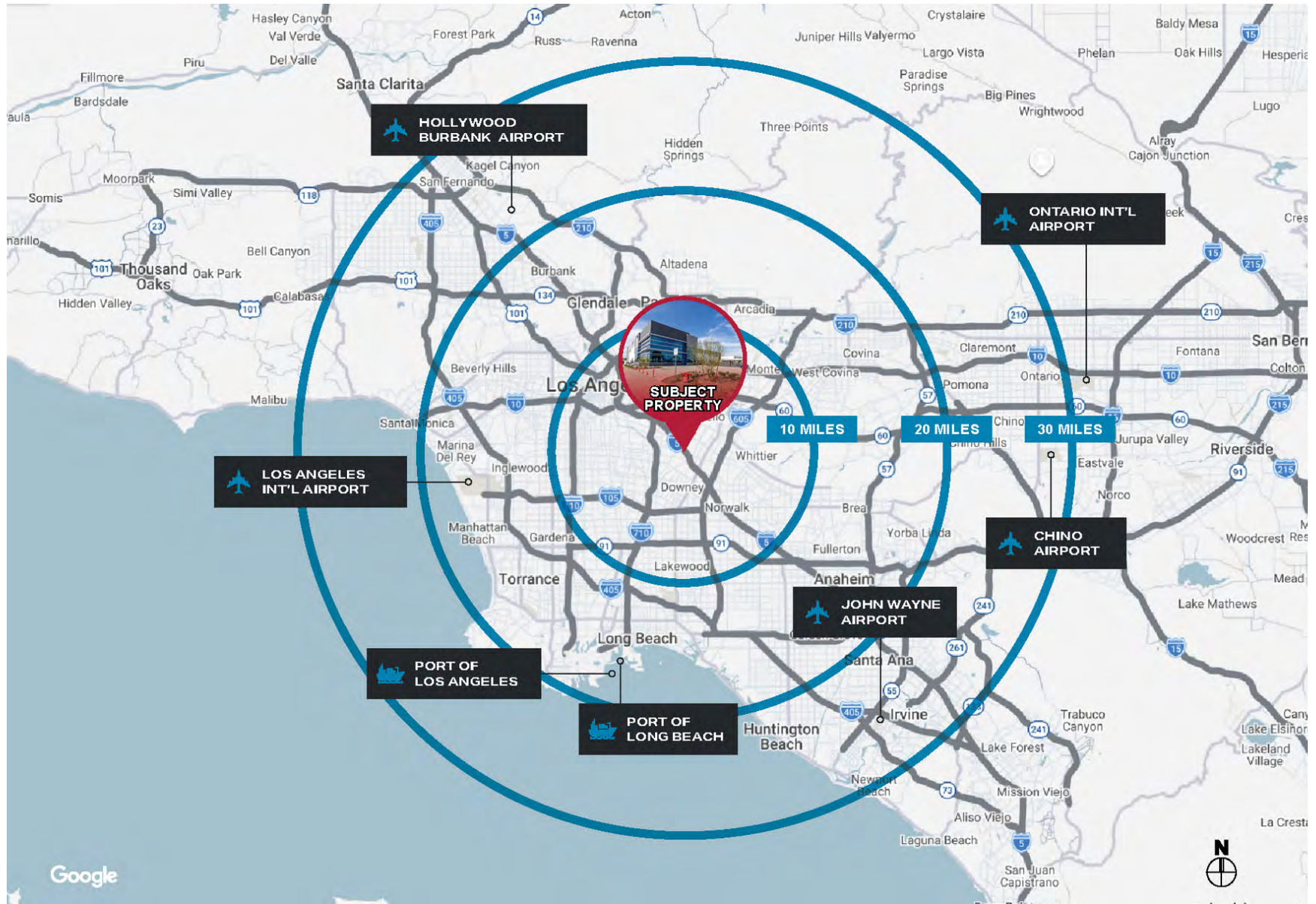
Although all information is furnished regarding for sale, rental or financing is from sources deemed reliable, such information has not been verified and no express representation is made nor is any to be implied as to the accuracy thereof, and it is submitted subject to errors, omissions, changes of price, rental or other conditions, prior sale, lease or financing, or withdrawal without notice.



±57,411 SF

INDUSTRIAL

7421 E SLAUSON AVE
COMMERCIAL | CA 90040
FOR LEASE



FOR MORE INFORMATION PLEASE CONTACT:

MOON LIM
EXECUTIVE VICE PRESIDENT

P: 213.270.2256 | M: 213.308.2056
mlim@daumcommercial.com
CADRE #01903050

Although all information is furnished regarding for sale, rental or financing is from sources deemed reliable, such information has not been verified and no express representation is made nor is any to be implied as to the accuracy thereof, and it is submitted subject to errors, omissions, changes of price, rental or other conditions, prior sale, lease or financing, or withdrawal without notice.

