



Sublease Opportunities

colliers.com/Reno



5470 Kietzke Lane Reno, Nevada

Sublease Opportunity

Suite 220: 2,098 SF

Lease Rate

Call For Pricing

Well Located Class A Office Building
in the Meadowood Submarket



Class A
Office Options



Good Access to
Amenities, Interstate,
and Housing



2,098 SF of
Office Space
Available

For Sublease

Property Overview

Address:	5470 Kietzke Lane
Location:	Reno, NV 89511
Available Space:	Suite 220: 2,098 SF
Parking:	Lot spaces
Asking Lease Rate:	Call for Pricing

Building Comments

Colliers is pleased to present a rare opportunity for a small office in the Meadowood Submarket in one of Reno's premier office buildings. It boasts remarkable signage, freeway exposure, and easy access to retail facilities and public transport. The structure features high-end embellishments throughout and is conveniently within walking distance of Anderson Park, complete with scenic walkways and designated picnic spots. Constructed in 2002, this three-story building also includes an outside patio furnished with tables. With its full frontage facing I-580, the building enjoys maximum visibility. Furthermore, ample parking is available on-site.

Property Details

- Built in 2002
- Three Stories
- Outside Patio with Tables
- Building has Full Exposure to I-580
- Ample Parking



Contact:

Melissa Molyneux, SIOR, CCIM

Executive Vice President

+1 775 823 4674

Melissa.Molyneux@colliers.com

NV Lic. BS.0144599.LLC

Jason Hallahan

Associate

+1 775 287 5610

Jason.Hallahan@colliers.com

NV Lic S.0200644



Colliers

5520 Kietzke Lane, Suite 300

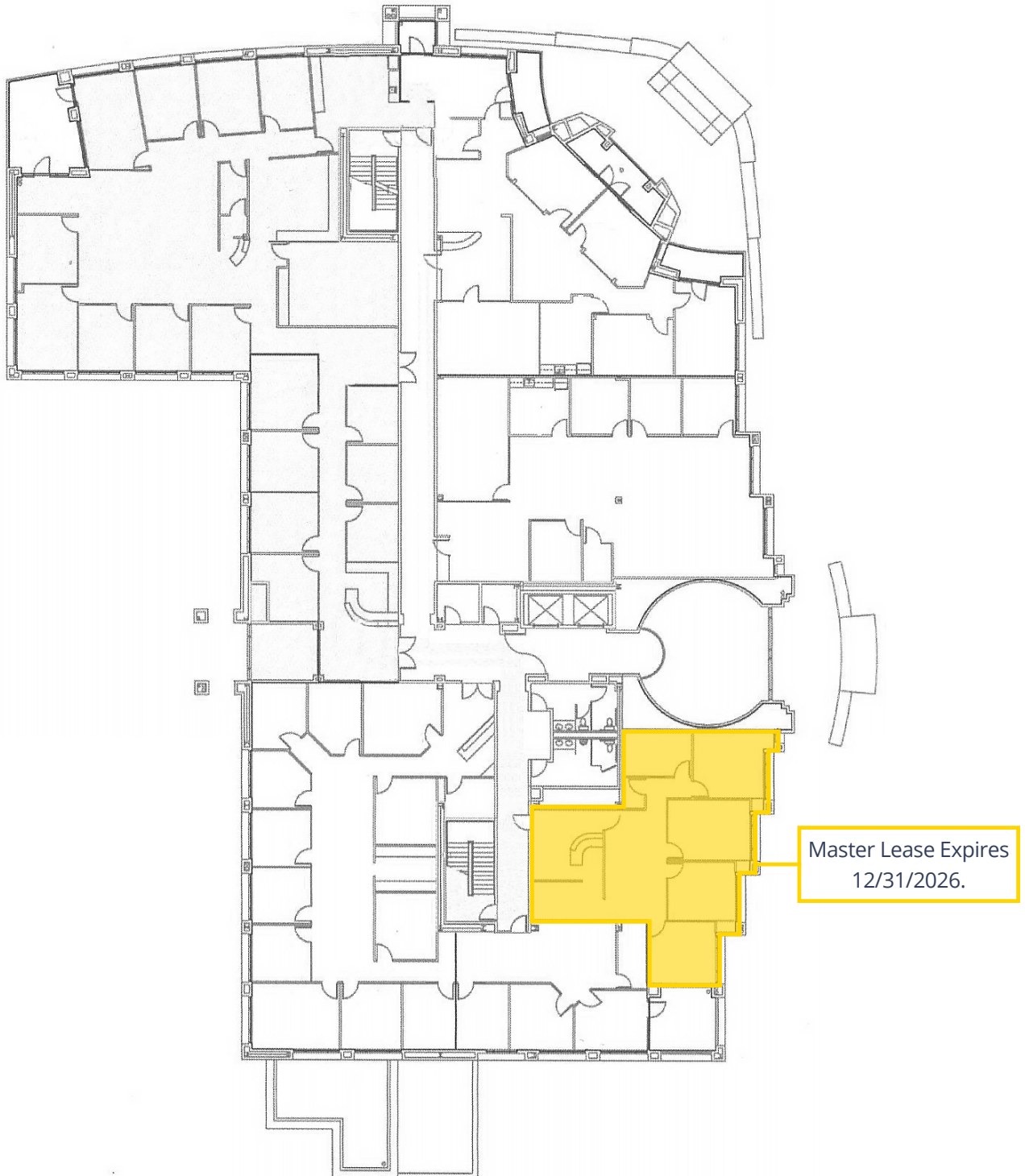
Reno, Nevada 89511

+1 775 823 9666

colliers.com/reno

Second Floor Availability

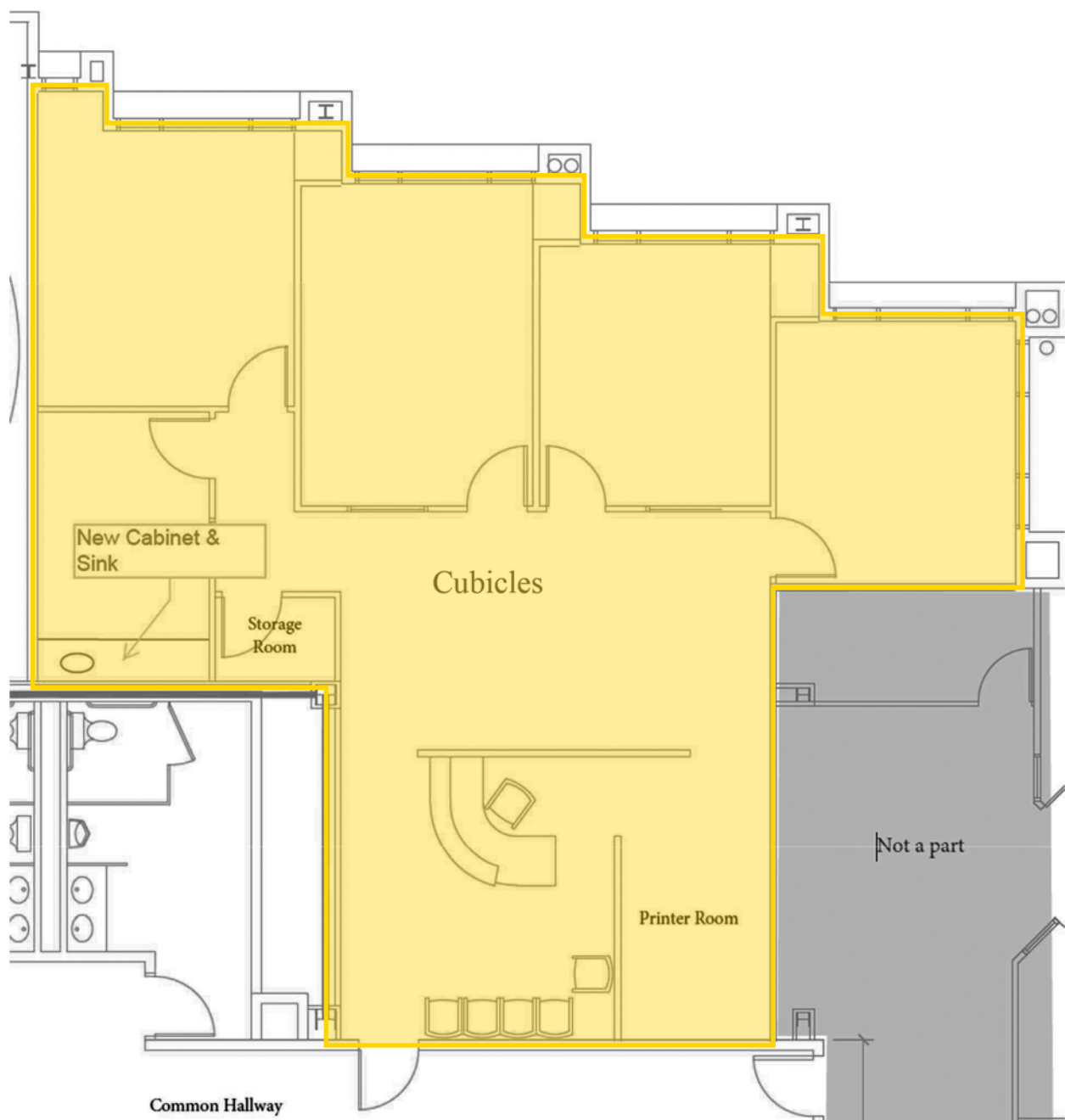
 Suite 220: 2,098 SF



Suite 220: 2,098 SF

Suite Details

The space layout includes a reception area, 4 large private rooms that can be used for offices or conference/meeting rooms, space for cubicles, IT room, copy and storage room and a breakroom with a sink. Furniture can be made available. **Master lease expires 12/31/2026.**



Suite 220 Photography



Amenities & Services



Rancharrah

PERENN BAKERY VILLAGE WELL TAPROOM & PIZZERIA ARMANDO & SONS

Hineki Rolled Mountain Creamery Most Coney's

SIERRA SLEEP AIRWAY AND WELLNESS CENTER Cic Comprehensive Integrated Care

Seeca Smiles Complete Health Dentistry GREAT BASIN DENTAL & FACIAL SURGERY

5470 Kietzke Lane
Reno, NV, 89511

Downtown Reno

Atlantis CASINO RESORT SPA • RENO

WHOLE FOODS MARKET

HOMewood SUITES Hilton

109,000 ADT

McCORMACK LEAVITT GROUP Colliers

MK McKENZIE PROPERTIES Regus urology nevada

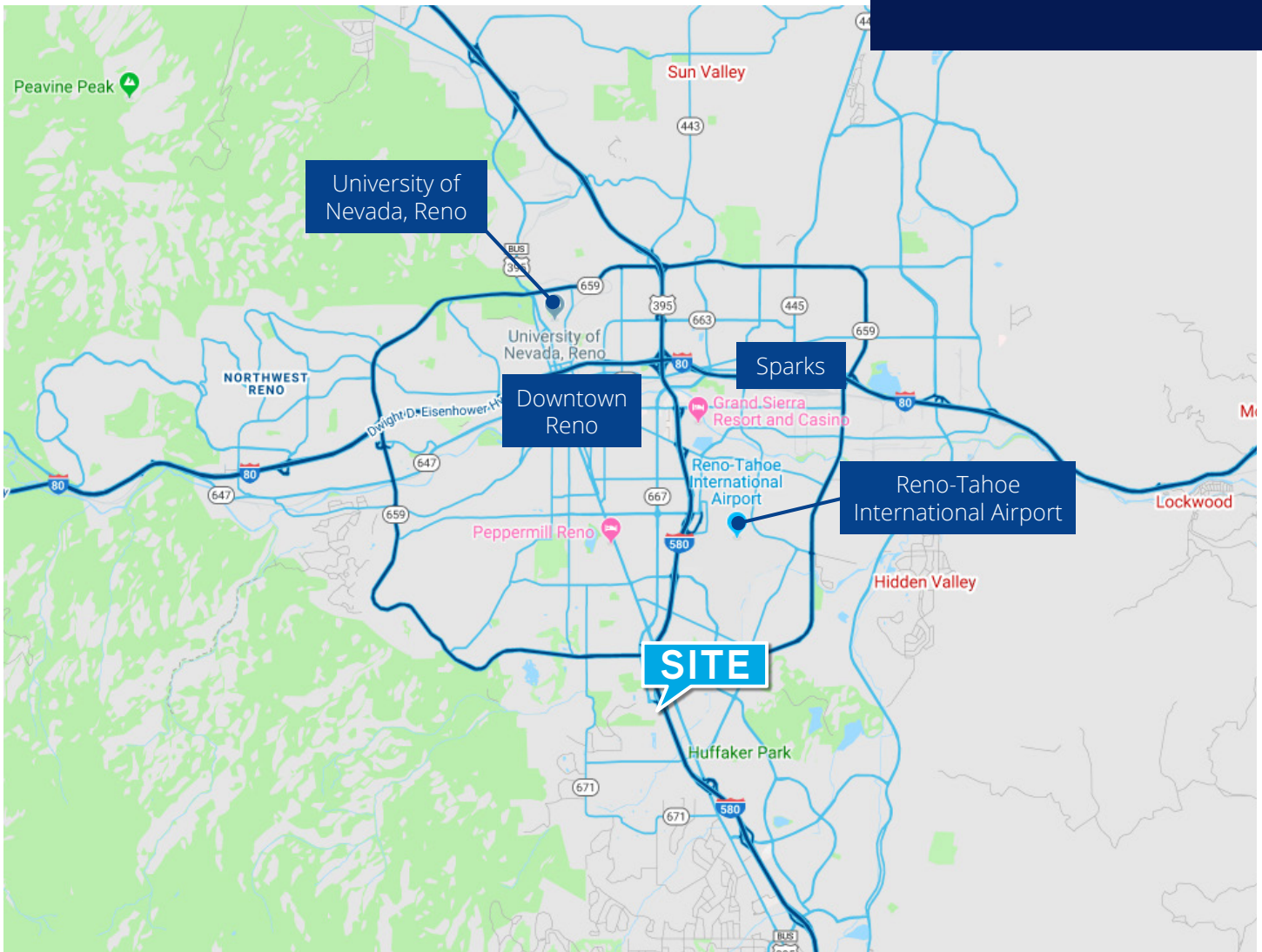
Anderson Park



BlueBird CPAs Experience Elevated. Northern Nevada MEDICAL CENTER CARRINGTON COLLEGE

WALTHER MANSFIELD BROCK MAYO ATTORNEYS AT LAW GV BOLIGHTLY VANNAH PLUMAS BANK

Location



This document/email has been prepared by Colliers for advertising and general information only. Colliers makes no guarantees, representations or warranties of any kind, expressed or implied, regarding the information including, but not limited to, warranties of content, accuracy and reliability. Any interested party should undertake their own inquiries as to the accuracy of the information. Colliers excludes unequivocally all inferred or implied terms, conditions and warranties arising out of this document and excludes all liability for loss and damages arising there from. This publication is the copyrighted property of Colliers and /or its licensor(s). © 2026. All rights reserved. This communication is not intended to cause or induce breach of an existing listing agreement.

Contact



Melissa Molyneux, SIOR, CCIM
Executive Vice President
+1 775 823 4674
Melissa.Molyneux@colliers.com
NV Lic. BS.0144599.LLC



Jason Hallahan
Associate
+1 775 333 6969
Jason.Hallahan@colliers.com
NV Lic S.0200644