

2454 OCCIDENTAL AVE S SUITE 3-C

SEATTLE, WA 98134



FLEX SUBLEASE | AVAILABLE WITHIN 30-60 DAYS

4,100 RSF

HUGHES MARINO

BUILDING INFORMATION



BUILDING

South Lander Business Park

ADDRESS

2454 Occidental Avenue S
Seattle, WA 98134

AVAILABLE

Within 30-60 Days

ASKING RATE

\$1.35/NNN

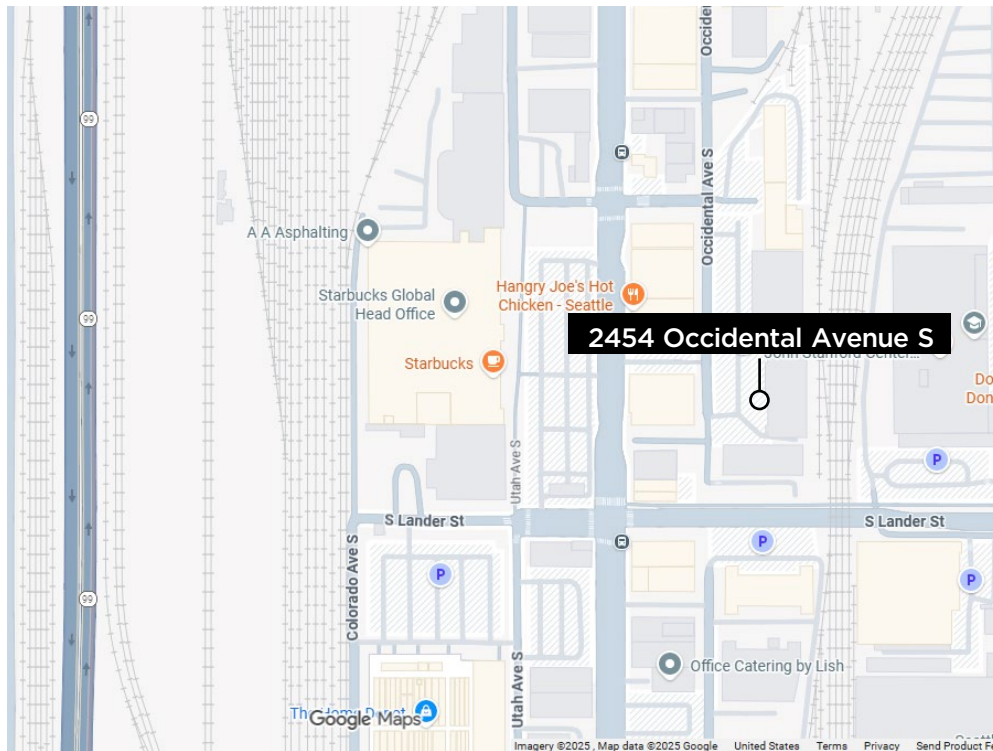
AVAILABLE THROUGH

April 1, 2028

ADDITIONAL FEATURES

- Refreshed and modern interior finishes
- Natural light
- Clean warehouse / storage area with 2 sets of double door loading access
- Furniture available
- Open to full space sublease or flexible shared use
- Mix of private offices and open work area
- Gated parking area

LOCATION HIGHLIGHTS



**TRANSIT
SCORE**

70

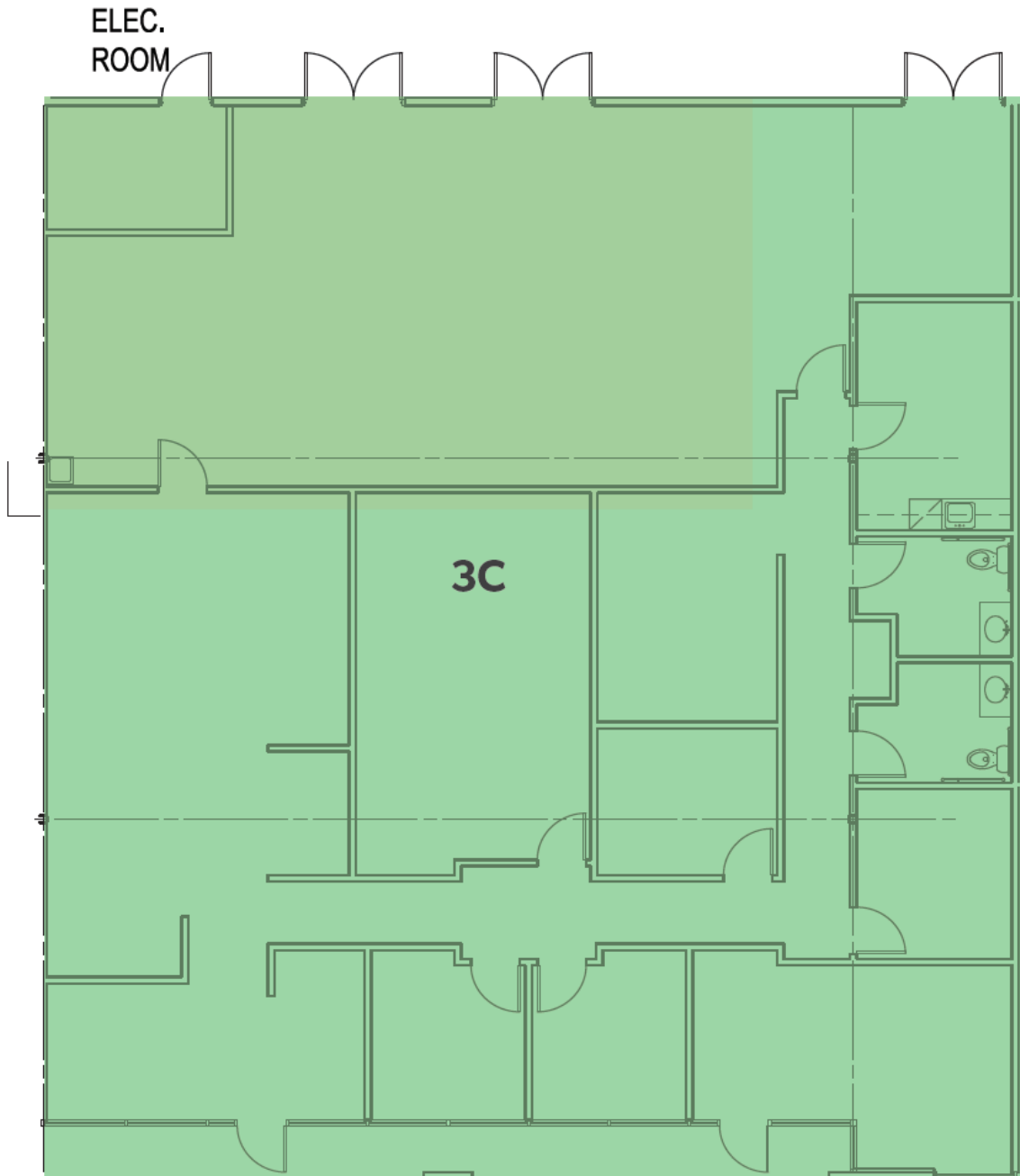
**WALK
SCORE**

60

KEY HIGHLIGHTS

- Excellent access to I-5 and SR 99
- Minutes away from Light Rail Station
- Close proximity to stadiums

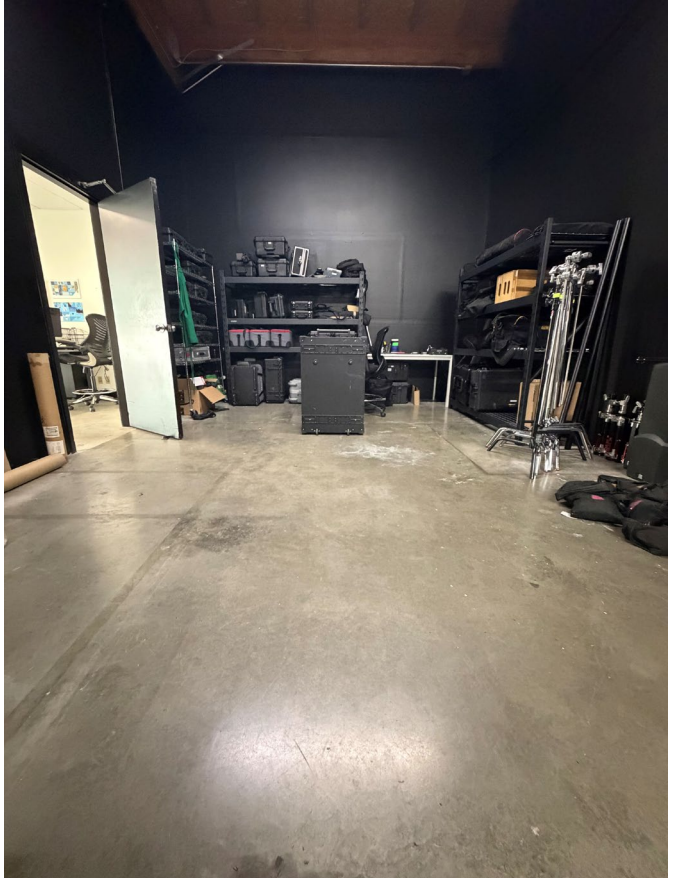
FLOOR PLAN



2454 OCCIDENTAL AVENUE S, SUITE 3-C



2454 OCCIDENTAL AVENUE S, SUITE 3-C



CONTACT INFORMATION



AUSTIN LASHLEY

austin@hughesmarino.com

206.624.3111

Broker Lic. #132863

1301 2nd AVENUE SEATTLE, WA
206.624.3111 | hughesmarino.com

HUGHESMARINO