

Available For Sublease

14301 N 87th Street, Suite 317 | Scottsdale, AZ 85260



For leasing information, please contact:

Will Jacoby

will.jacoby@streamrealty.com

M 314.795.9455





Sublease Overview

Highlights

- Available Immediately
- Term Thru: 08/31/2027
- Lush Courtyard
- Immediate Freeway Access
- Tenant Amenity Lounge & Conferencing Center Under Construction

Location Overview

This property is situated in the heart of Scottsdale Airpark with direct access to Raintree and Loop 101, this property offers excellent valley connectivity and close proximity to premier retail, dining, and entertainment. Property features include a lush courtyard atrium with seating along with upgraded common areas including a renovated conference room.

Demographics



38,732
Businesses
Within 10-Mile Radius



332,995
Employees
Within 10-Mile Radius



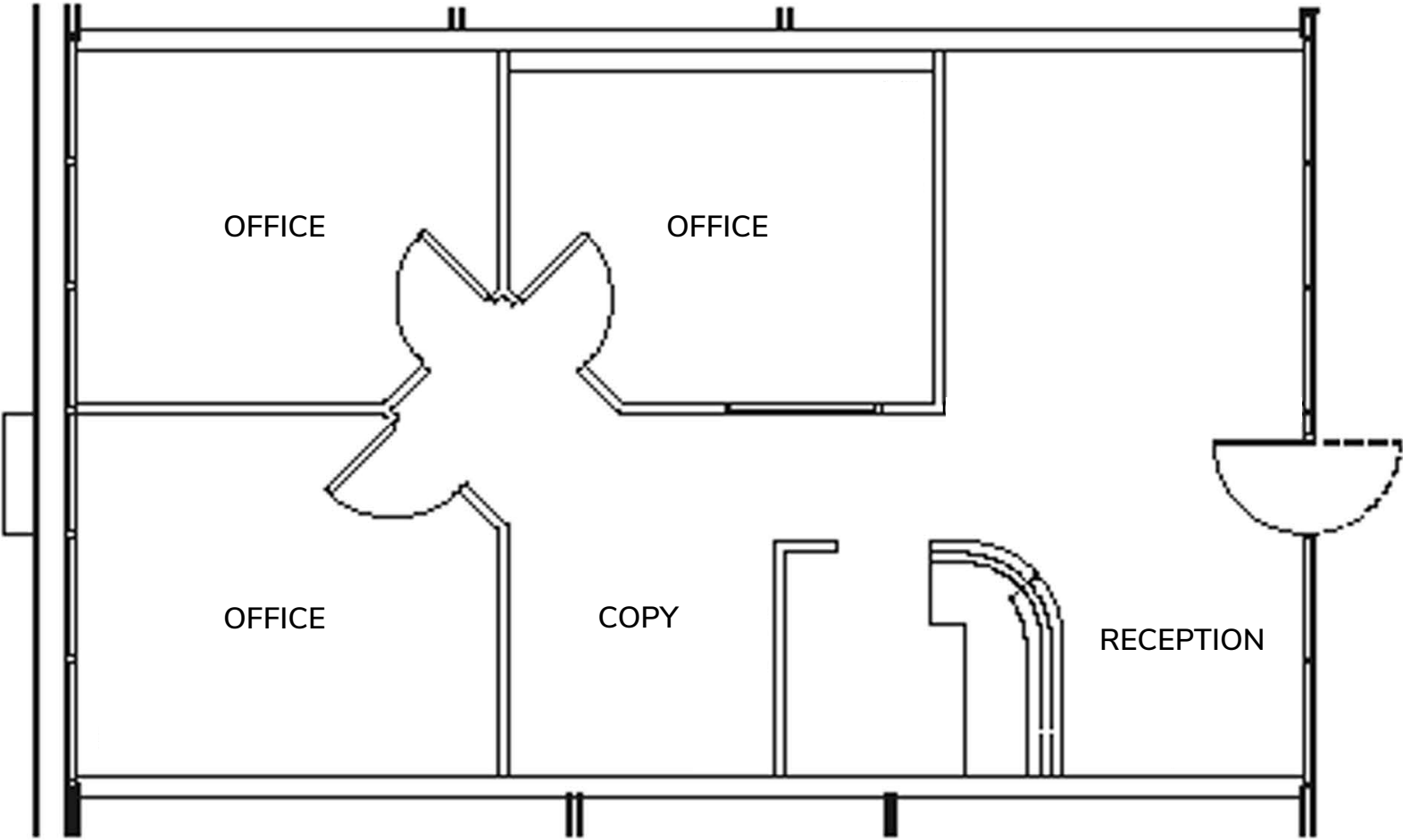
\$9,297,220,841
Consumer Spending
Within 10-Mile Radius



Floor Plan



[CLICK FOR VIRTUAL TOUR](#)



Reception Area



Furniture Available



3 Private Offices



Break Room



Space Photos



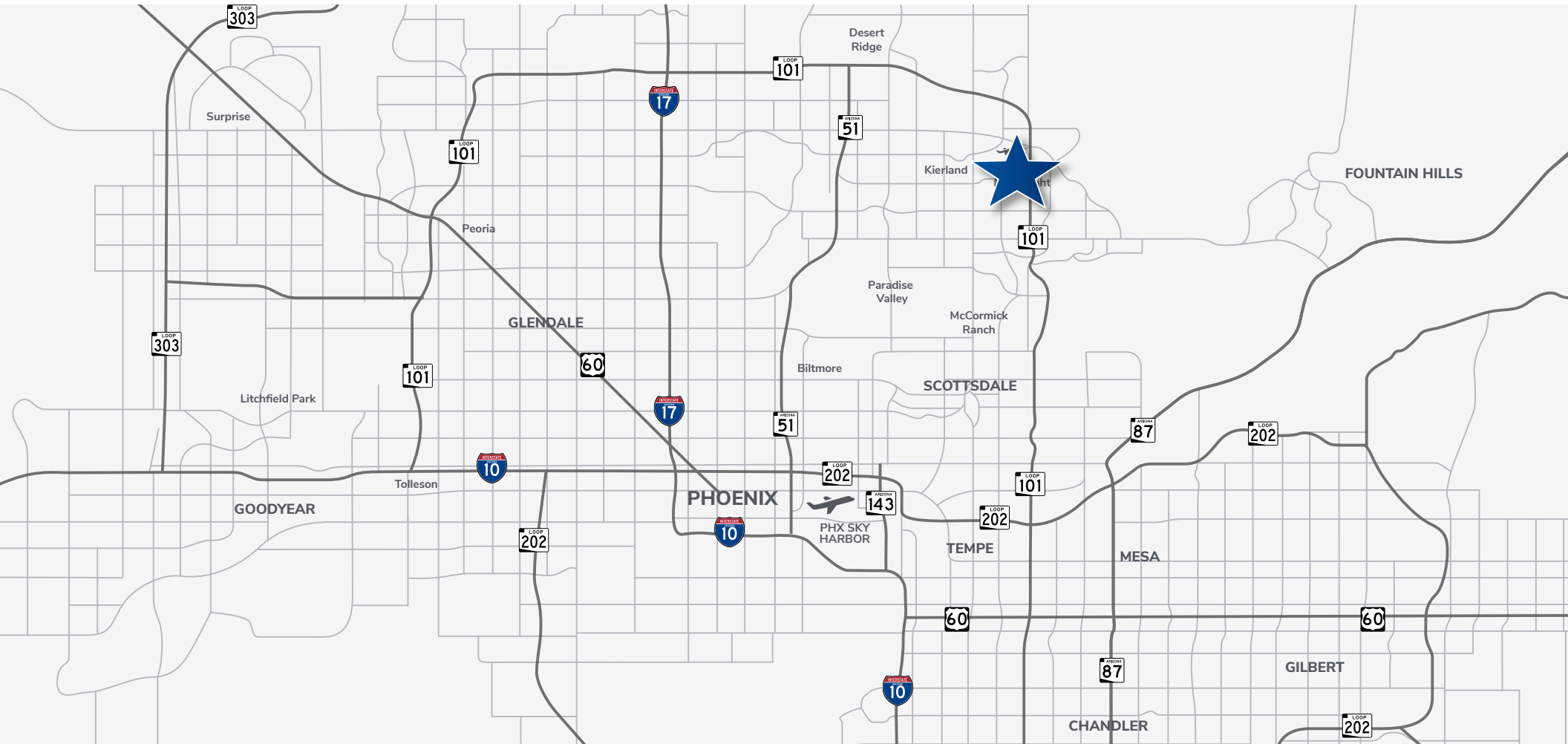
Building Photos



Available For Sublease



14301 N 87th Street, Suite 317 | Scottsdale, AZ 85260



For leasing information, please contact:

Will Jacoby
will.jacoby@streamrealty.com
M 314.795.9455

