

19440 FITZPATRICK STREET  
DETROIT, MICHIGAN

INDUSTRIAL FOR LEASE  
15,000 Square Feet Available



**SIGNATURE  
ASSOCIATES**  
KNOW SIGNATURE | KNOW RESULTS



## PROPERTY FEATURES

- 15,000 square feet available
- 3,000 square feet office
- 14' clear height
- (2) 10'x12', 8'x10' grade level doors
- (1) truckwell
- Large fence and paved yard
- Suits many potential uses
- Lease Rate: \$3,000/month NNN



For more information, please contact:

**JOE STACK**  
(248) 359 0615  
jstack@signatureassociates.com

**CHRIS MONSOUR**  
(248) 948 0107  
cmonsour@signatureassociates.com

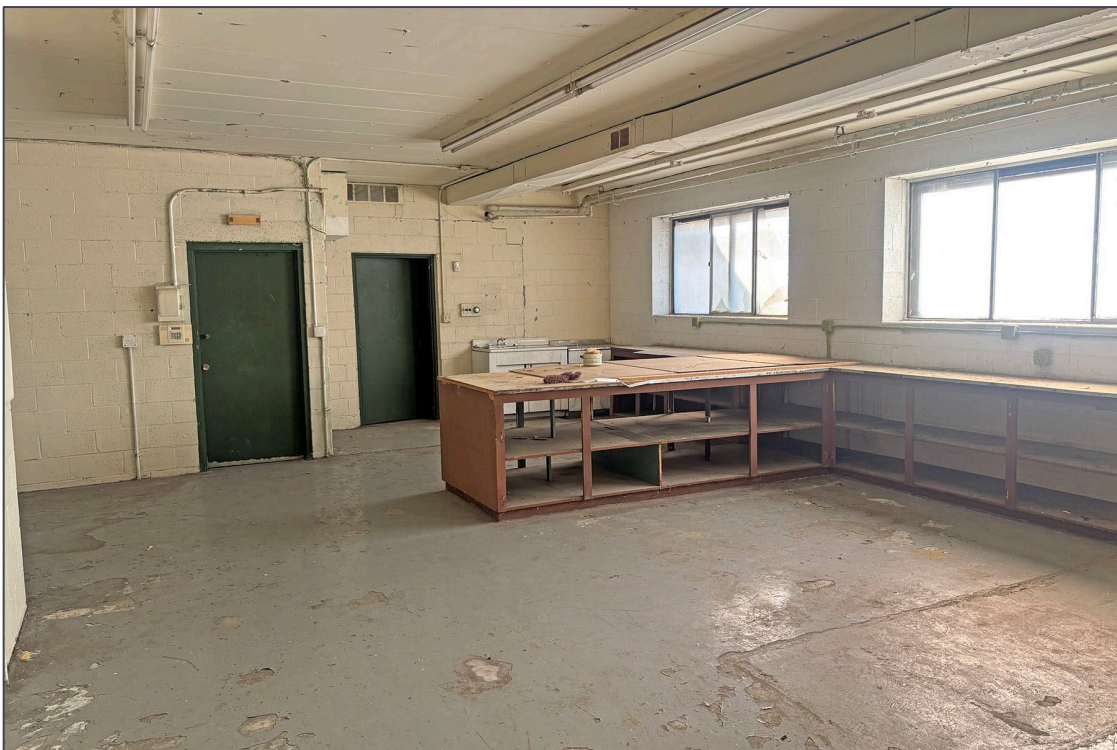
**SIGNATURE ASSOCIATES**  
One Towne Square, Suite 1200  
Southfield, MI 48076  
www.signatureassociates.com

# 19440 Fitzpatrick Street – Detroit, Michigan

## Industrial For Lease

15,000  
Square Feet  
AVAILABLE

### Interior Photos



For more information, please contact:

**JOE STACK**  
(248) 359 0615  
jstack@signatureassociates.com

**CHRIS MONSOUR**  
(248) 948 0107  
cmonsour@signatureassociates.com

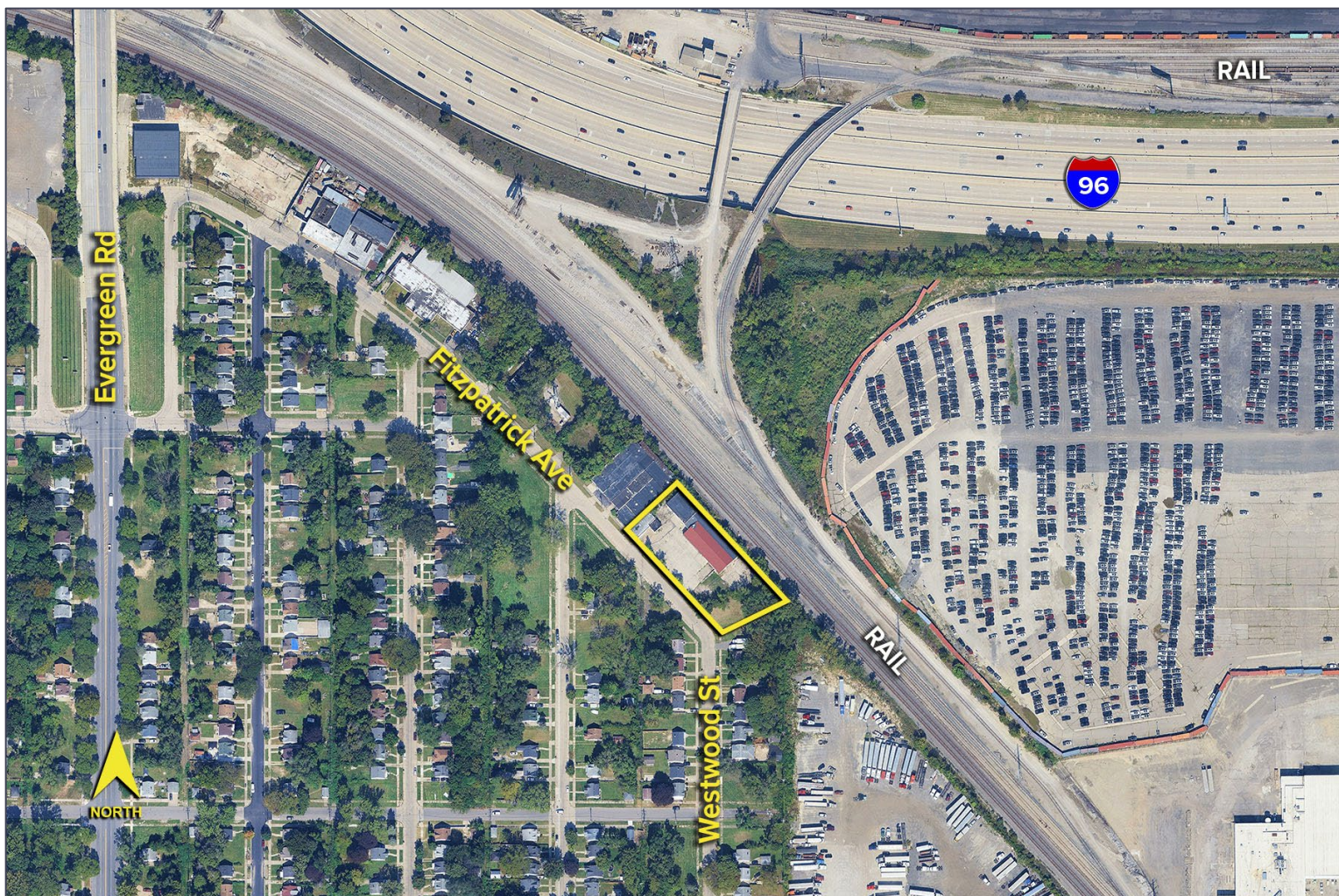
**SIGNATURE ASSOCIATES**  
One Towne Square, Suite 1200  
Southfield, MI 48076  
www.signatureassociates.com

# 19440 Fitzpatrick Street – Detroit, Michigan

## Industrial For Lease

15,000  
Square Feet  
AVAILABLE

Aerial



For more information, please contact:

**JOE STACK**  
(248) 359 0615  
jstack@signatureassociates.com

**CHRIS MONSOUR**  
(248) 948 0107  
cmonsour@signatureassociates.com

**SIGNATURE ASSOCIATES**  
One Towne Square, Suite 1200  
Southfield, MI 48076  
www.signatureassociates.com