

# FOUNTAINHEAD

CORPORATE CENTER



## PARK BRIDGE

1501 W FOUNTAINHEAD PARKWAY

168,632 RSF

AVAILABLE SPACE:

Suite 390	6,634 RSF	Available 12/1/26
Suite 401	21,477 RSF	Expandable to 27,533 RSF; Available 10/1/26

TOTAL PARK SIZE:  
**298,120 RSF**  
6 STORIES EACH  
LEASE RATE: \$33.<sup>00</sup> RSF

## AMENITIES

Luci's Café & Grab n Go Café

Tenant conference center  
and lounge

Outdoor seating areas

4 EV charging stations in  
Park Bridge garage

Lake and mountain views

In close proximity to I-10, I-143,  
US 60, Loop 101 and Loop 202

In close proximity to hundreds  
of restaurants, bars, and  
entertainment venues

10 minutes to Sky Harbor Airport



## PARK GARDEN

1620 W FOUNTAINHEAD PARKWAY

129,488 RSF

AVAILABLE SPACE:

Suite 205	9,180 RSF	
Suite 219	12,018 RSF	Divisible
2nd Floor	21,198 RSF	Divisible to 5,000 RSF
Suite 303	3,358 RSF	Spec Suite
Suite 308	3,528 RSF	



TIM WHITTEMORE  
Senior Director  
tim.whittemore@cushwake.com  
602 229 5931

PATRICK SCHRIMSHER  
Director  
patrick.schrimsher@cushwake.com  
602 468 8529

2555 E. CAMELBACK RD.  
SUITE 400 | PHOENIX, AZ 85016  
MAIN +1 602 954 9000  
FAX +1 602 253 0528  
CUSHMANWAKEFIELD.COM

# FOUNTAINHEAD

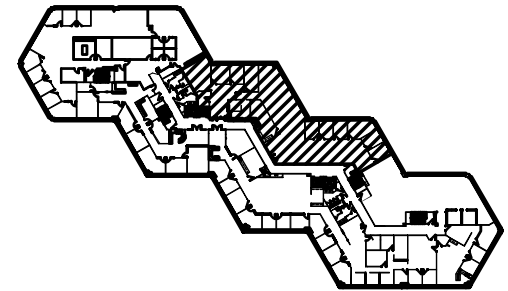
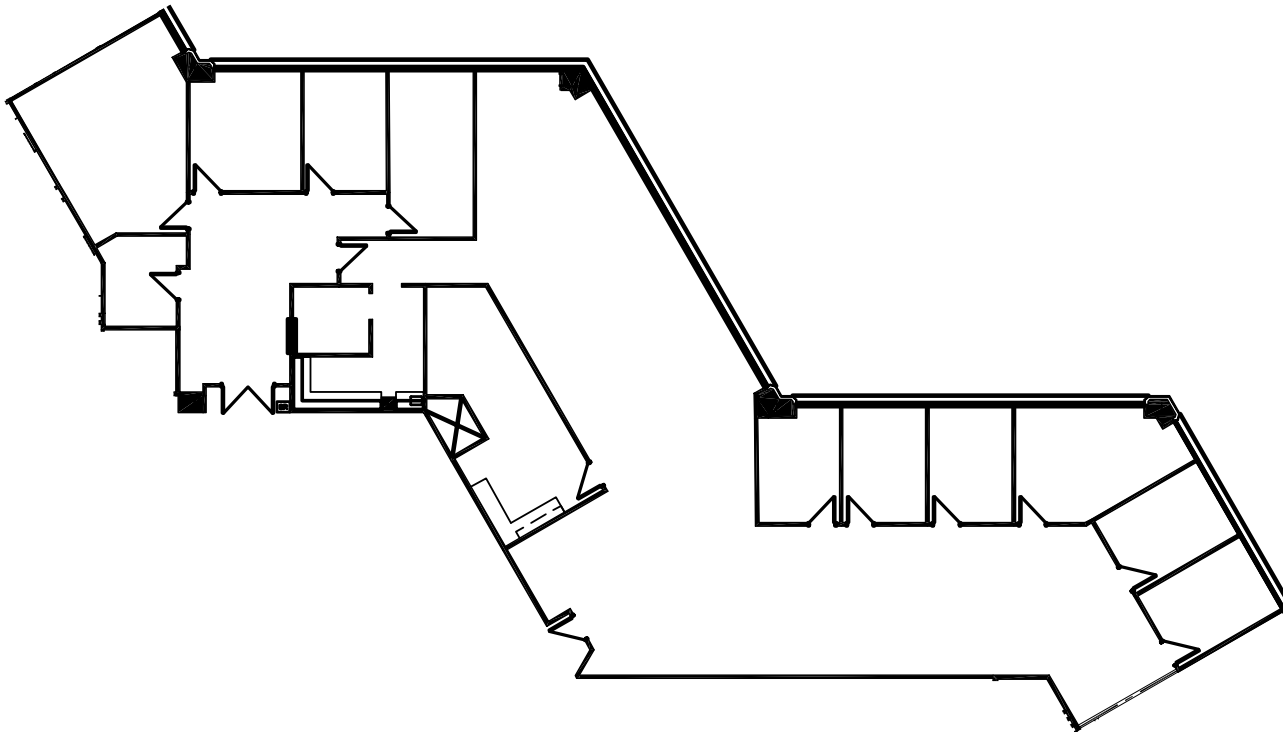
CORPORATE CENTER

# PARK BRIDGE

1501 W. FOUNTAINHEAD PARKWAY

## SUITE 390

6,634 RSF | AVAILABLE 12/1/26



TIM WHITTEMORE  
Senior Director  
tim.whittemore@cushwake.com  
602 229 5931

PATRICK SCHRIMSHER  
Director  
patrick.schrimsher@cushwake.com  
602 468 8529

2555 E. CAMELBACK RD.  
SUITE 400 | PHOENIX, AZ 85016  
MAIN +1 602 954 9000  
FAX +1 602 253 0528  
CUSHMANWAKEFIELD.COM

# FOUNTAINHEAD

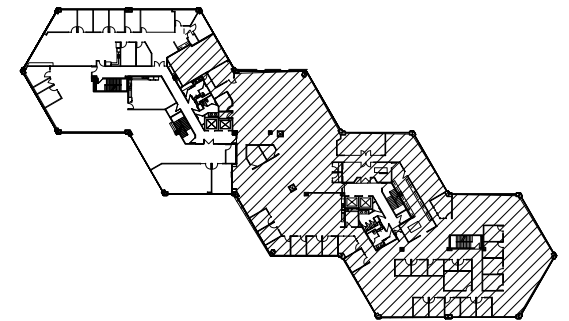
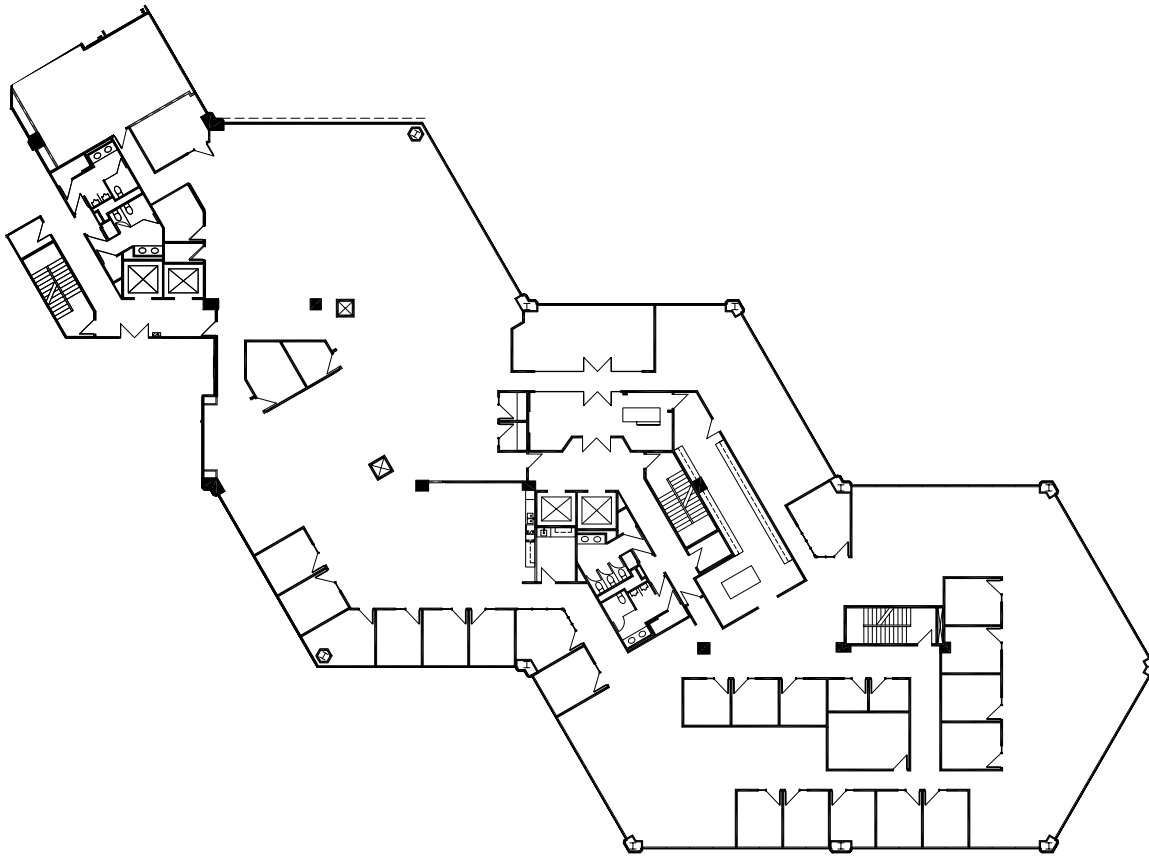
CORPORATE CENTER

# PARK BRIDGE

1501 W. FOUNTAINHEAD PARKWAY

## SUITE 401

21,477 RSF | AVAILABLE 10/1/26



TIM WHITTEMORE  
Senior Director  
tim.whittemore@cushwake.com  
602 229 5931

PATRICK SCHRIMSHER  
Director  
patrick.schrimsher@cushwake.com  
602 468 8529

2555 E. CAMELBACK RD.  
SUITE 400 | PHOENIX, AZ 85016  
MAIN +1 602 954 9000  
FAX +1 602 253 0528  
CUSHMANWAKEFIELD.COM

# FOUNTAINHEAD

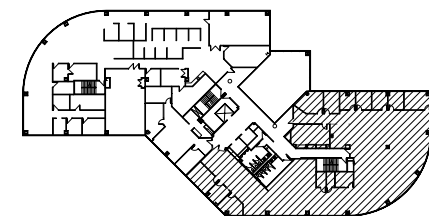
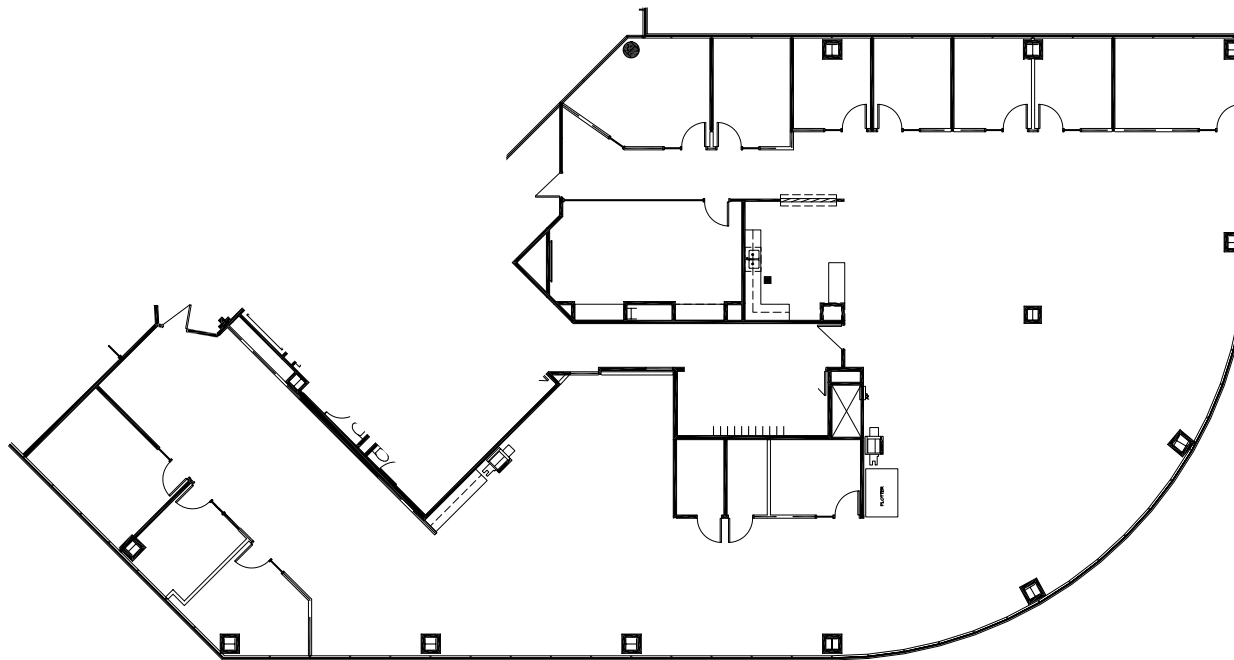
CORPORATE CENTER

# PARK GARDEN

1620 W. FOUNTAINHEAD PARKWAY

SUITE 205

9,180 RSF



TIM WHITTEMORE  
Senior Director  
tim.whittemore@cushwake.com  
602 229 5931

PATRICK SCHRIMSHER  
Director  
patrick.schrimsher@cushwake.com  
602 468 8529

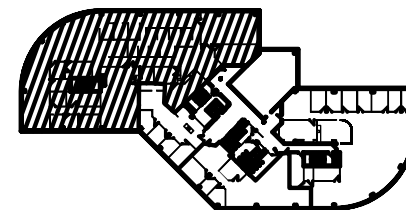
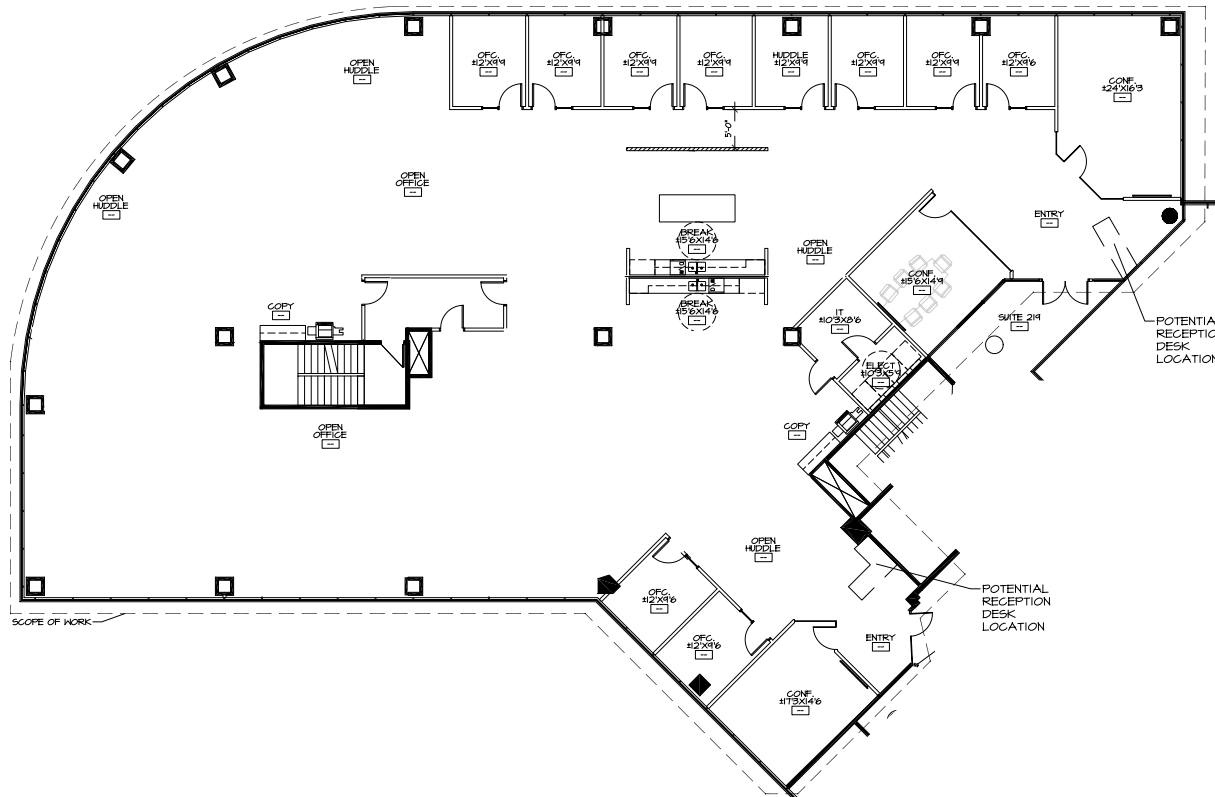
2555 E. CAMELBACK RD.  
SUITE 400 | PHOENIX, AZ 85016  
MAIN +1 602 954 9000  
FAX +1 602 253 0528  
CUSHMANWAKEFIELD.COM

# FOUNTAINHEAD

CORPORATE CENTER

PARK GARDEN  
1620 W. FOUNTAINHEAD PARKWAY

SUITE 219 & 210  
12,018 RSF  
(Divisible)  
(Hypothetical Plan)



TIM WHITTEMORE  
Senior Director  
tim.whittemore@cushwake.com  
602 229 5931

PATRICK SCHRIMSHER  
Director  
patrick.schrimsher@cushwake.com  
602 468 8529

2555 E. CAMELBACK RD.  
SUITE 400 | PHOENIX, AZ 85016  
MAIN +1 602 954 9000  
FAX +1 602 253 0528  
CUSHMANWAKEFIELD.COM

# FOUNTAINHEAD

CORPORATE CENTER

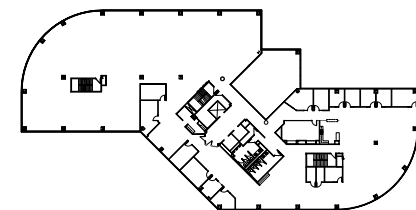
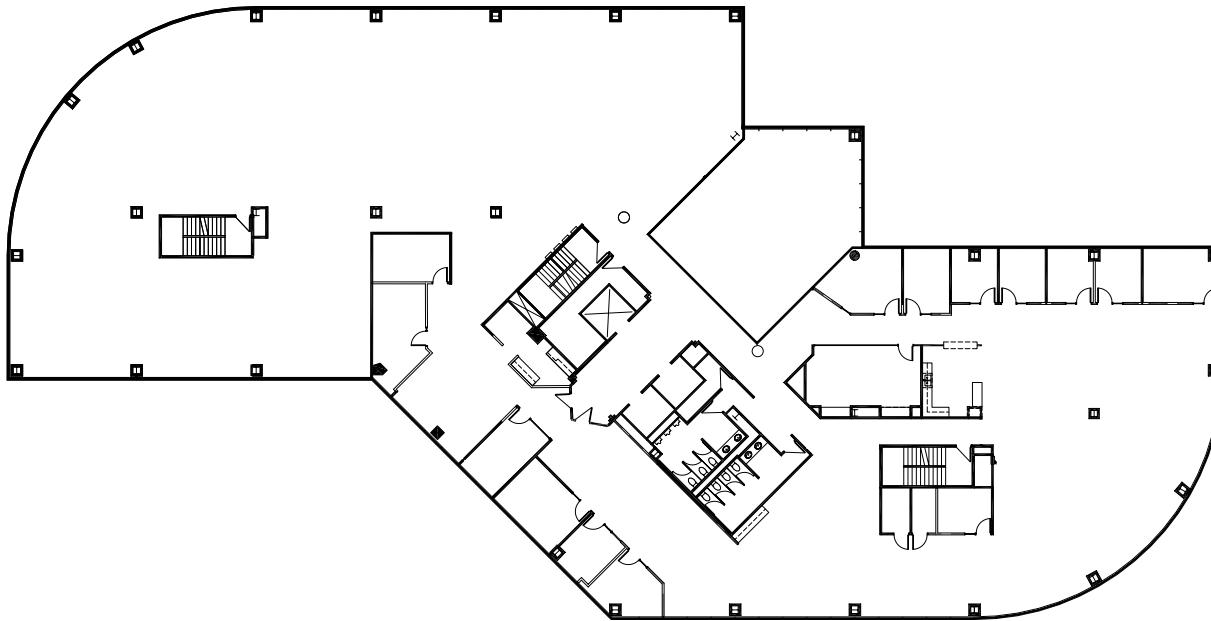
# PARK GARDEN

1620 W. FOUNTAINHEAD PARKWAY

## 2ND FLOOR

21,198 RSF

(Divisible to 5,000 RSF)



TIM WHITTEMORE  
Senior Director  
tim.whittemore@cushwake.com  
602 229 5931

PATRICK SCHRIMSHER  
Director  
patrick.schrimsher@cushwake.com  
602 468 8529

2555 E. CAMELBACK RD.  
SUITE 400 | PHOENIX, AZ 85016  
MAIN +1 602 954 9000  
FAX +1 602 253 0528  
CUSHMANWAKEFIELD.COM

# FOUNTAINHEAD

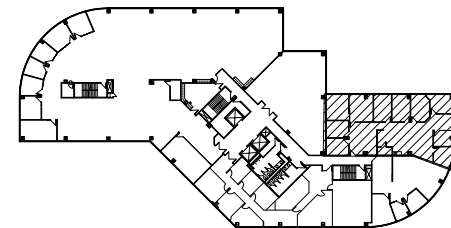
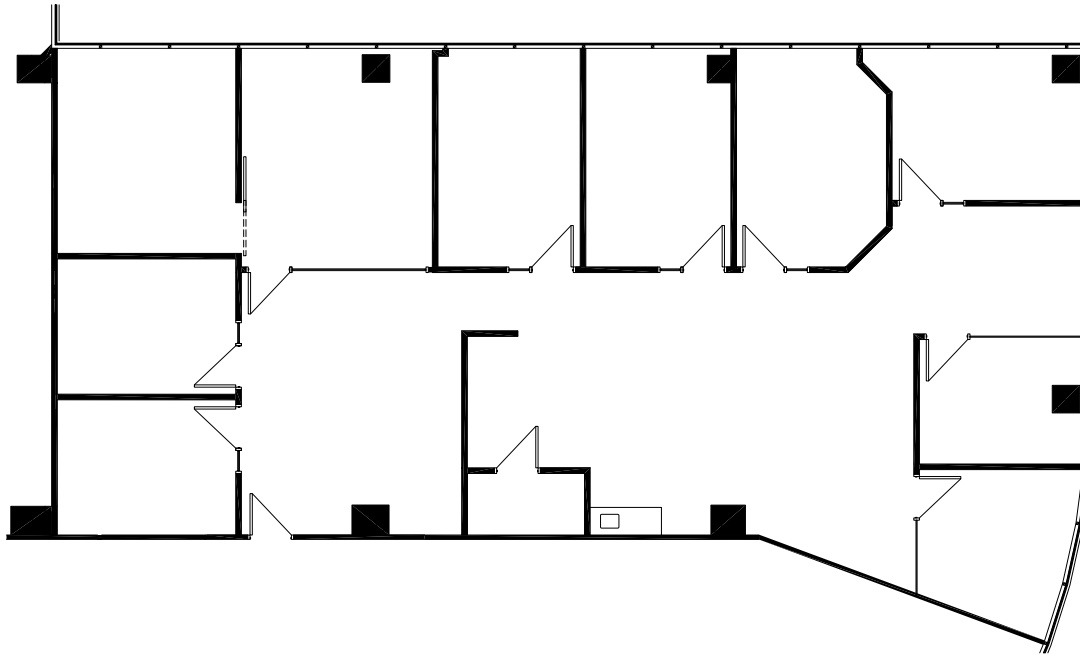
CORPORATE CENTER

# PARK GARDEN

1620 W. FOUNTAINHEAD PARKWAY

## SUITE 303

3,358 RSF



TIM WHITTEMORE  
Senior Director  
tim.whittemore@cushwake.com  
602 229 5931

PATRICK SCHRIMSHER  
Director  
patrick.schrimsher@cushwake.com  
602 468 8529

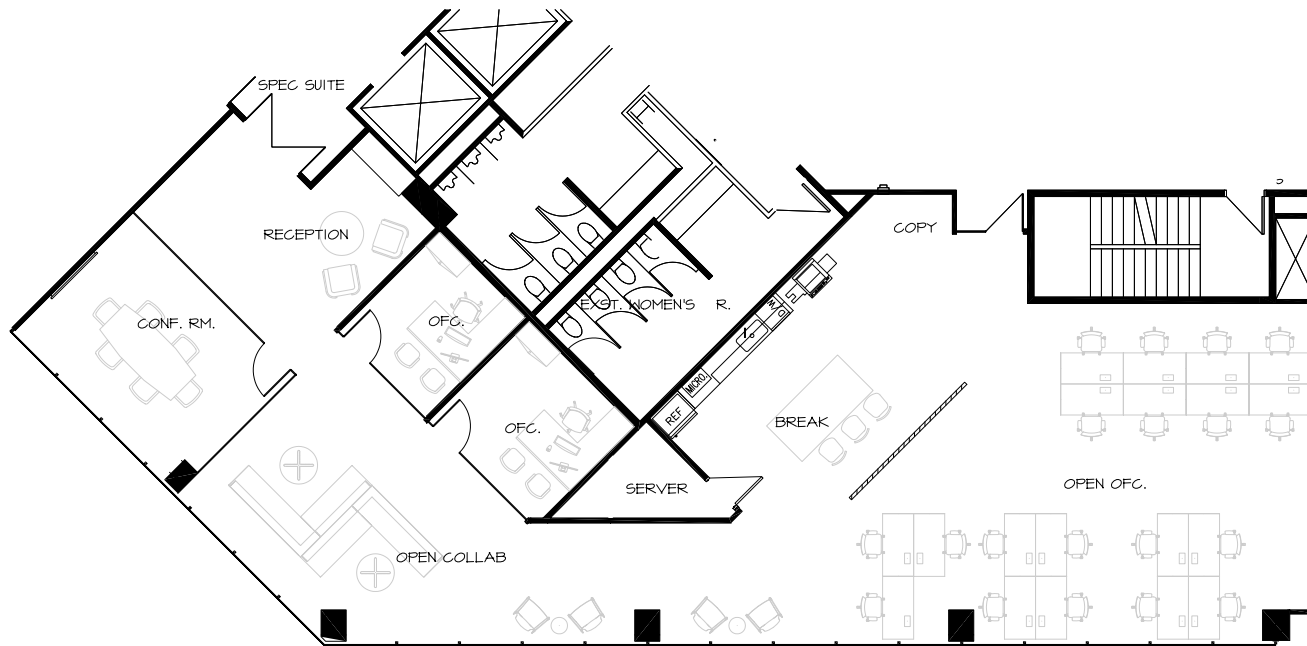
2555 E. CAMELBACK RD.  
SUITE 400 | PHOENIX, AZ 85016  
MAIN +1 602 954 9000  
FAX +1 602 253 0528  
CUSHMANWAKEFIELD.COM

# FOUNTAINHEAD

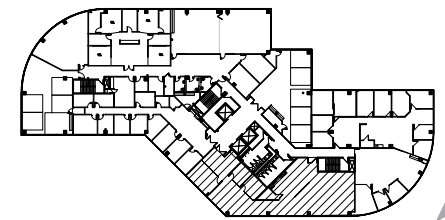
CORPORATE CENTER

PARK GARDEN  
1620 W. FOUNTAINHEAD PARKWAY

SUITE 308  
3,528 RSF  
Spec Suite



CLICK HERE FOR  
INTERACTIVE  
**360°**  
TOUR



TIM WHITTEMORE  
Senior Director  
tim.whittemore@cushwake.com  
602 229 5931

PATRICK SCHRIMSHER  
Director  
patrick.schrimsher@cushwake.com  
602 468 8529

2555 E. CAMELBACK RD.  
SUITE 400 | PHOENIX, AZ 85016  
MAIN +1 602 954 9000  
FAX +1 602 253 0528  
CUSHMANWAKEFIELD.COM