

19927 67th Avenue NE

Arlington, WA

Key Facts

Property type Industrial space

Building size 66,847 SF

Space available 31,621 SF



Contact Us

Learn more about this property or schedule a tour by reaching out to our local investment and leasing officer.

Chad Rawlings

+1 (206) 310-4229

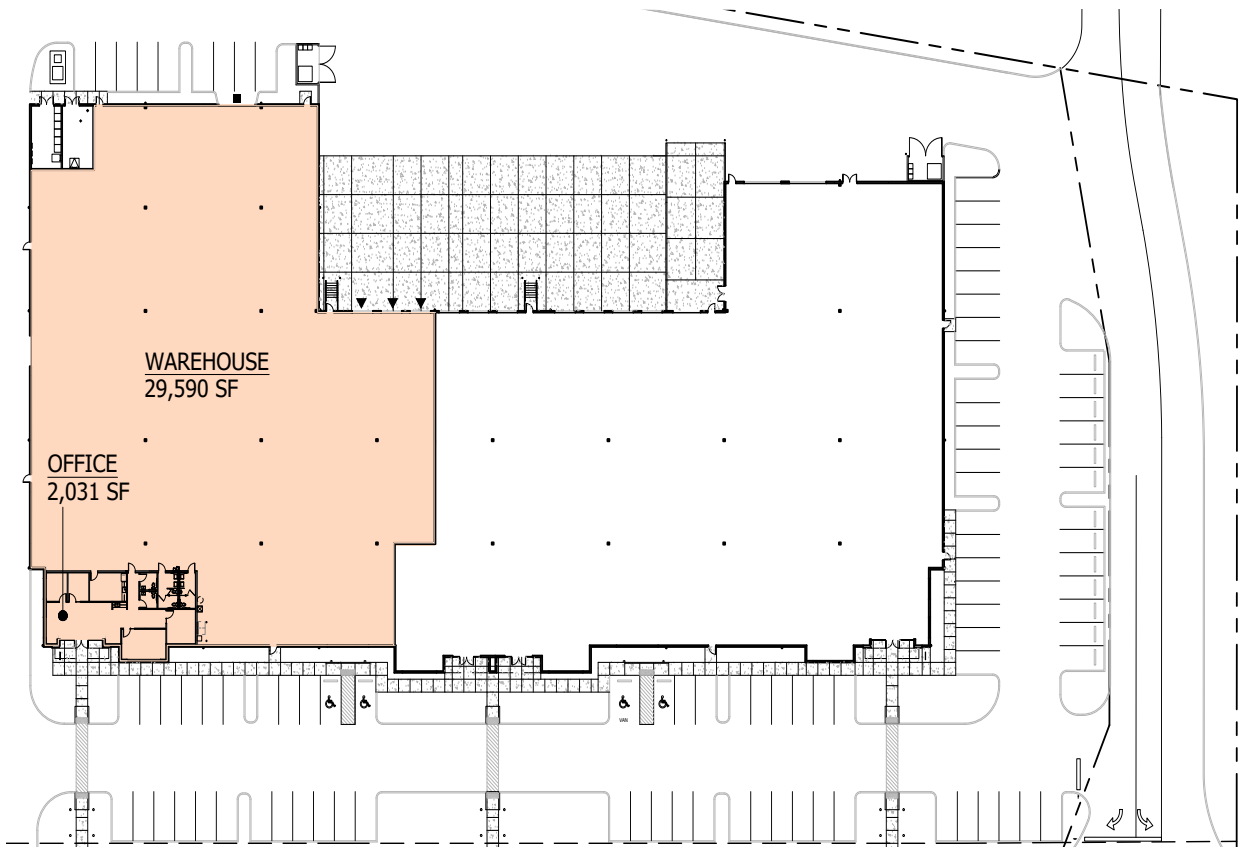
chad.rawlings@eqtpartners.com

19927 67th Avenue NE

Arlington, WA

BUILDING SPECIFICATIONS

Building Size: 66,847 SF
Available Space: 31,621 SF
Office Space: 2,031 SF
Clear Height: 24'
Dock-High Doors: 3 with seals, bumpers, and levelers
Drive-In Doors: 1
Fire Protection: ESFR (K-Factor 25.2 heads)
Power: 1,200 Amps 480/277Y volts, 3-phase, 4-wire (full building)
Lighting: LED motion sensor warehouse lighting



Contact Us

Learn more about this property or schedule a tour by reaching out to our local investment and leasing officer.

Chad Rawlings

+1 (206) 310-4229

chad.rawlings@eqtpartners.com

19927 67th Avenue NE

Arlington, WA

FLOOR PLAN



Contact Us

Learn more about this property or schedule a tour by reaching out to our local investment and leasing officer.

Chad Rawlings

+1 (206) 310-4229

chad.rawlings@eqtpartners.com

19927 67th Avenue NE

Arlington, WA

LOCATION



Contact Us

Learn more about this property or schedule a tour by reaching out to our local investment and leasing officer.

Chad Rawlings

+1 (206) 310-4229

chad.rawlings@eqtpartners.com