

Drawing Index

Civil

C01	COVER SHEET
C02	EXISTING CONDITIONS PLAN
C03	SITE PLAN
C04	TYPICAL SECTIONS
C05	OVERALL UTILITY PLAN
C06	OFFSITE WATER PLAN
C07	OVERALL GRADING PLAN
C08-C09	DOYLE ROAD VERTICAL SIGHT DISTANCE

Legal Description

(PER TITLE COMMITMENT # FTPA19-69370)

PARCEL 1:
LOTS 18 TO 22 INCLUSIVE AND LOTS 157 TO 187, INCLUSIVE, POINSETTA PARK, ACCORDING TO THE MAP OR PLAT THEREOF, AS RECORDED IN MAP BOOK 7, PAGE 117, OF THE PUBLIC RECORDS OF VOLUSIA COUNTY, FLORIDA

PARCEL 2:
LOTS 23 TO 26 INCLUSIVE AND LOTS 124 TO 156 INCLUSIVE, POINSETTA PARK, ACCORDING TO THE MAP OR PLAT THEREOF, AS RECORDED IN MAP BOOK 7, PAGE 117, OF THE PUBLIC RECORDS OF VOLUSIA COUNTY, FLORIDA.

PARCEL 5:
LOTS 188 TO 191 INCLUSIVE AND LOTS 330 TO 346 INCLUSIVE AND LOTS 352 TO 369 INCLUSIVE, POINSETTA PARK, ACCORDING TO THE MAP OR PLAT THEREOF, AS RECORDED IN MAP BOOK 7, PAGE 117, OF THE PUBLIC RECORDS OF VOLUSIA COUNTY, FLORIDA.

PARCEL 6:
LOTS 194 AND 195 AND LOTS 289 TO 304 INCLUSIVE AND LOTS 313 TO 329 INCLUSIVE, POINSETTA PARK, ACCORDING TO THE MAP OR PLAT THEREOF, AS RECORDED IN MAP BOOK 7, PAGE 117, OF THE PUBLIC RECORDS OF VOLUSIA COUNTY, FLORIDA. (AS TO PARCEL 6)

PARCEL 7:
LOTS 200 TO 202 INCLUSIVE AND LOTS 249 TO 262 INCLUSIVE AND LOTS 274 TO 288 INCLUSIVE, POINSETTA PARK, ACCORDING TO THE MAP OR PLAT THEREOF, AS RECORDED IN MAP BOOK 7, PAGE 117, OF THE PUBLIC RECORDS OF VOLUSIA COUNTY, FLORIDA.

PARCEL 8:
LOTS 204 TO 218 INCLUSIVE AND LOTS 235 TO 248 INCLUSIVE, POINSETTA PARK, ACCORDING TO THE MAP OR PLAT THEREOF, AS RECORDED IN MAP BOOK 7, PAGE 117, OF THE PUBLIC RECORDS OF VOLUSIA COUNTY, FLORIDA.

PARCEL 9:
LOTS 221 TO 234 INCLUSIVE, POINSETTA PARK, ACCORDING TO THE MAP OR PLAT THEREOF, AS RECORDED IN MAP BOOK 7, PAGE 117, OF THE PUBLIC RECORDS OF VOLUSIA COUNTY, FLORIDA.

PARCEL 10:
LOTS 263 TO 273 INCLUSIVE, POINSETTA PARK, ACCORDING TO THE MAP OR PLAT THEREOF, AS RECORDED IN MAP BOOK 7, PAGE 117, OF THE PUBLIC RECORDS OF VOLUSIA COUNTY, FLORIDA.

PARCEL 11:
LOTS 305 TO 312 INCLUSIVE, POINSETTA PARK, ACCORDING TO THE MAP OR PLAT THEREOF, AS RECORDED IN MAP BOOK 7, PAGE 117, OF THE PUBLIC RECORDS OF VOLUSIA COUNTY, FLORIDA.

PARCEL 12:
LOTS 347 TO 351 INCLUSIVE, POINSETTA PARK, ACCORDING TO THE MAP OR PLAT THEREOF, AS RECORDED IN MAP BOOK 7, PAGE 117, OF THE PUBLIC RECORDS OF VOLUSIA COUNTY, FLORIDA.

(PER TITLE COMMITMENT # DL201025L)

LOTS 81, 192, 193, 196 AND 197, POINSETTA PARK, ACCORDING TO THE PLAT THEREOF AS RECORDED IN MAP BOOK 7, PAGE 117, OF THE PUBLIC RECORDS OF VOLUSIA COUNTY, FLORIDA.

(PER TITLE COMMITMENT # 1346307)

LOT 203, 219, AND 220, BLOCK 5, POINSETTA PARK, ACCORDING TO THE MAP OR PLAT THEREOF, AS RECORDED IN MAP BOOK 7, PAGE 117, OF THE PUBLIC RECORDS OF VOLUSIA COUNTY, FLORIDA. LESS LOT 81, POINSETTA PARK, ACCORDING TO THE PLAT THEREOF AS RECORDED IN MAP BOOK 7, PAGE 117, OF THE PUBLIC RECORDS OF VOLUSIA COUNTY, FLORIDA.

DEWBERRY ENGINEERS INC.
800 NORTH MAGNOLIA AVE. SUITE 1000
ORLANDO, FL 32803
CERTIFICATE OF AUTHORIZATION: 8794
MITCHELL D. CALLAWAY, P.E. NO. 93106

THE PROFESSIONAL ENGINEER SHALL BE RESPONSIBLE FOR THE FOLLOWING SHEETS IN ACCORDANCE WITH RULE 61G15-23.004, F.A.C.

C01	COVER SHEET
C03	SITE PLAN
C04	TYPICAL SECTIONS
C05	OVERALL UTILITY PLAN
C06	OFFSITE WATER PLAN
C07	OVERALL GRADING PLAN
C08-C09	DOYLE ROAD VERTICAL SIGHT DISTANCE

PRINTED COPIES OF THIS DOCUMENT ARE NOT CONSIDERED SIGNED AND SEALED. THE SIGNATURE MUST BE VERIFIED IN THE ELECTRONIC DOCUMENTS.

DOYLE ESTATES

City of Deltona, Volusia County, Florida OVERALL DEVELOPMENT PLAN

SUBMITTAL

JULY 2025

PARCEL IDS

9111-03-00-0180, 9111-03-00-0230, 9111-03-00-1880,
9111-03-00-1920, 9111-03-00-1940, 9111-03-00-1960,
9111-03-00-2000, 9111-03-00-2030, 9111-03-00-2040,
9111-03-00-2190, 9111-03-00-2210, 9111-03-00-2630,
9111-03-00-3050, 9111-03-00-3470



Call 811 or visit sunshine811.com two full business days before digging to have buried facilities located and marked.

Check positive response codes before you dig!

NOTE:
FLORIDA LAW (F.S. 556) UNDERGROUND FACILITY DAMAGE PREVENTION AND SAFETY ACT MANDATES THAT EXCAVATORS/CONTRACTORS SHALL CONTACT SUNSHINE 811 (FKA: SUNSHINE STATE ONE-CALL OF FLORIDA) BY CALLING 800-422-4770 OR 811 AT LEAST 2 FULL BUSINESS DAYS PRIOR TO BEGINNING ANY EXCAVATION OR DEMOLITION TO ALLOW MEMBER OPERATORS AN OPPORTUNITY TO IDENTIFY AND MARK THEIR UNDERGROUND FACILITIES AND APPROPRIATELY RESPOND TO THE POSITIVE RESPONSE SYSTEM.

PROPOSED DESIGN SPEED: 25 MPH

Owner

POINSETTA HOLDINGS, LLC
36 CHARMING WAY
LAKEWOOD, NJ 08701
PHONE: 437-922-5793
CONTACT: MARK GOLDSHMIDT

Civil Engineer

DEWBERRY ENGINEERS, INC.
800 NORTH MAGNOLIA AVENUE
SUITE 1000
ORLANDO, FL 32803
PHONE: 321-354-9769
CONTACT: MITCHELL CALLAWAY, PE

Surveyor

DEWBERRY ENGINEERS, INC.
800 NORTH MAGNOLIA AVENUE
SUITE 1000
ORLANDO, FLORIDA 32803
CONTACT: BILL HINKLE
PHONE: 321-354-9837

Landscape Architect

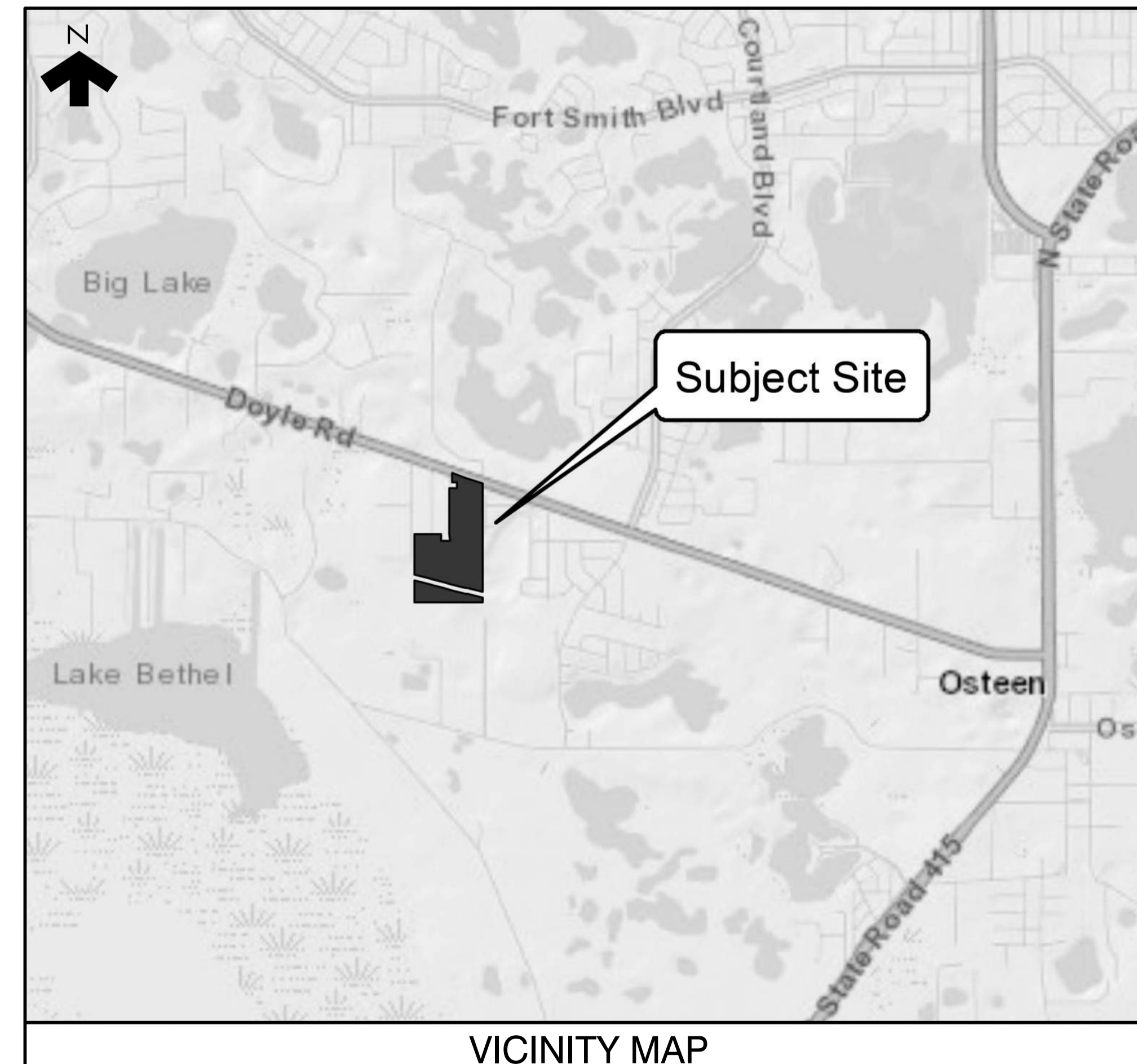
DEWBERRY ENGINEERS, INC.
800 NORTH MAGNOLIA AVENUE
SUITE 1000
ORLANDO, FL 32803
PHONE: 321-354-9744
CONTACT: MICHAEL URCHUK, LA

Environmental

ECOLOGICAL CONSULTING SOLUTIONS, INC.
410 NORTH STREET, UNIT 130
LONGWOOD, FL 32750
PHONE: 407-869-9434
CONTACT: BILL GRIFFIY

Geotechnical Engineer

UNIVERSAL ENGINEERING SCIENCES, INC.
911 BEVILLE ROAD
SOUTH DAYTONA, FL 32119
PHONE: 386-756-1105
CONTACT: CODY D. WILSON, PE



SCALE: 1"=2000'

SECTS. 7 & 8, T 27 S, R 26 E



Dewberry Engineers Inc.
800 NORTH MAGNOLIA AVE
SUITE 1000
ORLANDO, FL 32803
PHONE: 407.843.5120
ENGINEERING BUSINESS -8794

DOYLE ESTATES
OVERALL DEVELOPMENT PLAN
CITY OF DELTONA
VOLUSIA COUNTY, FLORIDA

Mitchell D Callaway, P.E. FL PE # 93106
7/8/2025

REVISIONS

No.	DATE	BY	Description
4	7-2025	TFS	REV PER COUNTY
3	6-2025	SKH	REV PER COUNTY
2	4-2025	TFS	REV PER CLIENT
1	2-2025	TFS	REV PER COUNTY

PROJECT # 50182364
DRAWN BY TFS
APPROVED BY MDC
CHECKED BY DB
DATE OCTOBER 2024
DATUM NAVD 88

TITLE

COVER SHEET

PROJECT: Q:\POPK_50168509\CAD\Civil\ODP\dgn\01-POPK_ODP-Cover.dgn
SHEET NO.

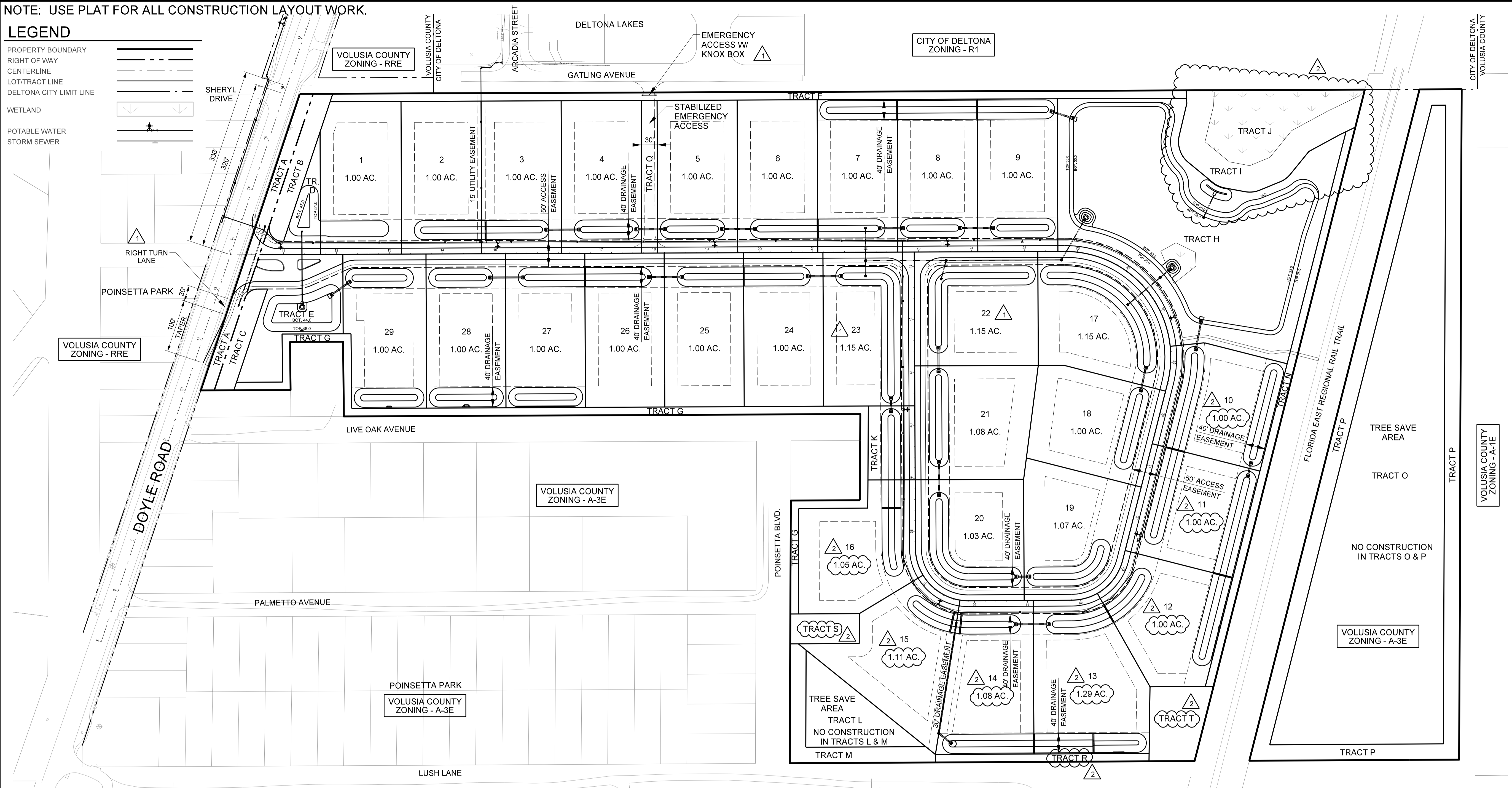
C01

NOTE: USE PLAT FOR ALL CONSTRUCTION LAYOUT WORK.

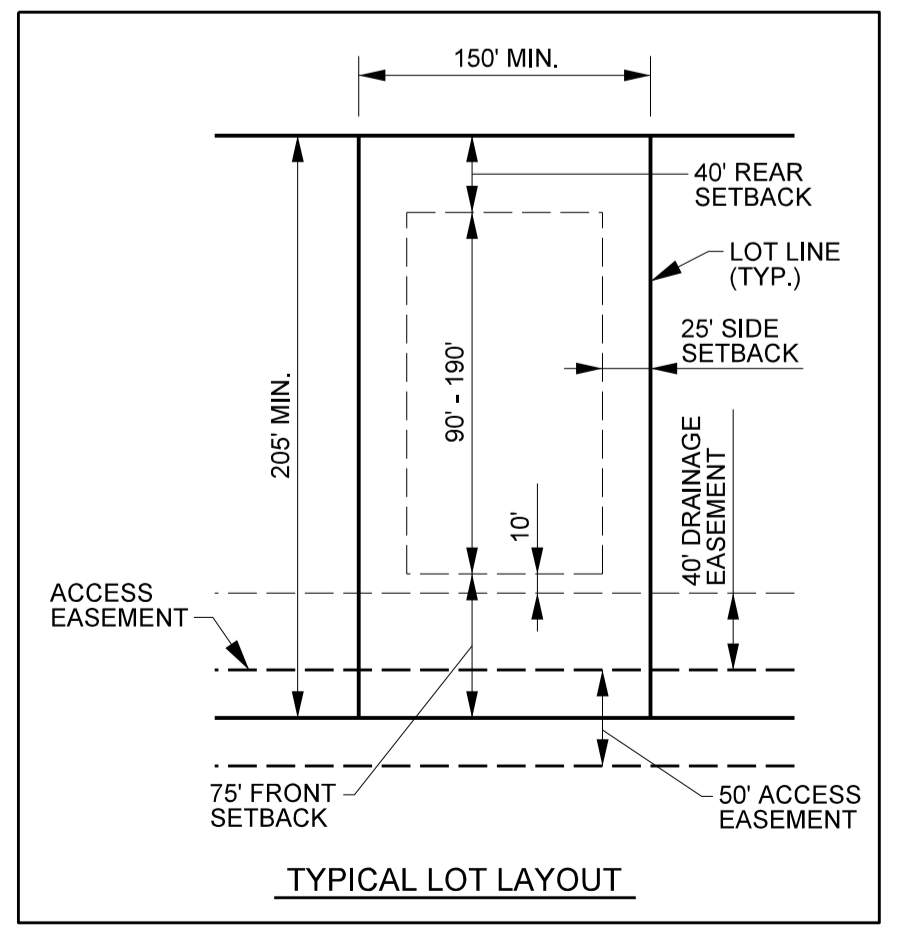
LEGEND

PROPERTY BOUNDARY	
RIGHT OF WAY CENTERLINE	
LOT/TRACT LINE	
DELTONA CITY LIMIT LINE	
WETLAND	
POTABLE WATER	
STORM SEWER	

E
D
C
B
A



TRACT	AREA (AC)	DESCRIPTION	USE	OWNERSHIP	MAINTENANCE
A	0.32	R.O.W. DEDICATION	R.O.W. DEDICATION	COUNTY	VOLUSIA COUNTY
B	0.23	LANDSCAPE BUFFER	LANDSCAPE BUFFER	HOA	HOME OWNERS ASSOCIATION
C	0.16	LANDSCAPE BUFFER	LANDSCAPE BUFFER	HOA	HOME OWNERS ASSOCIATION
D	0.23	OPEN SPACE	POND ENT-1	HOA	HOME OWNERS ASSOCIATION
E	0.71	OPEN SPACE	POND ENT-2	HOA	HOME OWNERS ASSOCIATION
F	0.56	LANDSCAPE BUFFER	LANDSCAPE BUFFER	HOA	HOME OWNERS ASSOCIATION
G	0.67	LANDSCAPE BUFFER	LANDSCAPE BUFFER	HOA	HOME OWNERS ASSOCIATION
H	3.77	OPEN SPACE/RETENTION	POND N-02	HOA	HOME OWNERS ASSOCIATION
I	0.56	WETLAND BUFFER	WETLAND BUFFER	HOA	HOME OWNERS ASSOCIATION
J	0.57	WETLAND	WETLAND	HOA	HOME OWNERS ASSOCIATION
K	0.28	OPEN SPACE	OPEN SPACE	HOA	HOME OWNERS ASSOCIATION
L	0.48	TREE SAVE AREA	TREE SAVE AREA	HOA	HOME OWNERS ASSOCIATION
M	0.32	LANDSCAPE BUFFER	TREE SAVE AREA	HOA	HOME OWNERS ASSOCIATION
N	0.37	LANDSCAPE BUFFER	LANDSCAPE BUFFER	HOA	HOME OWNERS ASSOCIATION
O	4.90	TREE SAVE AREA	TREE SAVE AREA	HOA	HOME OWNERS ASSOCIATION
P	2.02	LANDSCAPE BUFFER	TREE SAVE AREA	HOA	HOME OWNERS ASSOCIATION
Q	0.20	EMERGENCY FIRE ACCESS	INGRESS/EGRESS	HOA	HOME OWNERS ASSOCIATION
R	0.14	LANDSCAPE BUFFER	LANDSCAPE BUFFER	HOA	HOME OWNERS ASSOCIATION
S	0.17	OPEN SPACE	OPEN SPACE	HOA	HOME OWNERS ASSOCIATION
T	0.33	OPEN SPACE	OPEN SPACE	HOA	HOME OWNERS ASSOCIATION



NOTES:
 1. "NO PARKING" SIGNS TO BE INSTALLED ON BOTH SIDES OF THE ROADWAY THROUGHOUT THE DEVELOPMENT.
 2. SPEED LIMIT SIGNS SHALL BE SHOWN ON THE STRIPING & SIGNAGE PLAN IN THE FINAL ENGINEERING SUBMITTAL.
 3. FFPC NFPA 1:16.1.4 FIRE APPARATUS ACCESS ROADS PROVIDED IN ACCORDANCE WITH 18.2.3 SHALL BE PROVIDED AT THE START OF A PROJECT AND SHALL BE MAINTAINED THROUGHOUT CONSTRUCTION.
 4. FFPC NFPA 1:16.5.3.1.3* WHERE UNDERGROUND WATER MAINS AND HYDRANTS ARE TO BE PROVIDED, THEY SHALL BE INSTALLED, COMPLETED, AND IN SERVICE PRIOR TO COMMENCING CONSTRUCTION WORK ON ANY STRUCTURE. [241:8.7.2.3]
 5. FFPC NFPA 1:16.1.1 STRUCTURES UNDERGOING CONSTRUCTION, ALTERATION, OR DEMOLITION OPERATIONS, INCLUDING THOSE IN UNDERGROUND LOCATIONS, SHALL COMPLY WITH NFPA 241 AND THIS CHAPTER.
 6. NO CONSTRUCTION IS PROPOSED WITHIN TRACTS O & P. WETLAND LINES WITHIN TRACTS O & P ARE NOT INCLUDED WITHIN THIS APPLICATION AND WOULD REQUIRE APPROVAL FROM SJRWMD FOR ANY FUTURE DEVELOPMENT.

3,327 LF OF PRIVATE ROADWAY
 MINIMUM LOT = 150' (W) X 205' (D)
 MINIMUM PAD = 70' (W) X 90' (D)
 NOTE:
 LOT WIDTH MEASURED AT 75' FRONT SETBACK
 MINIMUM BUILDING SETBACKS: SINGLE FAMILY
 FRONT 75'
 REAR 40'
 SIDE 25'

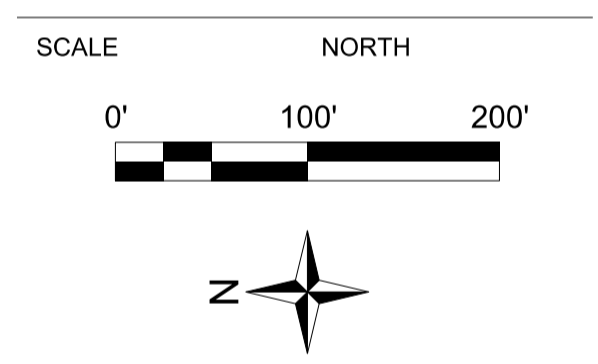
SITE DATA

EXISTING ZONING: A-3E
 EXISTING LAND USE: R
 FUTURE LAND USE: R
 TOTAL SITE AREA: 47.48 AC
 DEVELOPABLE AREA: 38.01 AC
 (DEV. AREA = TOTAL SITE - TREE SAVE - WETLAND - BUFFER - R.O.W. DEDICATION)
 TREE SAVE REQUIRED = 7.08 AC (15%)
 TREE SAVE PROPOSED = 7.72 AC (16.4%)
 NUMBER OF LOTS: 29
 DENSITY: 0.76 DU/AC
 LAND USE AREAS:
 RESIDENTIAL (LOTS) 30.19 AC
 RIGHT-OF-WAY DEDICATION 0.32 AC
 RETENTION AREA 4.71 AC
 OPEN SPACE 0.78 AC
 LANDSCAPE BUFFER 2.13 AC
 TREE SAVE/TREE SAVE BUFFER 7.72 AC
 EMERGENCY FIRE ACCESS 0.20 AC
 WETLAND 0.57 AC
 WETLAND BUFFER 0.56 AC

Dewberry
 Dewberry Engineers Inc.
 800 NORTH MAGNOLIA AVE
 SUITE 1000
 ORLANDO, FL 32803
 PHONE: 407.843.5120
 ENGINEERING BUSINESS - 8794

**DOYLE ESTATES
 OVERALL
 DEVELOPMENT PLAN**

Mitchell D Callaway, P.E. FL PE # 93106
 7/8/2025



REVISIONS

No.	DATE	BY	Description
2	4-2025	TFS	REV PER CLIENT
1	2-2025	TFS	REV PER COUNTY

PROJECT # 50182364
 DRAWN BY TFS
 APPROVED BY MDC
 CHECKED BY DB
 DATE OCTOBER 2024
 DATUM NAVD 88
 TITLE

SITE PLAN

PROJECT: Q:\POPK_50168509\CAD\Civil\ODP\dgn\03-POPK_ODP-SitePlan.dgn
 SHEET NO.

C03

REVISIONS

No.	DATE	BY	REV PER COUNTY	Description
1	2-2025	TFS	REV PER COUNTY	

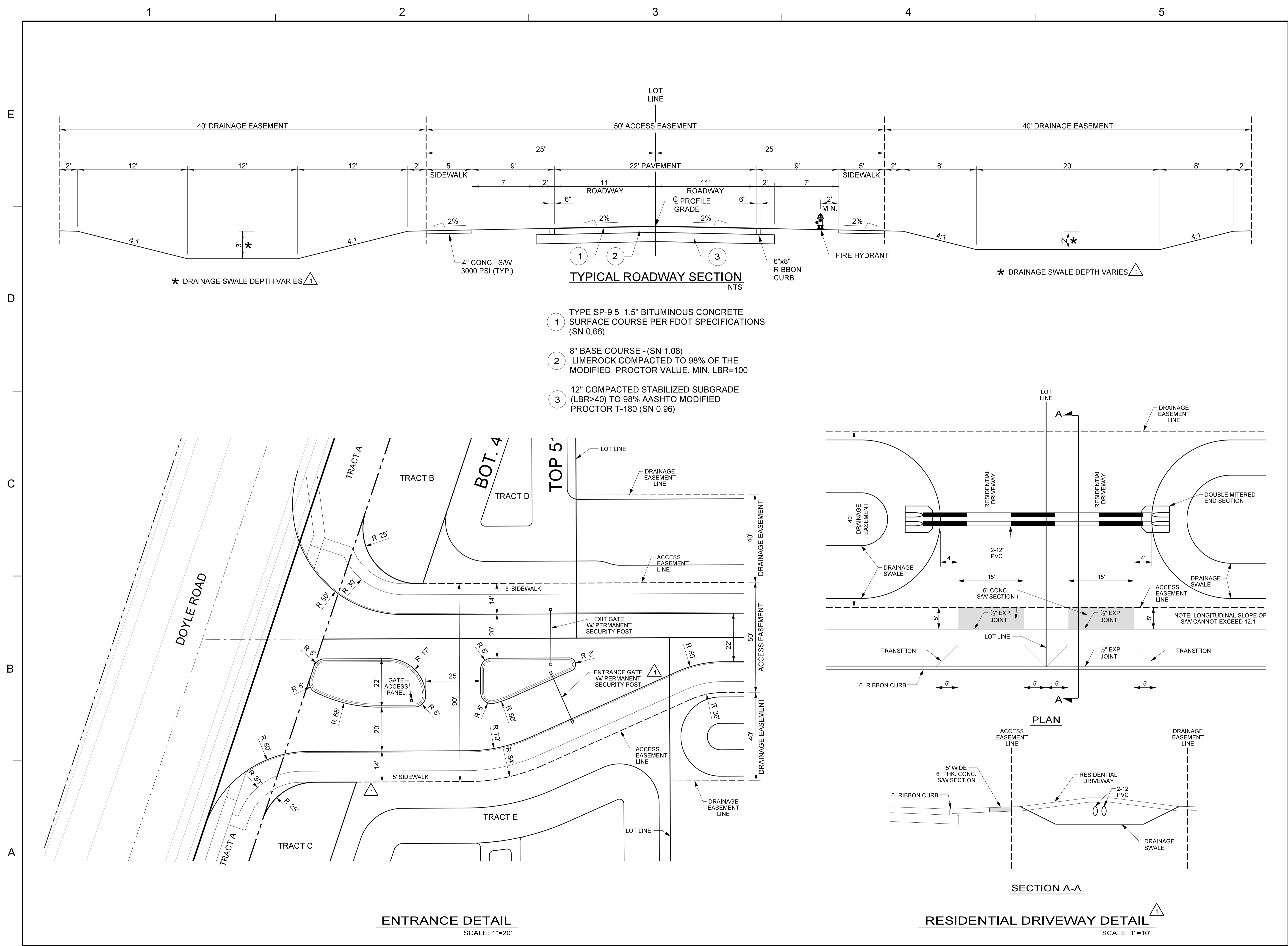
PROJECT # 50182364
 DRAWN BY TFS
 APPROVED BY MDC
 CHECKED BY DB
 DATE OCTOBER 2024
 DATUM NAVD 88

TITLE

TYPICAL SECTIONS

PROJECT: Q:\POPK_50168509\CAD\Civil\ODP\dgn\04-POPK_ODP-TypicalSections.dgn
 SHEET NO.

C04



- TYPICAL ROADWAY SECTION**
 NTS
- 1 TYPE SP-9.5 1.5" BITUMINOUS CONCRETE SURFACE COURSE PER FDOT SPECIFICATIONS (SN 0.66)
 - 2 8" BASE COURSE - (SN 1.08) LIMEROCK COMPACTED TO 98% OF THE MODIFIED PROCTOR VALUE. MIN. LBR=100
 - 3 12" COMPACTED STABILIZED SUBGRADE (LBR>40) TO 98% AASHTO MODIFIED PROCTOR T-180 (SN 0.96)

ENTRANCE DETAIL
 SCALE: 1"=20'

RESIDENTIAL DRIVEWAY DETAIL
 SCALE: 1"=10'

LEGEND

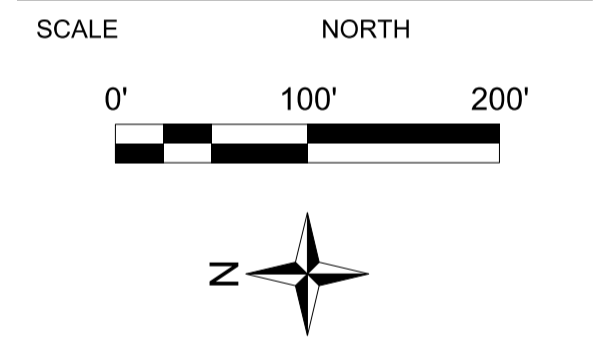
- PROPERTY BOUNDARY
- ACCESS EASEMENT
- CENTERLINE
- LOT / TRACT LINE
- POTABLE WATER
- STORMWATER PIPE



Dewberry Engineers Inc.
 800 NORTH MAGNOLIA AVE
 SUITE 1000
 ORLANDO, FL 32803
 PHONE: 407.843.5120
 ENGINEERING BUSINESS -8794

DOYLE ESTATES
OVERALL DEVELOPMENT PLAN
 CITY OF DELTONA
 VOLUSIA COUNTY, FLORIDA

7/8/2025



REVISIONS

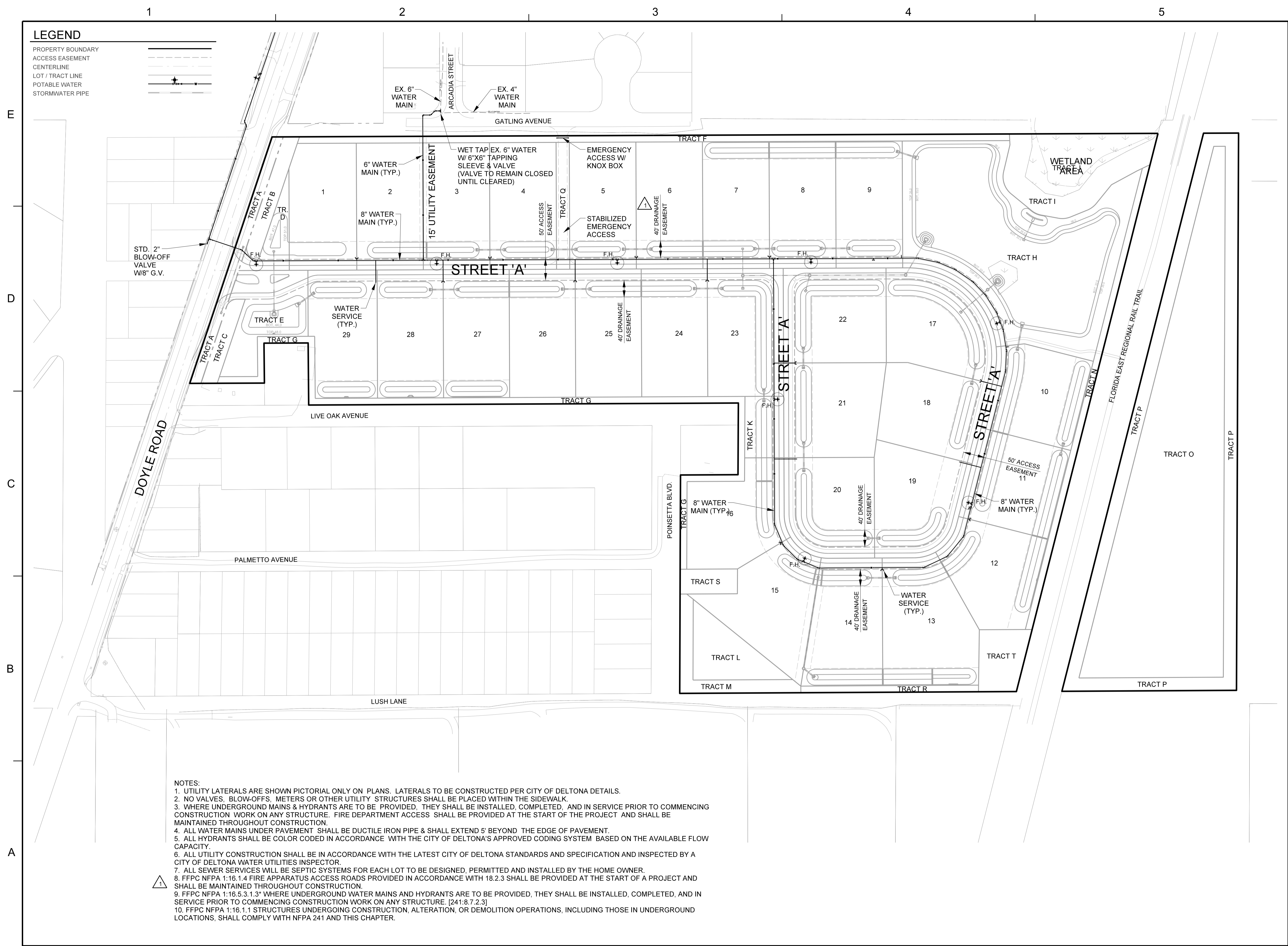
No.	DATE	BY	REV PER COUNTY	Description
1	2-2025	TFS	REV PER COUNTY	

PROJECT # 50182364
 DRAWN BY TFS
 APPROVED BY MDC
 CHECKED BY DB
 DATE OCTOBER 2024
 DATUM NAVD 88

OVERALL UTILITY PLAN

PROJECT: Q:\POPK_50168509\CAD\Civil\ODP\dgn\05-POPK_ODP-OverallUtility.dgn
 SHEET NO.

C05



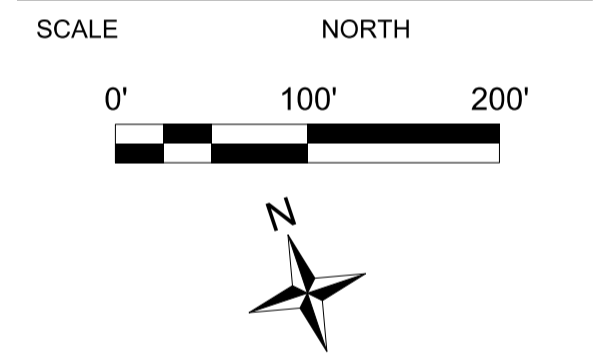
- NOTES:**
1. UTILITY LATERALS ARE SHOWN PICTORIAL ONLY ON PLANS. LATERALS TO BE CONSTRUCTED PER CITY OF DELTONA DETAILS.
 2. NO VALVES, BLOW-OFFS, METERS OR OTHER UTILITY STRUCTURES SHALL BE PLACED WITHIN THE SIDEWALK.
 3. WHERE UNDERGROUND MAINS & HYDRANTS ARE TO BE PROVIDED, THEY SHALL BE INSTALLED, COMPLETED, AND IN SERVICE PRIOR TO COMMENCING CONSTRUCTION WORK ON ANY STRUCTURE. FIRE DEPARTMENT ACCESS SHALL BE PROVIDED AT THE START OF THE PROJECT AND SHALL BE MAINTAINED THROUGHOUT CONSTRUCTION.
 4. ALL WATER MAINS UNDER PAVEMENT SHALL BE DUCTILE IRON PIPE & SHALL EXTEND 5' BEYOND THE EDGE OF PAVEMENT.
 5. ALL HYDRANTS SHALL BE COLOR CODED IN ACCORDANCE WITH THE CITY OF DELTONA'S APPROVED CODING SYSTEM BASED ON THE AVAILABLE FLOW CAPACITY.
 6. ALL UTILITY CONSTRUCTION SHALL BE IN ACCORDANCE WITH THE LATEST CITY OF DELTONA STANDARDS AND SPECIFICATION AND INSPECTED BY A CITY OF DELTONA WATER UTILITIES INSPECTOR.
 7. ALL SEWER SERVICES WILL BE SEPTIC SYSTEMS FOR EACH LOT TO BE DESIGNED, PERMITTED AND INSTALLED BY THE HOME OWNER.
 8. FFPC NFPA 1:16.1.4 FIRE APPARATUS ACCESS ROADS PROVIDED IN ACCORDANCE WITH 18.2.3 SHALL BE PROVIDED AT THE START OF A PROJECT AND SHALL BE MAINTAINED THROUGHOUT CONSTRUCTION.
 9. FFPC NFPA 1:16.5.3.1.3* WHERE UNDERGROUND WATER MAINS AND HYDRANTS ARE TO BE PROVIDED, THEY SHALL BE INSTALLED, COMPLETED, AND IN SERVICE PRIOR TO COMMENCING CONSTRUCTION WORK ON ANY STRUCTURE. [241:8.7.2.3]
 10. FFPC NFPA 1:16.1.1 STRUCTURES UNDERGOING CONSTRUCTION, ALTERATION, OR DEMOLITION OPERATIONS, INCLUDING THOSE IN UNDERGROUND LOCATIONS, SHALL COMPLY WITH NFPA 241 AND THIS CHAPTER.



Dewberry Engineers Inc.
 800 NORTH MAGNOLIA AVE
 SUITE 1000
 ORLANDO, FL 32803
 PHONE: 407.843.5120
 ENGINEERING BUSINESS - 8794

DOYLE ESTATES
 OVERALL
 DEVELOPMENT PLAN
 CITY OF DELTONA
 VOLUSIA COUNTY, FLORIDA

7/8/2025



REVISIONS

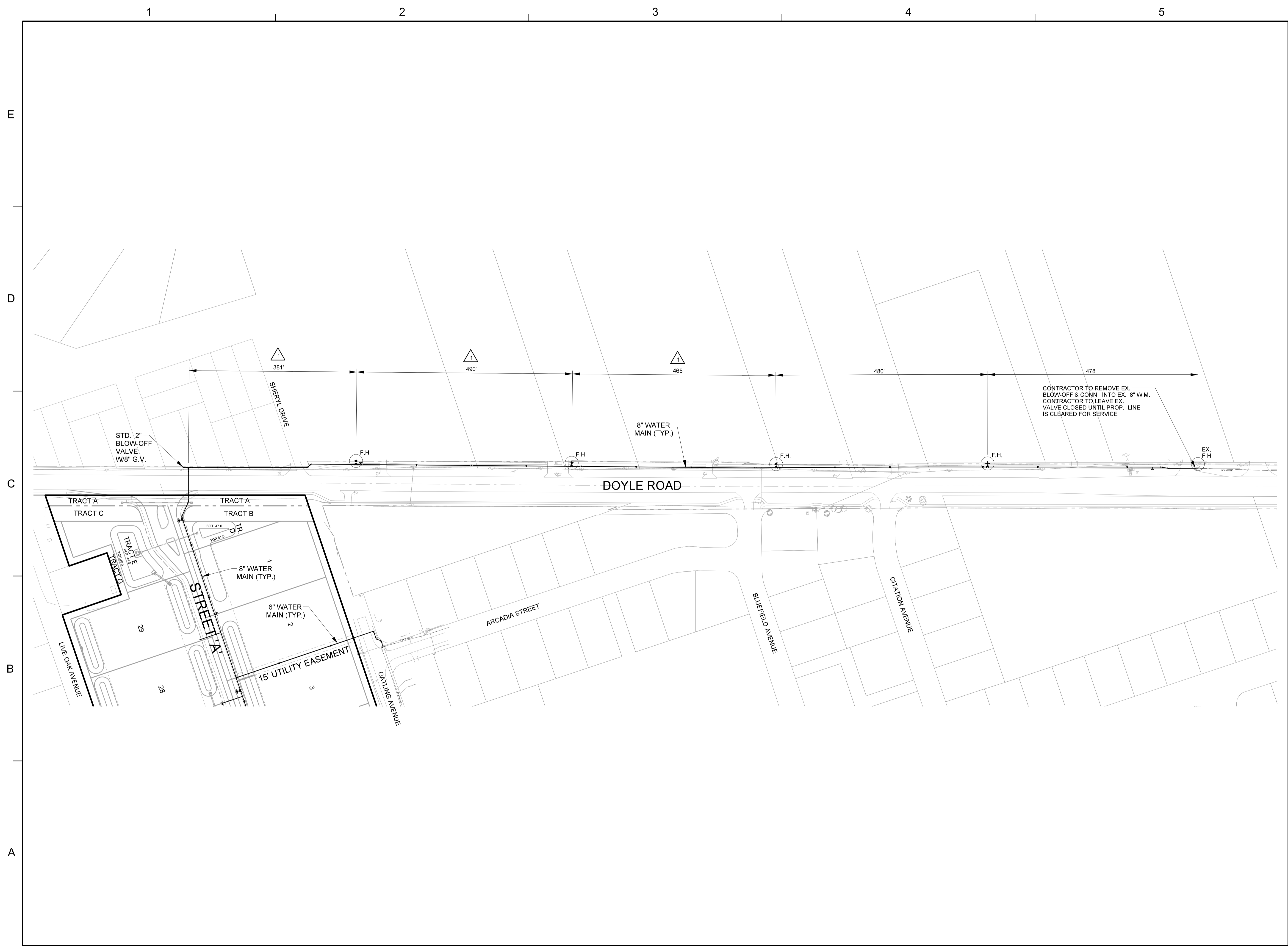
No.	DATE	BY	REV PER COUNTY	Description
1	2-2025	TFS	REV PER COUNTY	

PROJECT # 50182364
 DRAWN BY TFS
 APPROVED BY MDC
 CHECKED BY DB
 DATE OCTOBER 2024
 DATUM NAVD 88

OFFSITE
 WATER
 PLAN

PROJECT: Q:\POPK_50168509\CAD\Civil\ODP\dgn\06-POPK_ODP-OffsiteWater.dgn
 SHEET NO.

C06

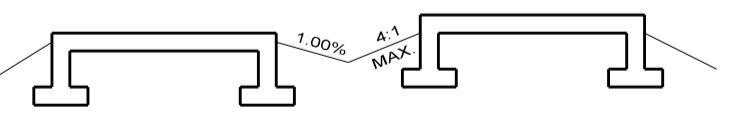
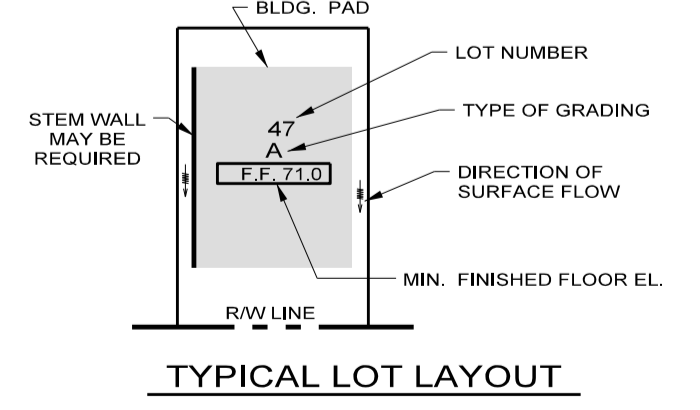
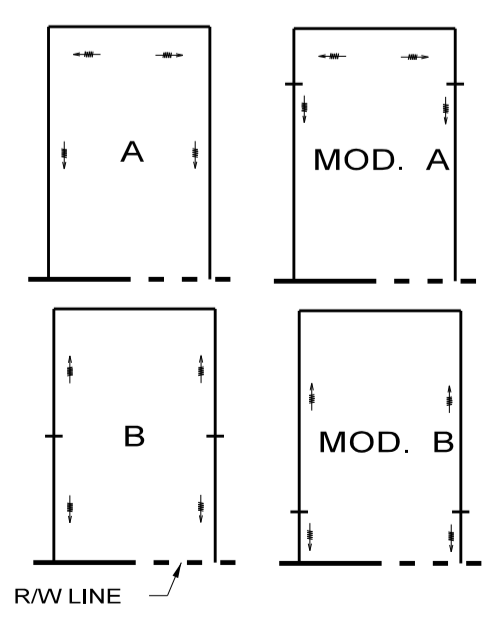
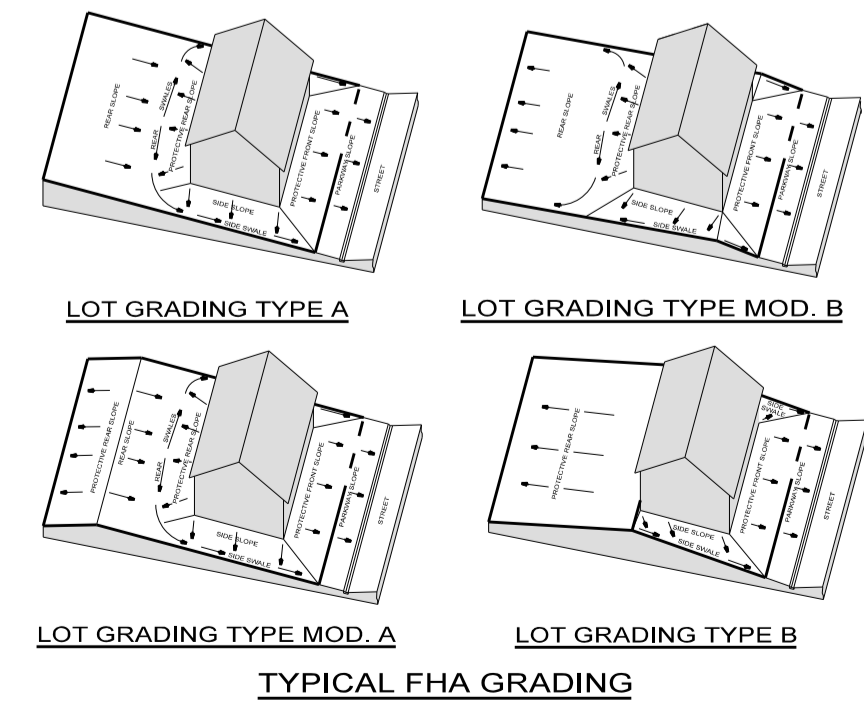
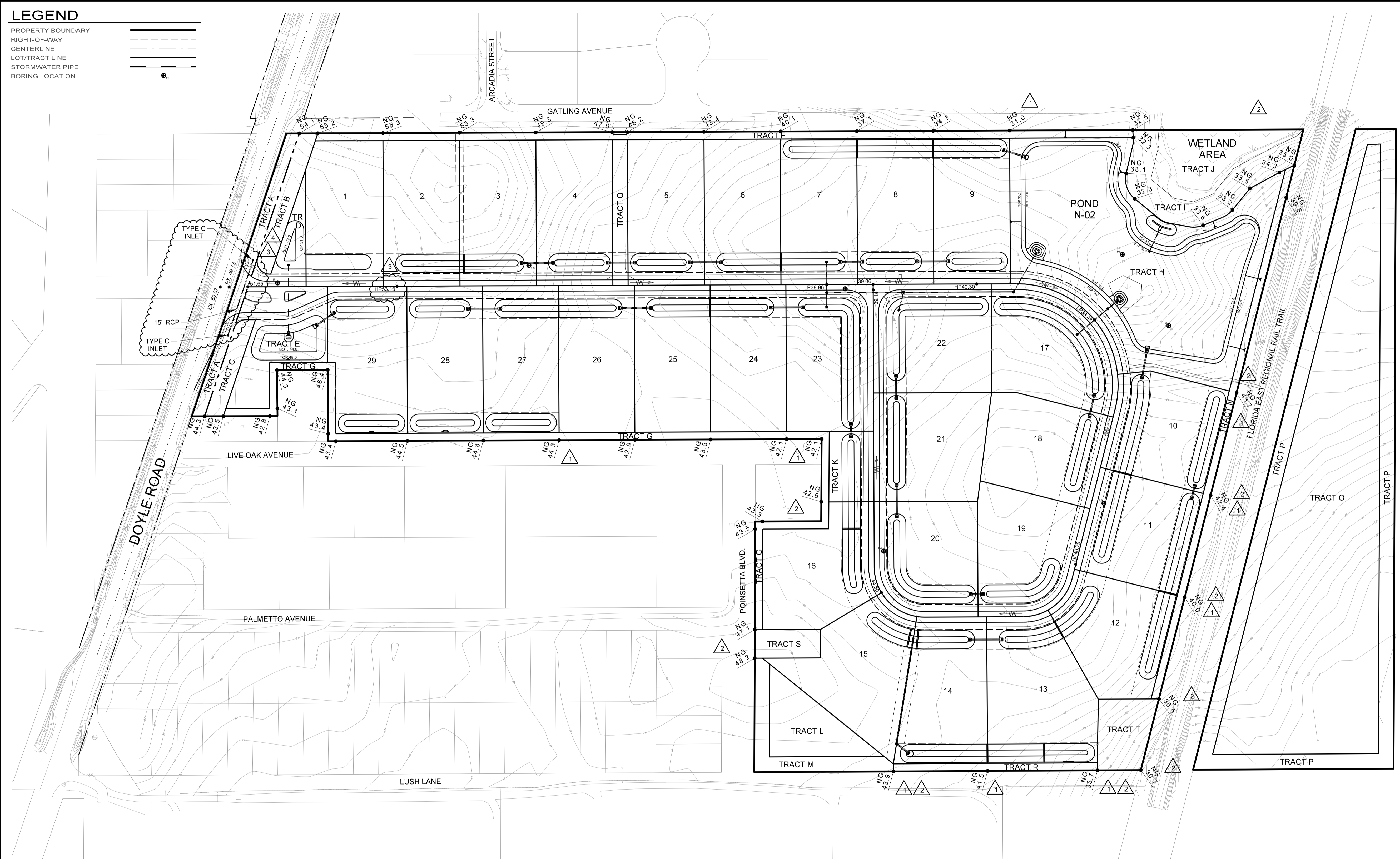


LEGEND

- PROPERTY BOUNDARY
- RIGHT-OF-WAY
- CENTERLINE
- LOT/TRACT LINE
- STORMWATER PIPE
- BORING LOCATION

1 2 3 4 5

E
D
C
B
A



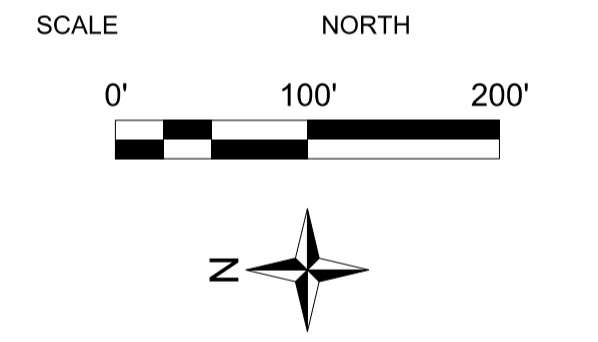
NOTE
SITE GRADE CONTRACTOR TO GRADE BLDG. PAD AREA WITHIN SETBACK TO 0.7' BELOW FINISHED FLOOR ELEV.

NOTE:
THE CONTRACTOR SHALL OBTAIN ANY AND ALL GEOTECHNICAL REPORTS AND CONSTRUCT ACCORDING TO THE RECOMMENDATION AND REQUIREMENTS SET FORTH IN SAID REPORTS. ANY CONFLICTS BETWEEN THE GEOTECHNICAL REPORT AND THE ENGINEERING PLANS SHALL BE BROUGHT TO THE ATTENTION OF THE ENGINEER PRIOR TO CONSTRUCTION ACTIVITIES.

Dewberry
Dewberry Engineers Inc.
800 NORTH MAGNOLIA AVE
SUITE 1000
ORLANDO, FL 32803
PHONE: 407.843.5120
ENGINEERING BUSINESS -8794

DOYLE ESTATES
OVERALL
DEVELOPMENT PLAN
CITY OF DELTONA
VOLUSIA COUNTY, FLORIDA

7/8/2025



REVISIONS

No.	DATE	BY	Description
4	7-2025	TFS	REV PER COUNTY
3	6-2025	SKH	REV PER COUNTY
2	4-2025	TFS	REV PER CLIENT
1	2-2025	TFS	REV PER COUNTY

PROJECT # 50182364
DRAWN BY TFS
APPROVED BY MDC
CHECKED BY DB
DATE OCTOBER 2024
DATUM NAVD 88

OVERALL
GRADING
PLAN

PROJECT: Q:\POPK_50168509\CAD\Civil\ODP\dgn\07-POPK_ODP-OverallGrading.dgn
SHEET NO.

C07

NOTE: USE PLAT FOR ALL CONSTRUCTION LAYOUT WORK.

LEGEND

- PROPERTY BOUNDARY
- RIGHT OF WAY
- CENTERLINE
- LOT / TRACT LINE
- STORMWATER PIPE



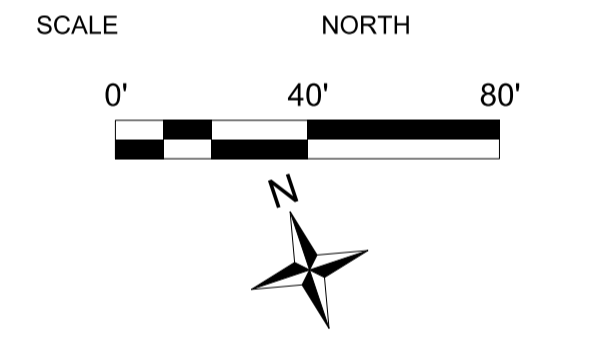
Dewberry Engineers Inc.
 800 NORTH MAGNOLIA AVE
 SUITE 1000
 ORLANDO, FL 32803
 PHONE: 407.843.5120
 ENGINEERING BUSINESS - 8794

**DOYLE ESTATES
 OVERALL
 DEVELOPMENT PLAN**

CITY OF DELTONA
 VOLUSIA COUNTY, FLORIDA

Mitchell D Callaway, P.E. FL PE # 93106
 7/8/2025

KEY PLAN



REVISIONS

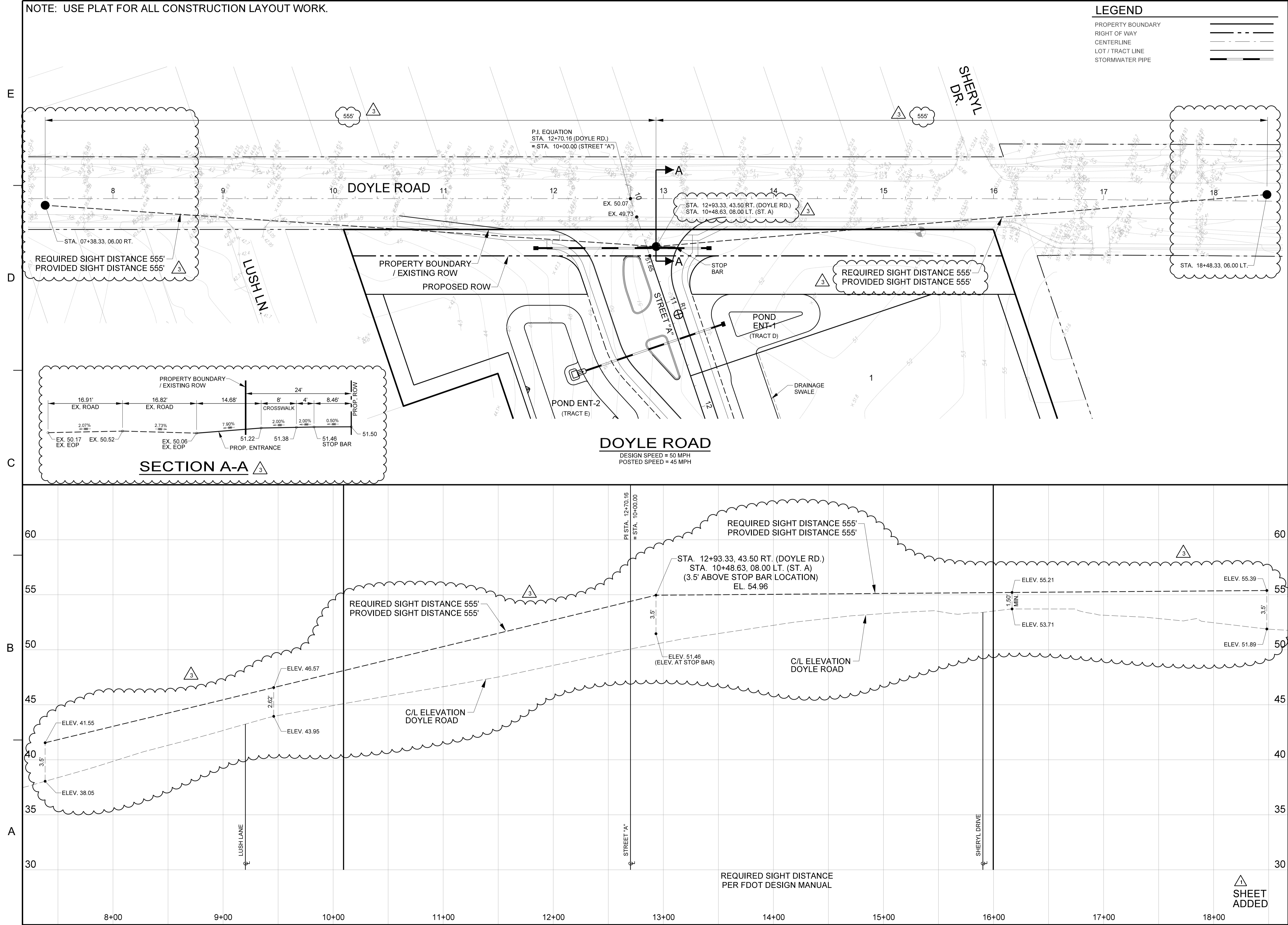
No.	DATE	BY	Description
3	6-2025	SKH	REV PER COUNTY
1	2-2025	TFS	REV PER COUNTY

PROJECT # 50182364
 DRAWN BY TFS
 APPROVED BY MDC
 CHECKED BY DB
 DATE OCTOBER 2024
 DATUM NAVD 88

**DOYLE ROAD
 VERTICAL SIGHT
 DISTANCE**

PROJECT: Q:\POPK_50168509\CAD\Civil\ODP\dgn\08-POPK_ODP-DoyleSiteDistance.dgn
 SHEET NO.

C08



NOTE: USE PLAT FOR ALL CONSTRUCTION LAYOUT WORK.

LEGEND

- PROPERTY BOUNDARY
- RIGHT OF WAY
- CENTERLINE
- LOT / TRACT LINE
- STORMWATER PIPE

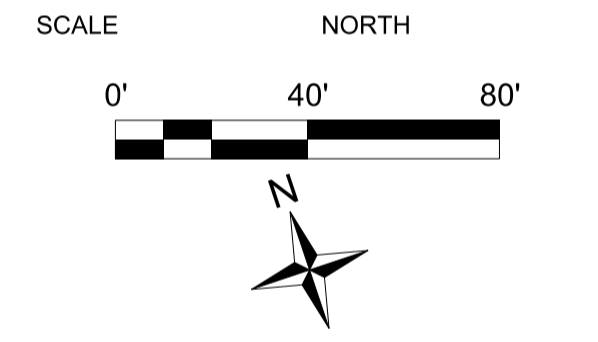


Dewberry Engineers Inc.
800 NORTH MAGNOLIA AVE
SUITE 1000
ORLANDO, FL 32803
PHONE: 407.843.5120
ENGINEERING BUSINESS -8794

DOYLE ESTATES
OVERALL DEVELOPMENT PLAN
 CITY OF DELTONA
 VOLUSIA COUNTY, FLORIDA

Mitchell D Callaway, P.E. FL PE # 93106
7/8/2025

KEY PLAN



REVISIONS

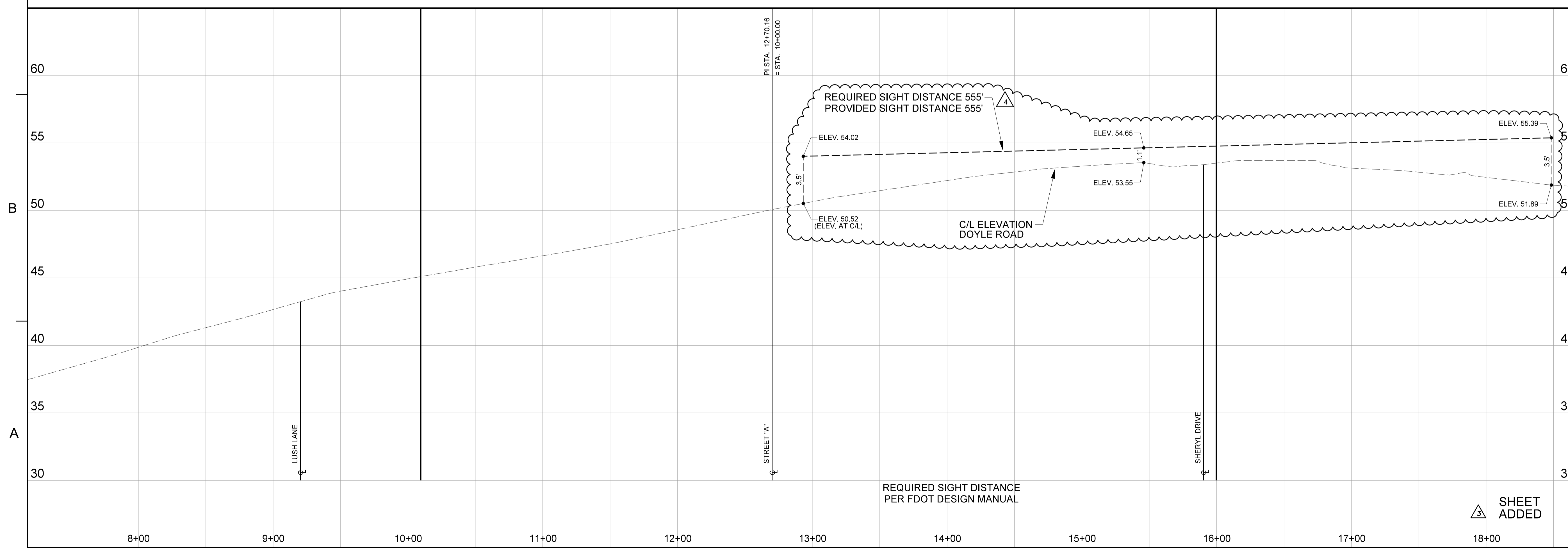
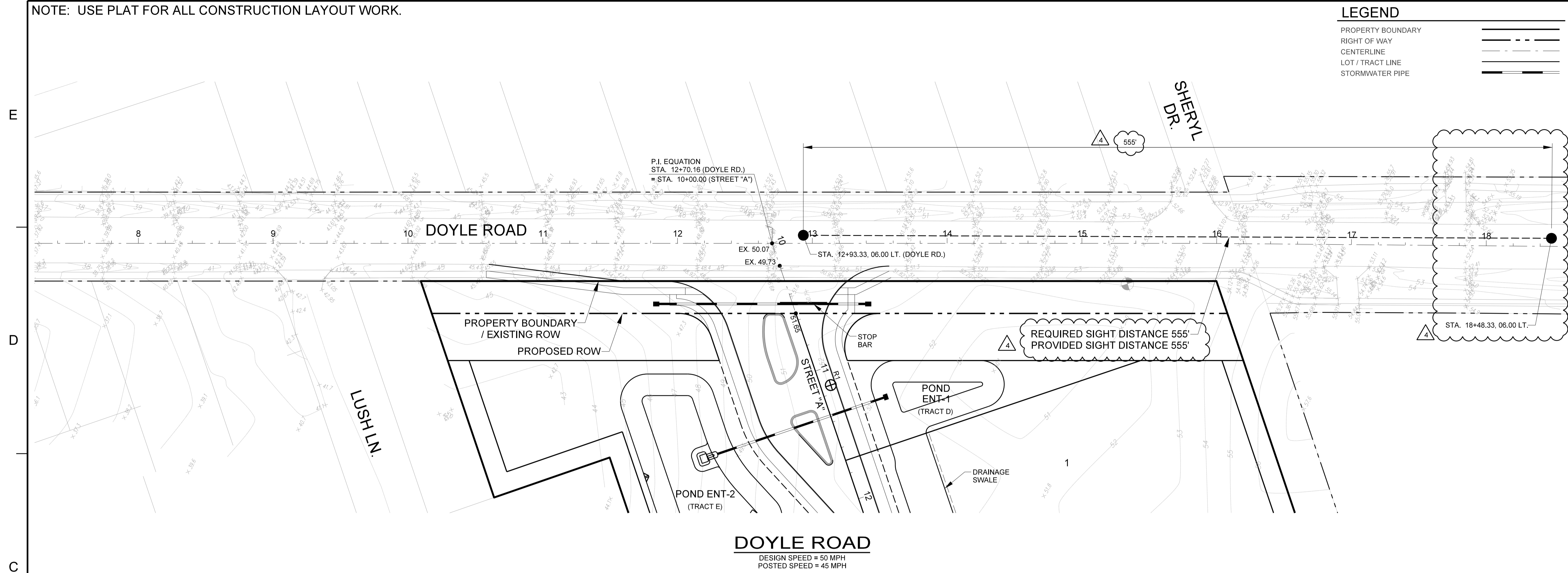
No.	DATE	BY	Description
4	7-2025	TFS	REV PER COUNTY
3	6-2025	SKH	REV PER COUNTY

PROJECT # 50182364
 DRAWN BY TFS
 APPROVED BY MDC
 CHECKED BY DB
 DATE OCTOBER 2024
 DATUM NAVD 88

DOYLE ROAD VERTICAL SIGHT DISTANCE

PROJECT: Q:\POPK_50168509\CAD\Civil\ODP\dgn\09-POPK_ODP-DoyleSiteDistance-02.dgn
 SHEET NO.

C09



REQUIRED SIGHT DISTANCE PER FDOT DESIGN MANUAL

△ SHEET ADDED