



710 S. Main St

RETAIL & OFFICE SPACE FOR LEASE

710 South Main St.
Fort Worth, TX 76104

 Transwestern

About the Property

710 South Main St, Fort Worth, TX 76104 is a centrally located property in the Near Southside district, offering convenient access to downtown, medical facilities, and major transportation routes. This address sits in a vibrant, growing area known for a mix of commercial, residential, and cultural developments, making it appealing for both business and investment opportunities.

PROPERTY INFORMATION

- Prime location: Situated in the historic South Main District, close to vibrant restaurants and bars
- Two parking lots with 40 total parking spaces
- Ideal location on South Main with multiple restaurants just steps a way
- Beautiful interior finishes creating a modern/creative move-in ready office space
- End cap retail space ready for immediate occupancy



Kirk Kelly

Principal
817-259-3533
Kirk.Kelly@transwestern.com

Blake Grable

Senior Associate
817-259-3502
Blake.Grable@transwestern.com

 Transwestern

710 South Main St.
Fort Worth, TX 76104

Lease Floor Plan

Multiple Suites • 4,200 SF & 3,400 SF Available



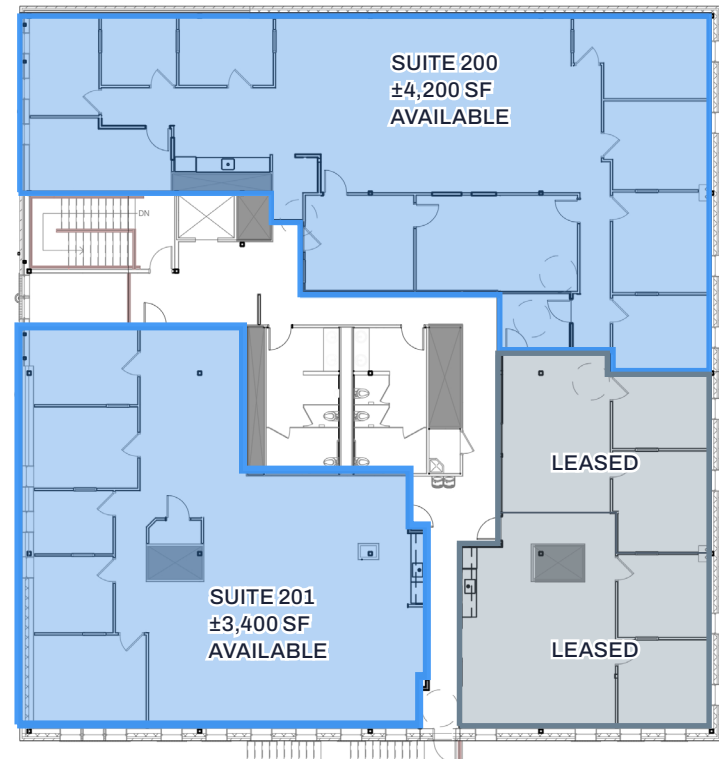
Suite # 200 : ± 4,200 SF

Suite # 201 : ± 3,400 SF

Pricing : \$28.00/SF + NNN

Parking : 3/1,000 Parking

Both Suites Available Now



Kirk Kelly

Principal
817-259-3533
Kirk.Kelly@transwestern.com

Blake Grable

Senior Associate
817-259-3502
Blake.Grable@transwestern.com

710 South Main St.
Fort Worth, TX 76104

Retail Floor Plan

2nd Generation Bar • 3,500 SF Available



± 3,500 SF Available

Roll up garage door

Pricing : \$28.00/SF + NNN (Est. \$12.18)

Tenant improvements available

Available Now

office Floor Plan



Kirk Kelly

Principal
817-259-3533
Kirk.Kelly@transwestern.com

Blake Grable

Senior Associate
817-259-3502
Blake.Grable@transwestern.com



Kirk Kelly

Principal
817-259-3533
Kirk.Kelly@transwestern.com

Blake Grable

Senior Associate
817-259-3502
Blake.Grable@transwestern.com

 Transwestern



Get in Touch

Kirk Kelly

Principal
817-259-3533
Kirk.Kelly@transwestern.com

Blake Grable

Senior Associate
817-259-3502
Blake.Grable@transwestern.com