

EXCELLENT MANUFACTURING OR WAREHOUSING FACILITY WITH HEAVY POWER

FOR LEASE

2025

Meadowvale Blvd | Unit 2

MISSISSAUGA



For more information please contact:

Corby Rolin*, SIOR
Senior Vice President
416 798 6262
corby.rolin@cbre.com

Nick Steele*
Senior Associate
416 417 9916
nick.steele@cbre.com

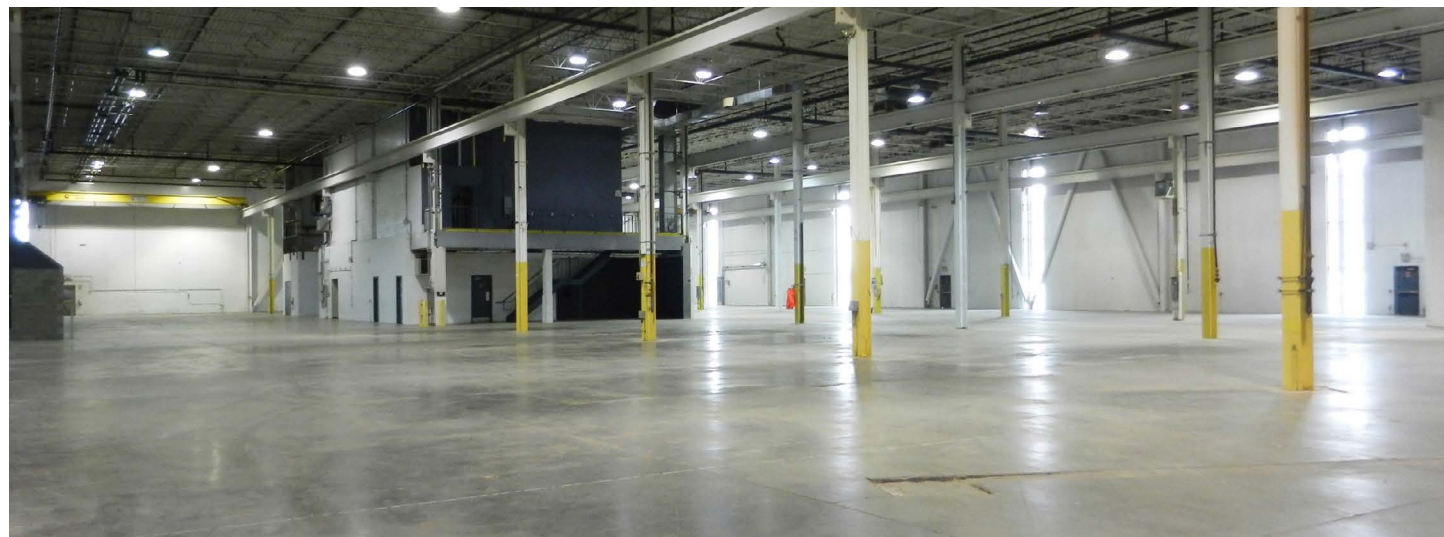
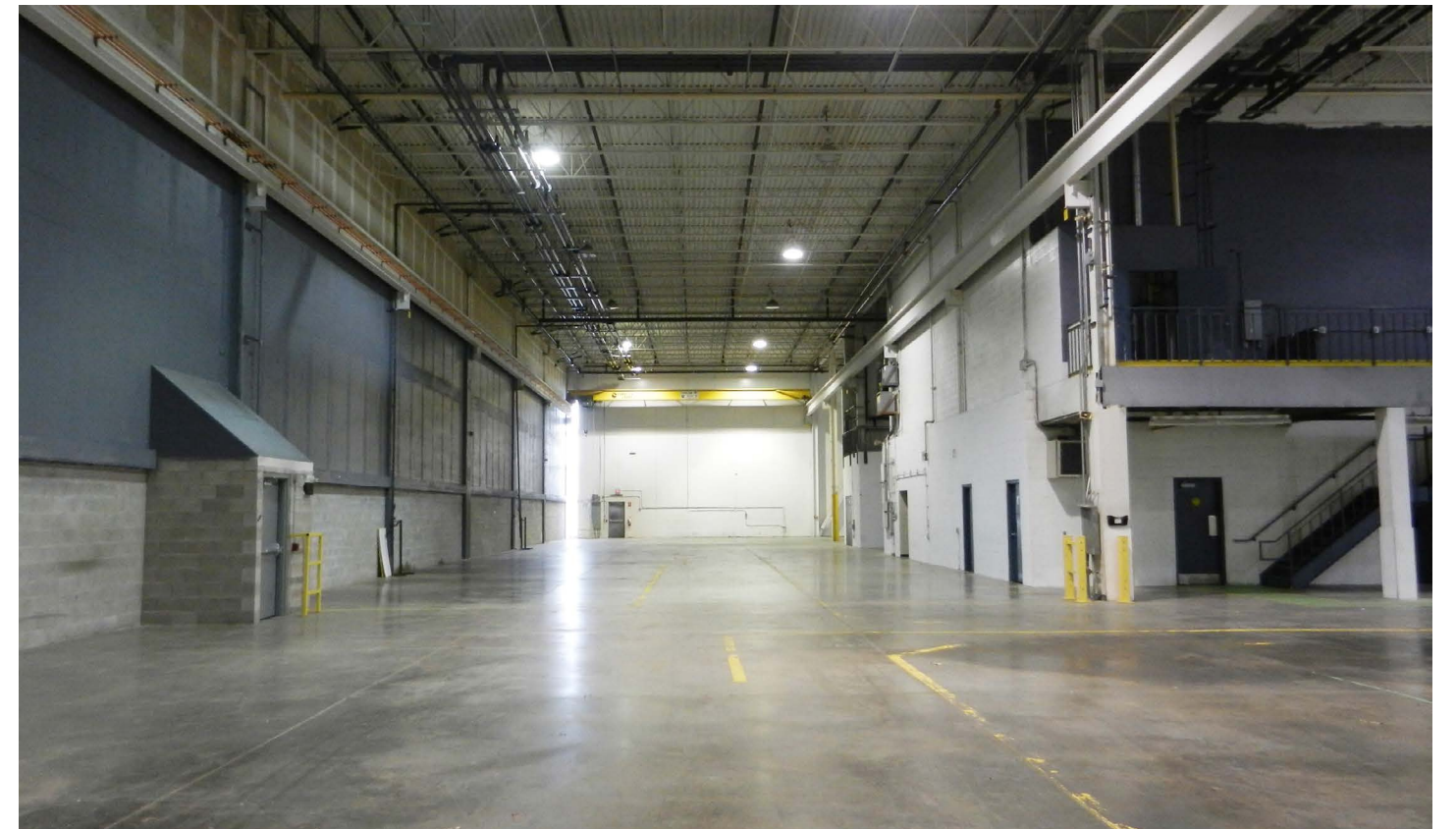
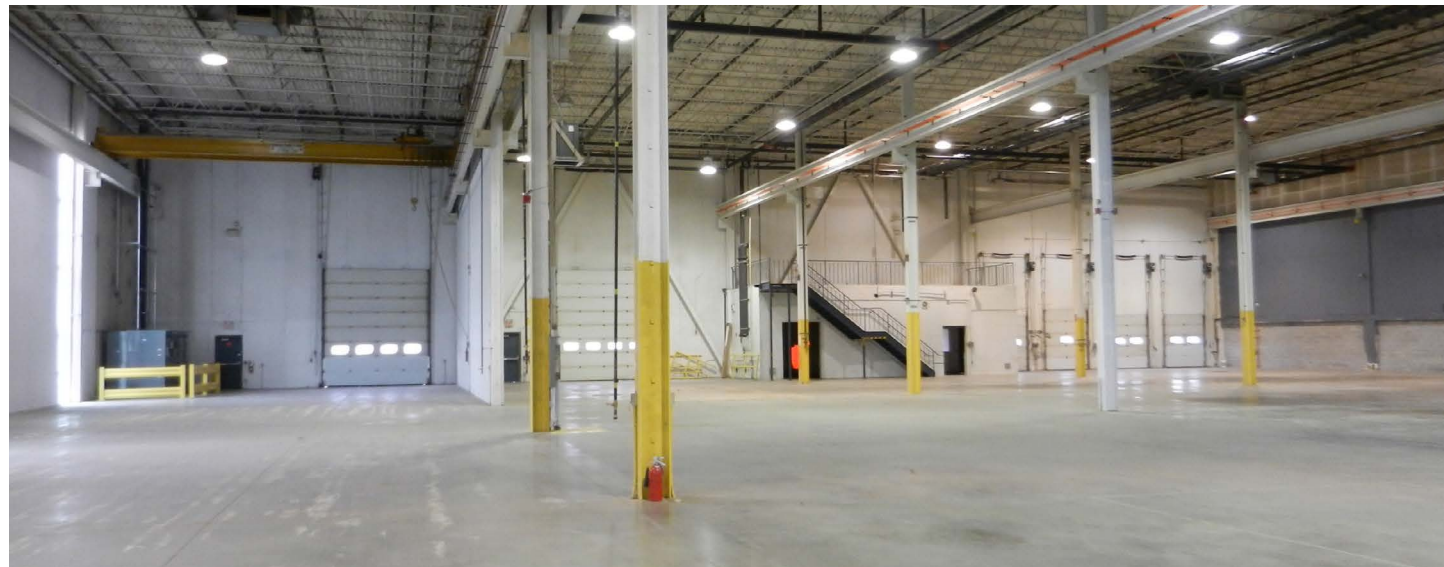
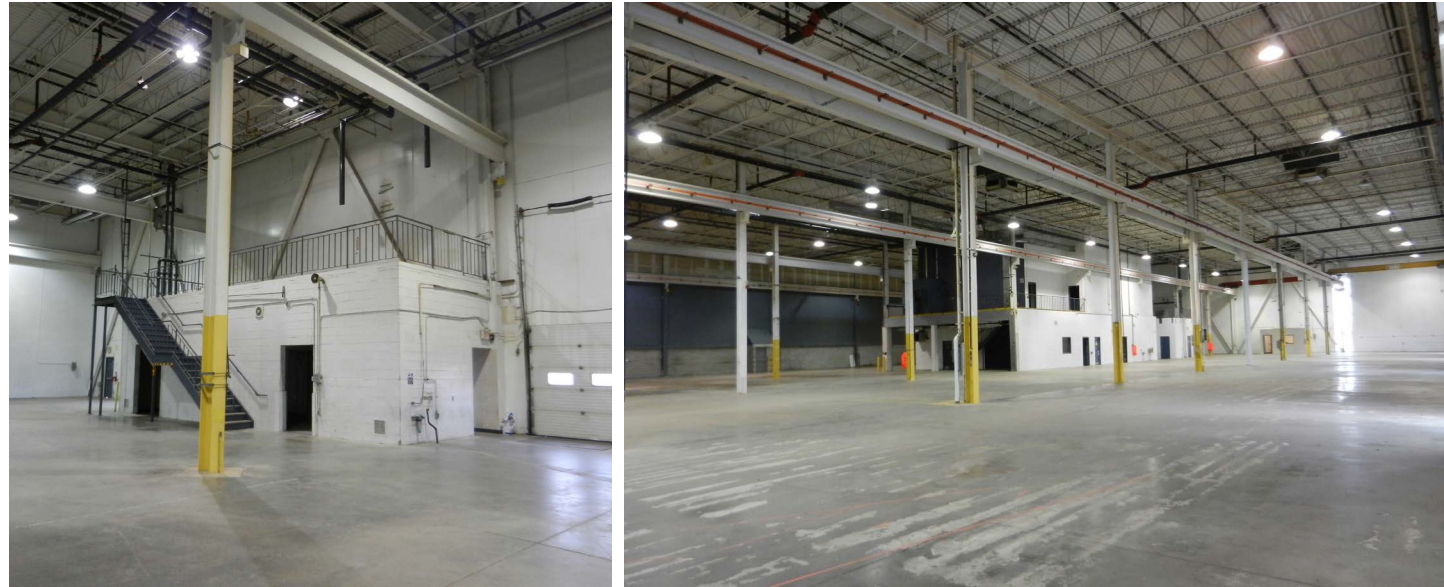
*Sales Representative

CBRE

Property Aerials



Property Pictures




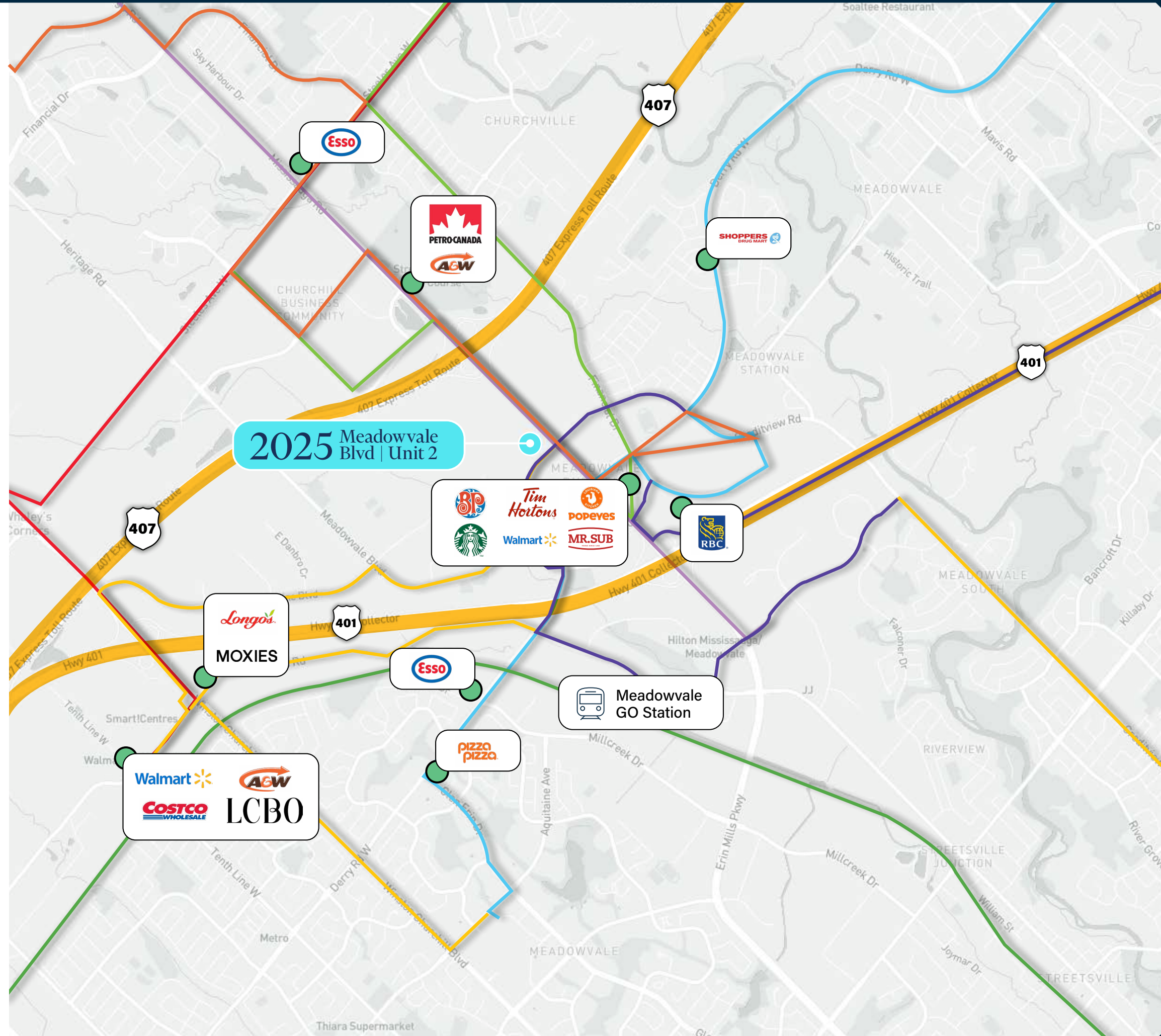
Located in the Heart of the GTA West

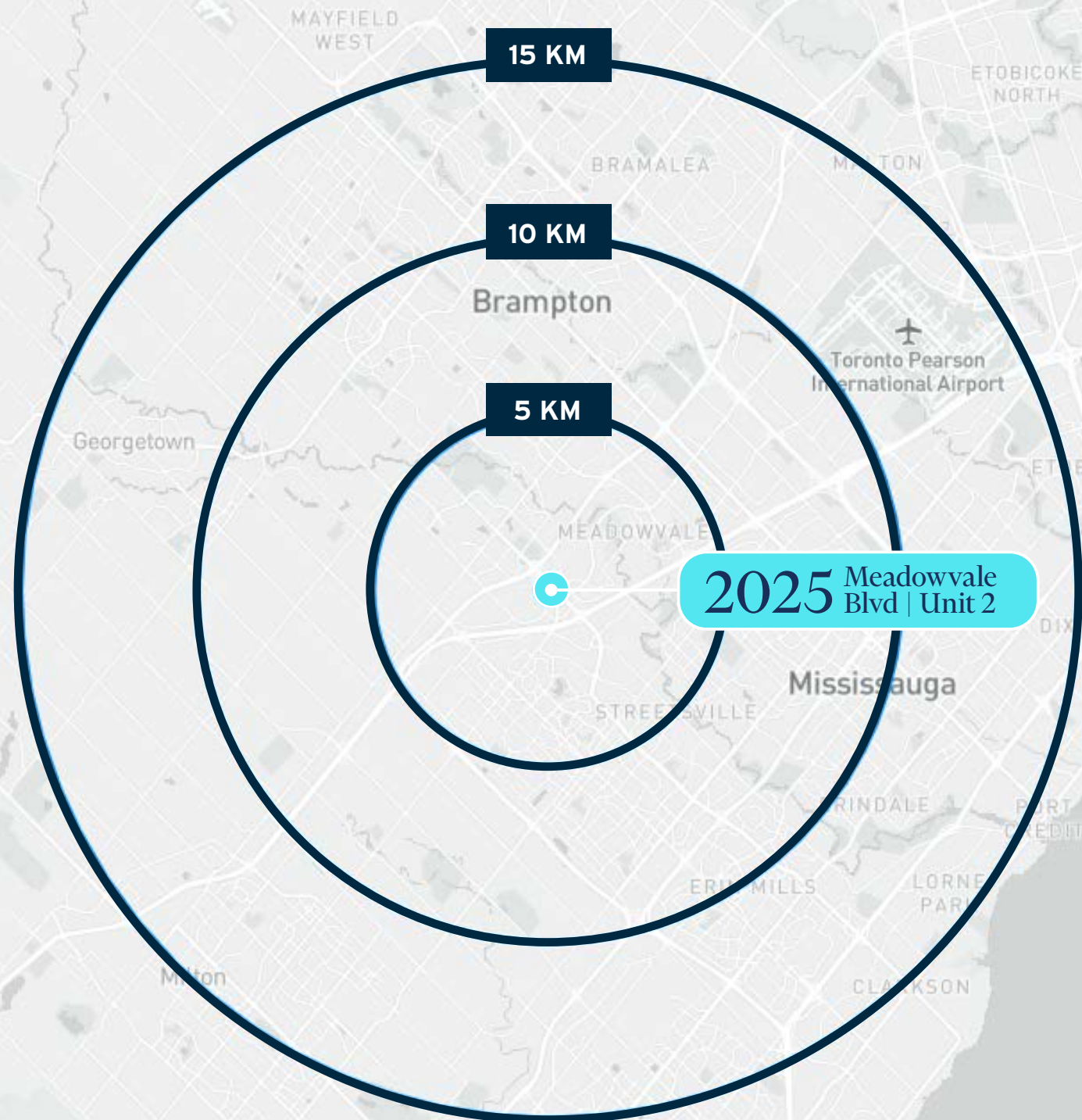
Travel Times

Highway 407	1 km	3 mins
Highway 401	1 km	3 mins
Meadowvale GO Station	3 km	6 mins
Highway 410	8.5 km	7 mins
Highway 403	10 km	10 mins
Pearson Airport	10 km	15 mins
Highway 409	10 km	15 mins
Highway 427	16.5 km	15 mins
QEW	40 km	25 mins

Transit Routes

-  Route 108 - Meadowvale Express [MiWay Transit]
-  Route 38 - Credit View [MiWay Transit]
-  Route 51 - Henford [Brampton Transit]
-  Route 60 - Mississauga Road [Brampton Transit]
-  Route 11 - Steeles [Brampton Transit]
-  Route 42 - Derry [MiWay Transit]
-  Route 58 - Financial [Brampton Transit]
-  Milton [Go Transit Line]





2025 Meadowvale Blvd | Unit 2

5 KM	
Population	197,613
Labour Force	119,770
Median Age	35.9 years

10 KM	
Population	700,208
Labour Force	413,264
Median Age	36.2 years

15 KM	
Population	1,463,638
Labour Force	853,287
Median Age	36.7 years



MISSISSAUGA DEMOGRAPHICS

Access to high quality, robust talent. Mississauga is part of the largest labour force in Canada with access to a labour pool of over 4.3 million people.



853,287

POPULATION IN LABOUR FORCE

Businesses and innovation thrive in Mississauga. The city offers unlimited possibilities of growth and development



#1

LARGEST LOGISTICS SECTOR IN THE GREATER TORONTO AREA (GTA)

765+ businesses in Food & Beverage

555+ businesses in Automotive

445+ businesses in Clean Tech

345+ businesses in Aerospace



1,463,638

TOTAL POPULATION

MISSISSAUGA IS HOME TO...

- 75+ Fortune 500 Companies and 66 Global 500 companies
- University of Toronto Mississauga (UTM), part of Canada's largest university
- 1,400 + Multinational firms
- 30% of the Greater Toronto Area's (GTA) logistics sector. Mississauga's logistics sector has grown by 30% over the past three years and is considered one of the fastest growing logistics sectors in Canada.



68%

EMPLOYMENT RATE

EXCELLENT MANUFACTURING OR WAREHOUSING FACILITY WITH HEAVY POWER

FOR LEASE

2025

Meadowvale Blvd | Unit 2

MISSISSAUGA



For more information please contact:

Corby Rolin*, SIOR
Senior Vice President
416 798 6262
corby.rolin@cbre.com

Nick Steele*
Senior Associate
416 417 9916
nick.steele@cbre.com

***Sales Representative | All Outlines Are Approximate**

CBRE Limited, Real Estate Brokerage | 5935 Airport Road, #700, Mississauga, ON L4V 1W5 | www.cbre.ca

CBRE

This disclaimer shall apply to CBRE Limited, Real Estate Brokerage, and to all other divisions of the Corporation; to include all employees and independent contractors ("CBRE"). The information set out herein, including, without limitation, any projections, images, opinions, assumptions and estimates obtained from third parties (the "Information") has not been verified by CBRE, and CBRE does not represent, warrant or guarantee the accuracy, correctness and completeness of the Information. CBRE does not accept or assume any responsibility or liability, direct or consequential, for the Information or the recipient's reliance upon the Information. The recipient of the Information should take such steps as the recipient may deem necessary to verify the Information prior to placing any reliance upon the Information. The Information may change and any property described in the Information may be withdrawn from the market at any time without notice or obligation to the recipient from CBRE. CBRE and the CBRE logo are the service marks of CBRE Limited and/or its affiliated or related companies in other countries. All other marks displayed on this document are the property of their respective owners. All Rights Reserved. Mapping Sources: Canadian Mapping Services canadamapping@cbre.com; DMTI Spatial, Environics Analytics, Microsoft Bing, Google Earth