



COLONY
COMMERCIAL

**FOR
LEASE**



**2,400 SF FLEX
SPACE AVAILABLE**



PROPERTY DETAILS

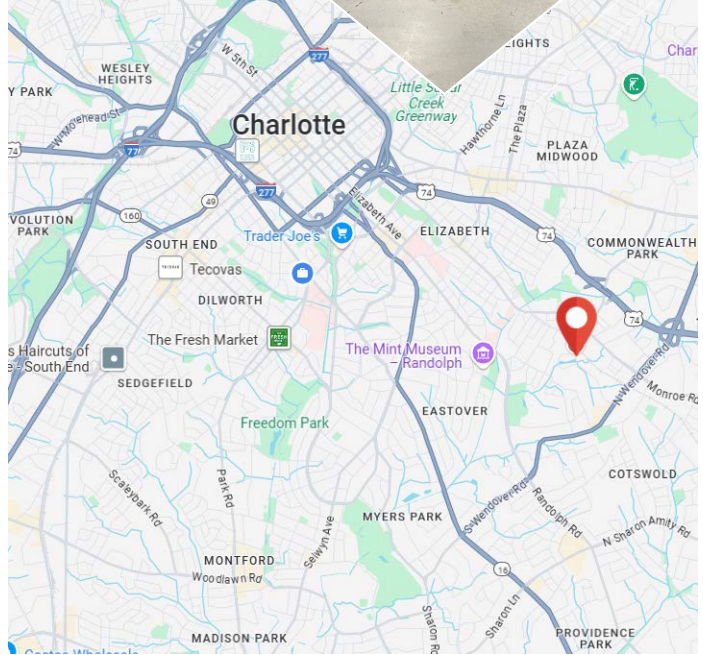
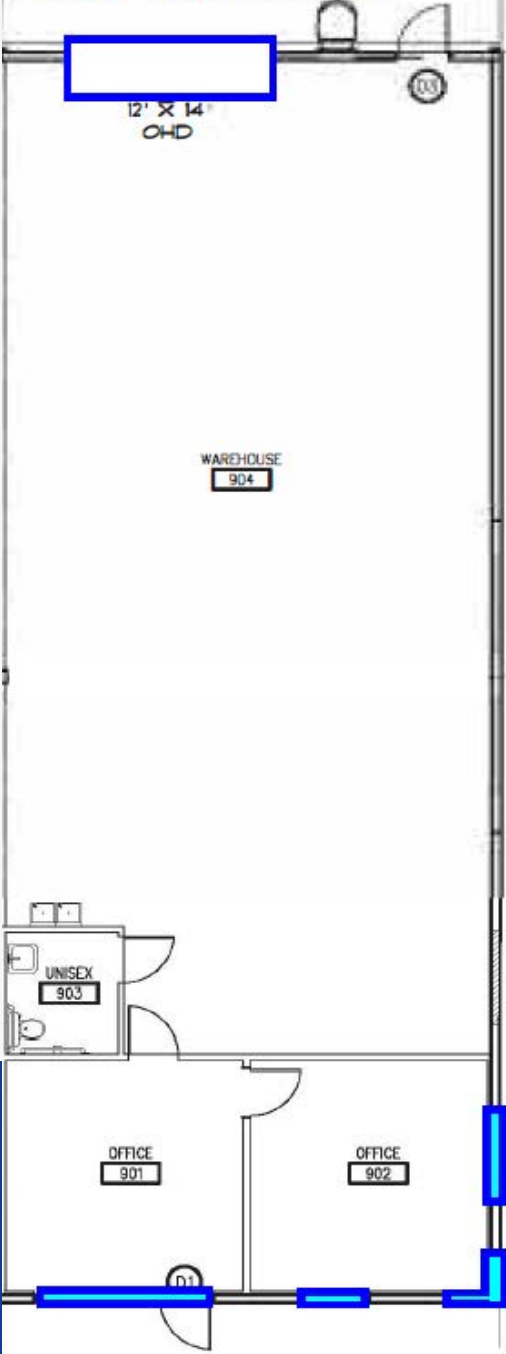
- *3605 Latrobe Dr. Charlotte, NC 28211*
- *+/-2,400 SF*
- *+/-490 SF Office*
- *+/-1,900 SF of Warehouse with 16' ceiling heights*
- *MI-1 Zoning*
- *12'x14' Drive in Door*
- *Located in central Charlotte near downtown, US-74, I-77 and I-85 and popular Southeast Charlotte neighborhoods.*

- 10 minutes to downtown
- 10 minutes to I-277
- 15 minutes to I-85
- 13 miles to Airport



SPACE PLAN

Grade Level Drive In



CONTACT US

- William Maxwell
- (704) 575 - 1130
- wmaxwell@colony-commercial.com

