



DEMOGRAPHIC HIGHLIGHTS

	1 Mile	3 Mile	5 Mile
Population	12,077	105,121	307,011
Number of Households	4,365	38,479	108,814
Average Income	\$150,531	\$123,243	\$115,888

PROPERTY SIZE

117,305 SQF

LAT/LONG

30.01292 | -95.53705

TRAFFIC COUNTS

Louetta: 37,000 | Champion Forest Dr.: 15,000

MAJOR TENANTS



Bryson King

Leasing Agent
(832) 677-6847
bking@gfinvestments.com

Audrey Curran

Property Manager
(281) 840-5363
acurran@gfinvestments.com

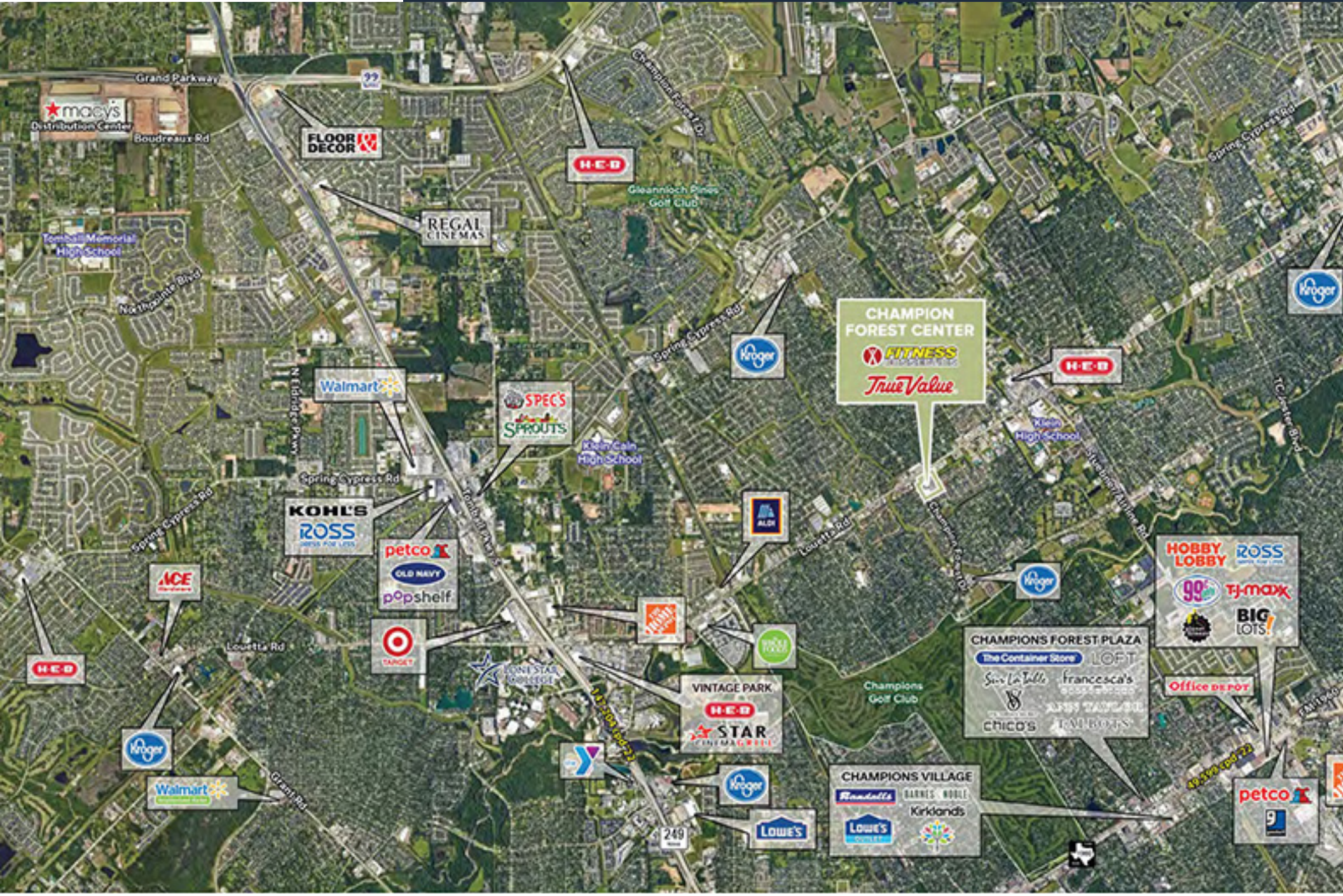
Louetta Road



Unit	Tenant	SQF
16616	Fitness Connection	54,350
16630	Available	1,680
16634	Astro Liquor	2,107
16638	Available	1,875
16640	Available	2,107
16642	Later Day Books and Gifts	3,750
16646	The Farm	1,625
16650	Available	2,655
16668	Nonprofit Educational Facility	4,380
16674	Champions Cafe	800
16676	undefined	1,000
16678	State Farm Insurance	1,620
16680	Champion Hair Salon	1,200
16682	Supplement Store	900
16686	Laurel School of Massage	2,700
16694	Available	3,094
16712	James Crouch	976
16714	Available	2,000
16716	Available	1,947
16718	SportClip	1,440
16720	Champion True Value	10,355
16730	Liv Med Spa	3,580
16734	Oriental Garden	3,540
16736	Dr. Nguyen	2,272
16740	Painting with a Twist	2,575
16741	Angel Eyelash	1,077
16744	Marco's Pizza	1,700

This site plan is presented solely for the purpose of identifying the approximate location and size of the building, and intended for use as a reference only.





CONTACT

Bryson King

Leasing Agent
(832) 677-6847
bking@gfinvestments.com

Audrey Curran

Property Manager
(281) 840-5363
acurran@gfinvestments.com

w w w . g f i n v e s t m e n t s . c o m



Scan with your smart phone
to go to our homepage