

EXCLUSIVE LISTING!

0.50 +/- Acres Residential at Fairhaven & Vegas Drive - \$275,000
1655 Fairhaven St Las Vegas, NV 89108



- ✓ 138-24-803-019
- ✓ 0.50 +/- Acres
- ✓ Zoned RS20-Single-family up to 2 units per acre
- ✓ Planned Land Use – Ranch Estate Neighborhood
- ✓ Unincorporated Clark County Jurisdiction
 - ✓ Lone Mountain Area
 - ✓ 2026 Taxes \$345.69
 - ✓ 101' frontage on Fairhaven
- ✓ Parcel is fenced, utilities nearby
 - ✓ Sidewalks, street lights
- ✓ Across from commercial areas



Mark Anthony Rua
Brokers

S.026655

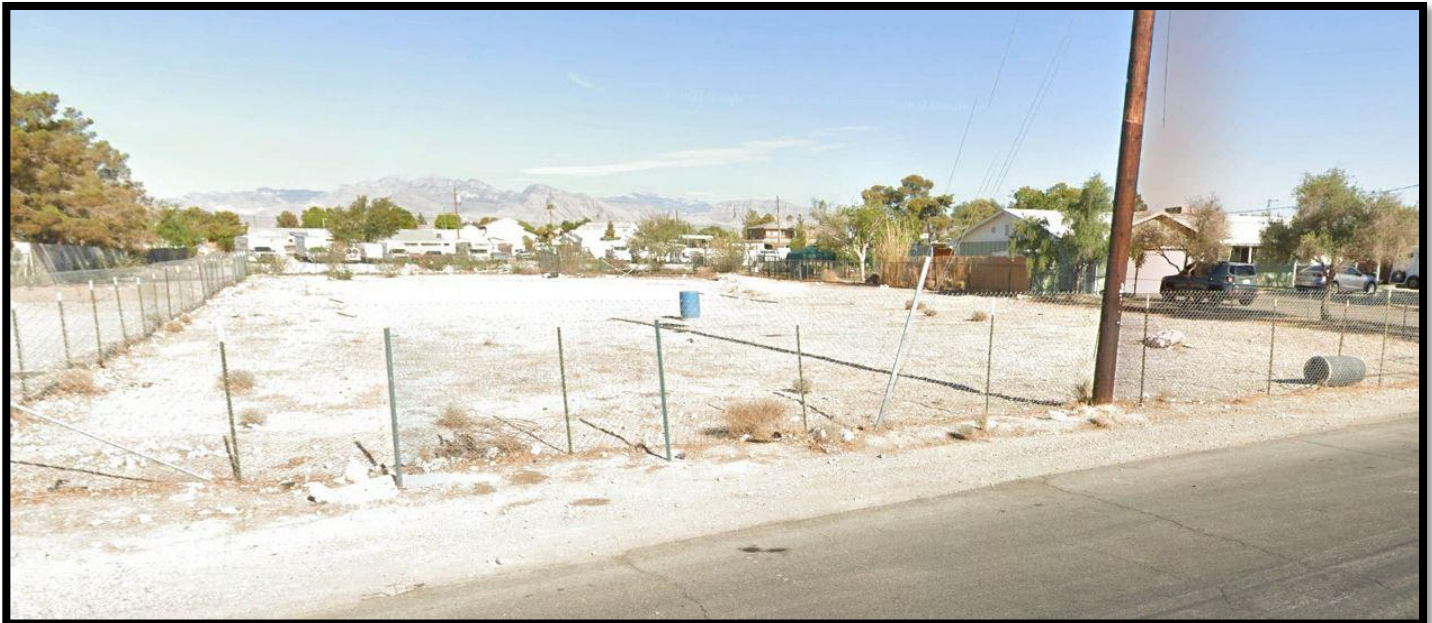
Office: 702-992-7534
Cell: 702-595-6244

2855 St Rose Parkway, Suite 100, Henderson, NV 89052
markanthonyrua@gmail.com www.mrlandlasvegas.com



EXCLUSIVE LISTING!

0.50 +/- Acres Residential at Fairhaven & Vegas Drive - \$275,000
1655 Fairhaven St Las Vegas, NV 89108



Mark Anthony Rua
Brokers

2855 St Rose Parkway, Suite 100, Henderson, NV 89052
markanthonyrua@gmail.com www.mrlandlasvegas.com

Office: 702-992-7534
Cell: 702-595-6244



The information contained herein is subject to verification and no liability for errors or omissions is assumed. The price, data, and other information are subject to change or the listing may be withdrawn without notice.

EXCLUSIVE LISTING!

0.50 +/- Acres Residential at Fairhaven & Vegas Drive - \$275,000
1655 Fairhaven St Las Vegas, NV 89108



Mark Anthony Rua
Brokers

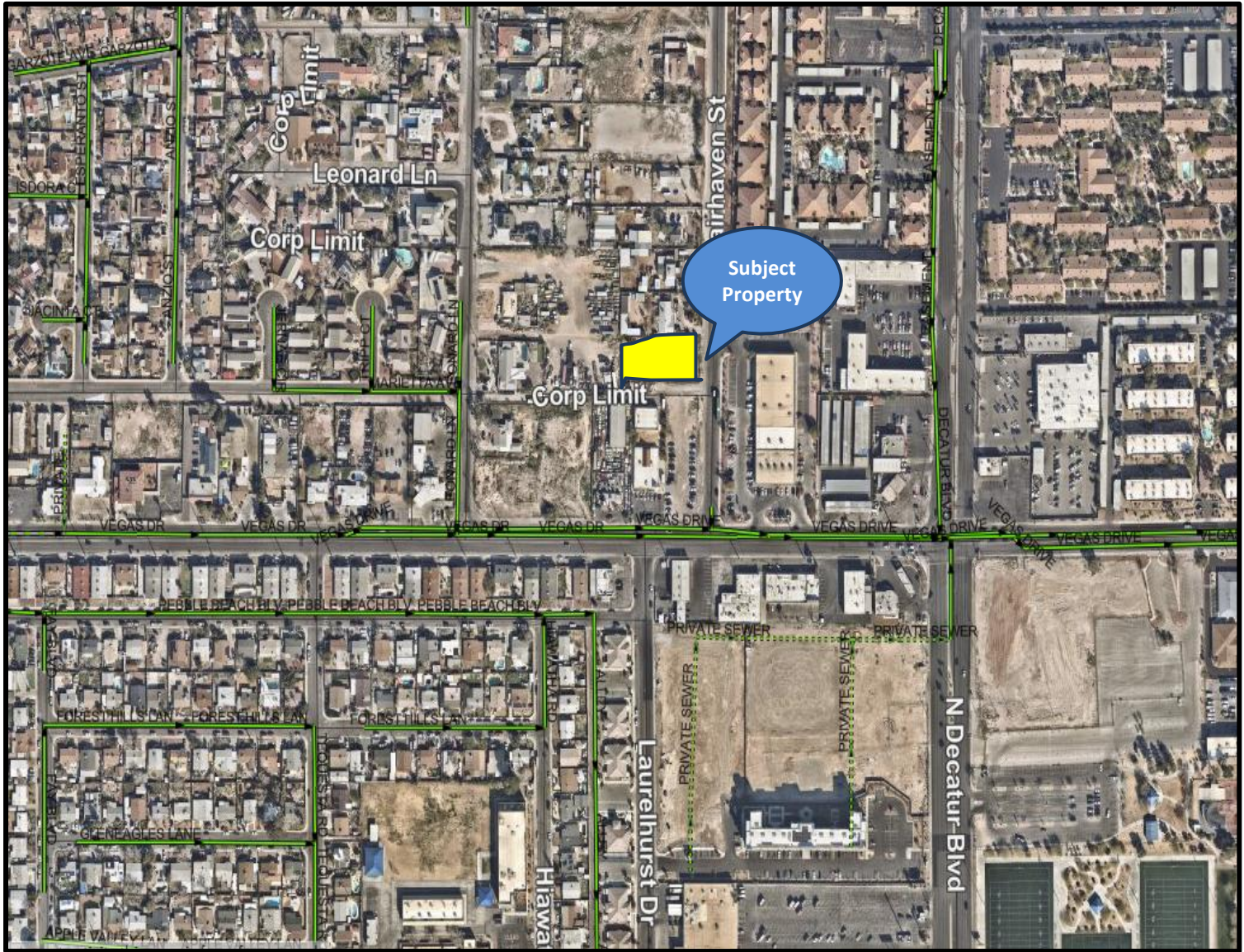
2855 St Rose Parkway, Suite 100, Henderson, NV 89052
markanthonyrua@gmail.com www.mrlandlasvegas.com

Office: 702-992-7534
Cell: 702-595-6244



The information contained herein is subject to verification and no liability for errors or omissions is assumed. The price, data, and other information are subject to change or the listing may be withdrawn without notice.

0.50 +/- ac. Residential Land
1655 Fairhaven St., Las Vegas 89108



Map of Sewer Lines
In Green

 **Mark Anthony Rua**
ERA Brokers
REAL ESTATE CONSOLIDATED

2855 St Rose Parkway, Suite 100, Henderson, NV 89052
markanthonyrua@gmail.com www.mrlandlasvegas.com

Office: 702-992-7534
Cell: 702-595-6244



The information contained herein is subject to verification and no liability for errors or omissions is assumed. The price, data, and other information are subject to change or the listing may be withdrawn without notice.

ASSESSOR'S PARCELS - CLARK COUNTY, NV.
 Briana Johnson - Assessor

138-24-8

S 2 SE 4

24

T20S R60E

126 125 124 12
 137 138 139 14
 164 163 162 16

Scale: 1" = 200'

Rev: 8/16/2019

CLARK COUNTY
 NEVADA

MAP LEGEND

PARCEL BOUNDARY
 SUB-BOUNDARY
 ROAD BOUNDARY
 ROAD EASEMENT
 MATCH / LEADER LINE
 HISTORIC SUB BOUNDARY
 HISTORIC PAID BOUNDARY
 SECTION LINE

CONDOMINIUM UNIT
 AIR SPACE PCL
 RIGHT OF WAY PCL
 SUB-SURFACE PCL

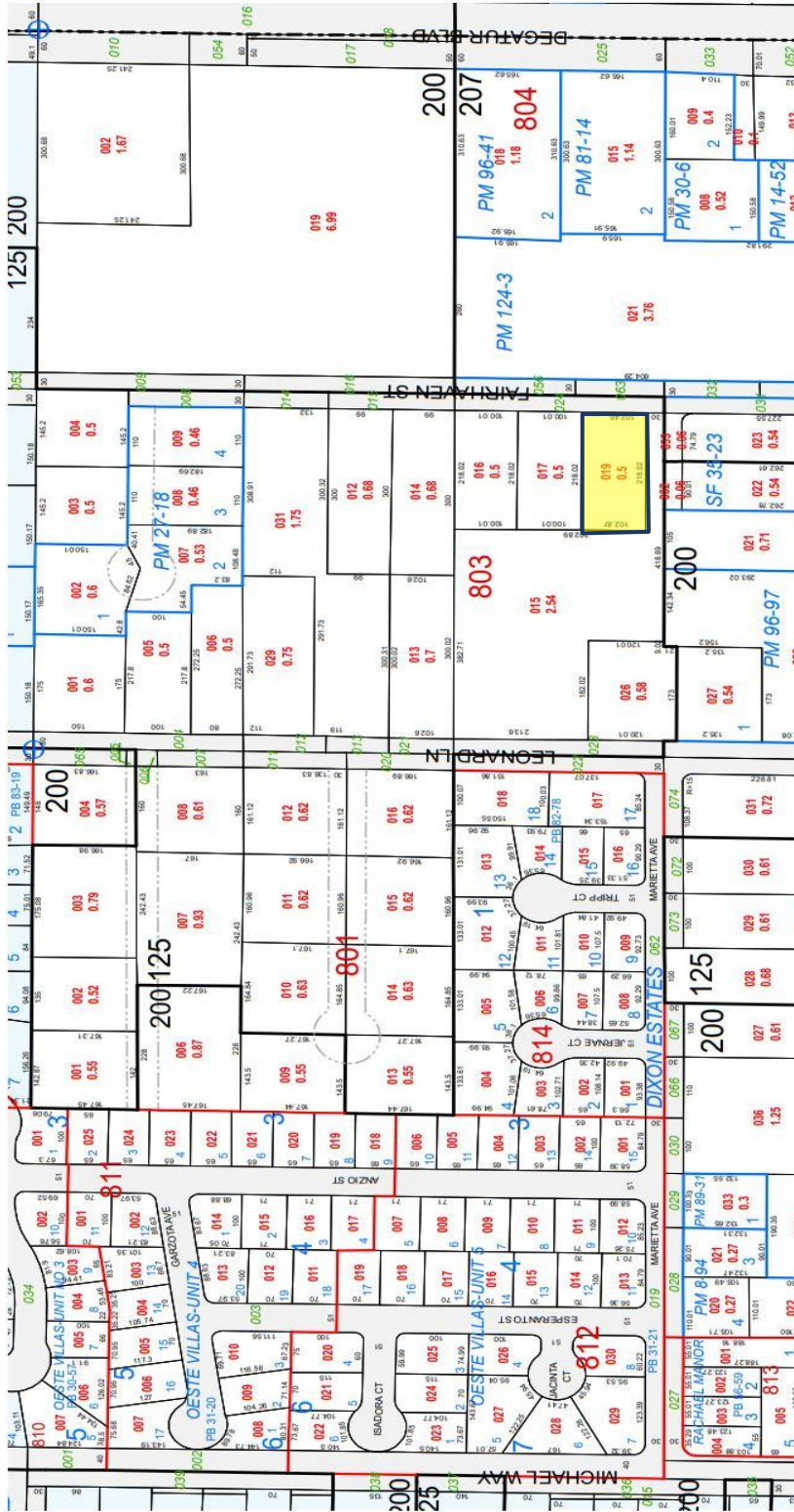
007 ROAD PARCEL NUMBER
 001 PARCEL NUMBER
 1.00 ACREAGE
 202 PARCEL SUBSEQ NUMBER
 FB 24-49 PLAT RECORDING NUMBER
 5 BLOCK NUMBER
 3 LOT NUMBER
 03.5 CONV LOT NUMBER

NOTES

This map is for assessment use only and does NOT represent a survey. No liability is assumed for the accuracy of the data delineated herein. Information on roads and other non-assessed parcels may be obtained from the Road Document Listing in the Assessor's Office.

This map is compiled from official records, including surveys and deeds, but only contains the information required for assessment. See the recorded documents for more detailed legal information.

USE THIS SCALE(FEET) WHEN MAP REDUCED FROM 11X17 ORIGINAL.



EXCLUSIVE LISTING!

0.50 +/- Acres Residential at Fairhaven & Vegas Drive
 1655 Fairhaven St Las Vegas, NV 89108