

RUTLAND ¹⁰



2010 CENTIMETER CIRCLE
AUSTIN, TX 78758


STREAM



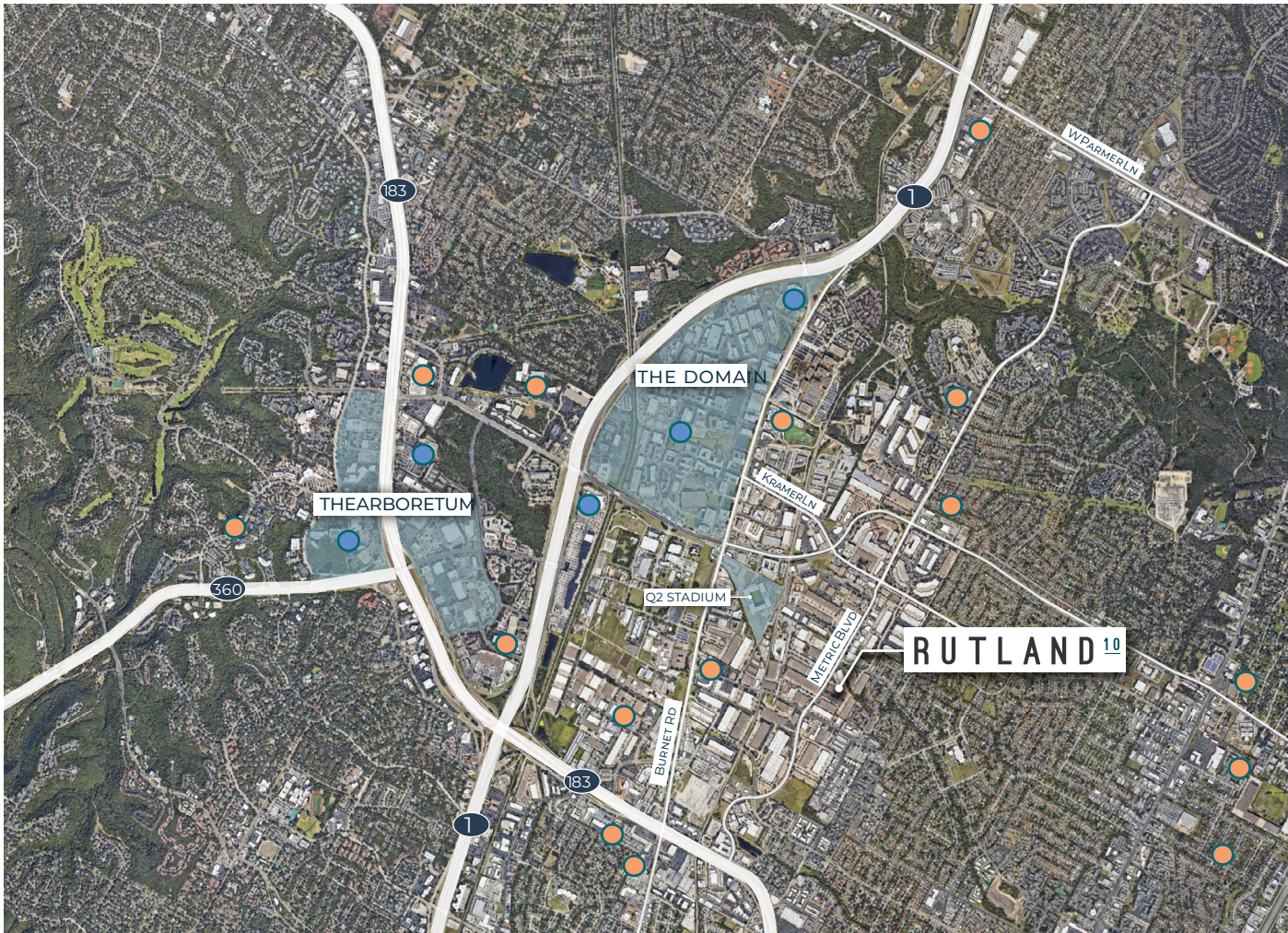


Rutland 10

Rutland 10 is a value office/flex property located on the northeast corner of Metric Blvd and Rutland Dr in the heart of Austin's Braker/Metric area. Rutland 10 has convenient access to MoPac Expy, Hwy 183 and I-35, and is located just 2 miles from The Domain and less than 5 miles from The Arboretum.

Building Highlights

- 54,000 SF
- Parking: 1.4:1,000
- Centrally Located & Minutes From The Domain and The Arboretum
- Excellent Visibility on Metric Boulevard
- Direct Access To MoPac Expwy, Hwy 183, and IH-35



BEST OF THE AREA

THE DOMAIN

The multi-phased Domain development is anchored by Neiman Marcus, Macy's, Dillard's and Dick's Sporting Goods and also offers more than 800 residential units and ample Class A office space, in addition to four on site hotels - Westin Austin at The Domain, Lone Star Court by Valencia Group, The Archer Hotel and Aloft Austin. With the center's ideal location and exceptional amenities, amazing restaurant selection, convenient parking and wifi connectivity, The Domain is the most desired place in Austin to shop, dine, and live.

THE ARBORETUM

Home to more than 40 fine shops and restaurants, the Arboretum is the perfect place to enjoy upscale shopping at places like Lamps Plus or Z Gallerie, or stock up on favorites at classics like the Gap and Barnes & Noble. In between stores, make time to sit outside and listen to the soothing sounds of fountains, or enjoy a delicious meal at one of the area eateries like The Cheesecake Factory, Five Guys Burgers and Fries or the Blue Baker.

WALNUT CREEK METROPOLITAN PARK

Walnut Creek Metropolitan Park is an expansive 293 acre park situated just north of downtown Austin, and features miles of hiking trails, an off leash dog area, a swimming pool, a playground, and sports and recreational facilities.

● RESTAURANTS

OSKAR BLUES BREWERY
ALBERTS BREWERY
AUSTIN BEERWORKS
ROARING FORK
STARBUCKS
TACODELI
NEWK'S EATERY
MODERN MARKET
SUMMERMOON COFFEE BAR
JIMMY JOHN'S
FREEBIRDS
CIRCLE BREWING COMPANY
KIEFER'S
4TH TAP BREWING
RESTAURANTS AT THE ARBORETUM
RESTAURANTS SHOPS AT THE DOMAIN

● RETAIL

COSTCO WHOLESALE
THE HOME DEPOT
WHOLE FOODS MARKET
THE SHOPS AT THE ARBORETUM
THE SHOPS AT THE DOMAIN

DRIVE TIMES

DOMAIN
2 MINUTES

ARBORETUM
5 MINUTES

CBD
15 MINUTES

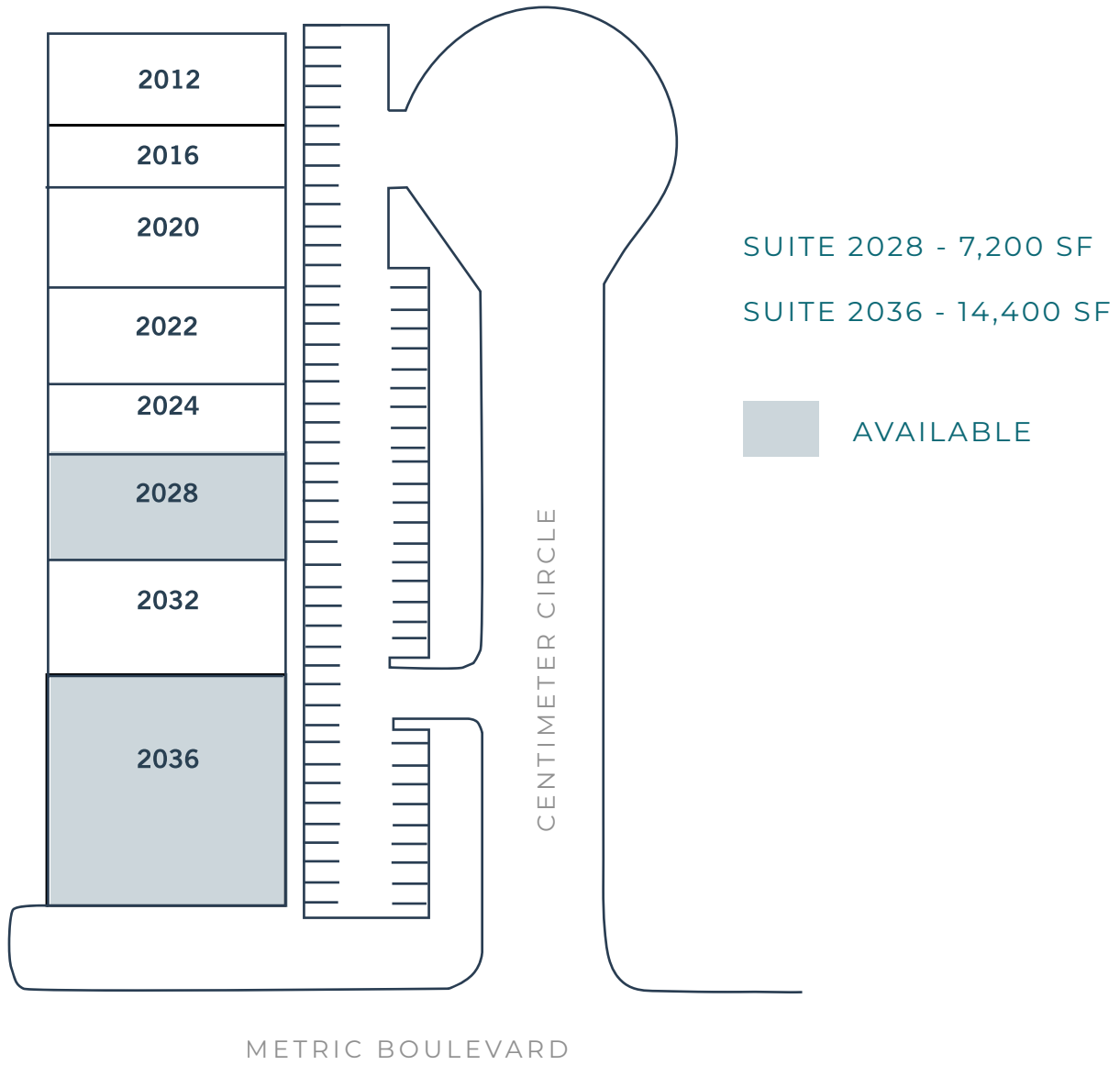
AIRPORT
20 MINUTES

THE DOMAIN AND THE ARBORETUM - RESTAURANTS

BURGER KING	TRULUCK'S
PANERA BREAD	JASON'S DELI
FIRE BOWL CAFE	ROARING FORK
TEXADELPHIA	GOLDEN LAKE
LA MADELINE	RYU OF JAPAN
SUSHI ZUSHI	MADRA'S PAVILLION
MAGGIANO'S	MCDONALD'S
GLORIA'S	TACO BELL
CALIFORNIA PIZZA KITCHEN	CULVER'S
KONA GRILL	TRUDY'S NORTH STAR
THE STEEPING ROOM	LUPE TORTILLA
CRU FOOD & WINE BAR	MASALA WOK
BLACKFINN	MIGHTY FINE BURGERS
JASPER'S	CHIPOTLE
NORTH ITALIA	FIREHOUSE SUBS
DAILY GRILL	FREEBIRD'S
FLEMING'S	NORTH BY NORTHWEST
MCCORMICK & SCHMICK'S	IRON CACTUS
FLAMING PIZZA	SHAKE SHACK
XIAN NOODLES	FLOWER CHILD
PUNCH BOWL SOCIAL	GRAND LUX CAFE

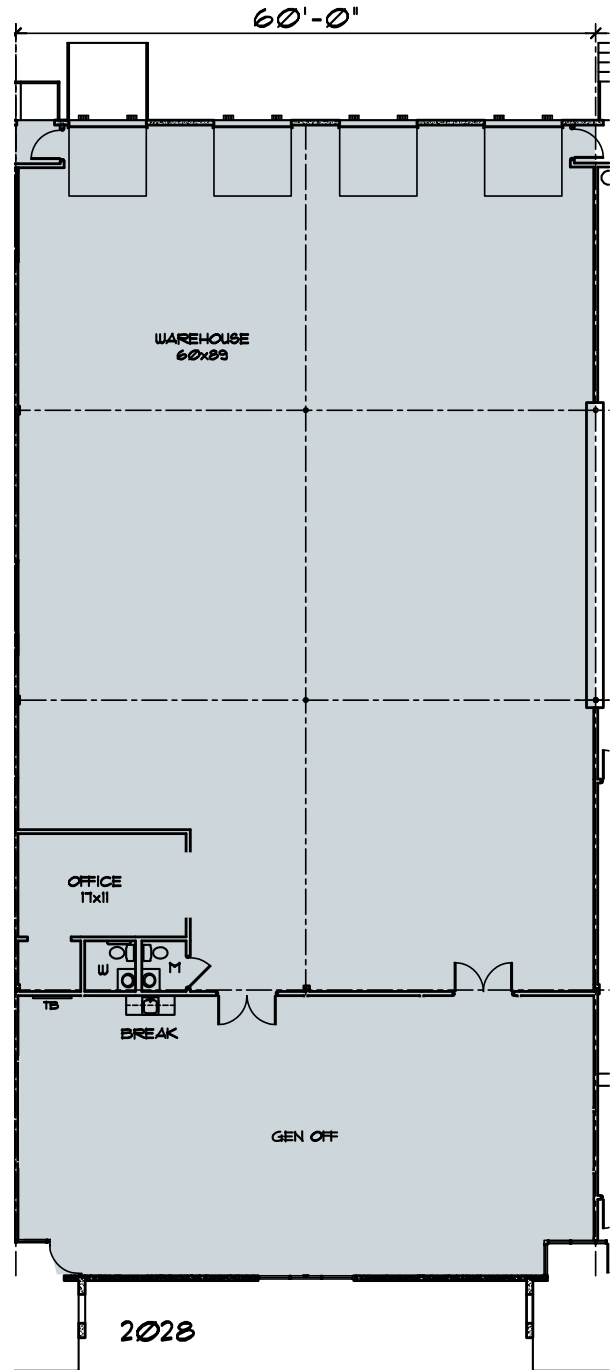
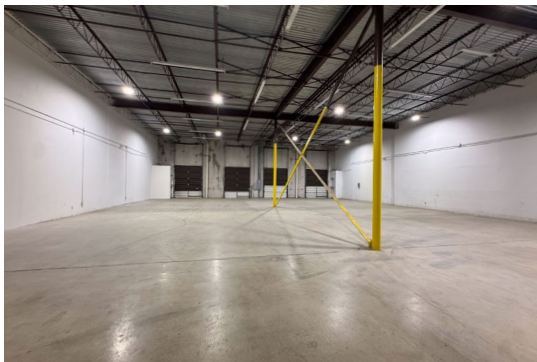
THE DOMAIN AND THE ARBORETUM - RETAIL

NEIMAN MARCUS	SUNGLASS HUT
TIFFANY & CO.	THE STEEPING ROOM
RALPH LAUREN	BANANA REPUBLIC
TORY BURCH	APPLE
BEVELLO	ANTHROPOLOGIE
ATHLETICA	VICTORIA'S SECRET
COACH	ALTAR'D STATE
COLE HAAN	SURLA TABLE
BAILEY BANKS & BIDDLE	FOREVER 21
LOUIS VUITTON	ZARA
MICHAEL KORS	LUCKY BRAND JEANS
LULULEMON ATHLETICA	ORIGINS
DIESEL	CLARK'S
PETER MILLAR	ALDO SHOES
SPLENDID	FOSSIL
BCBGMAXAZRIA	FREE PEOPLE
SPERRY'S	HATBOX
LILY PULITZER	L'OCCITANE
VINEYARD VINES	H & M
MADEWELL	MACY'S
LUXE APOTHETIQUE	ARHAUS
LOFT	MICROSOFT
J.CREW	DICK'S SPORTING GOODS
TOMMY BAHAMA	MASSAGE ENVY
TUMI	PURE PILATES AUSTIN



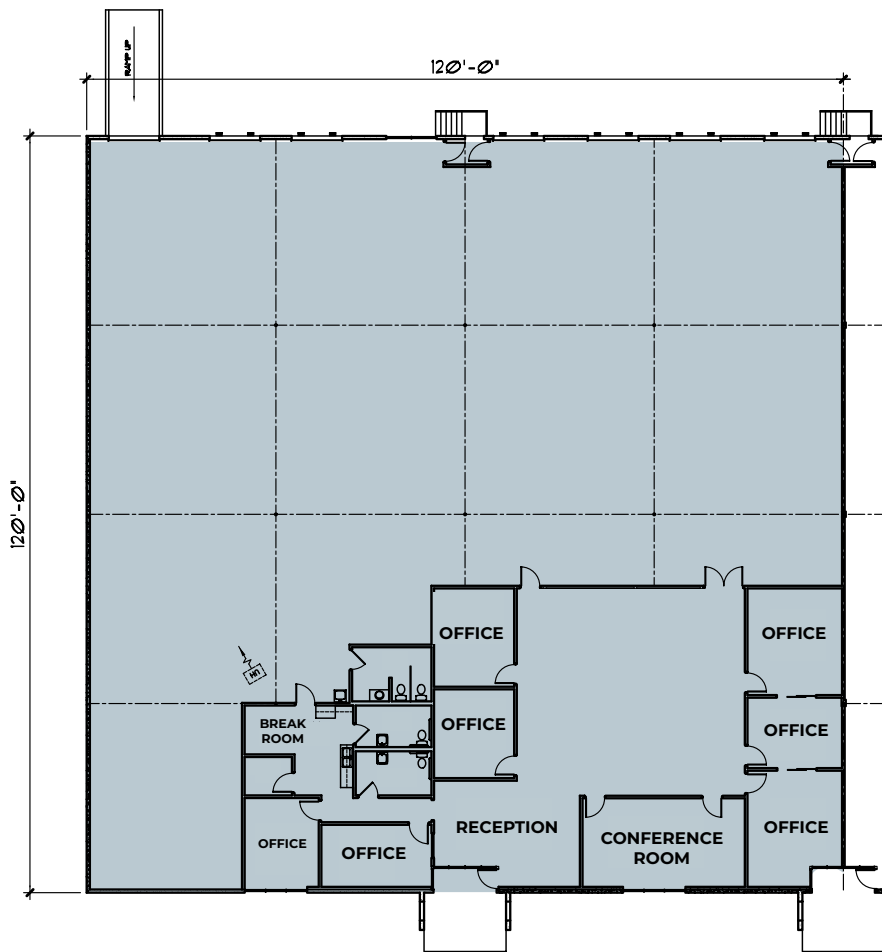
SUITE 2028 FLOORPLAN

Square Feet	7,200 SF
Loading	3 Dock-High Doors 1 Ramp
Office/Warehouse	25% Office / 75% Warehouse
Clear Height	+/-18'
Column Spacing	30' x 30'



SUITE 2036 FLOORPLAN

Square Feet	14,400 SF
Loading	6 Dock-High Doors, 1 Ramp
Office/Warehouse	30% / 70%
Clear Height	+/-18'







RUTLAND ¹⁰

TUCKER RICE
TUCKER.RICE@STREAMREALTY.COM
512.481.3057

CLAUDIA TAYLOR
CLAUDIA.TAYLOR@STREAMREALTY.COM
512.481.3021

MILLER LUHAN
MILLER.LUHAN@STREAMREALTY.COM
512.481.3053

