



Walcott Corporation

617-277-3907

Jamaica Plain Retail Space for Lease

- 684 Centre Street Jamaica Plain
- Space ranging from 4,500 - 9,200 square feet
- Onsite parking
- Excellent location for retail or restaurant use

Why 684 Centre Street

- Central shopping location
- Surrounded by national and local businesses
- Strong demographics and foot traffic
- Proven location



[Schedule a Visit](#)



617-277-3907

Josh@walcottcorp.com



Walcott Corporation

617-277-3907

Demographics

1 MILE RADIUS

 Population
34,985

Median Age **37**
Avg. HH Size **2.2**
Median HH Income **\$110,173**
Total Businesses **1,265**

3 MILE RADIUS

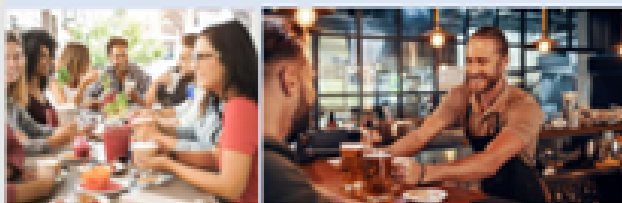
 Population
435,646

Median Age **32**
Avg. HH Size **2.3**
Median HH Income **\$72,913**
Total Businesses **13,919**

5 MILE RADIUS

 Population
888,385

Median Age **32**
Avg. HH Size **2.2**
Median HH Income **\$96,473**
Total Businesses **45,029**



Total SF Available

9,186 SF

Basement level

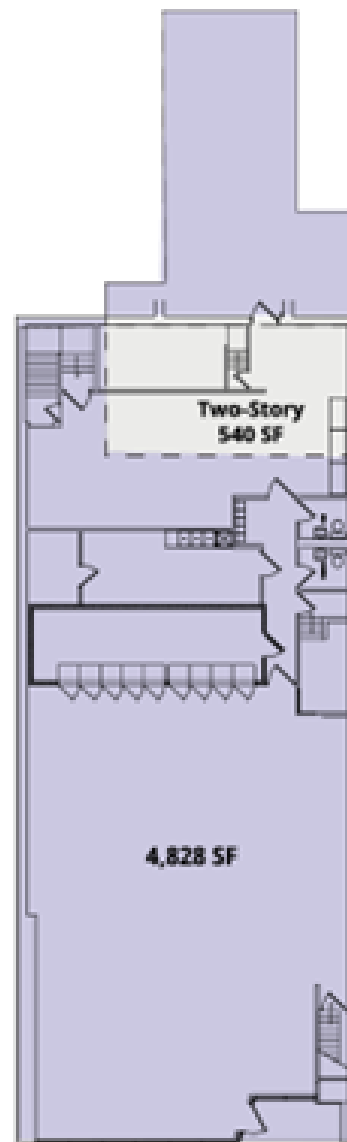
(not shown)

3,818 SF

Ground level

+ 2nd floor office space

5,368 SF



CENTRE STREET



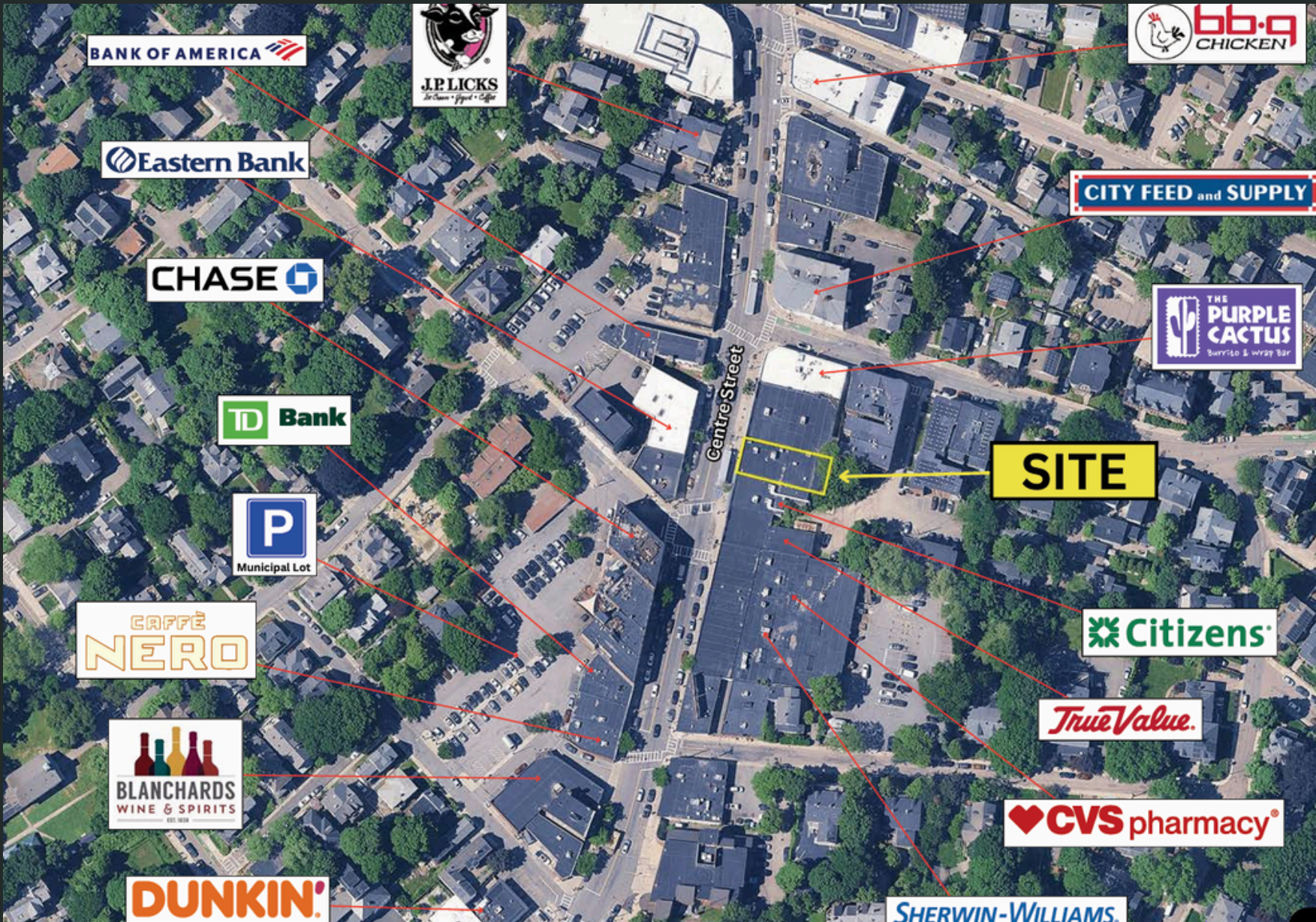
Walcott Corporation

617-277-3907



Walcott Corporation

617-277-3907



Walcott Corporation

617-277-3907