

# GALLERIA NORTH TOWER I

13737 Noel Road  
Dallas, TX 75240

## Office For Sublease

17,371 SF



Leasing Information:  
214.461.2419

**Christopher Burton**   **Rhodes Baker**  
214.461.2419   214.461.2331  
cburton@lpc.com   rbaker@lpc.com

# Lincoln

Lincoln Property Company  
8140 Walnut Hill Lane  
Suite 700  
Dallas, Texas 75231

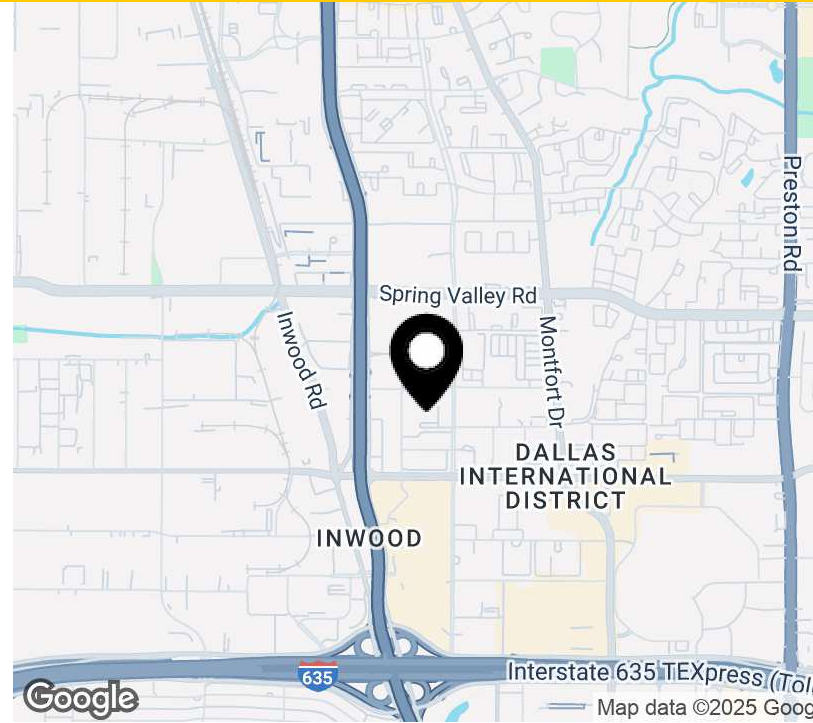
[www.lpc.com](http://www.lpc.com)

# GALLERIA NORTH TOWER I

Office For Sublease

17,371 SF

13737 Noel Road | Dallas, TX 75240



## Sublease Highlights

- Plug and Play Sublease
- Suite 1000 - 17,371 SF
- Expiration Date: June 30, 2027
- Furniture Available
- Elevator Exposure

## Availabilities

Suite 1000

## SF

17,371 SF

## Lease Rate

Negotiable

## Date Available

Now

## Building Highlights

- 379,518 SF
- Class A
- 16-story office building
- 24,000 RSF average floor plate
- Conference center
- Fitness center
- Highly visible location along Dallas Tollway
- Adjacent to Galleria mall and 200 shops & restaurants

**Christopher Burton**   **Rhodes Baker**

214.461.2419  
cburton@lpc.com

214.461.2331  
rbaker@lpc.com

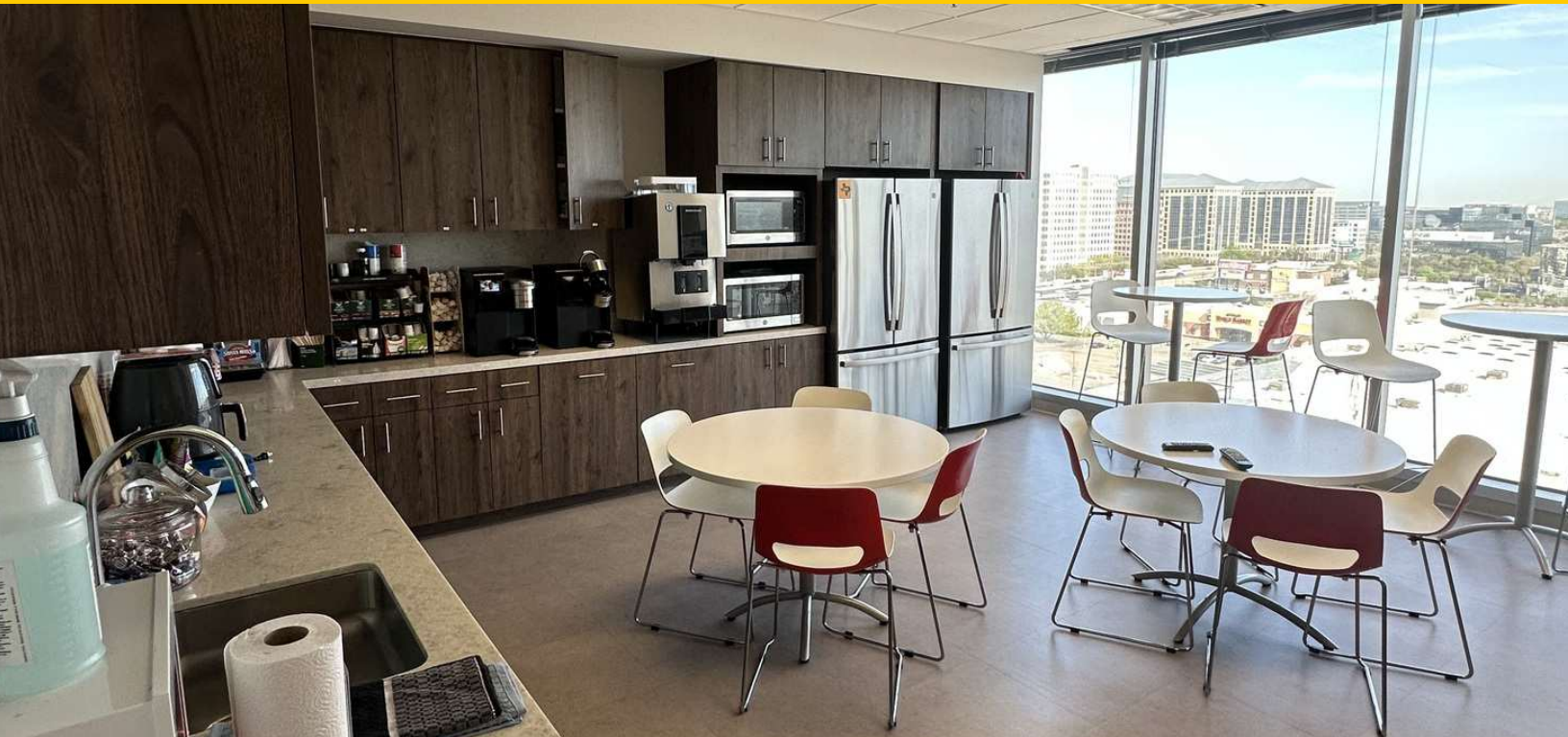
**Lincoln**

# GALLERIA NORTH TOWER I

13737 Noel Road | Dallas, TX 75240

Additional Photos

17,371 SF



**Christopher Burton**   **Rhodes Baker**

214.461.2419  
cburton@lpc.com

214.461.2331  
rbaker@lpc.com

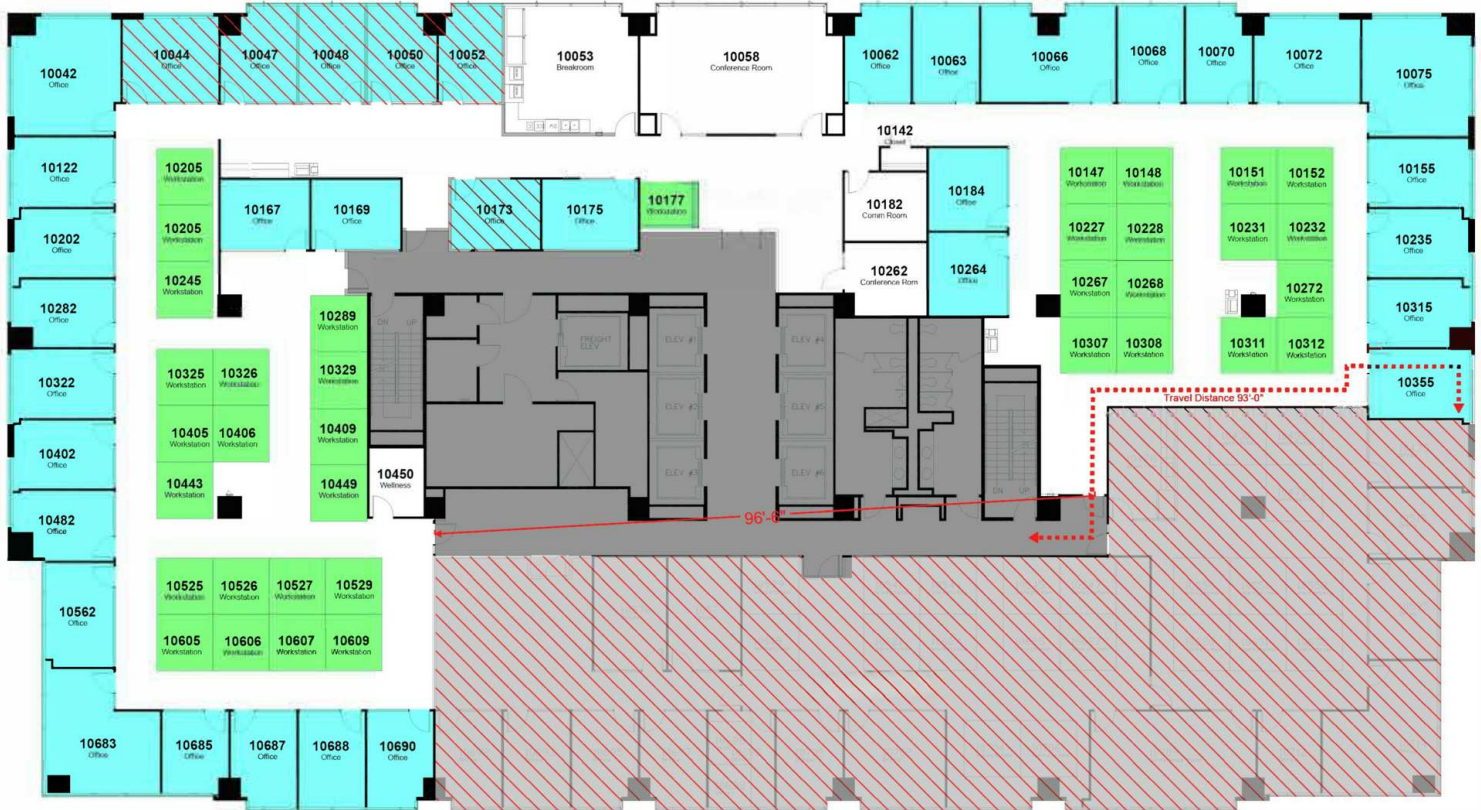
**Lincoln**

# GALLERIA NORTH TOWER I

13737 Noel Road | Dallas, TX 75240

Suite 1000

17,371 SF



## Suite

Suite 1000

## Size

17,371 SF

## Lease Rate

Negotiable

**Christopher Burton**   **Rhodes Baker**

214.461.2419  
cburton@lpc.com

214.461.2331  
rbaker@lpc.com

**Lincoln**



# GALLERIA NORTH TOWER I

13737 Noel Road  
Dallas, TX 75240

Leasing Information:  
214.461.2419

**Christopher  
Burton**  
214.461.2419  
cburton@lpc.com

**Rhodes Baker**  
214.461.2331  
rbaker@lpc.com

## Lincoln

Lincoln Property Company  
8140 Walnut Hill Lane Suite 700 Dallas, Texas  
75231

[www.lpc.com](http://www.lpc.com)