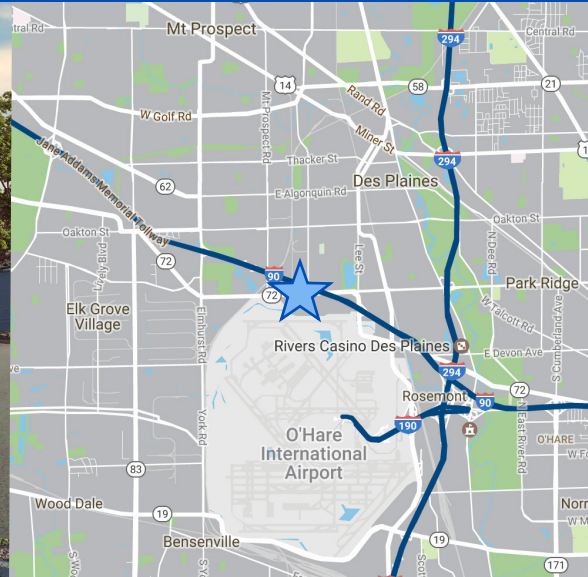


For Lease 10,332 Square Feet 500 E. Touhy Ave

Unit C - Des Plaines, IL



About This Property

- Available Space: 10,332 SF
- Office: \pm 1000 SF
- Building Size: 67,835 SF
- Land Area: 3.19 acres
- Ceiling Height: 17' clear
- Loading: 3 Common Docks, 1 Drive-in Door
- Sprinkler System: Wet
- Parking: Ratio of 1/1,000 SF
- Year Built: 1975
- Electrical Service: 1-200Amp 120/208 volt panel
2-100amp 120/208 volt panels
- Prominent visibility with daily traffic count 31,100 cars per day
- Great accessibility via Touhy Ave
- Close proximity to I-90 & I-294
- Ability to expand into Unit A for additional 8,337 SF
- Estimated Real Estate Taxes: \$3.92/SF
- Estimated CAM: \$2.24/SF
- Rental Rate: Subject to Offer

CONTACT

Daniel Wagener SIOR, CCIM

847 816 2621

dwagener@wagenerequities.com

Wagener Equities Commercial Real Estate Services, Inc.

1840 Industrial Drive, Suite 230

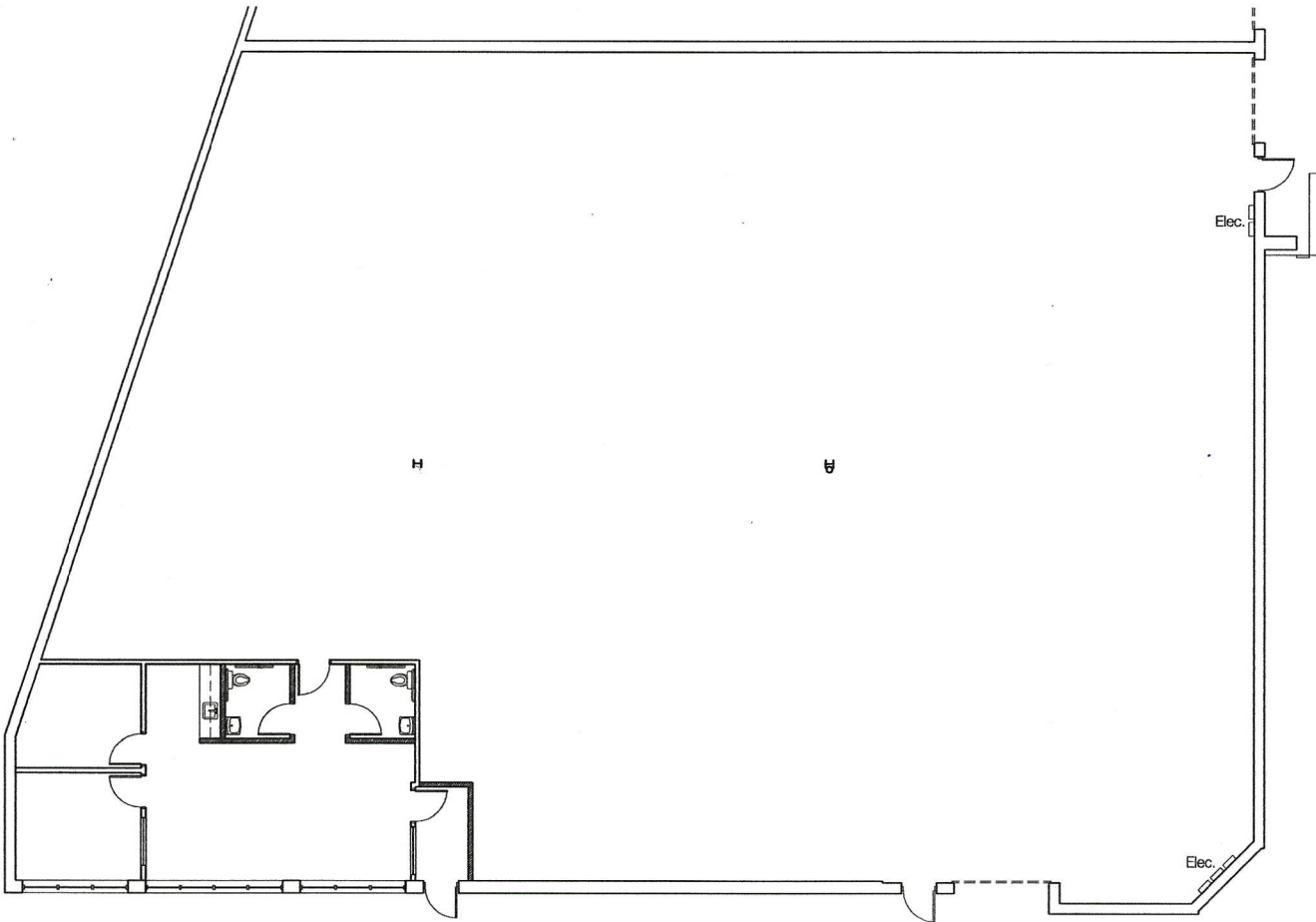
Libertyville, Illinois 60048-9467

Telephone: 847.816.1840

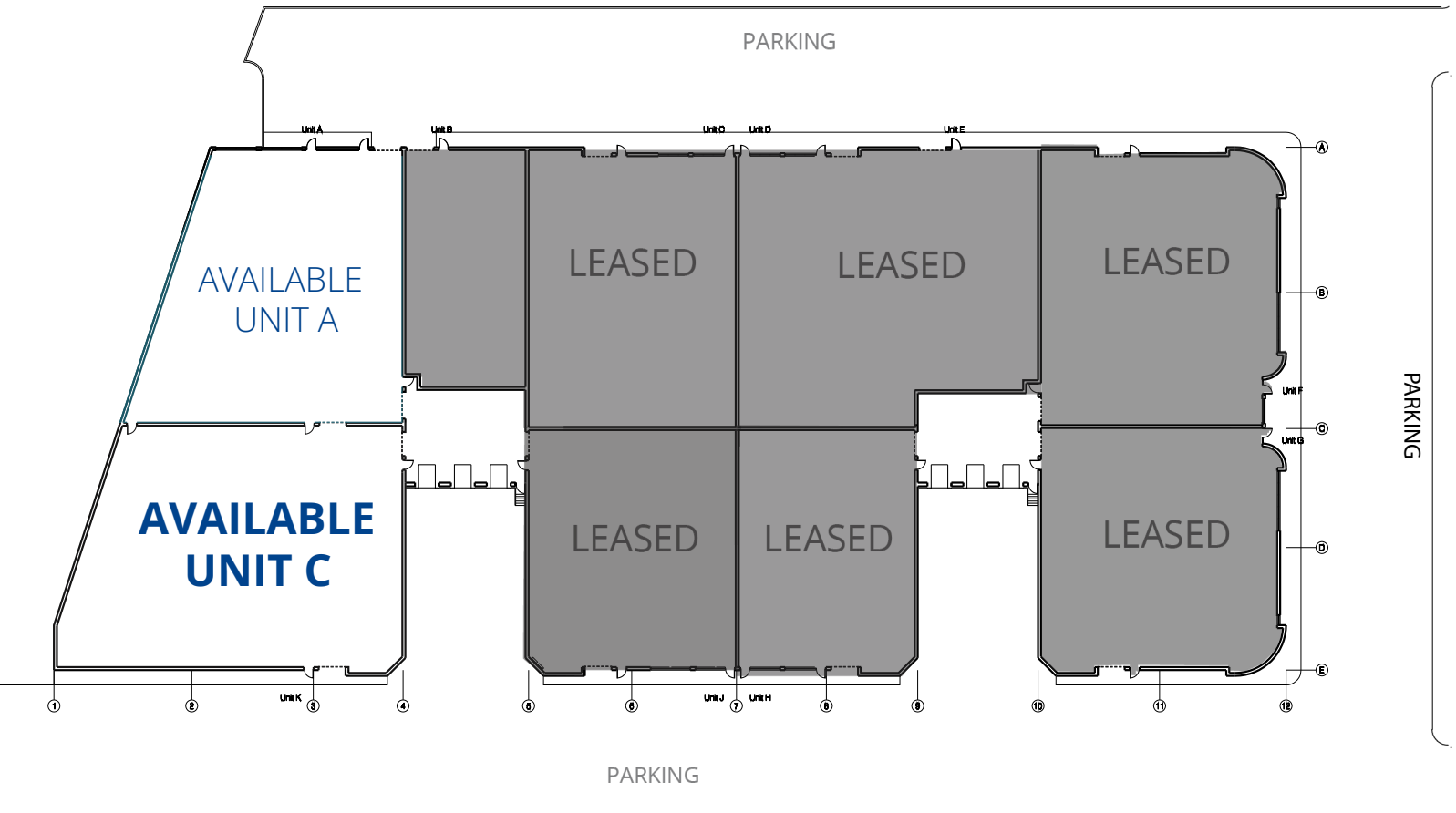
www.wecres.com

All information herein is from sources deemed reliable but not guaranteed accurate. Subject to errors, omissions, and to change of price and terms, prior sale or lease, all without notice. In compliance with Illinois law, Wagener Equities, Inc. (Broker) hereby gives written notice of the existence of an agency relationship between Broker and the Owner of the above referenced property. The Wagener Equities, Inc. listing agent(s) represent the Owner of the above property in negotiation of price, terms, conditions, and the consummation of any lease or sale contract.

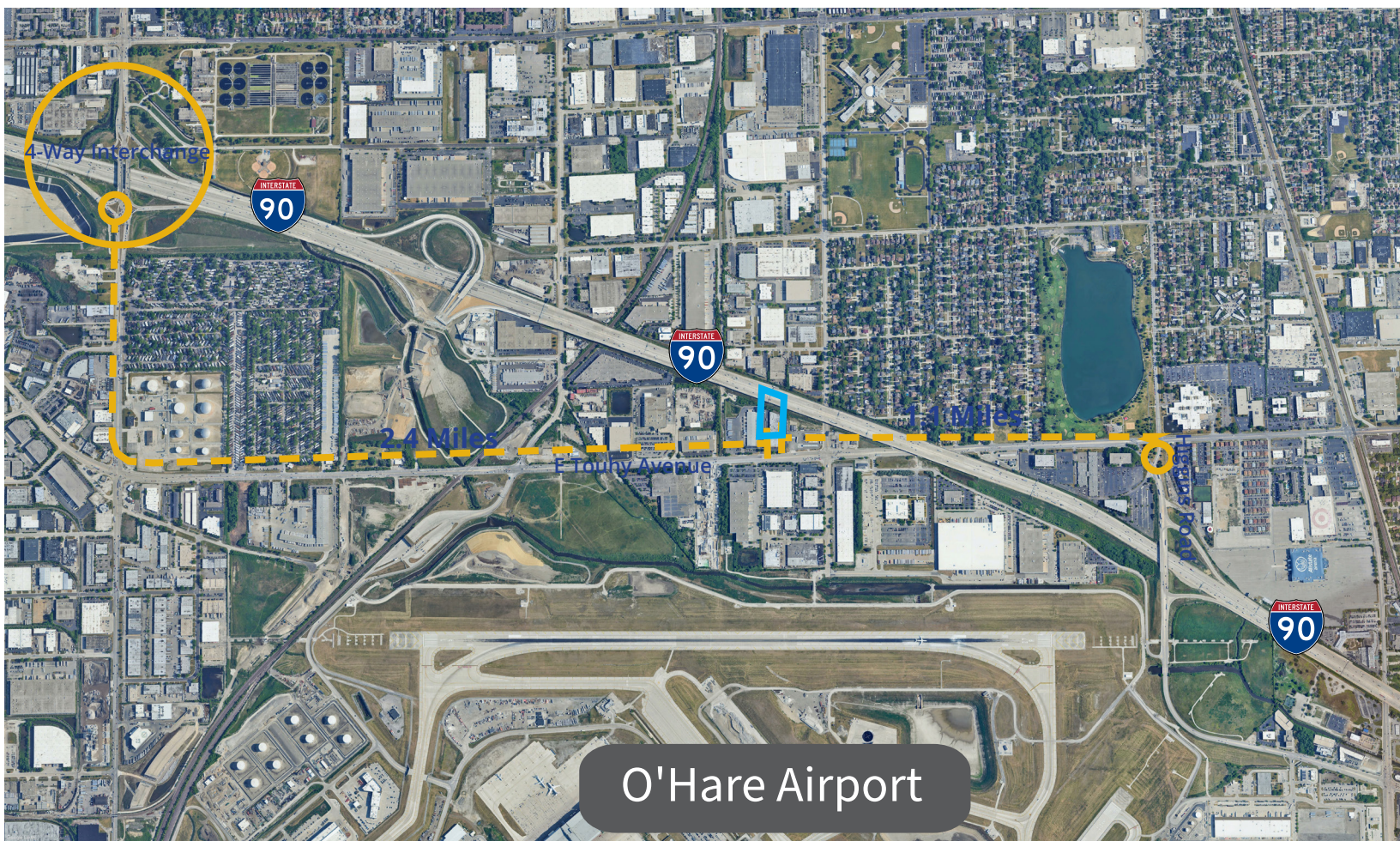
Floor Plan - Unit C



Site Plan - Unit C



Aerial



Daniel Wagener

847 816 2621

dwagener@wagenerequities.com

