

115 N. Brandon Drive, Glendale Heights, IL

Available June 1st



FOR LEASE: 7,300 SF in DuPage County

AVAILABLE: 7,300 SF

LOADING: 1 DOCK / 1 DID

POWER: 200 Amps @ 240V 3-Phase (Confirm)

CEILING HEIGHT: 16' Clear

SPRINKLER: Yes

PARKING: 7 Spaces

AGE: 1985

ZONING: I (Industrial)

RE TAXES: \$2.99 (2024)

LEASE RATE: \$13.00 PSF MG

- Unit Offers Private Loading Dock and Drive-In-Door
- Fully Temperature Controlled (A/C in Warehouse)
- Newly Renovated Offices
- Separately Metered Utilities

SCAN FOR LISTING



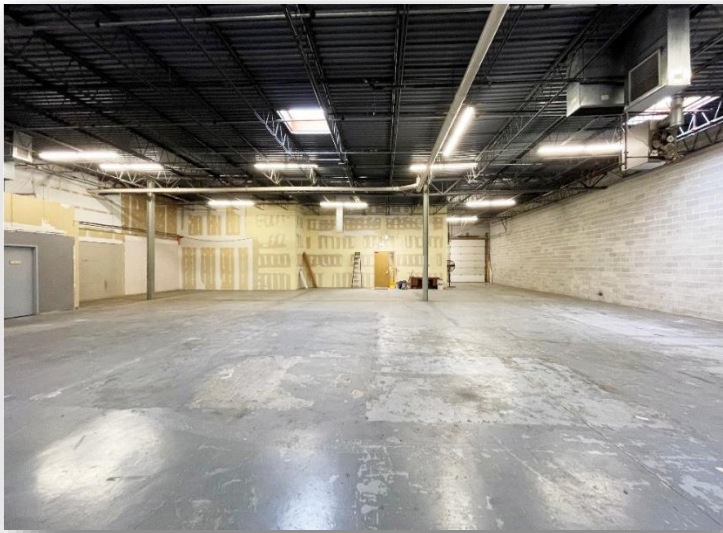
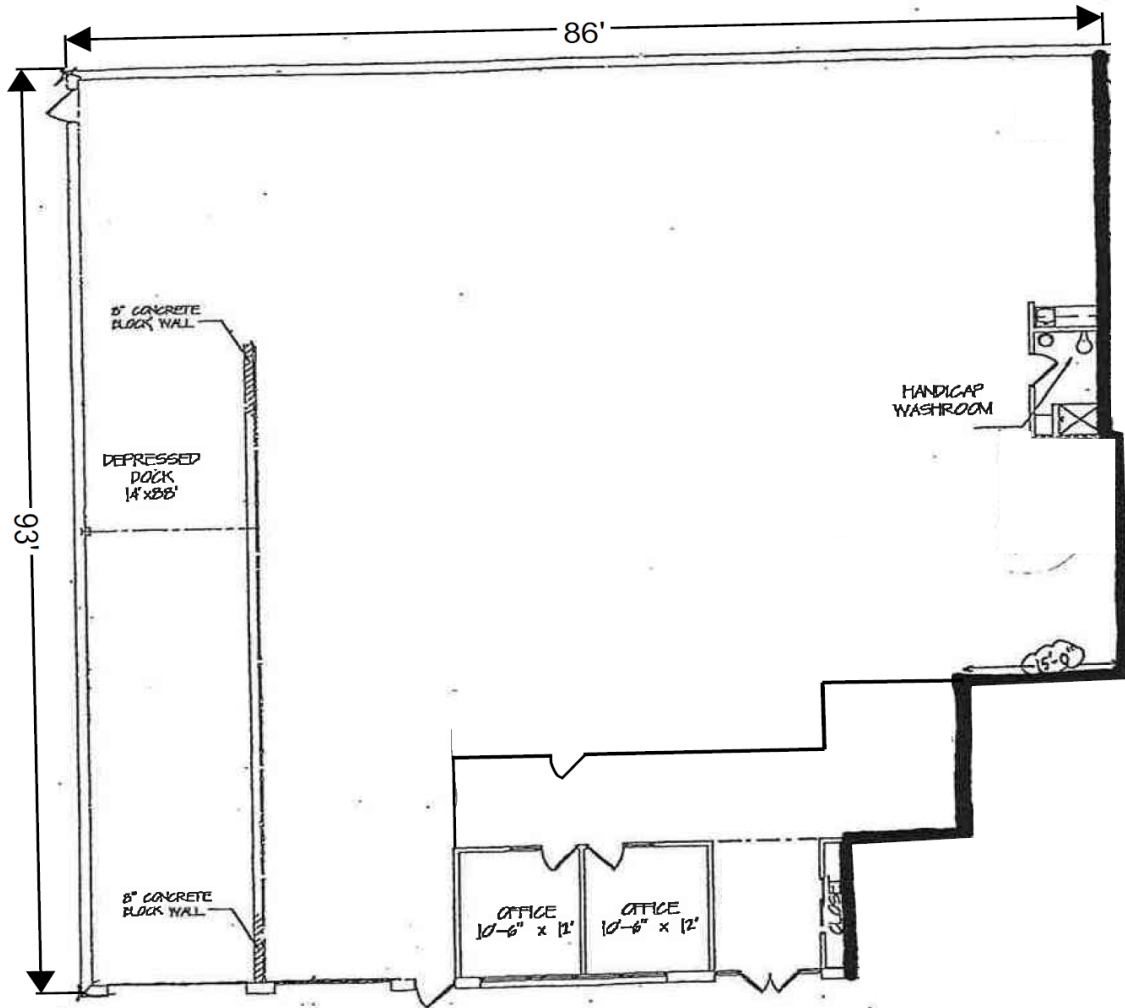
ENTRE
Commercial Realty LLC

Cory Kay
224-532-2497
ckay@entreccommercial.com

Mike DeSerto
224-588-3026
mdeserto@entreccommercial.com

Elisabeth Lazzara
847-310-4209
elazzara@entreccommercial.com

FLOOR PLAN



ENTRE
Commercial Realty LLC

Cory Kay
224-532-2497
ckay@entreccommercial.com

Mike DeSerto
224-588-3026
mdeserto@entreccommercial.com

Elisabeth Lazzara
847-310-4209
elazzara@entreccommercial.com

LOCATION



**HWY ACCESSIBILITY TO
I-355, I-290, & I-294**



**MINUTES FROM
O'HARE INT'L AIRPORT**



**LOCATED IN DUPAGE
COUNTY**