



Stonecreek Pointe



11201 NORTH TATUM BLVD | PHOENIX, AZ 85028

CBRE

Stonecreek Pointe

is a beautiful three-story, ±110,766 SF, Class A office building. Situated on ±5 acres, the property overlooks Stonecreek Golf Course and offers a contemporary creative office environment with spectacular panoramic views of Camelback Mountain, Piestawa Peak, and the Phoenix Mountains Preserve.

The property is located in the heart of one of Metro Phoenix's executive housing communities and is just a 5-minute drive from PV, the mixed-use redevelopment of Paradise Valley Mall.

New upgrades completed at Stonecreek Pointe include:

- New outdoor tenant amenity patio on the Stonecreek Golf Course
- Upgrades to existing interior tenant amenity lounge



PROPERTY FEATURES



Walk out access to the golf course



Balcony extensions on many suites



Large, functional ±37,000 SF floor plates



Prominent window lines



Activated and contemporary lobby



High-end creative office finishes



Monument signage on Tatum Blvd



New tenant lounge with comfortable seating areas, streaming news, and complimentary coffee and Wi-Fi





Suite Entrance & Reception



Remodeled Restrooms



Conference Room



AVAILABLE SUITES

SUITE 144

±1,909 SF Spec Suite

SUITE 150

±3,567 SF Spec Suite (Available 09-01-2026)

SUITE 255

±3,365 SF Spec Suite

LEASE RATE

\$36.00/SF Full Service

EXPENSES

Base Year

TIs

Negotiable

PARKING

3.9/1,000 offering a combination of surface and structured parking.

- + Covered Reserved Garage: \$65.00/Month
- + Covered Reserved Surface: \$50.00/Month

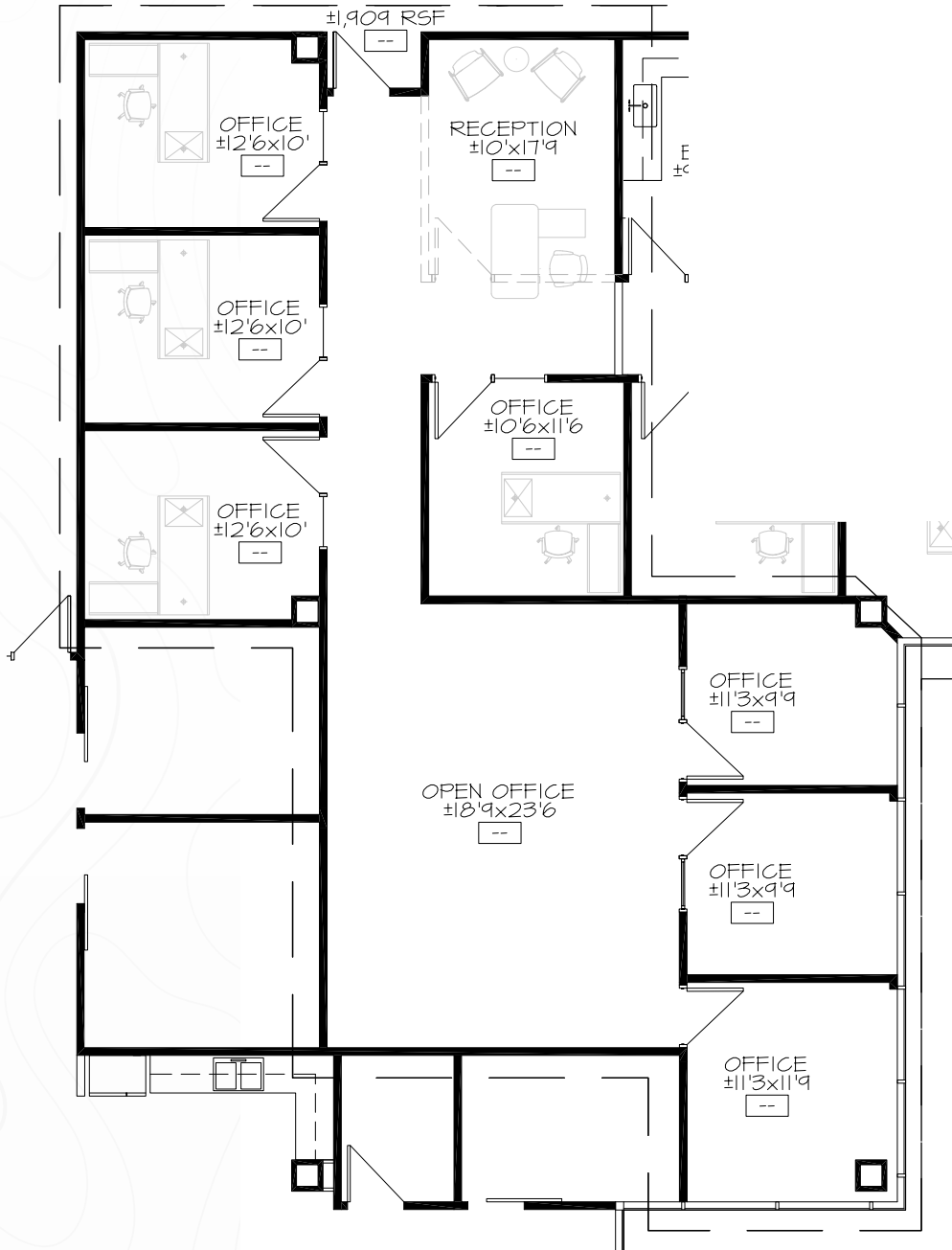
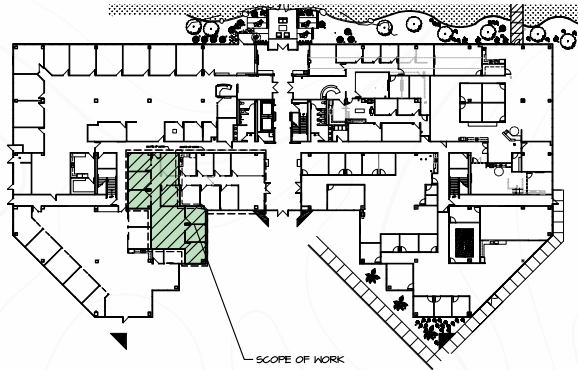


Available Suites

Suite 144

±1,909 SF SPEC SUITE

\$36.00/SF full service



Available Suites

Suite 150

±3,567 SF SPEC SUITE (AVAILABLE 09-01-2026)

\$36.00/SF full service



NOT TO SCALE

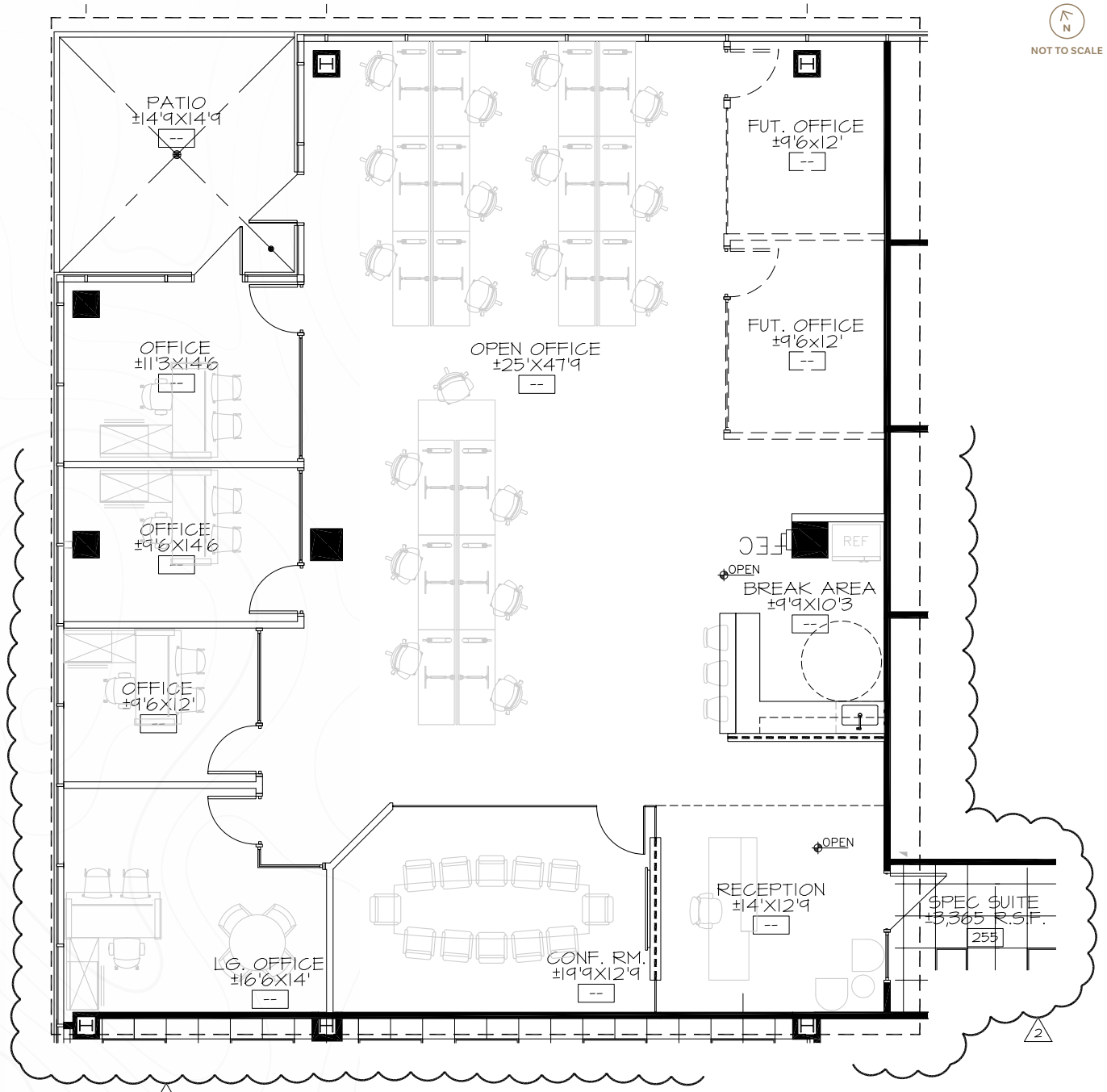
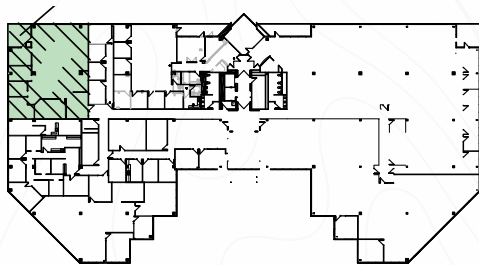
Available Suites

Suite 255

±3,365 SF SPEC SUITE

\$36.00/SF full service

CONCEPTUAL PLAN



Superior Location

Stonecreek Pointe's location offers a full array of mixed-use amenities:

STONECREEK GOLF COURSE

18-hole championship golf course & clubhouse

PARADISE VILLAGE GATEWAY

Surrounded by Paradise Village Gateway, Paradise Valley Marketplace featuring Albertson's, Fry's Marketplace, Trader Joe's, Chase Bank, Walgreens, Five Guys, Panera Bread, Ross, Staples, Starbucks and Z-Tejas Grill.

ABUNDANT RETAIL

±2.3M SF of combined amenities in eight retail centers nearby, including the reimagined PV (formerly Paradise Valley Mall), a 100-acre mixed-use development. PV will be home to high-end dining, entertainment and retail, a centrally located park and community gathering space.

CONVENIENT FREEWAY ACCESS

The property is conveniently located in the Paradise Valley, Tatum Boulevard corridor, just five minutes from SR-51 and 10 minutes from the Loop 101 freeway.



EXPLORE THE AREA
WITH AERIALSPHERE



NOT TO SCALE

PHOENIX MOUNTAINS PRESERVE

GAO easy
TORCHY'S TACOS
ChopShop
noodles & COMPANY
CARTEL ROASTING CO.

TRADER JOE'S
WHOLE FOODS MARKET

SHEA BLVD

TATUM BLVD

STONECREEK GOLF CLUB

STONECREEK BLVD
STONECREEK POINTE
SP
11201 NORTH TATUM BLVD

CACTUS RD

PV –
PARADISE VALLEY MALL
REDEVELOPMENT



Stonecreek Pointe

11201 NORTH TATUM BLVD | PHOENIX, AZ 85028

LUKE WALKER

Senior Vice President

+1 602 735 1711 | luke.walker@cbre.com

JAMIE SWIRTZ

Senior Vice President

+1 480 343 8586 | jamie.swirtz@cbre.com

NORTH BEACON CAPITAL, LLC
ASSET MANAGEMENT

CBRE

© 2026 CBRE, Inc. All rights reserved. This information has been obtained from sources believed reliable, but has not been verified for accuracy or completeness. You should conduct a careful, independent investigation of the property and verify all information. Any reliance on this information is solely at your own risk. All marks displayed on this document are the property of their respective owners, and the use of such logos does not imply any affiliation with or endorsement of CBRE. Photos herein are the property of their respective owners. Use of these images without the express written consent of the owner is prohibited. PMStudio_June2026