

AVAILABLE GARAGE SUITE

3220 Watson Boulevard, Town of Union, NY

(Located 1.5 miles from NYS Route 17 at Exit 69)

Salient Features:

Asking rent plus utilities (electric, gas, water, sewer)

- Approximately 4,200 square feet;
- Covered overhang;
- 10' x 10' overhead door;
- 24/7 access to unit;
- Interior ceiling height is approximately 10.4' high;
- Located just west of the Hooper Road intersection; and
- Additional direct access from North Brookside Avenue.

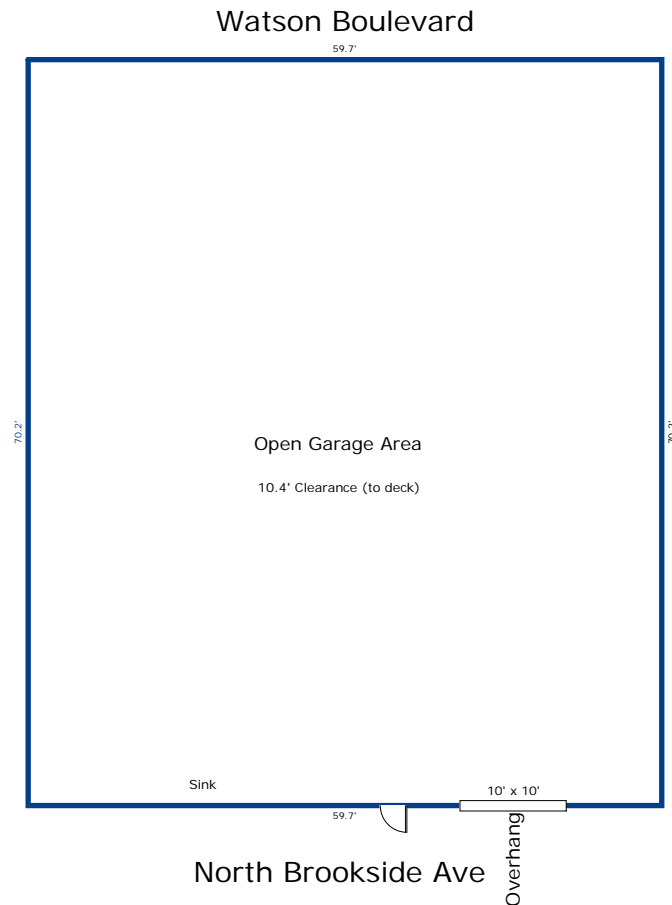


Figure 1 – Layout of the premises



365 HARRY L. DRIVE, JOHNSON CITY, NY 13790

PHONE 607.729.3690 / FAX 607.729.0823

JSMILLER@JSMILLERAPPRAISAL.COM



Figure 2 – Aerial photograph of the site

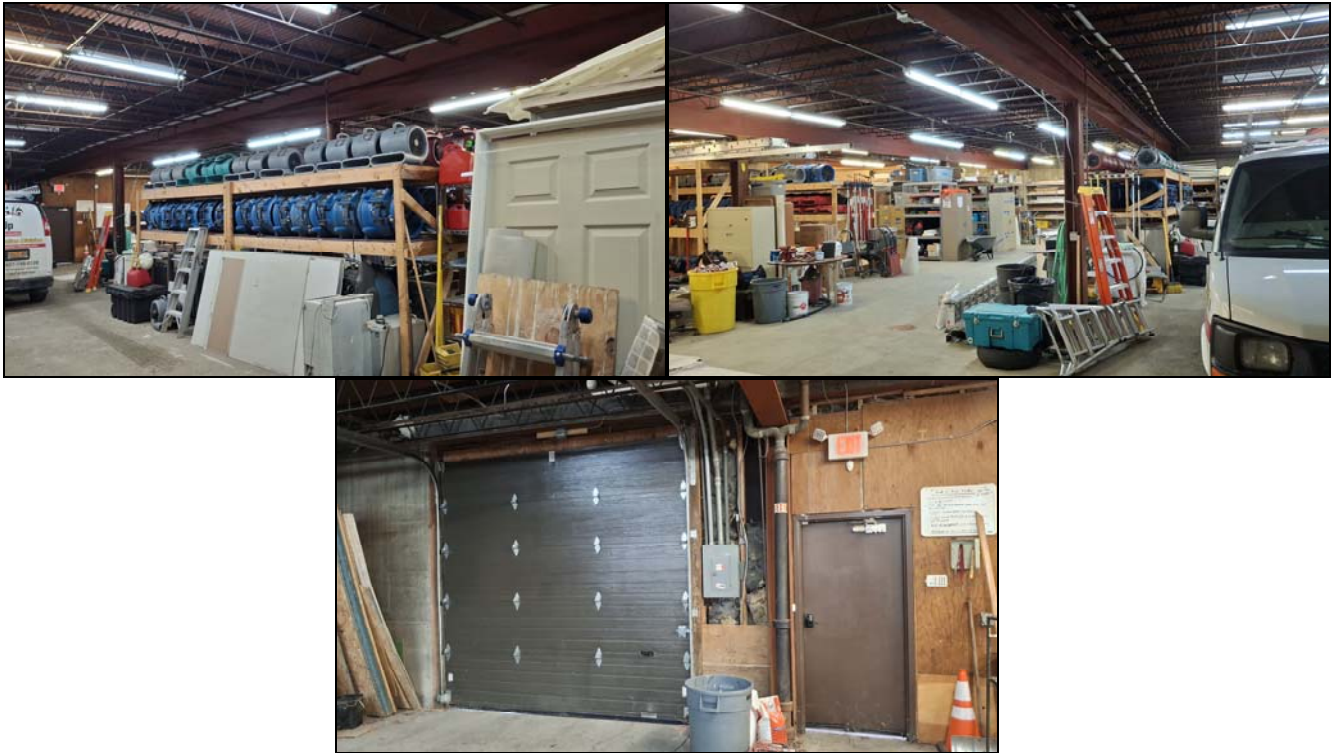


Figure 3 – Interior of the storage suite