

LINDON MARKETPLACE

550 & State Street (SWC) • Lindon, Utah 84042



HIGHLIGHTS

- RETAIL SPACE FOR LEASE:
UNIT C - 1,802 SF
UNIT E - 2,240 SF
- LEASE RATE: CONTACT AGENTS
- NNNS: \$7.13 PSF
- ACCESS/VISIBILITY FROM STATE ST
- NEXT TO WALMART

JOE MILLS

801.930.6755 | jmills@legendcommercial.com

TANNER OLSON

801.930.6752 | tolson@legendcommercial.com

CHLOE CYPERS

801.644.6299 | ccypers@legendcommercial.com

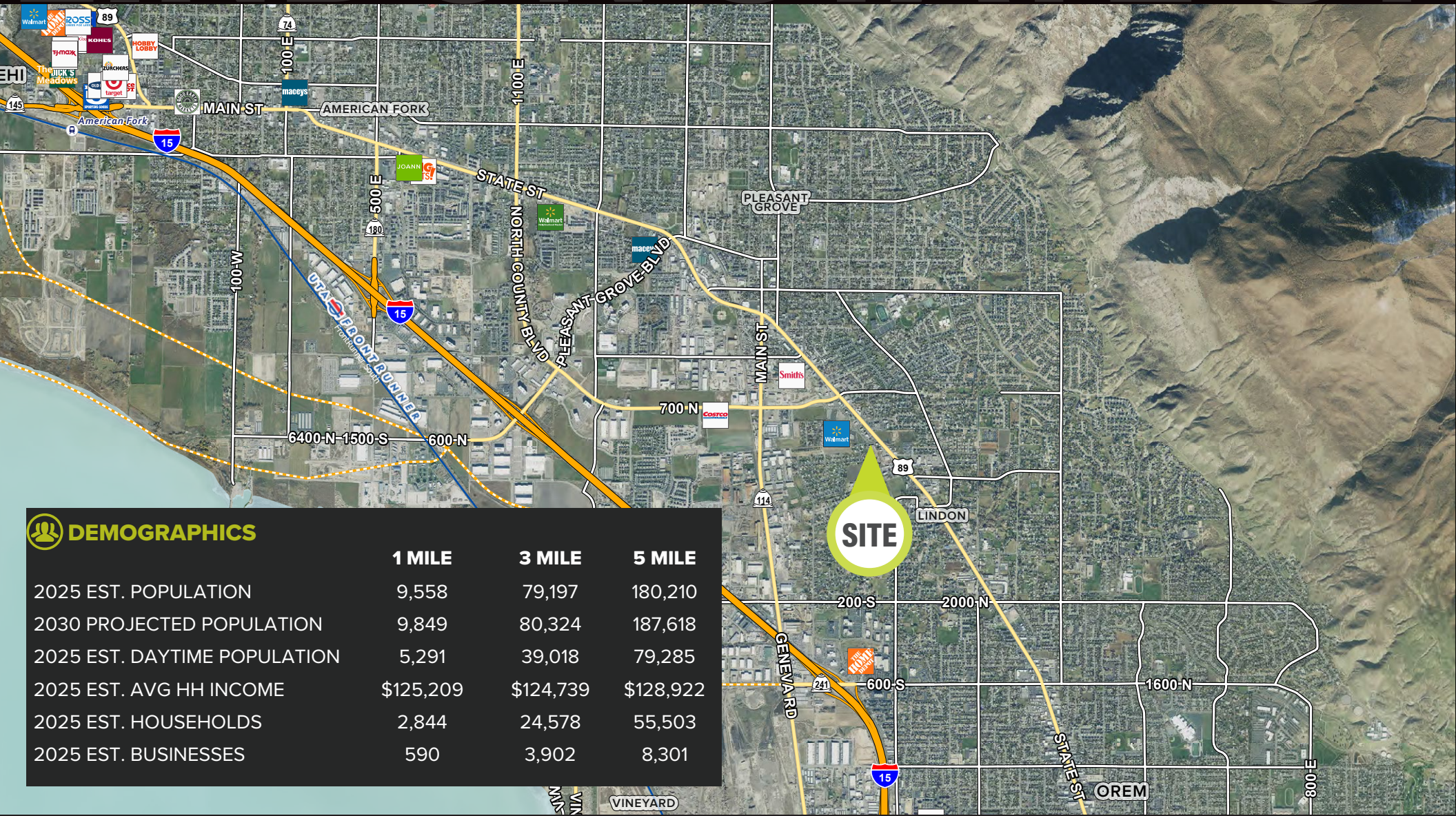


801.930.6750 | www.legendcommercial.com
2180 S 1300 E, Suite 240 | Salt Lake City, UT 84106

© Legend Partners, LLP. All rights reserved. All information contained herein is from sources deemed reliable; however, no representation or warranty is made to the accuracy thereof.

LINDON STATE ST

LOCATION



DEMOGRAPHICS

	1 MILE	3 MILE	5 MILE
2025 EST. POPULATION	9,558	79,197	180,210
2030 PROJECTED POPULATION	9,849	80,324	187,618
2025 EST. DAYTIME POPULATION	5,291	39,018	79,285
2025 EST. AVG HH INCOME	\$125,209	\$124,739	\$128,922
2025 EST. HOUSEHOLDS	2,844	24,578	55,503
2025 EST. BUSINESSES	590	3,902	8,301

JOE MILLS

801.930.6755 | jmills@legendcommercial.com

TANNER OLSON

801.930.6752 | tolson@legendcommercial.com

CHLOE CYPERS

801.644.6299 | ccypers@legendcommercial.com



801.930.6750 | www.legendcommercial.com
 2180 S 1300 E, Suite 240 | Salt Lake City, UT 84106

LINDON STATE ST



JOE MILLS

801.930.6755 | jmills@legendcommercial.com

TANNER OLSON

801.930.6752 | tolson@legendcommercial.com

CHLOE CYPERS

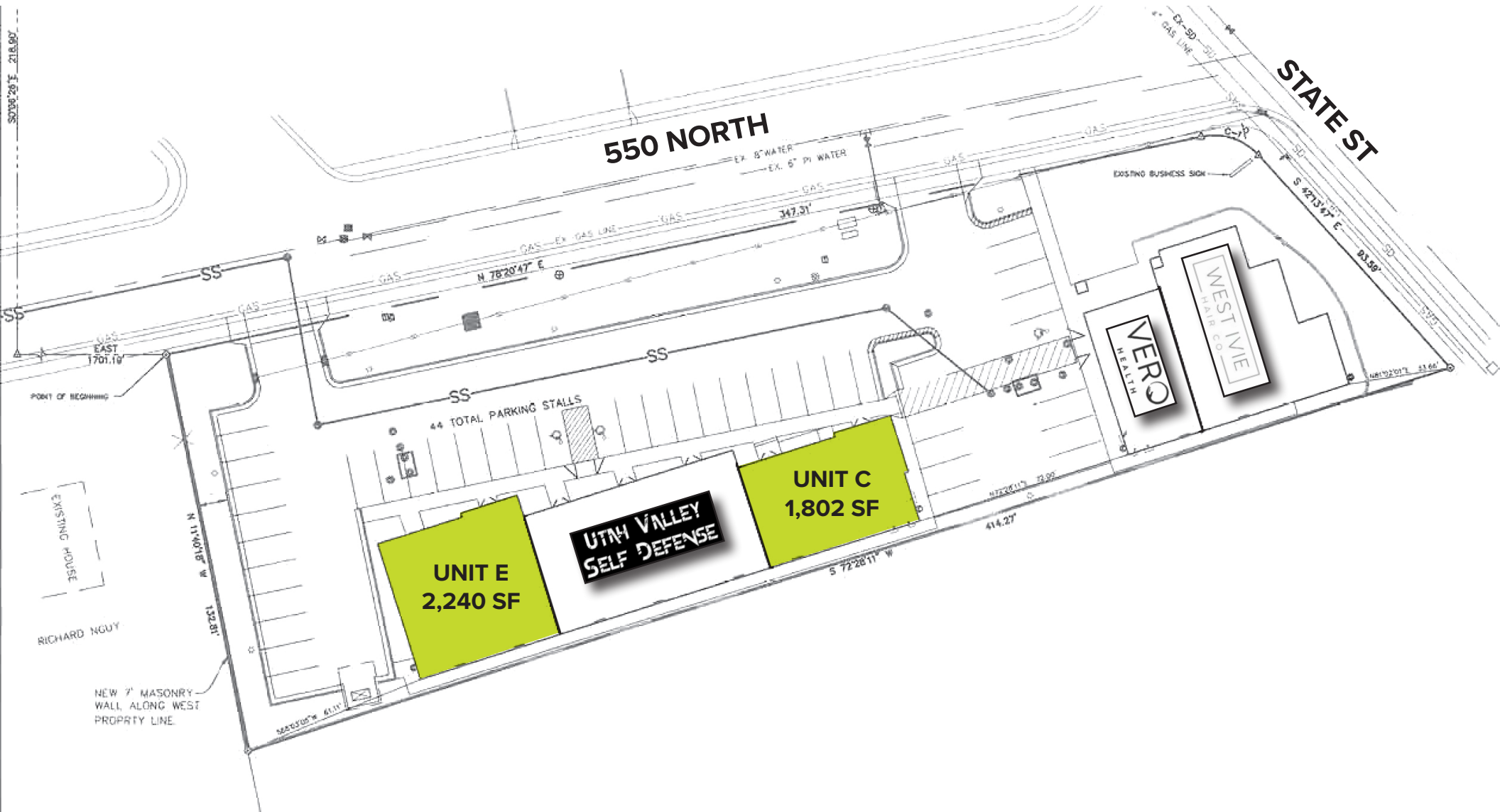
801.644.6299 | ccypers@legendcommercial.com



LEGEND
COMMERCIAL

801.930.6750 | www.legendcommercial.com
2180 S 1300 E, Suite 240 | Salt Lake City, UT 84106

WINDON STATE ST



JOE MILLS

801.930.6755 | jmills@legendcommercial.com

TANNER OLSON

801.930.6752 | tolson@legendcommercial.com

CHLOE CYPERS

801.644.6299 | ccypers@legendcommercial.com



801.930.6750 | www.legendcommercial.com
2180 S 1300 E, Suite 240 | Salt Lake City, UT 84106