

 **Investors**
REAL ESTATE PARTNERS

**FOR
SALE**

6704 Williamson Road, Roanoke VA

INVESTORS REAL ESTATE PARTNERS | INVESTORSREP.COM



 **Investors**
REAL ESTATE PARTNERS

BRYAN MUSSELWHITE, CCIM, SIOR
SENIOR VICE PRESIDENT
540.314.7796
BRYAN@INVESTORSREP.COM

WILL FARMER
SENIOR VICE PRESIDENT
540.739.4446
WILL@INVESTORSREP.COM

OFFERING SUMMARY

6704 WILLIAMSON ROAD, ROANOKE, VA, 24019

Price:	\$1,099,000
Price Per SF:	\$100
Parcel Area:	±0.52 Acres
Building SF:	11,000 SF
Year Built:	1955
Zoning:	C2

PROPERTY HIGHLIGHTS

- Prime Williamson Road Commercial Corridor Location
- ±11,000 SF (5,220 SF Finished + 5,780 SF Flex)
- Situated On Approximately 0.52 Acres
- Zoned C-2 Allowing Variety of Uses
- Open Showroom Areas
- Rear Warehouse with Roll-Up Door Access
- Private Offices & Storage Areas In Place
- Easy Access To Downtown Roanoke And I-581



PROPERTY PHOTOS | OCCUPIED



INVESTORS REAL ESTATE PARTNERS | INVESTORSREP.COM

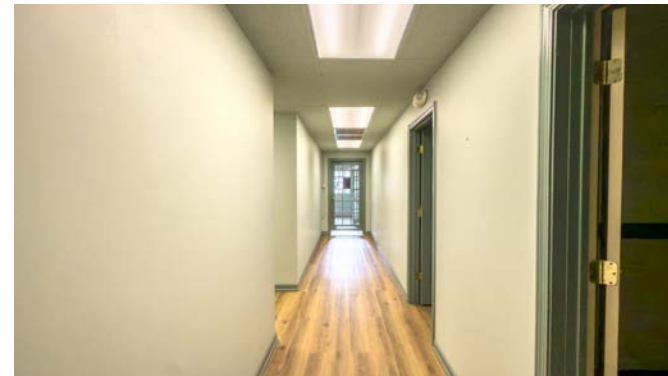


Investors
REAL ESTATE PARTNERS

BRYAN MUSSELWHITE, CCIM, SIOR
SENIOR VICE PRESIDENT
540.314.7796
BRYAN@INVESTORSREP.COM

WILL FARMER
SENIOR VICE PRESIDENT
540.739.4446
WILL@INVESTORSREP.COM

PROPERTY PHOTOS | VACANT



INVESTORS REAL ESTATE PARTNERS | INVESTORSREP.COM



BRYAN MUSSELWHITE, CCIM, SIOR
SENIOR VICE PRESIDENT
540.314.7796
BRYAN@INVESTORSREP.COM

WILL FARMER
SENIOR VICE PRESIDENT
540.739.4446
WILL@INVESTORSREP.COM



Positioned along the highly traveled Williamson Road corridor, this ±11,000 SF commercial building offers users a flexible layout with strong visibility and convenient access.

Situated on approximately 0.52 acres and zoned C-2, the property supports a variety of retail, showroom, service, or flex uses within an established commercial corridor. Originally constructed in 1955, the building features expansive open display areas, private offices, storage space, and a rear warehouse component with roll-up door access, providing adaptability for a range of business operations.

The property has supported retail and service users and is well suited for owner-users or investors seeking scale along one of Roanoke's primary north-south corridors with straightforward access to Downtown Roanoke and I-581.

Priced at \$1,099,000 – Call to Learn More!

INVESTORS REAL ESTATE PARTNERS | INVESTORSREP.COM



Investors
REAL ESTATE PARTNERS

BRYAN MUSSELWHITE, CCIM, SIOR
SENIOR VICE PRESIDENT
540.314.7796
BRYAN@INVESTORSREP.COM

WILL FARMER
SENIOR VICE PRESIDENT
540.739.4446
WILL@INVESTORSREP.COM