

The logo for NAI Commercial, featuring the letters 'NAI' in a bold, sans-serif font with a red diagonal line through the 'A', followed by the word 'Commercial' in a smaller, black, sans-serif font.

NAICommercial

A red diagonal banner in the top right corner containing the text '2,862 SF' in white, bold, sans-serif font.

2,862 SF

A photograph of a modern glass skyscraper in a cityscape, with other buildings and a construction site visible in the background. The sky is clear and bright.

#250 - 605 Robson Street | Vancouver, BC

FOR LEASE | Improved Office Space

Currently improved with large open space, 1 internal office, 1 window office, large storage room and kitchenette. The Landlord will consider a reconfiguration of the space to suit the Tenant's needs. The Premises has exclusive use of an approximately 800 square foot patio.

Roy Gibbs, LL.B
Personal Real Estate Corporation
Commercial Leasing & Sales
778 834 4050
rgibbs@naicommercial.ca

Chris Oteman, B.Sc.
Commercial Leasing & Sales
604 828 0535
coteman@naicommercial.ca

NAI Commercial
1075 W Georgia St, Suite 1250
Vancouver, BC V6E 3C9
+1 604 683 7535
naicommercial.ca

#250 - 605 Robson Street

Vancouver, BC

Property Details

Unit Size:	2,862 SF
Net Rent:	\$27.00/SF
Additional Rent:	\$22.79/SF (2025)
Availability:	January 1, 2026

Premises:

Currently improved with large open space, 1 internal office, 1 window office, large storage room and kitchenette.

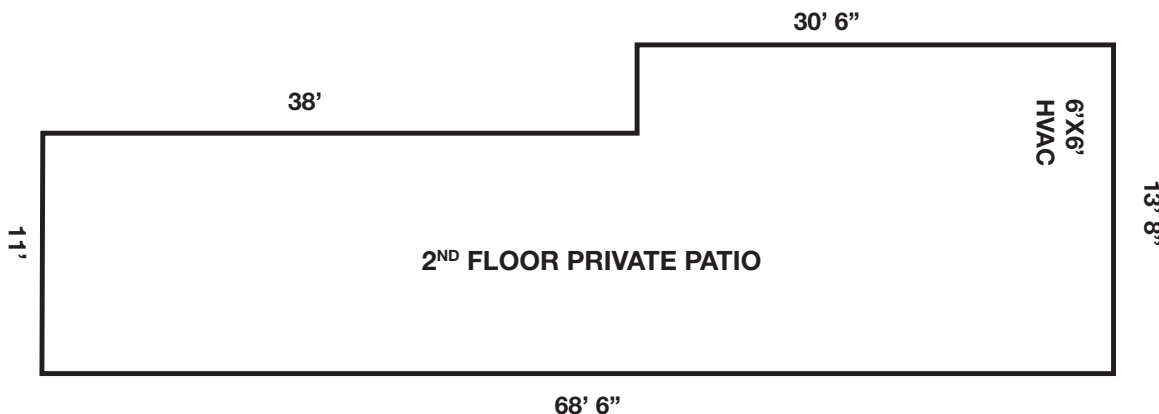
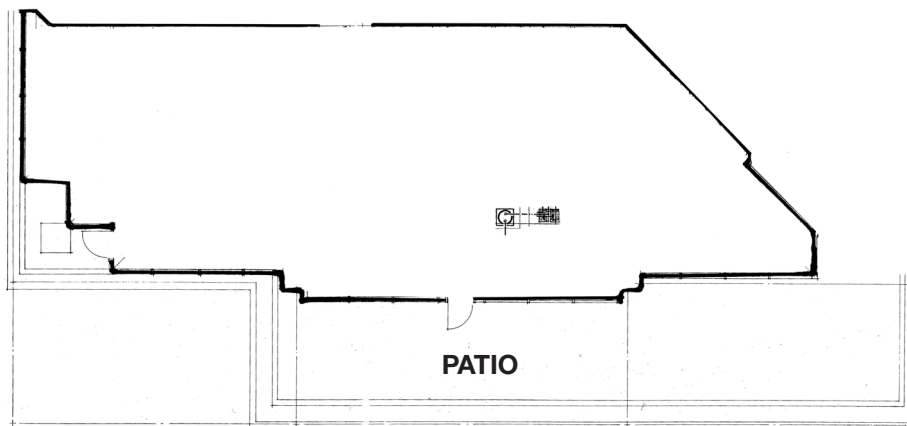
Building Details:

605 Robson Street is one block from Vancouver City Centre Skytrain Station and provides abundant visitor parking (available at half hour, hourly, or full day rates).

The building also provides abundant random and reserved tenant parking, secure bicycle storage, and end of trip facilities.

On-site ownership and management provides first-class service to tenants.

Floor Plan



Roy Gibbs, LL.B

Personal Real Estate Corporation
Commercial Leasing & Sales
778 834 4050
rgibbs@naicommercial.ca

Chris Oteman, B.Sc.

Commercial Leasing & Sales
604 828 0535
coteman@naicommercial.ca





VANCOUVER CITY CENTRE

GRANVILLE

PACIFIC CENTRE

ROBSON SQUARE

605 ROBSON

LAW COURTS

ORPHEUM

SEYMOUR ST

ROBSON ST

VANCOUVER PUBLIC LIBRARY

WITHIN 5-MIN WALKING DISTANCE

- Five Guys
- Meat & Bread
- Blenz Coffee
- Aladdin Café
- Guu Japanese
- Bahar Bakery & Cafe
- H-Mart
- Cafe Monet Bakery
- Tractor Foods
- JINYA Ramen
- JAPADOG
- CIBC Bank
- The Ox Pub
- Chipotle Mexican
- Jollibee
- Starbucks
- Tim Hortons
- Glowbal
- London Drugs
- Pacific Centre
- Hudson's Bay
- Popeyes
- McDonald's
- Dublin Calling Bar
- Staples
- Fable Diner & Bar
- Cafe Medina
- Viet Sub Vietnamese
- Falafel King
- Paramount Fine Foods
- Gong Cha
- Taf's Cafe
- The Fountainhead Pub

Roy Gibbs, LL.B
 Personal Real Estate Corporation
 Commercial Leasing & Sales
 778 834 4050
 rgibbs@naicommercial.ca

Chris Oteman, B.Sc.
 Commercial Leasing & Sales
 604 828 0535
 coteman@naicommercial.ca



No warranty or representation, express or implied, is made as to the accuracy of the information contained herein, and the same is submitted subject to errors, omissions, change of price, rental or other conditions, prior sale, lease or financing, or withdrawal without notice, and of any special listing conditions imposed by our principals no warranties or representations are made as to the condition of the property or any hazards contained therein are any to be implied. Aerial image(s) courtesy of Google, Landsat/Copernicus

NAI Commercial
 1075 W Georgia St, Suite 1250
 Vancouver, BC V6E 3C9
 +1 604 683 7535
 naicommercial.ca