



Building owned and managed by  
**HEALTHCARE REALTY**



**515**  
**E MAIN**  
**STREET**



**Medical and Creative Office Space for Lease**

# Welcome to 515 E MAIN STREET



**56,856 SF**  
TOTAL SF



**5**  
FLOORS



**Medical & Creative**  
OFFICE SPACE



**Walkable**  
AMENITIES



**Free Parking**  
ON SITE



**Professional Management**  
AND ARCHITECTURAL SPACE PLANNING



**Market leading**  
TENANT IMPROVEMENT PACKAGES

**515 E Main Street**  
Building owned and managed by  
**HEALTHCARE REALTY**

**Leasing Information:**  
Andy Dutcher +1 614 460 4403  
andrew.dutcher@jll.com  
Joey Lamb +1 614 460 4412  
joeylamb@jll.com



## Building Features:

- Newly renovated lobby, restrooms, and elevators
- Mix of private office and open collaboration space
- Exposed ceilings and concrete floors
- Signage opportunity
- In the heart of downtown with convenient highway access

# Premier Location



## DINING

1. First Watch
2. Arepazo Tapas Bar Grille
3. Katzinger's Delicatessen
4. Kittie's Cakes
5. Pistacia Vera
6. Club 185
7. Bendi Wok n' Bar
8. Lindey's
9. Cento
10. Starbucks
11. Tim Hortons
12. Panera Bread
13. Parsons North Brewing Company
14. Plank's Cafe & Pizzeria
15. Sycamore
16. McDonald's
17. The Walrus
18. Indian Oven
19. Dirty Frank's Hot Dog Palace
20. 4th & State
21. The Olde Towne Tavern
22. HangOverEasy
23. Gemüt Biergarten
24. Upper Cup Coffee
25. Alchemy Café
26. Simply Honest Cafe
27. The Mercury Diner
28. Matt and Tony's Kitchen x Tavern

## FITNESS

33. Olde Towne Fitness
34. The Fitness Loft Columbus
35. Shape Fitness 24hrs
36. Resolve Fitness
37. Beyond Limits Training
38. The Pro's Gym

## GROCERY & RETAIL

39. Kroger
40. CVS
41. The Hills Market Downtown
42. The Book Loft of German Villag

## LODGING

43. Renaissance Columbus Downtown Hotel
44. The Plaza Hotel Columbus at Capitol Square
45. Holiday Inn Columbus Dwtwn-Capitol Square, an IHG Hotel
46. The Westin Great Southern Columbus
47. Courtyard Columbus Downtown
48. Holiday Inn Express Columbus Downtown, an IHG Hotel



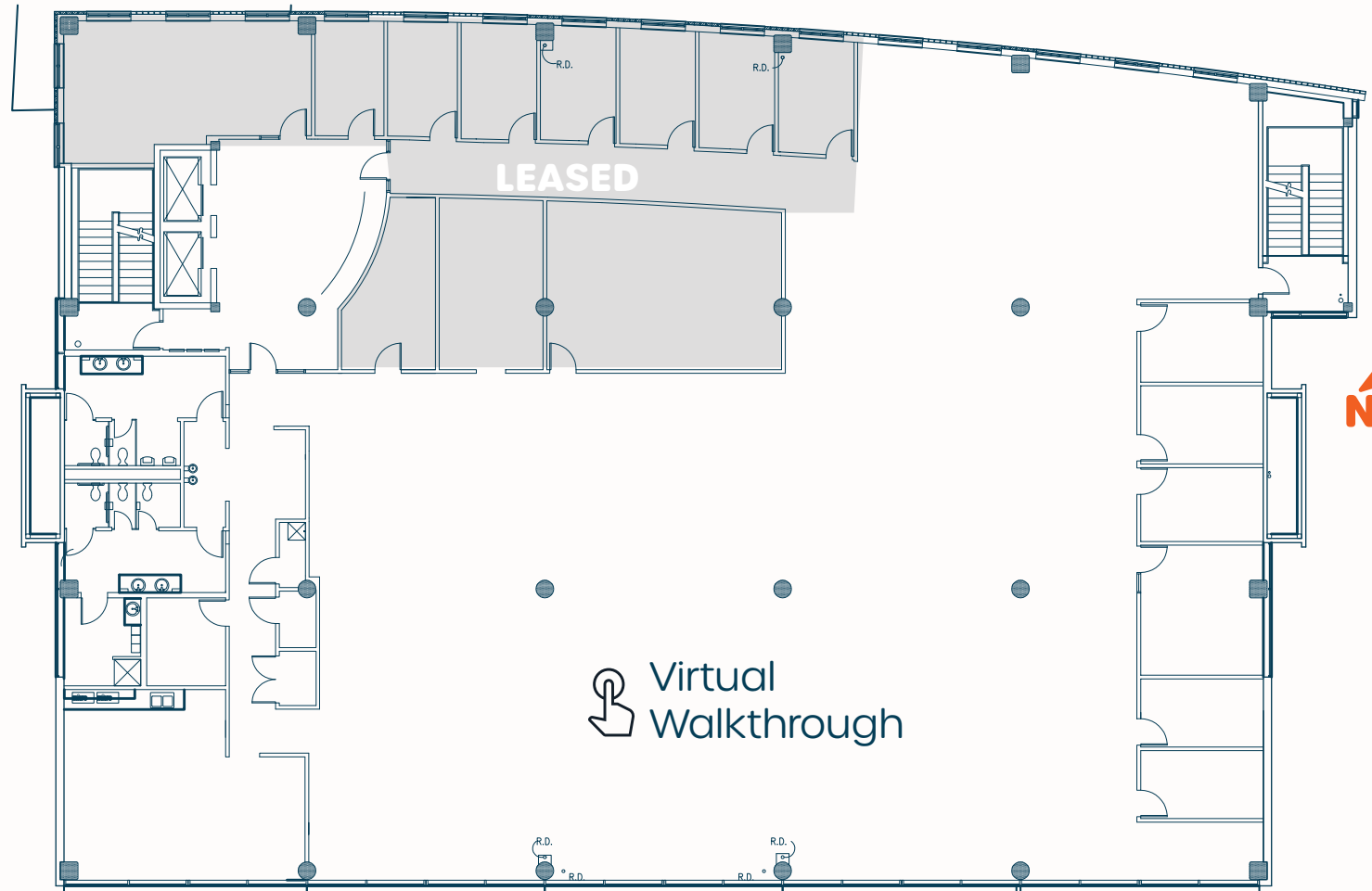
**515 E Main Street**  
 Building owned and managed by  
**HEALTHCARE REALTY**

**Leasing Information:**  
 Andy Dutcher +1 614 460 4403  
 andrew.dutcher@jll.com  
 Joey Lamb +1 614 460 4412  
 joey.lamb@jll.com

# Second Floor

conceptual plan | example spaces

11,399 SF | existing plan



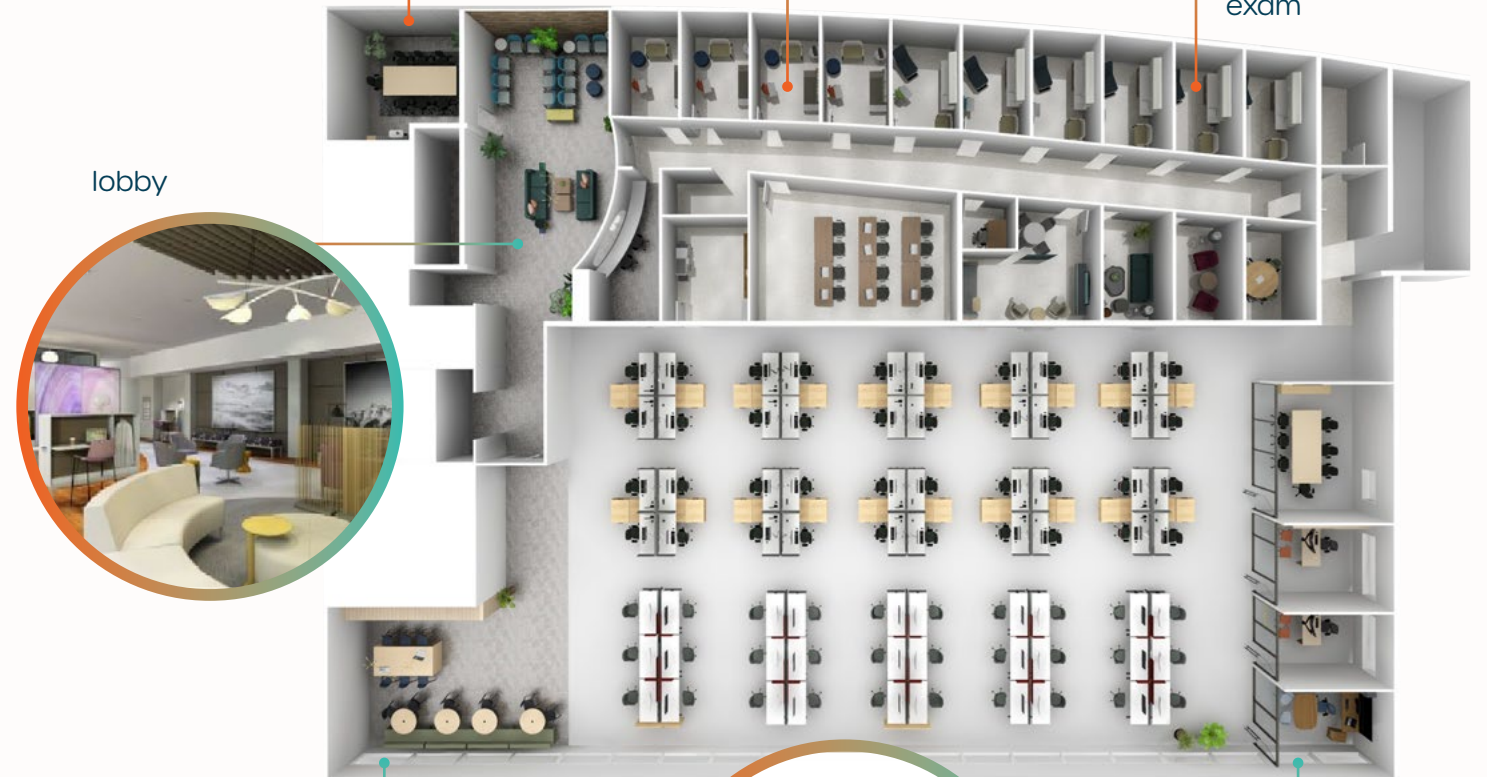
conference



consult



exam



lobby



community



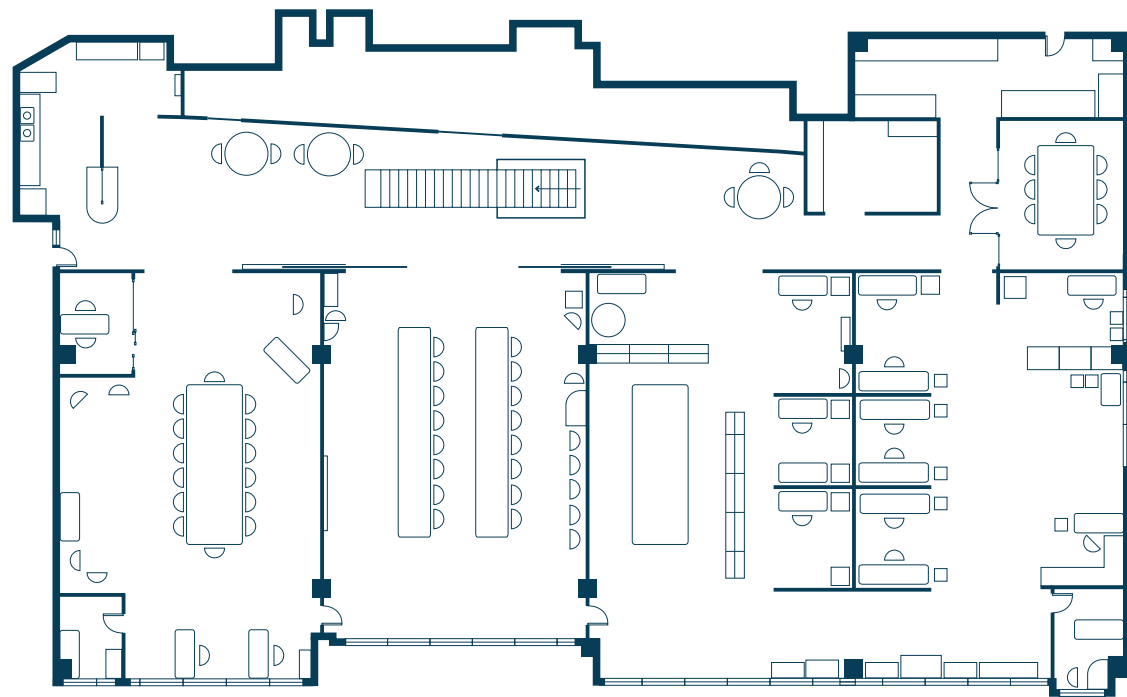
workstations



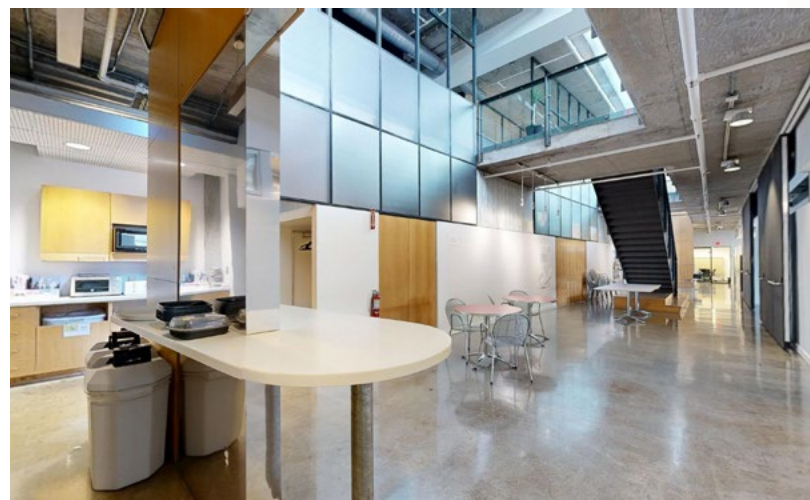
private office

# Third Floor

Suite 3  
6,851 SF



 Virtual Walkthrough

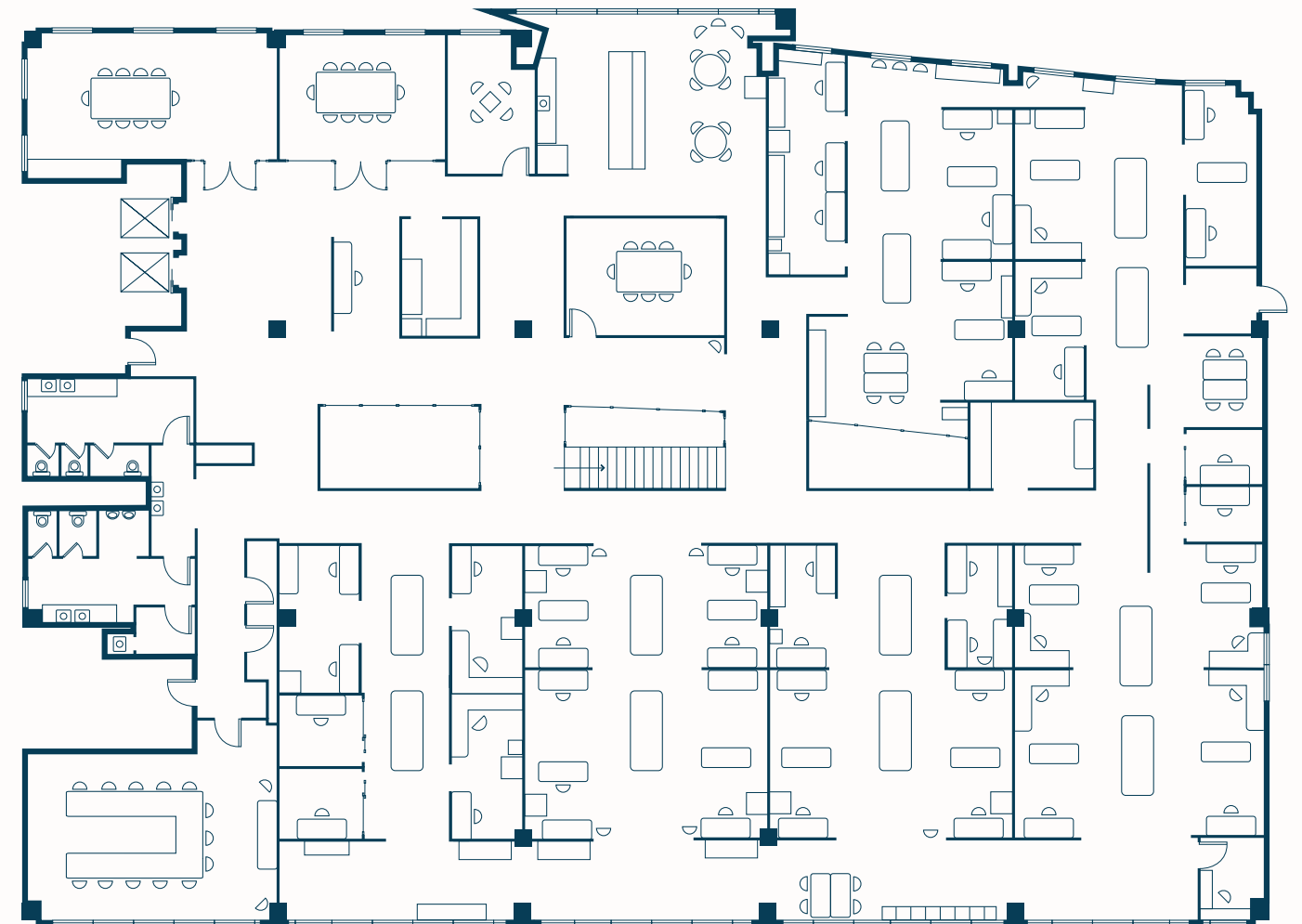


515 E Main Street  
Building owned and managed by  
**HEALTHCARE REALTY**

**Leasing Information:**  
Andy Dutcher +1 614 460 4403  
andrew.dutcher@jll.com  
Joey Lamb +1 614 460 4412  
joey.lamb@jll.com

# Fourth Floor

Full floor  
15,970 SF



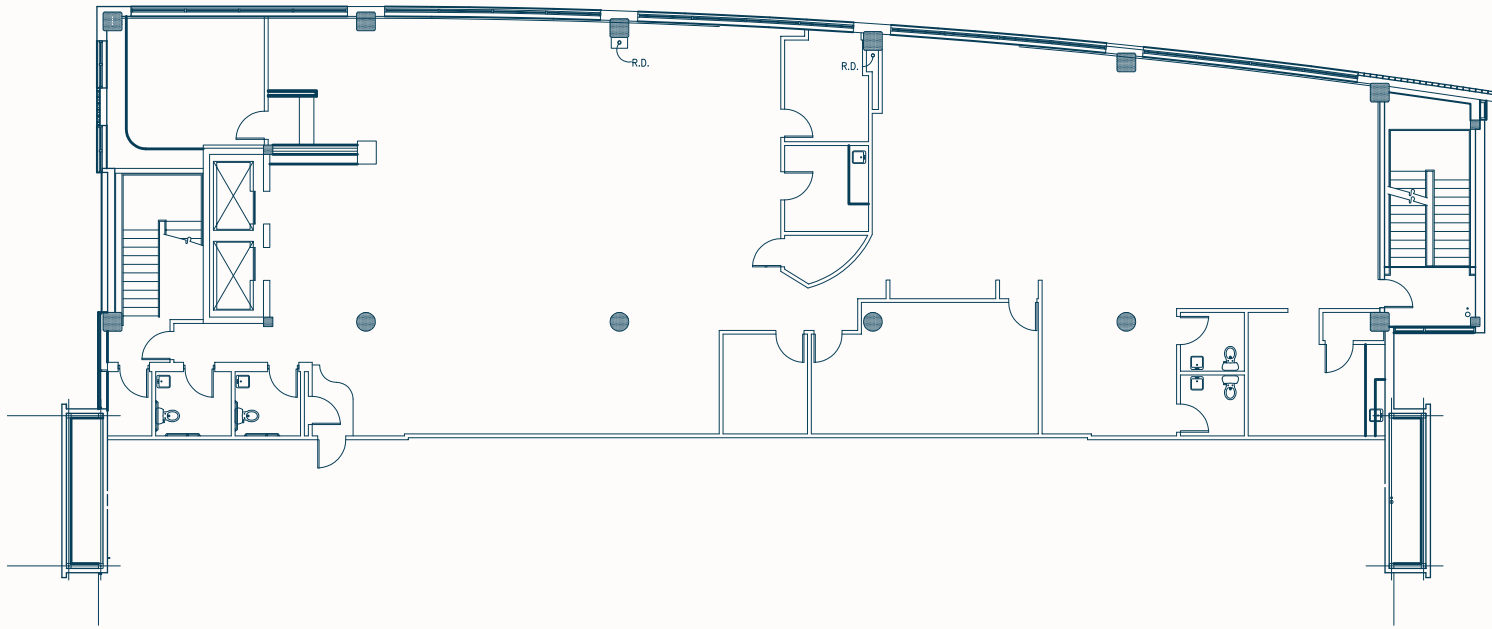
 Virtual Walkthrough

515 E Main Street  
Building owned and managed by  
**HEALTHCARE REALTY**

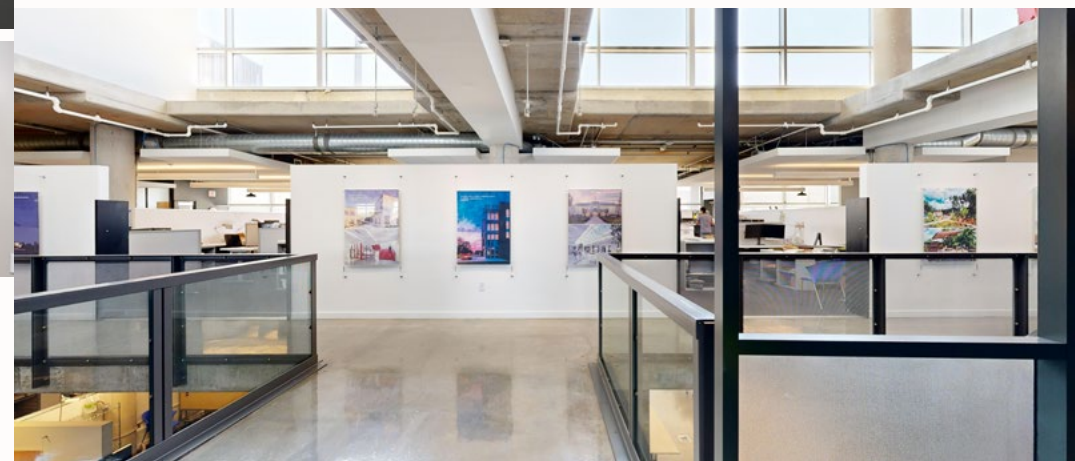
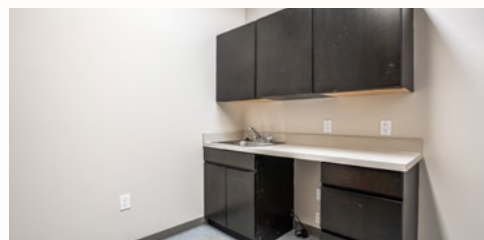
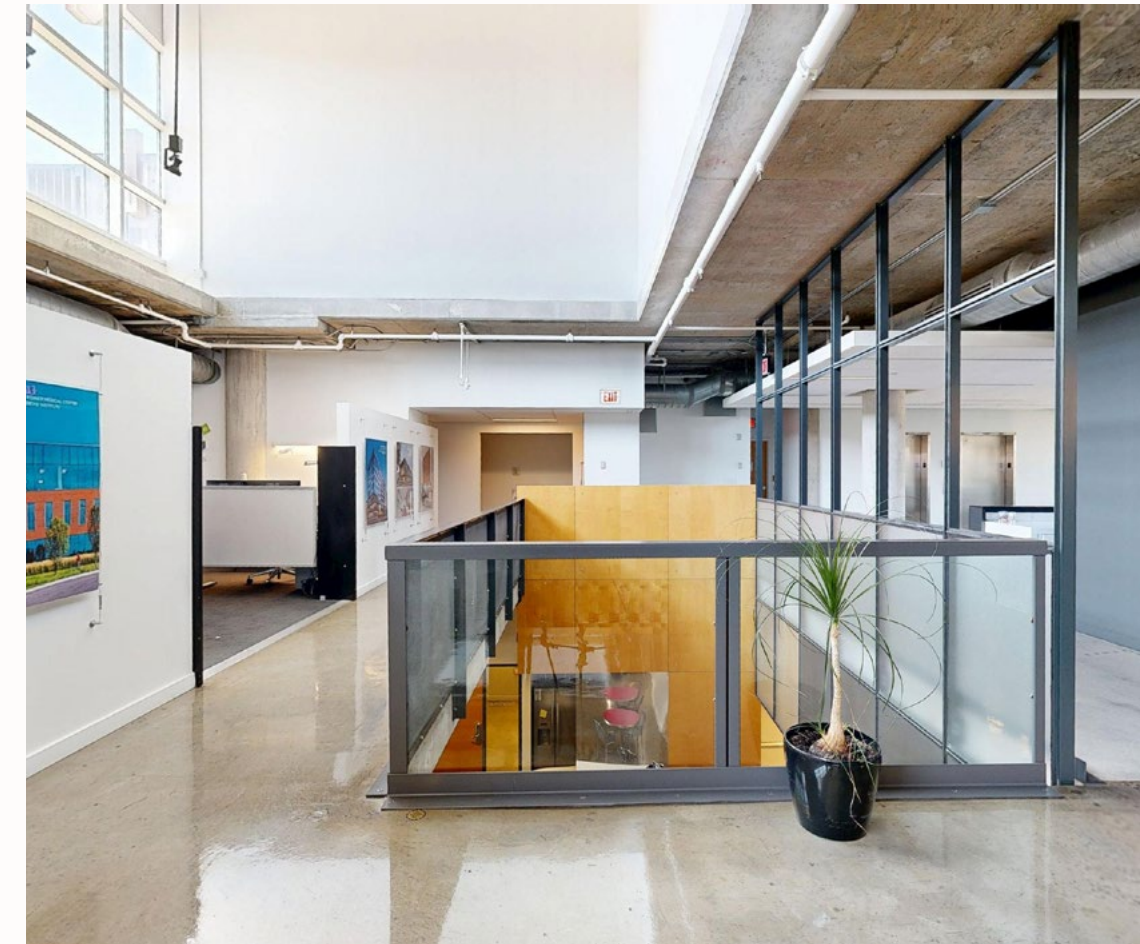
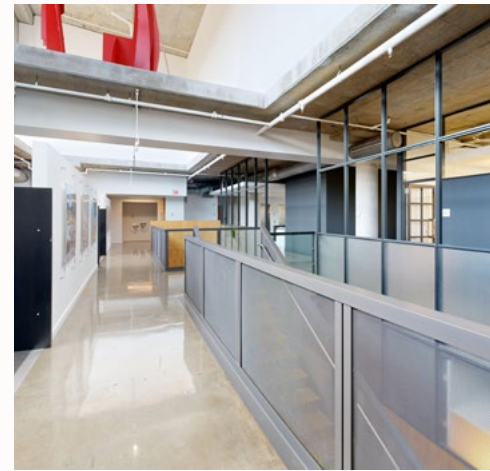
**Leasing Information:**  
Andy Dutcher +1 614 460 4403  
andrew.dutcher@jll.com  
Joey Lamb +1 614 460 4412  
joey.lamb@jll.com

# Fifth Floor

Suite 500  
5,873 SF



 Virtual Walkthrough



515 E Main Street  
Building owned and managed by  
**HEALTHCARE REALTY**

**Leasing Information:**  
Andy Dutcher +1 614 460 4403  
andrew.dutcher@jll.com  
Joey Lamb +1 614 460 4412  
joey.lamb@jll.com

 **515**  
**E MAIN**  
**STREET**

**Andy Dutcher**

D + 1 614 460 4403

M + 1 614 425 2959

[andrew.dutcher@jll.com](mailto:andrew.dutcher@jll.com)

**Joey Lamb**

D + 1 614 460 4412

M + 1 614 506 9147

[joey.lamb@jll.com](mailto:joey.lamb@jll.com)



Building owned and managed by  
**HEALTHCARE REALTY**

Although information has been obtained from sources deemed reliable, JLL does not make any guarantees, warranties or representations, express or implied, as to the completeness or accuracy as to the information contained herein. Any projections, opinions, assumptions or estimates used are for example only. There may be differences between projected and actual results, and those differences may be material. JLL does not accept any liability for any loss or damage suffered by any party resulting from reliance on this information. If the recipient of this information has signed a confidentiality agreement with JLL regarding this matter, this information is subject to the terms of that agreement. ©2025 Jones Lang LaSalle Brokerage, Inc. All rights reserved.