

FOR SALE

125+ ACRES FOR DEVELOPMENT

4943 SNOW HILL RD. SALISBURY, MD 21804

SALE PRICE \$4,250,000

ZREC Advisor Group
Coldwell Banker Realty
1131 S. Salisbury Blvd Ste B
Salisbury, MD 21801

Brandon Ziska

brandon.ziska@cbrealty.com

443.880.1273

Brian Swafford

brian.swafford@cbrealty.com

443.614.8983



**COLDWELL BANKER
COMMERCIAL**



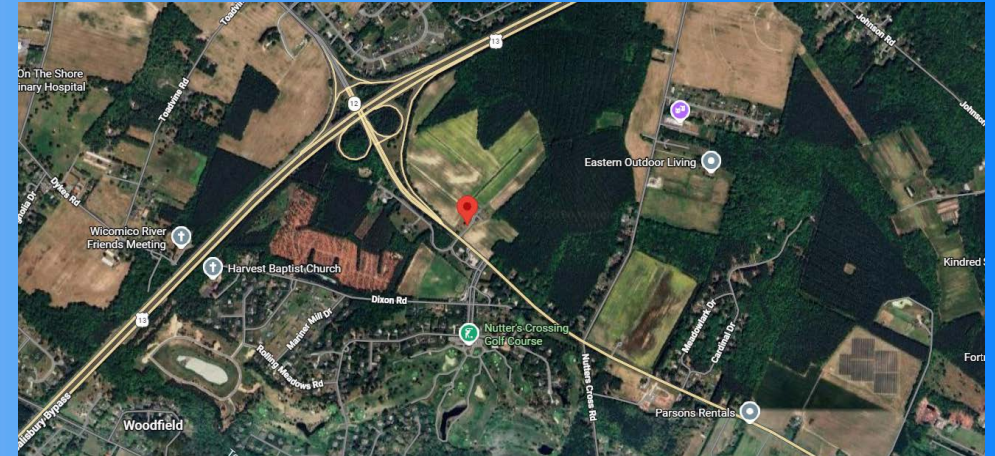
Affiliated real estate agents are independent contractor sales associates, not employees. The property information herein is derived from various sources that may include, but not be limited to, county records and the Multiple Listing Service, and it may include approximations. Although the information is believed to be accurate, it is not warranted and you should not rely upon it without personal verification. ©2022 Coldwell Banker. All Rights Reserved. Coldwell Banker and the Coldwell Banker logos are trademarks of Coldwell Banker Real Estate LLC. The Coldwell Banker® System is comprised of company owned offices which are owned by a subsidiary of Anywhere Advisors LLC and franchised offices which are independently owned and operated. The Coldwell Banker System fully supports the principles of the Fair Housing Act and the Equal Opportunity Act.



SALE

125+ ACRES FOR DEVELOPMENT

4943 SNOW HILL RD. SALISBURY, MD 21804



PROPERTY DESCRIPTION

Prime Development Opportunity!!! 125+ acres of cleared land zoned R20, which allows for low density residential development. Located just minutes from Tidal Health Peninsula Regional Hospital and Salisbury University, as well as only 30 miles from Ocean City. This property is situated in close proximity to the Rt.13 Salisbury Bypass which provides easy access to major shopping and dining districts throughout Salisbury and the Eastern Shore region. Surrounded by residential developments both completed and in progress.

OFFERING SUMMARY

Sale Price	\$4,250,000
Number of Buildings	4
Total Acreage	125.79
Zoning	R20

Brandon Ziska
443.880.1273

Brian Swafford
443.614.8983



**COLDWELL BANKER
COMMERCIAL
REALTY**

SALE

125+ ACRES FOR DEVELOPMENT
4943 SNOW HILL RD. SALISBURY, MD 21804



Brandon Ziska Brian Swafford
443.880.1273 443.614.8983



**COLDWELL BANKER
COMMERCIAL
REALTY**