

**STAGE**

10 Slingsby Place, The  
Yards, Covent Garden  
London WC2

1<sup>st</sup> Floor  
4,842 sq ft / 450 sq m  
Compressively refurbished workspace  
floor TO LET

PRIVATE WORKSPACE READY Q4 2026

---

FULLY FITTED AND FURNISHED

---

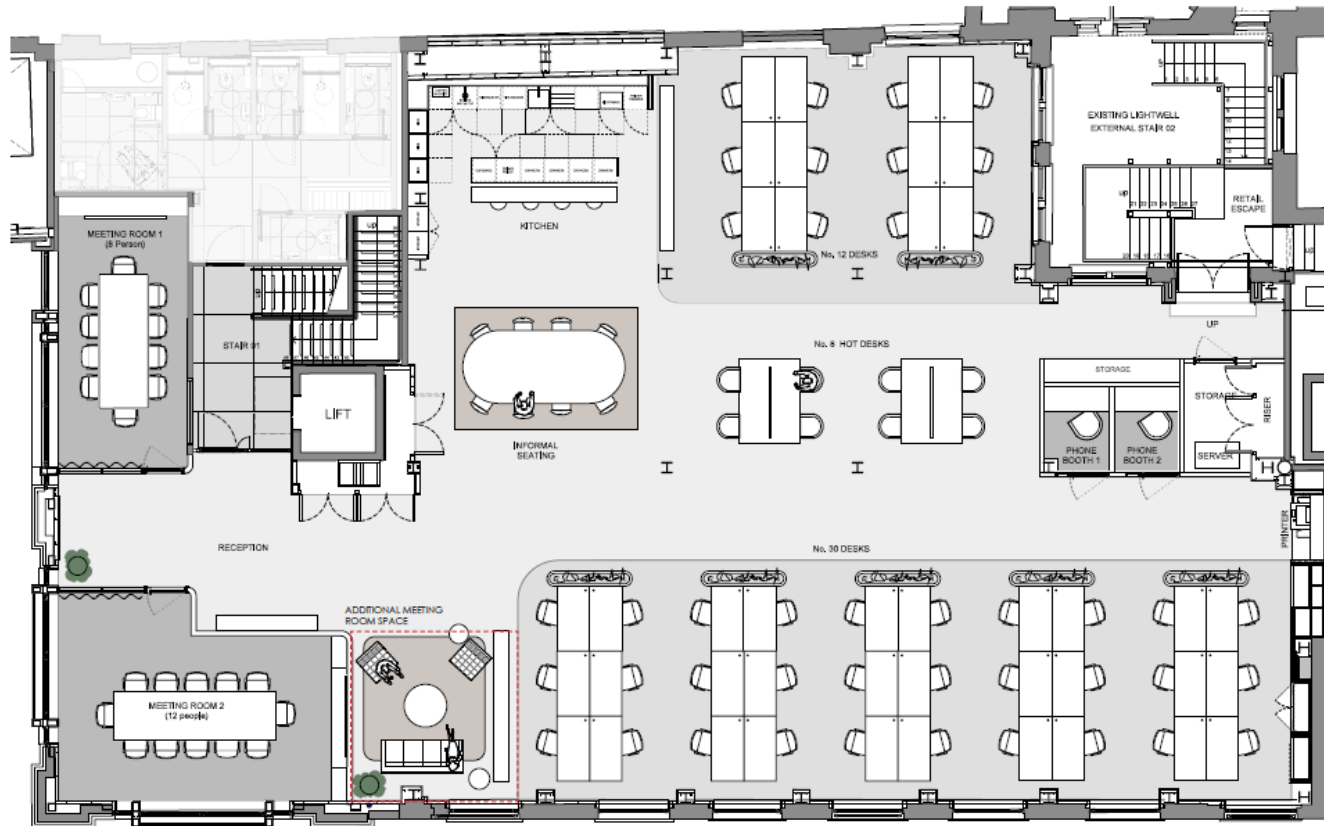
COURTYARD LOCATION AND ADDRESS

---



[stage-re.co.uk](https://stage-re.co.uk)

## 1st Floor – Space Plan



### Fit out amenities:

- x42 open plan workstations
- x12 person boardroom
- x10 person meeting room
- x2 4 person touchdown benches
- x2 phone booths
- Client arrival lounge
- Kitchenette
- Dining table
- Comms room
- Ability to create 3<sup>rd</sup> x6 person meeting room

# STAGE

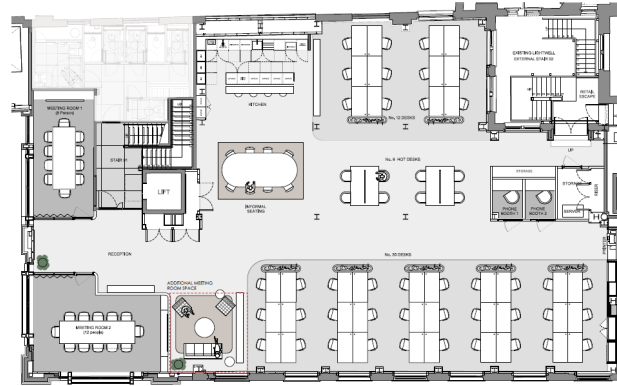


## Amenities

- Currently undergoing a comprehensive refurbishment and fit out
- x42 workstations, x2 meeting rooms and x2 phone booths
- New air conditioning and openable windows
- Exposed ceilings and M&E
- New LED lighting
- Refurbished WC's, showers and lockers
- BREEAM – Excellent (target)
- EPC – A (target)



## Floor Plan



## Floor Areas

Floor	Sq ft	Sq m	Workstations
1 <sup>st</sup> floor	4,842	450	42
<b>Total</b>	<b>4,842</b>	<b>450</b>	<b>42</b>

## Location & Connectivity



Google Maps



What Three Words



Covent Garden

2 mins



Leicester Square

2 mins



Tottenham Court Road

6 mins

## Outgoings

Guide Rent	Business Rates	Service Charge	Total
£110.00 psf	£36.11 psf	£17.20 psf	£163.31 psf

## Term

A new lease is available direct from the landlord on terms by arrangement.

Simon Lee: 07769745449  
simon@stage-re.co.uk



@stagerere



@stagerelondon

James Guyer: 07885770728  
james@stage-re.co.uk



@stage\_re\_spotlight