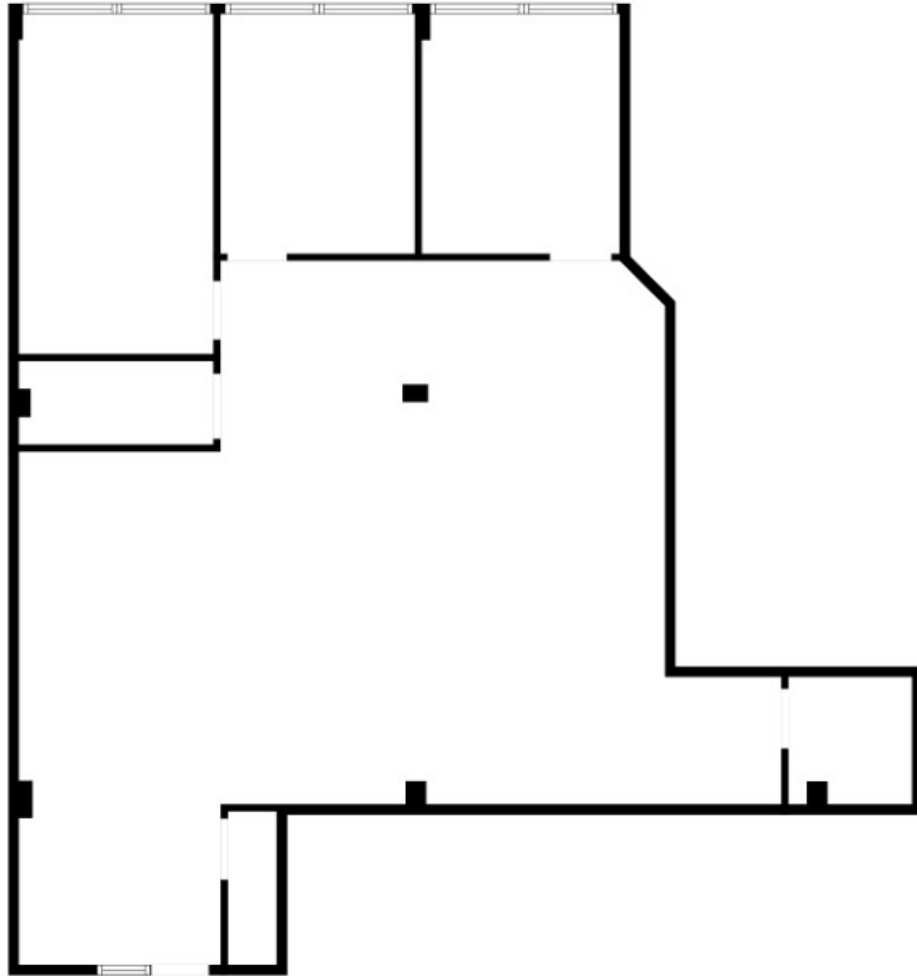


# SUITE 108 | 2,239 SF

Two Woodfield Lake | 1100 E Woodfield Rd \ Schaumburg, IL



## SPACE NOTES

- Asking Rate: \$19.50 PSF MG
- Class A Common Area Finishes
- Turn-Key Buildouts
- Conference Facility
- Renovated Tenant Lounge



**Ryan Moen, SIOR**  
630.480.6346  
[RMoen@VersaRES.com](mailto:RMoen@VersaRES.com)

**Steven Rea**  
630.468.1780  
[SRea@VersaRES.com](mailto:SRea@VersaRES.com)

**John Millner, CCIM**  
630.480.6342  
[JMillner@VersaRES.com](mailto:JMillner@VersaRES.com)

1 MID AMERICA PLAZA, 3RD FLOOR  
OAKBROOK TERRACE, IL 60181  
630.480.6413

EXCLUSIVELY LISTED BY

**VERSA**  
REAL ESTATE SERVICES