

# AVAILABLE FOR LEASE

2740 WASHINGTON BLVD.

BELLWOOD, IL



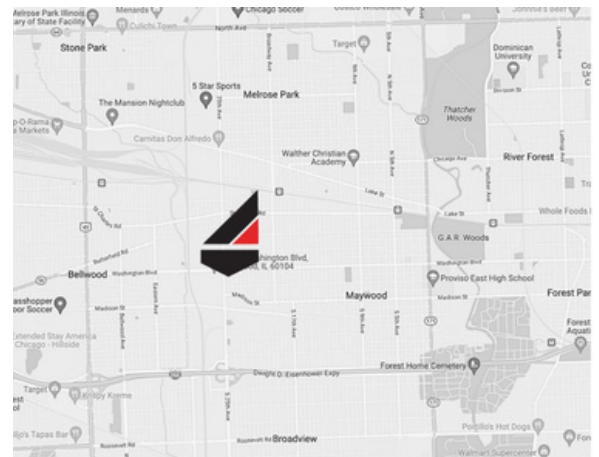
## PROPERTY SPECIFICATIONS

- **Building Size:** 52,769 SF
- **Available SF:** 30,396 SF
  - **Unit E:** 7,356 SF-Available Immediately
  - **Unit B:** 23,040 SF-Available July 1st
- **Ceiling Height:** 15'-28' Clear
- **Loading:** 2 Shared Common Docks
- **Lease Rate:** \$12.50/SF MG

## BUILDING HIGHLIGHTS

- Heavy Power
- Sprinklered
- Minutes from I-290, I-294

## LOCATION



Murray Karbin  
Designated Managing Broker  
C) 847-630-3906  
mkarbin@summitcommercialre.com

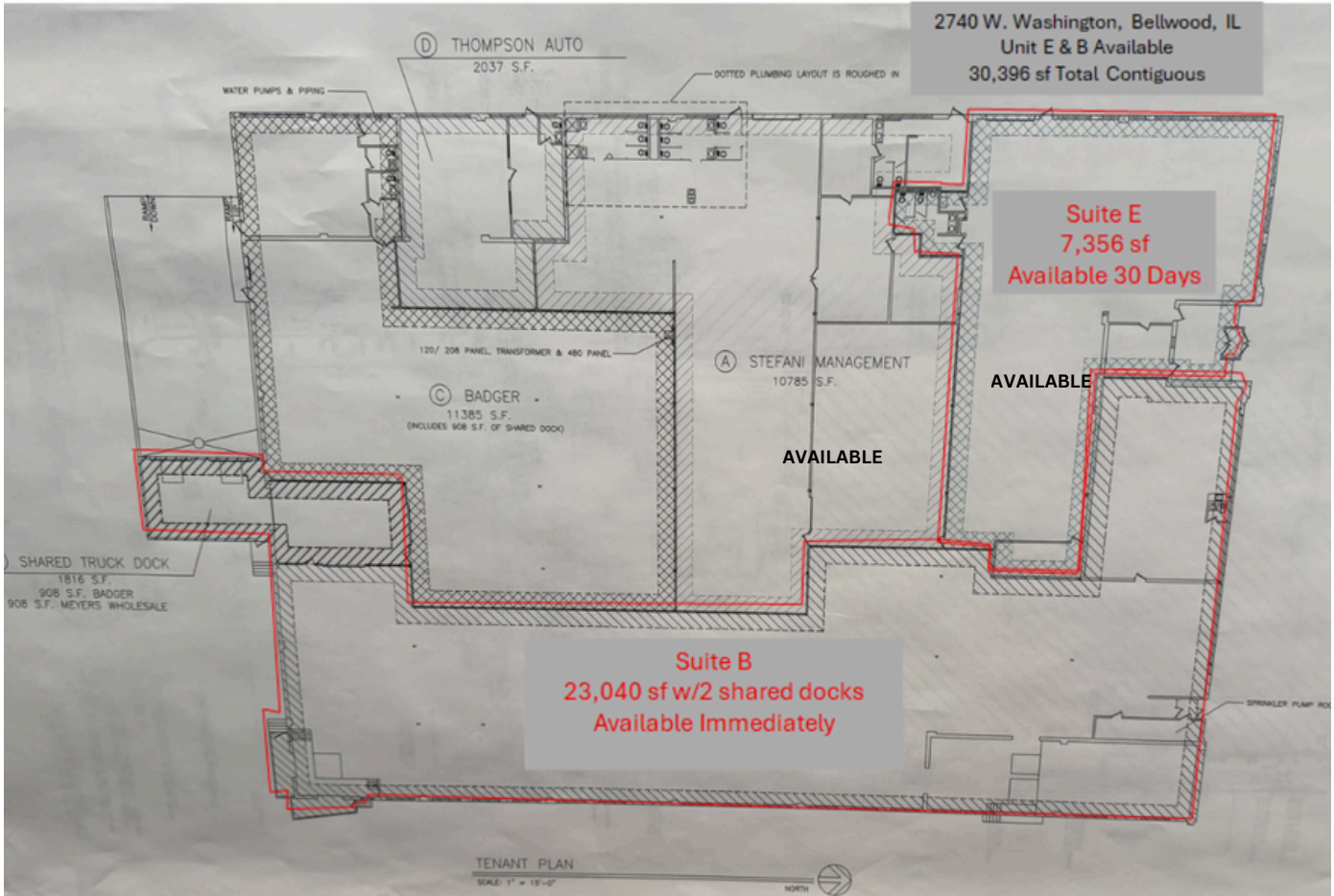


Sara Karbin Leonard  
Broker  
C) 224-595-8847  
sarak@summitcommercialre.com

[www.summitcommercialre.com](http://www.summitcommercialre.com)

# AVAILABLE FOR LEASE

2740 WASHINGTON BLVD.  
BELLWOOD, IL



**Murray Karbin**  
Designated Managing Broker  
C) 847-630-3906  
mkarbin@summitcommercialre.com



**Sara Karbin Leonard**  
Broker  
C) 224-595-8847  
sarak@summitcommercialre.com

[www.summitcommercialre.com](http://www.summitcommercialre.com)