

**MONTH
TO
MONTH
OPTION
AVAILABLE**

2345
MICHAEL FARADAY DRIVE
SUITE 8
SAN DIEGO, CA 92154



FOR SUBLEASE | 6,137 SF INDUSTRIAL SUITE

PROPERTY FEATURES

SUITE SIZE 6,137 SF

OFFICE % 25%

DOCK HIGH POSITIONS 2

GRADE LEVEL DOORS 1

CLEAR HEIGHT 18' - 24'

PARKING 0.92/1,000 SF

YEAR BUILT 1984

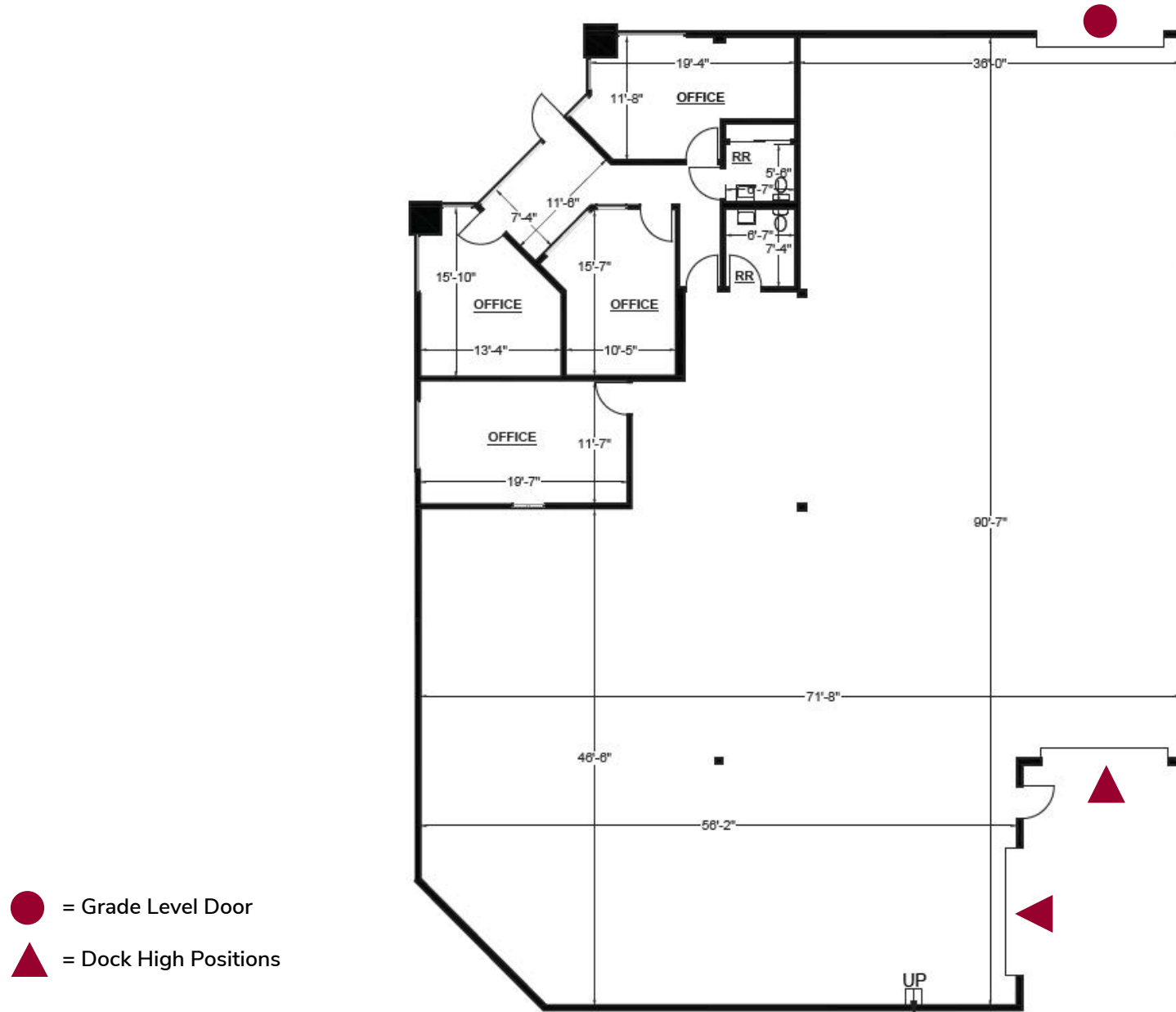
ZONING IL-2-1

SUBLEASE EXPIRATION 7/31/2028

SUBLEASE RATE | CONTACT BROKER

*Month to Month Option Available

FLOOR PLAN



SITE PLAN



CORPORATE NEIGHBORS



2345
MICHAEL FARADAY
DRIVE, SUITE 8

SAN DIEGO

POPULATION

3.33M

MEDIAN HOUSEHOLD
INCOME

\$79,646

UNEMPLOYMENT RATE

4.2%

San Diego County is one of the nation's most desirable places to live, well known for its amazing year round weather and 70 miles of coastline. The region is situated in southwestern California with the Pacific Ocean to the West, Los Angeles, Orange, and Riverside Counties to the North, and the Tijuana/Mexico border to the South. In 2018, over 35 million visitors were captivated by the region's luxurious hotels, sandy beaches, fine dining establishments, world renowned golf courses, and various top attractions.

2 Sports Teams

6 Universities

400 Parks & Beaches

100+ Attractions

6,000+ Restaurants

70° Average Temperature

115+ Breweries
& Growing!

70 Miles of
Coastline

75% Of The Year
Is Sunny

2345

MICHAEL FARADAY DRIVE

SUITE 8

SAN DIEGO, CA 92154

ANDREW KENNY

760.929.7841 | DRE# 02206475
akenny@lee-associates.com



Lee & Associates Commercial Real Estate Services, Inc. - NSDC | 1902 Wright Place, Suite 180, Carlsbad, CA 92008
P: (760) 929-9700 | F: (760) 929-9977 | www.lee-associates.com/sandiegonoorth | Corporate ID# 01096996

No warranty or representation is made to the accuracy of the foregoing information. Terms of sale or lease and availability are subject to change or withdrawal without notice.
Any of the foregoing information will need to be separately verified by Buyer.