


5353
W DARTMOUTH AVE
 DENVER · CO




OFFICE SPACE FOR LEASE

navpoint
 REAL ESTATE GROUP



MATT KULBE • PRINCIPAL
 O: 720.635.4591
matt.kulbe@navpointre.com



AVERY SPROUT • ASSOCIATE
 O: 720.391.4845
avery.sprout@navpointre.com

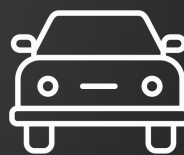
Suite	SF	Comments
LL50	2,464 RSF	Large Bullpen, 3 Offices, Large Storage and Large Conference *Contact Broker for Lower Level Lease Rate
200	7,855 RSF	7 Offices On Glass, Conference Room, Break-room, Storage Room, Private restrooms & Large Open Bullpen
203	298 RSF	1 Large Executive Corner Office
204	416 RSF	Reception + 1 Private Office (Both on Glass)
302	5,561 RSF	13 Offices (8 on Glass), Conference Room, Bullpen Areas, Large Kitchen/Break, Storage Room, IT Room & Reception. Double Glass Entry/Elevator Identity
506B	1,113 RSF	2 Offices on Glass, Reception & Conference Room
517	681 RSF	2 Large offices on Glass, Reception Area



TYPE:
OFFICE



LEASE RATE:
FROM \$21.00/SF/FSG*



PARKING RATIO:
2.49:1,000

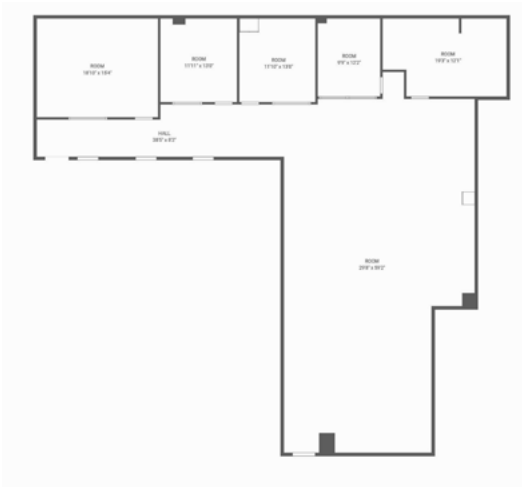


AVAILABLE UNITS:
7

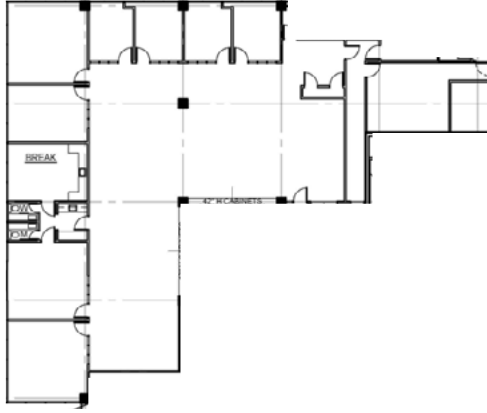
*Depending on Term, Tenant Improvements, etc.

FLOORPLANS

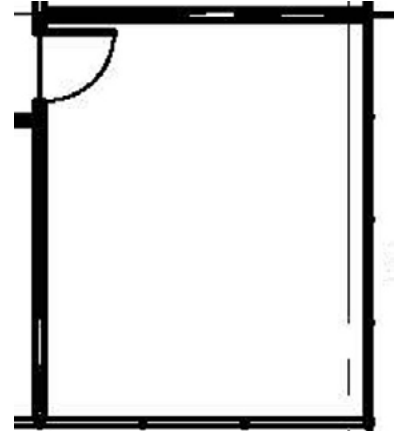
Suite LL50



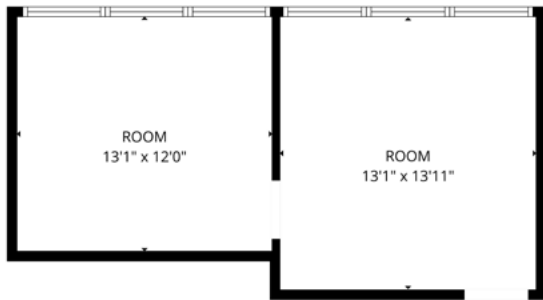
Suite 200



Suite 203



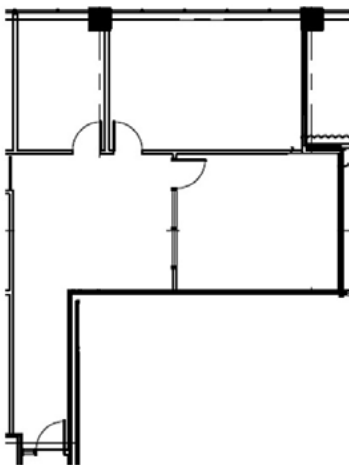
Suite 204



Suite 302



Suite 506B



Suite 517

