

RETAIL AND AUTO REPAIR/SERVICE OPPORTUNITY FOR SALE



1855 COUNTY STREET

Somerset, MA 02726

DAN FEINER

Vice President
401.751.3200 x3310
dan@mgcommercial.com

GEORGE PASKALIS, SIOR

Partner
401.751.3200 x3303
george@mgcommercial.com

MG COMMERCIAL

365 Eddy Street, Penthouse Suite
Providence, RI 02903
401.751.3200 | mgcommercial.com

EXECUTIVE SUMMARY



PROPERTY DESCRIPTION

1855 County Street is comprised of two (2) commercial buildings situated on a 31,559 SF (0.72 ac) parcel. The front building consists of a two-bay garage for auto repair/service with one office and a reception area for customers. It is situated close to the road with strong visibility. The building located in the rear is currently used for storage and could be converted to a spray booth. Additionally, the site consists of outside yard space for sales and storage.

PROPERTY HIGHLIGHTS

- (2) Commercial Buildings
- Situated on 31,559 SF of Land
- Ample Outside Storage Space
- Highly Visible Location/Signage
- Ideal Auto Repair/Service Site
- Highly Travelled Commercial Corridor

LOCATION DESCRIPTION

The subject property is well located on the highly visible County Street (RT 138) at the intersection of Marble Street and is only 15 minutes from Fall River and the Swansea Mall. County Street is a core retail and commercial corridor within Somerset, MA, with a traffic count of over 9,200 cars per day. The property has over 300 feet of frontage and is ideal for its current use or for redevelopment.

OFFERING SUMMARY

Sale Price:	\$995,000
Building Size:	3,000 SF
Lot Size:	31,559 SF
Zoning:	C

DEMOGRAPHICS	2 MILES	3 MILES	5 MILES
Total Households	8,603	15,858	46,630
Total Population	21,321	38,804	109,942
Average HH Income	\$113,256	\$109,586	\$89,794

DAN FEINER
 Vice President
 401.751.3200 x3310
 dan@mgcommercial.com

GEORGE PASKALIS, SIOR
 Partner
 401.751.3200 x3303
 george@mgcommercial.com

 365 Eddy Street, Penthouse Suite
 Providence, RI 02903
 mgcommercial.com



ADDITIONAL PHOTOS



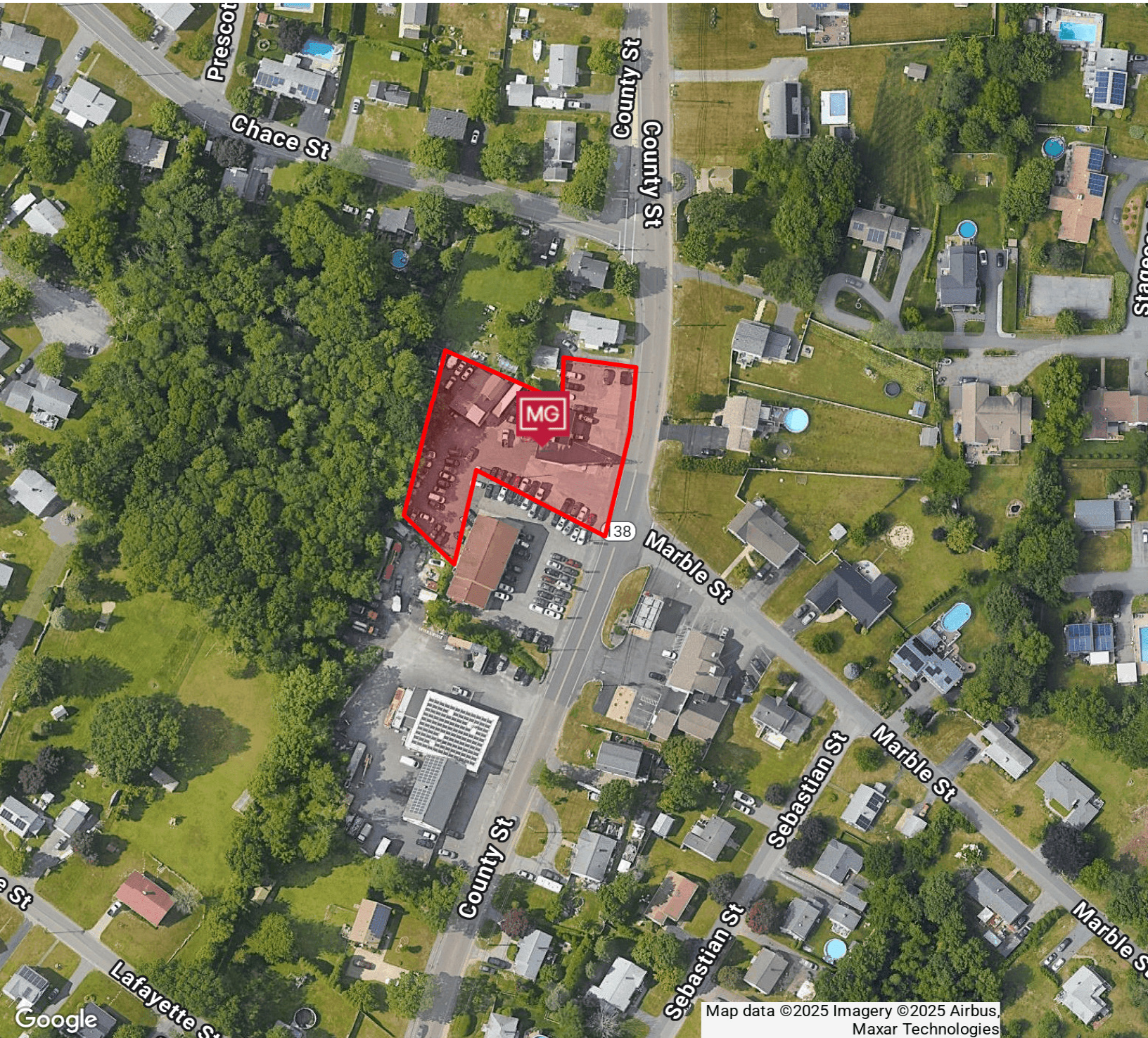
DAN FEINER
Vice President
401.751.3200 x3310
dan@mgcommercial.com

GEORGE PASKALIS, SIOR
Partner
401.751.3200 x3303
george@mgcommercial.com

365 Eddy Street, Penthouse Suite
Providence, RI 02903
mgcommercial.com



AREA MAP



DAN FEINER
Vice President
401.751.3200 x3310
dan@mgcommercial.com

GEORGE PASKALIS, SIOR
Partner
401.751.3200 x3303
george@mgcommercial.com

365 Eddy Street, Penthouse Suite
Providence, RI 02903
mgcommercial.com

