



For Lease

2nd Floor Medical Office

Andrew Robbins

Senior Associate
+1 857 366 1891
andrew.robbs@colliers.com

Hugo F. Overdeput, CCIM

Vice President
+1 603 560 2764
hugo.overdeput@colliers.com

Property owned & managed by



175 Canal Street, Suite 401
Manchester, NH 03101
+1 603 623 0100
colliersnh.com

31 Stiles Road Salem, NH

Property Highlights

- Medical office space is available for lease
- 2,590± SF suite is on the 2nd floor
- Join tenants such as Beth Israel Lahey Health, Optima Dermatology, Parkland Urgent Care, Salem Radiology, and Lahey Oncology and Hematology
- Excellent location off Exit 2, I-93, at the lighted intersection of Stiles and Pelham Roads in the Salem professional hub

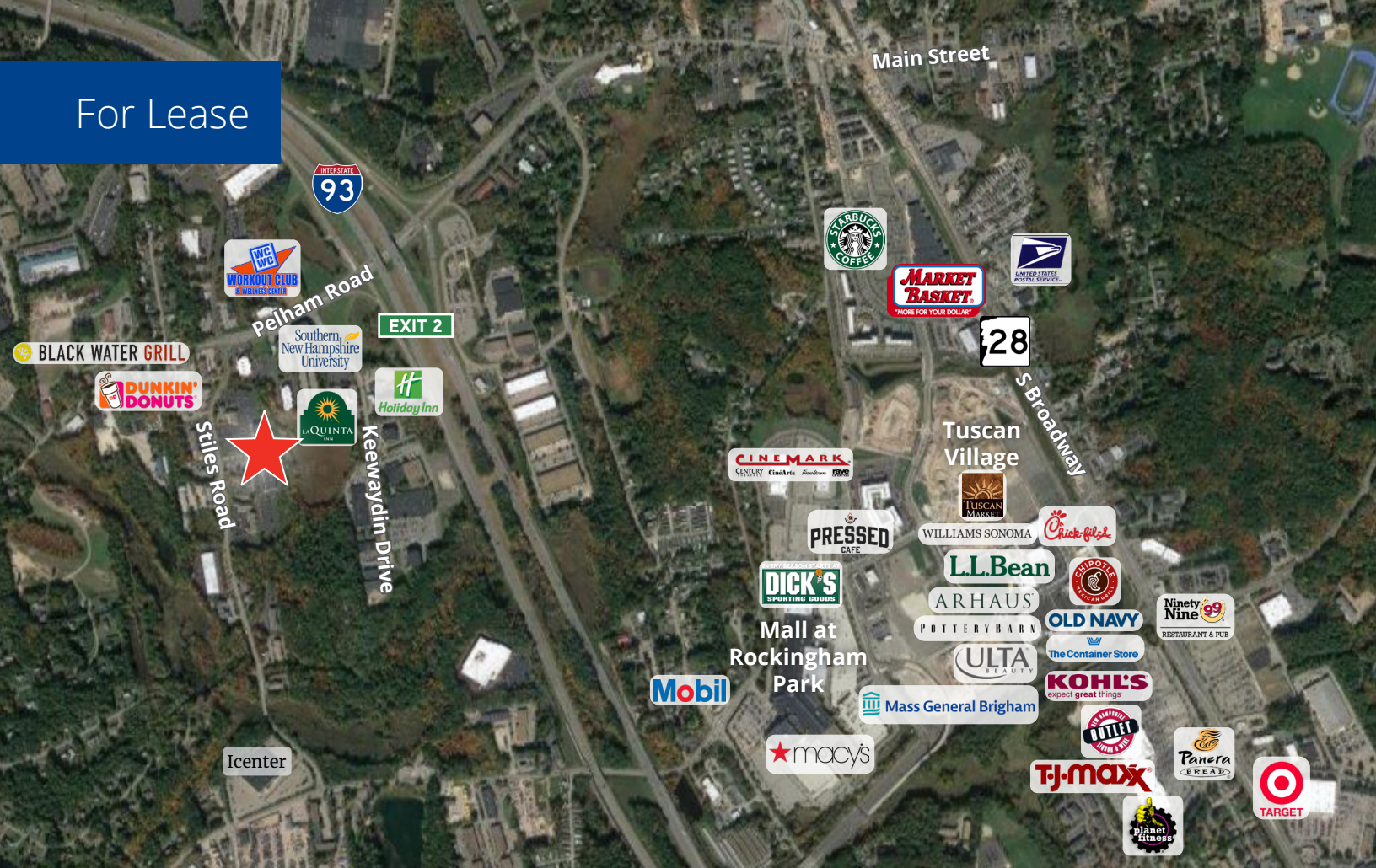


Scan or click here

for detailed suite floor plans and virtual tours

Information herein has been obtained from sources deemed reliable, however its accuracy cannot be guaranteed by Colliers International | New Hampshire & Maine. The user is required to conduct their own due diligence and verification. Colliers International | New Hampshire & Maine is independently owned and operated.

For Lease



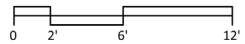
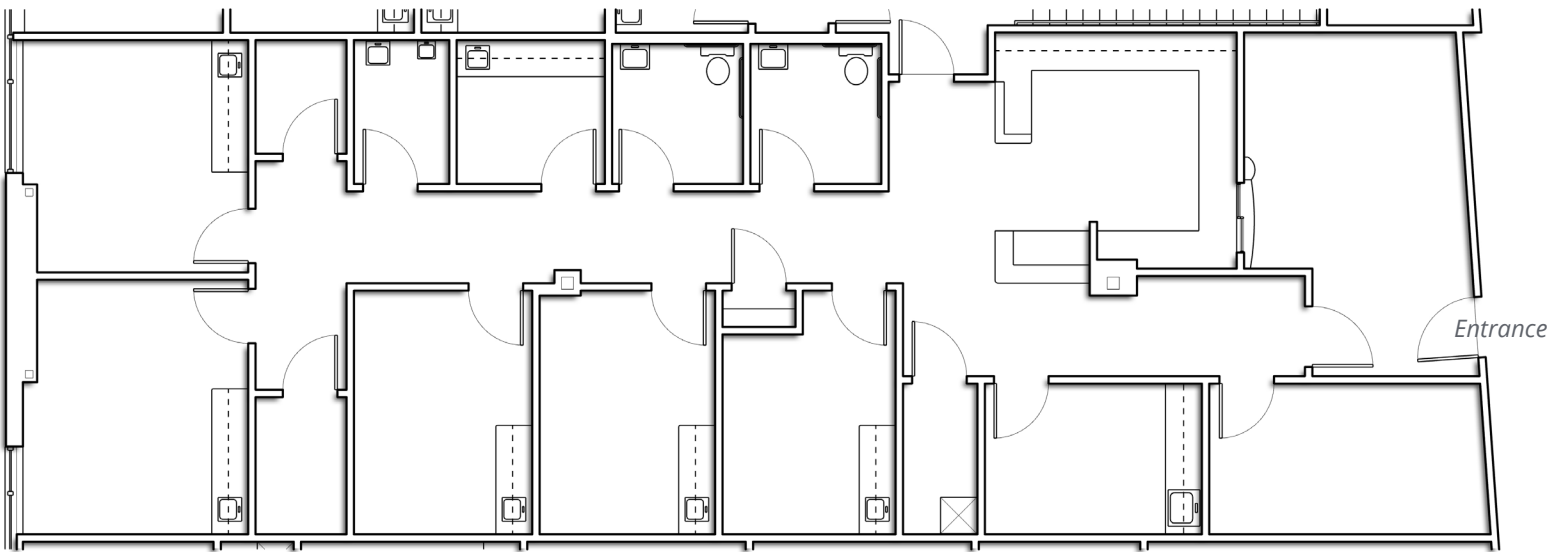
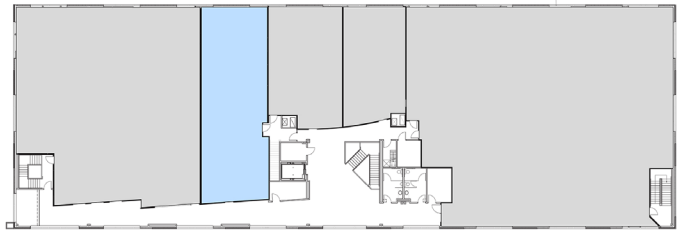
Specifications

Address:	31 Stiles Road
Location:	Salem, NH 03079
Building Type:	Medical
Year Built:	2013
Total Building SF:	50,456±
Available SF:	Suite 2200: 2,590±
Utilities:	Public water & sewer Forced hot air
Zoning:	Commercial
Parking:	75 on-site
Elevator:	Yes
2025 NNN Expenses:	\$12.95 PSF
Lease Rate:	Call Broker for details



Colliers | 175 Canal Street, Suite 401, Manchester, NH 03101
+1 603 623 0100 | colliersnh.com

Suite 2200 Floor Plan



EXISTING PLAN

SUITE 2200
07.11.23

HCA NEW HAMPSHIRE
31 STILES ROAD
SALEM, NH 03079

NOTE: THIS INFORMATION IS CONCEPTUAL IN NATURE AND IS SUBJECT TO ADJUSTMENTS PENDING FURTHER VERIFICATION AND CLIENT, TENANT, AND GOVERNMENTAL AGENCY APPROVALS. NO WARRANTIES OR GUARANTIES OF ANY KIND ARE GIVEN OR IMPLIED BY WELLTOWER.

WELLTOWER
550 HERITAGE DR. #200
JUPITER FL 33458
561.626.1800

