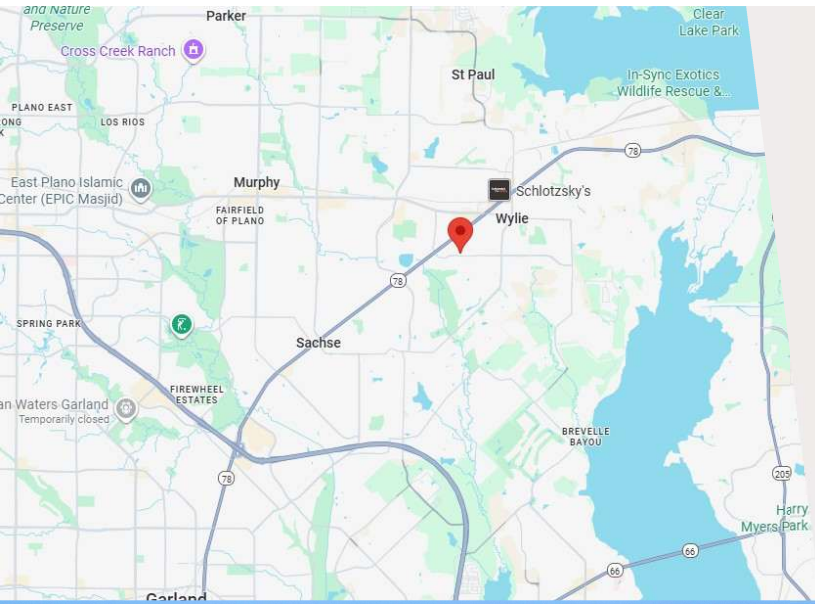




101 KRISTEN COURT  
WYLIE, TX 75098

*FOR LEASE:  
1,800 SF – 4,300 SF*



# *PROPERTY INFORMATION:*

Address: 101 Kristen Ct, Wylie, TX 75098

Available: 1,800 – 4,300 sqft

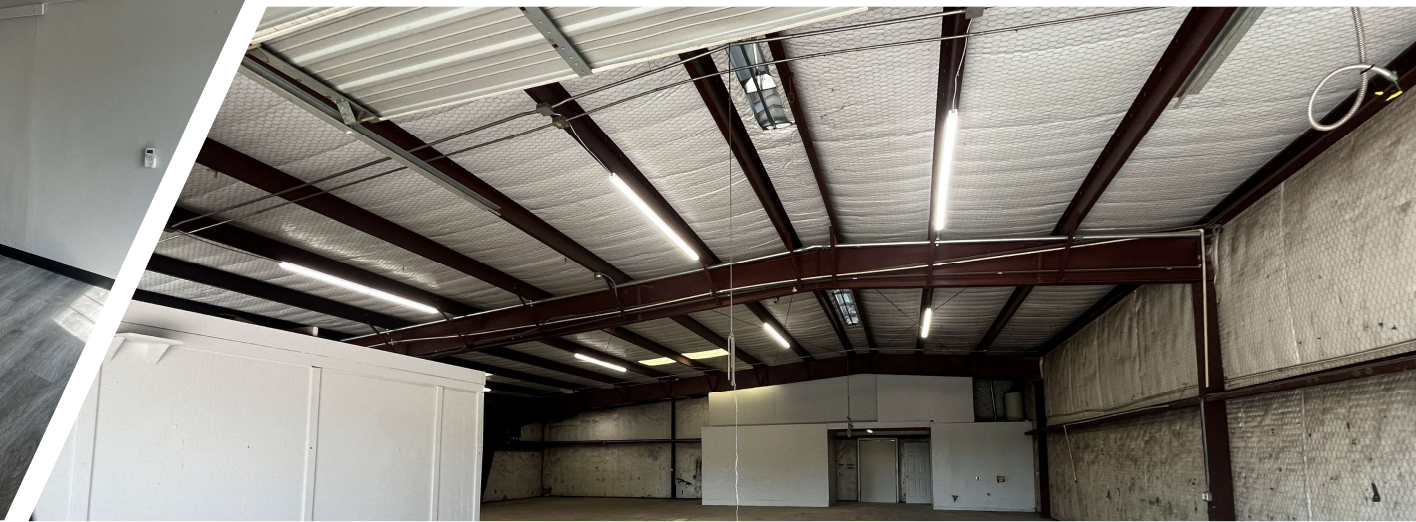
Rate: \$12-\$14/ft NNN

NNN: \$3.26/ft

---

## Highlights:

- Grade-Level Doors
- 3 Phase Power
- Renovated Offices
- Easy Access to Highways
- Ampel Parking





# CONTACT

Alexander Montano



[amontano@amarco.com](mailto:amontano@amarco.com)



(469) 310-1461 office



(682) 261-5765 cell