



FOR LEASE
±3,000 - 20,300 SF

THE PARK AT FOWLER CROSSING

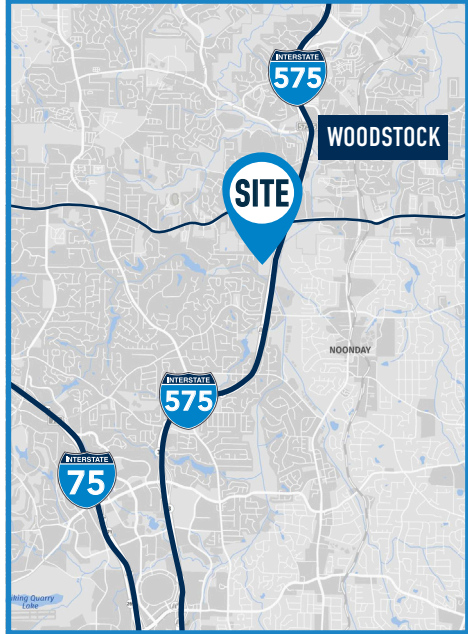
585 - 665 Molly Lane

Office Space
Woodstock, GA
30189




OVERVIEW:

- » Collection of 8 single-story buildings across 40-acre office park
- » Divisible and combinable suites ranging in size from ±3,000 SF to ±20,300 SF
- » Ample parking
- » Immediate access to I-575
- » Brick and glass construction
- » Developed by Fowler Properties
- » Office park surrounded by 9-hole, par-3 golf course with lighted driving range
- » Surrounded by national retailers like the Microtel Hotel, TacoMac, Schlotzky's Deli, Wells Fargo, BJ's Wholesale, IHOP, Target, Kohl's, Steak & Shake, Home Depot, Planet Fitness, Lowe's, and many more



Jake Parker
770.891.6429
jparker@skcr.com

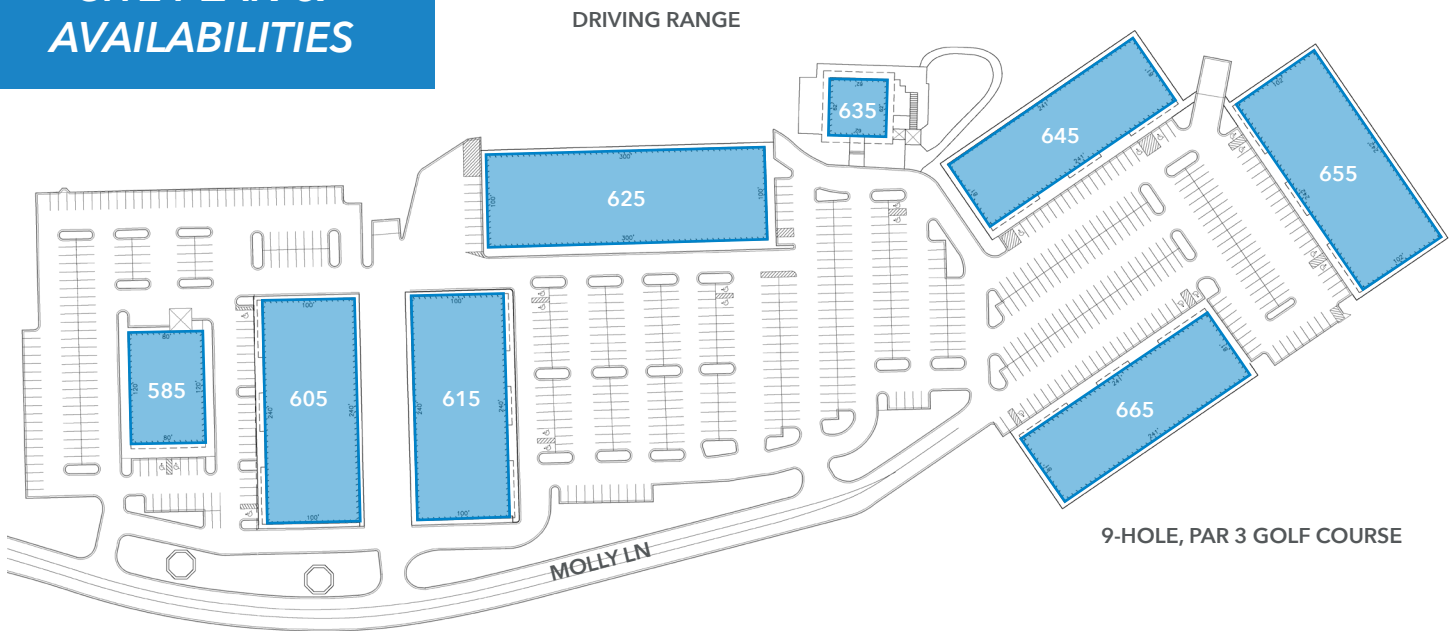
Chris Little
770.380.8270
clittle@skcr.com

Furman Wood
404.803.8412
fwood@skcr.com

THE PARK AT FOWLER CROSSING

585 - 665 Molly Lane

SITE PLAN & AVAILABILITIES



AVAILABILITIES:

625 Molly Lane

- » **Suite 120:** 6,000 SF
52 cubicles
Furnished training room, conference room
- » **Suite 130:** 2,929 SF
Open reception area, bullpen
7 private offices

655 Molly Lane

- » **Suite 110:** 10,106 SF
- » **Suite 140:** 4,625 SF
- » **Suite 150:** 5,583 SF
- » **Suite 110 - 150:** 20,314 SF

645 Molly Lane

- » **Suite 130:** 3,323 SF

Jake Parker
770.891.6429
jparker@skcr.com

Chris Little
770.380.8270
clittle@skcr.com

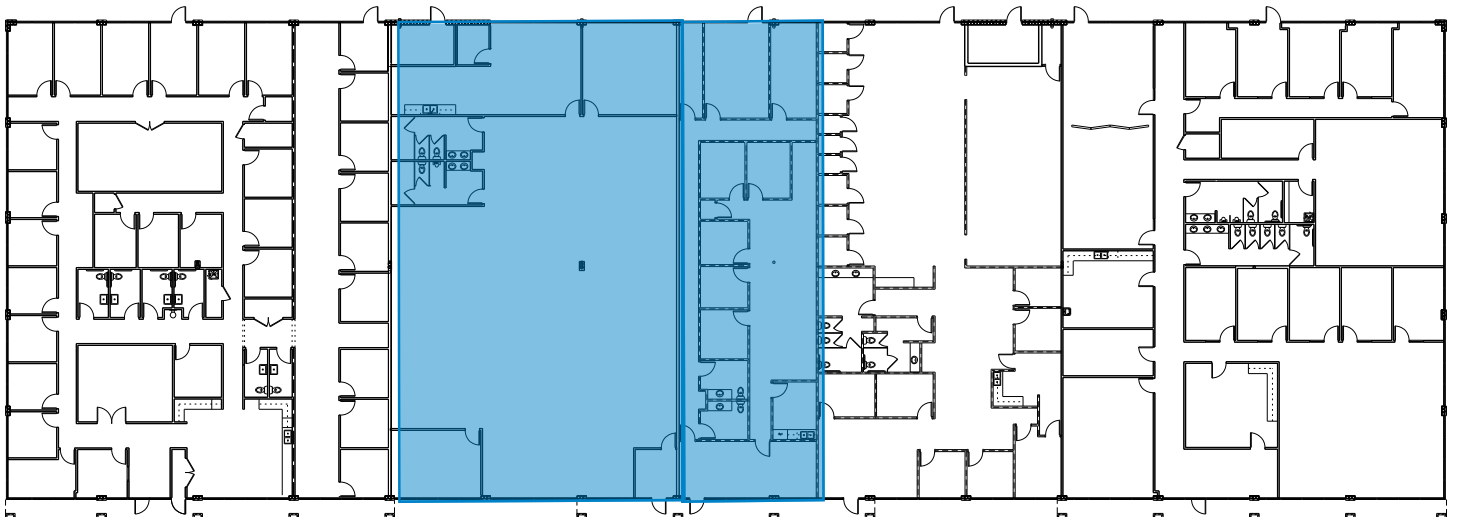
Furman Wood
404.803.8412
fwood@skcr.com



THE PARK AT FOWLER CROSSING

625 Molly Lane

SUITES 120 - 140
2,929 SF - 13,904 SF



Suite 120
6,000 SF

Suite 130
2,929 SF

Jake Parker
770.891.6429
jparker@skcr.com

Chris Little
770.380.8270
clittle@skcr.com

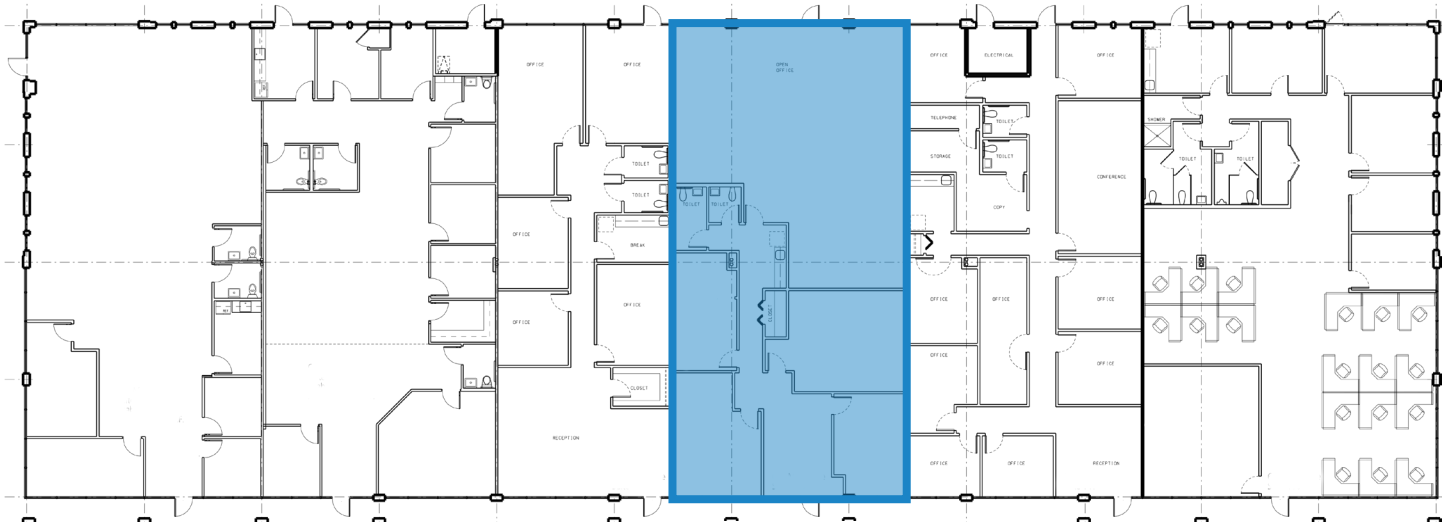
Furman Wood
404.803.8412
fwood@skcr.com



THE PARK AT FOWLER CROSSING

645 Molly Lane

SUITE 130
3,323 SF



Suite 130
3,323 SF

Jake Parker
770.891.6429
jparker@skcr.com

Chris Little
770.380.8270
clittle@skcr.com

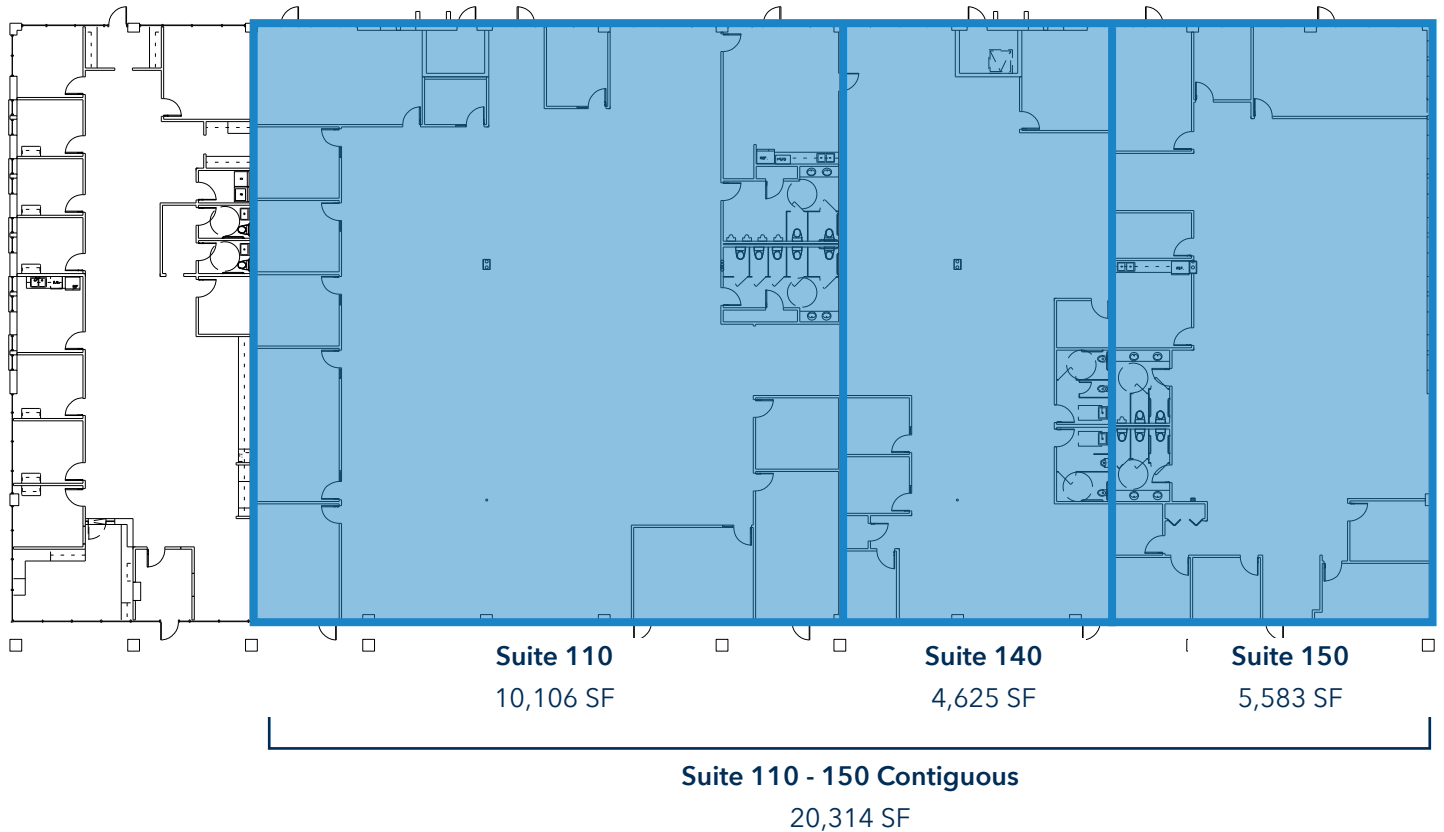
Furman Wood
404.803.8412
fwood@skcr.com



THE PARK AT FOWLER CROSSING

655 Molly Lane

SUITES 110 - 150
4,625 SF - 20,314 SF



Jake Parker
770.891.6429
jparker@skcr.com

Chris Little
770.380.8270
clittle@skcr.com

Furman Wood
404.803.8412
fwood@skcr.com



THE PARK AT FOWLER CROSSING

585 - 665 Molly Lane

NEARBY AMENITIES



RESTAURANTS

- A Chicken Salad Chick
- B Taco Mac
- C Steak n Shake
- D Starbucks
- E Hacienda Cantina
- F Schlotzskys
Smoothie King
- G IHOP
- H Caribou Coffee
- I Waffle House
Starbucks
- J Arby's
- K Chick-fil-A
Whataburger
- L Dunkin Donuts
- M Moes Southwest Grill
Firehouse Subs
- N Raising Cane's
- O McDonalds
- P Subway
- Q Chipotle Mexican Grill
- R Popeyes
Krispy Kreme

SERVICES

- 1 CVS Pharmacy
- 2 Aylo Health
- 3 Home Depot
AT&T
- 4 Delta Community Credit Union
- 5 Kohl's
- 6 Planet Fitness
- 7 Lowes
- 8 Fedex- Office Store
- 9 Verizon
- 10 Quicktrip
- 11 Hennessy Honda of Woodstock
- 12 Cherokee Golf Center
- 13 Peachtree Immediate Care
- 14 **Woodstock Commons**
- Goodwill
- Firestone Service Center
- 15 **St. Thomas Square**
- Impact PT
- Superior Stair
- Honey Bee Salon & Spa
- Top Notch Appliance

HOTEL

- I Microtel Hotel
- II Fairfield Inn & Suites
- III In-Town Suites
- IV Hampton Inn
- V Comfort Suites

GROCERY

- 1 Target
- 2 BJ's Wholesale
- 3 Sam's Club

Jake Parker
770.891.6429
jparker@skcr.com

Chris Little
770.380.8270
clittle@skcr.com

Furman Wood
404.803.8412
fwood@skcr.com

