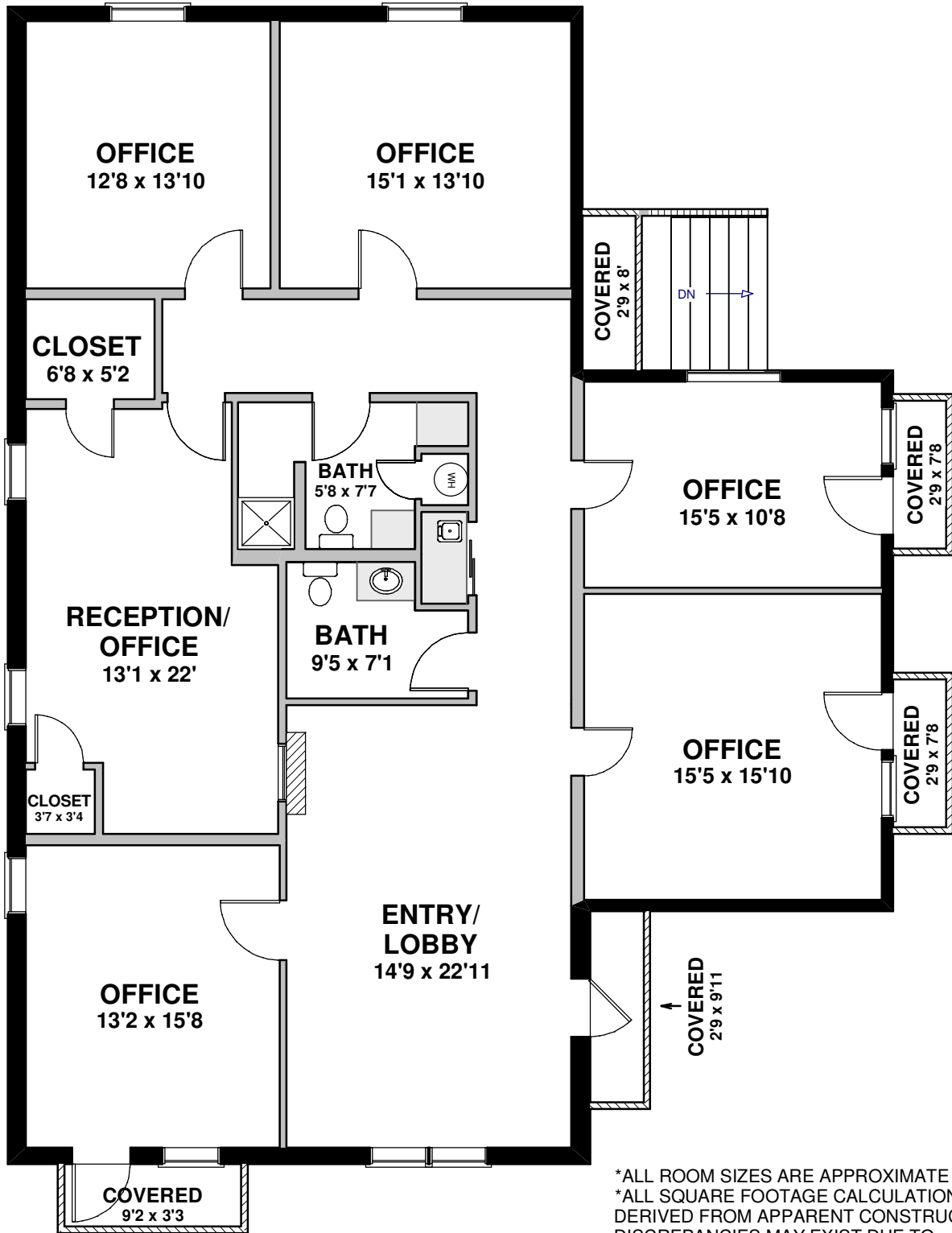


Presented By:
Quintessential Properties LLC
 Sarah McGarvey
 (505) 907-8256

1709 Girard Blvd NE
Albuquerque, NM 87106



*ALL ROOM SIZES ARE APPROXIMATE
 *ALL SQUARE FOOTAGE CALCULATIONS WERE DERIVED FROM APPARENT CONSTRUCTION; DISCREPANCIES MAY EXIST DUE TO MEASUREMENT VARIATIONS
 Preparer is not an appraiser and is not liable for discrepancies w/appraisal calculations. This plan is diagrammatic & its only purpose is to provide a basic layout of the building.
 This drawing may not be copied or reproduced in anyway without written permission from AMB Floorplans, LLC.