

1008 Reisterstown Road

Retail Space For Lease

1008 Reisterstown Road | Pikesville | MD 21208

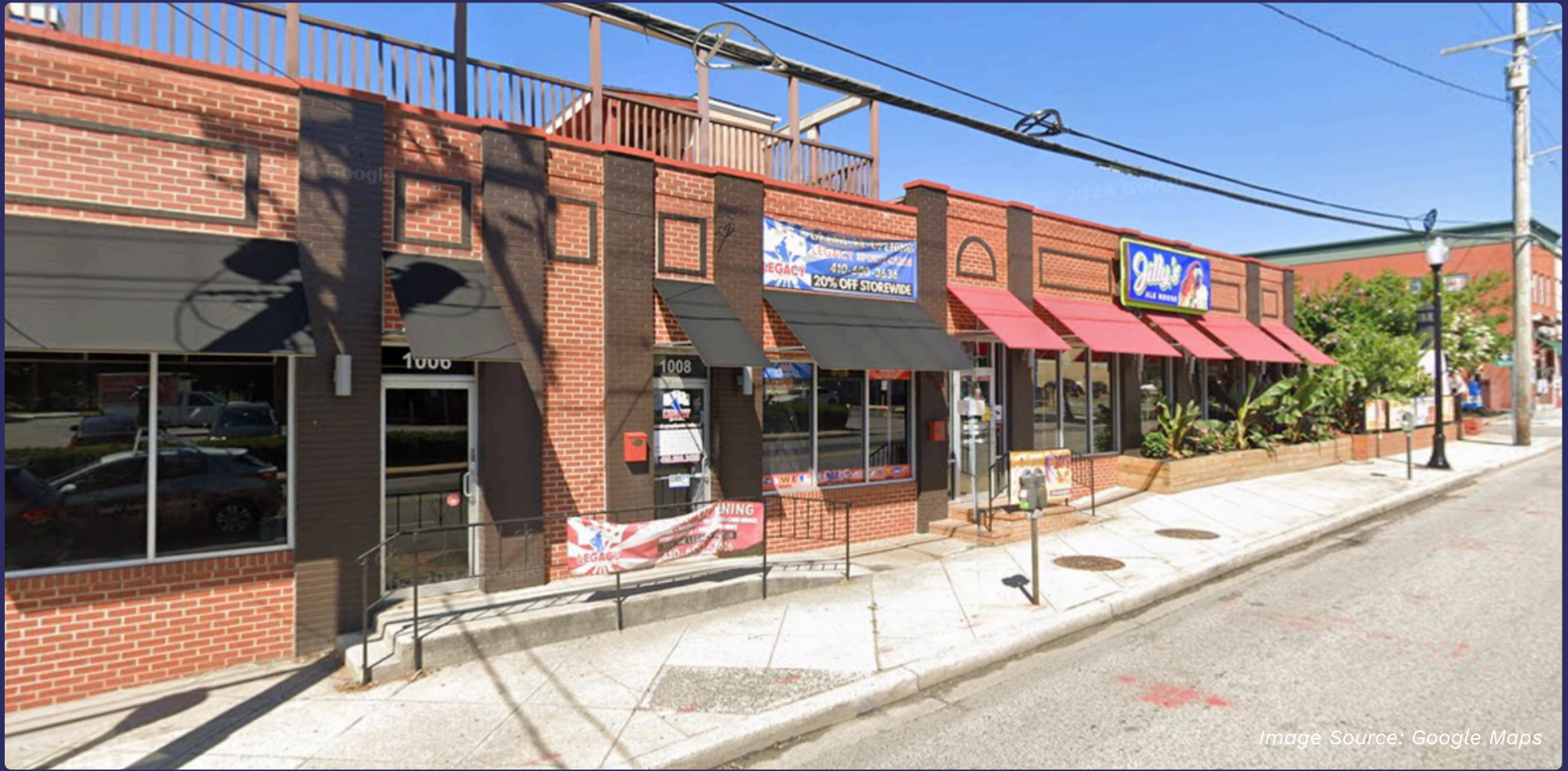


Image Source: Google Maps

Overview

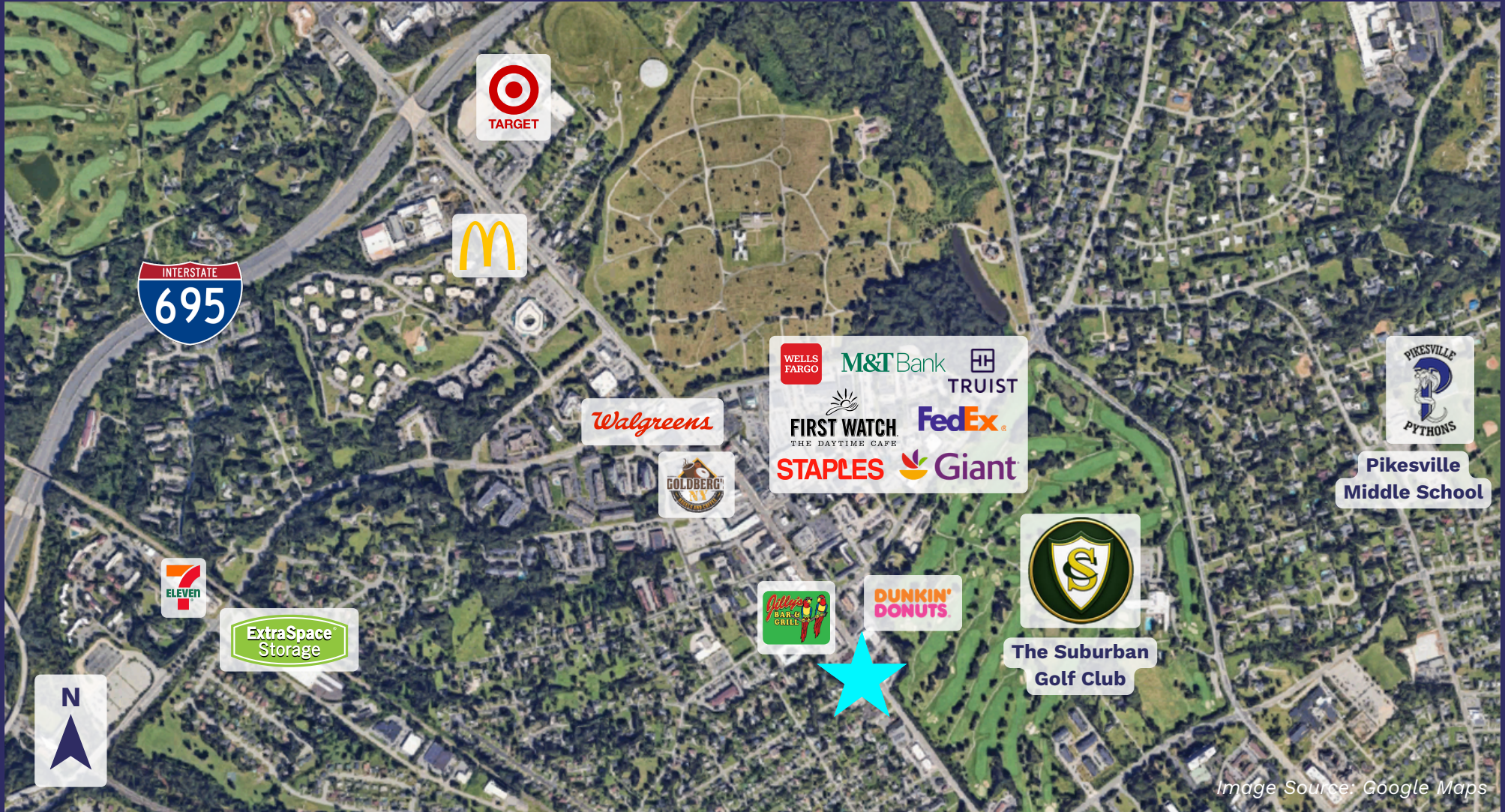
1008 Reisterstown Road is a recently renovated 1,400 SF retail storefront. The space is adjacent to Jilly's and is offered at \$2,950 per month as a modified gross lease. The tenant is responsible for utilities, interior cleaning, and their share of snow and ice removal. The property is surrounded by notable residential communities in Pikesville, including Stevenson, Ralston, Sudbrook Park, and Bare Hills, and is adjacent to Mount Washington, Randallstown, and Owings Mills. The property enjoys easy access to I-695, I-795, I-83 Reisterstown Road, Stevenson Road, and Park Heights Avenue

Highlights

- 1,400 SF retail storefront
- Three (3) year minimum term
- Recently renovated interior
- Adjacent to Jilly's
- MG lease – tenant responsible for utilities, interior cleaning, and its share of snow and ice removal
- Ample retail parking
- Reisterstown Road ADT 23,225
- Access to I-695 & I-83



Retail Map





TROUT DANIEL & ASSOCIATES

BUY. SELL. LEASE. ADVISE.

Steven Cornblatt

Principal

📞 O: 443.921.9331

✉️ scornblatt@troutdaniel.com

Coleman Tirone

Associate

📞 O: 443.921.9328

✉️ ctirone@troutdaniel.com

Contact Us

📍 **30 E. Padonia Road, Suite 504**
Timonium, MD 21093

🌐 **Visit Us**
troutdaniel.com

📞 **Call Us**
410.435 .4004

The information contained in this marketing brochure has been obtained from sources we believe to be reliable; however, Trout Daniel & Associates LLC has not verified, and will not verify any of the information contained herein, nor has Trout Daniel & Associates LLC conducted any investigation regarding these matters and makes no warranty or representation whatsoever regarding the accuracy or completeness of the information provided. An agent indicated by an asterisk (*) has a direct or indirect ownership interest in this property.