



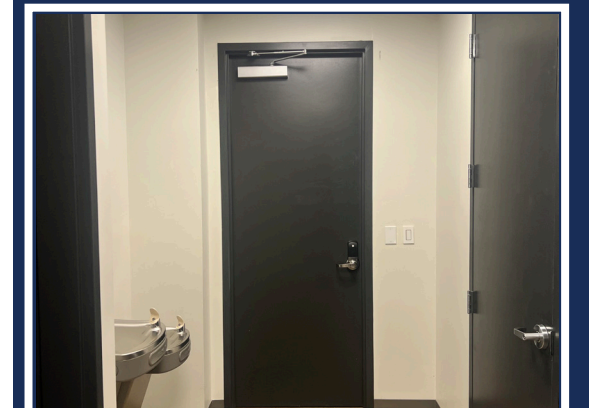
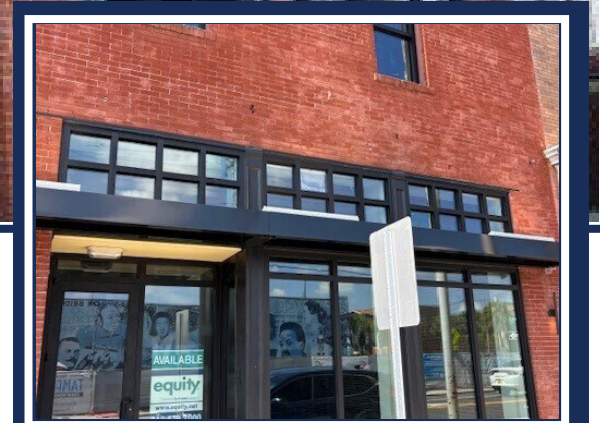
FOR LEASE

Retail/Office Space

2144 W Main St. Tampa, FL 33607

Property Highlights:

- 1,486 SF Available
- Ground floor suite with immediate access
- Delivered in shell-condition with an allowance provided
- Conveniently located off I-275 and Howard Ave.
- Minutes from Tampa Airport, Downtown, Westshore District, South Tampa, and Midtown
- Close proximity to restaurants and shops





Area Demographics

2025 Est.	1 Mile	3 Miles	5 Miles
Population	19,336	137,099	269,276
Avg. HH Income	\$62,783	\$83,818	\$77,600
Employees	11,899	170,952	243,151

Local Traffic



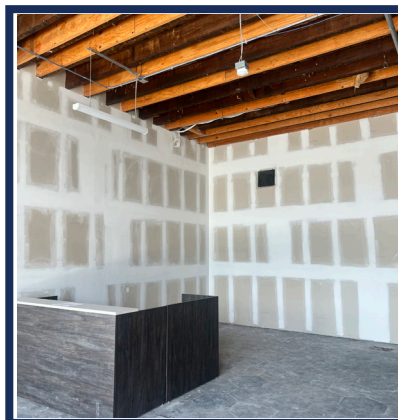
10,888

Vehicles Per Day
on Howard Ave.

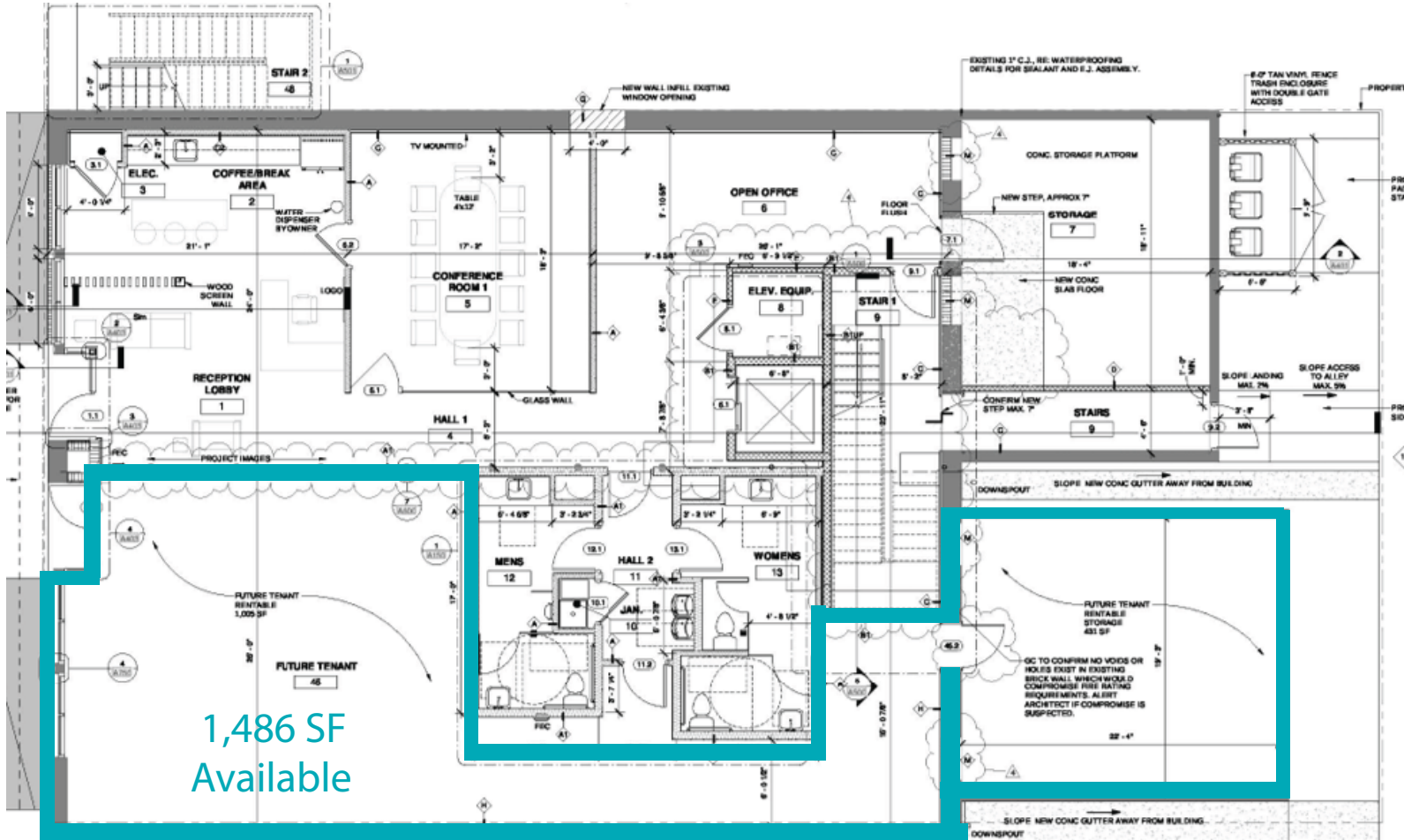


104,884

Vehicles Per Day
on I-275



Site Plan



Local Aerial

