



4675 Walnut Rd

Buckeye Lake, OH 43008



Offering Summary

Lease Rate:	\$13.50 SF/yr (Gross)
Building Size:	10,050 SF
Available SF:	2,500 SF
Lot Size:	3.26 Acres
Number of Units:	9
Year Built:	2001
Zoning:	GB
APN:	074-335652-00.028

Property Overview

Discover a versatile 2,500 SF leasing opportunity in a bustling strip center with strong visibility and recent capital improvements. The plaza has recently received a new roof and upgraded glass retail storefronts, enhancing curb appeal and exposure. This open floor plan offers flexibility for a variety of business layouts and includes two handicap accessible restrooms for added convenience. Ideal for retail or service-based users, the space is well positioned among a strong mix of tenants. With high-traffic exposure and recent updates, this property presents an exceptional opportunity for your business to grow and succeed.

Location Overview

Experience the charm of Buckeye Lake, Ohio. Nestled in a vibrant community, this property offers proximity to popular restaurants, boutique shops, and recreational attractions. Enjoy the serene lake views while remaining conveniently close to the area's dynamic commercial center.





4675 Walnut Rd

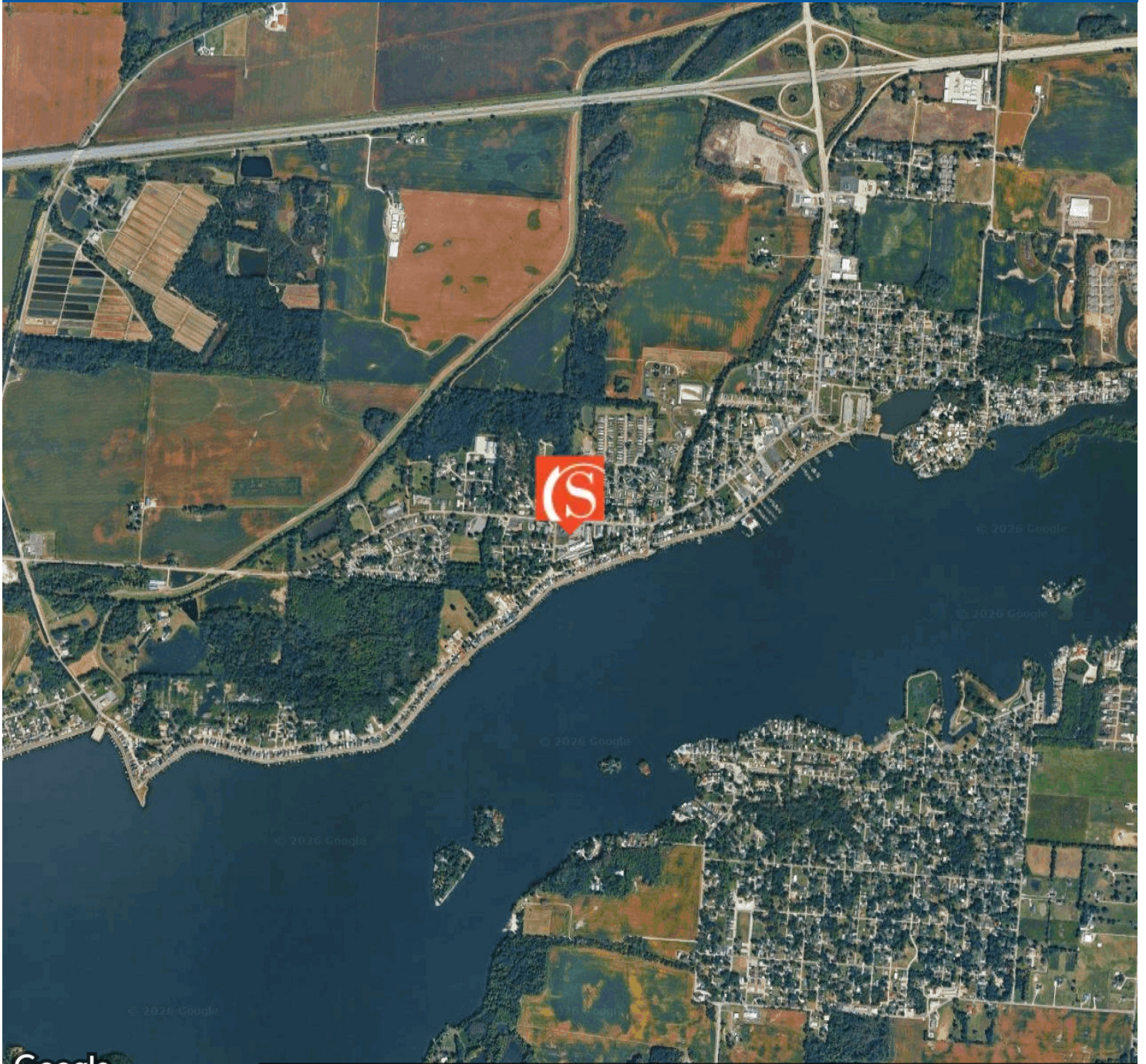
Buckeye Lake, OH 43008





4675 Walnut Rd

Buckeye Lake, OH 43008



Google

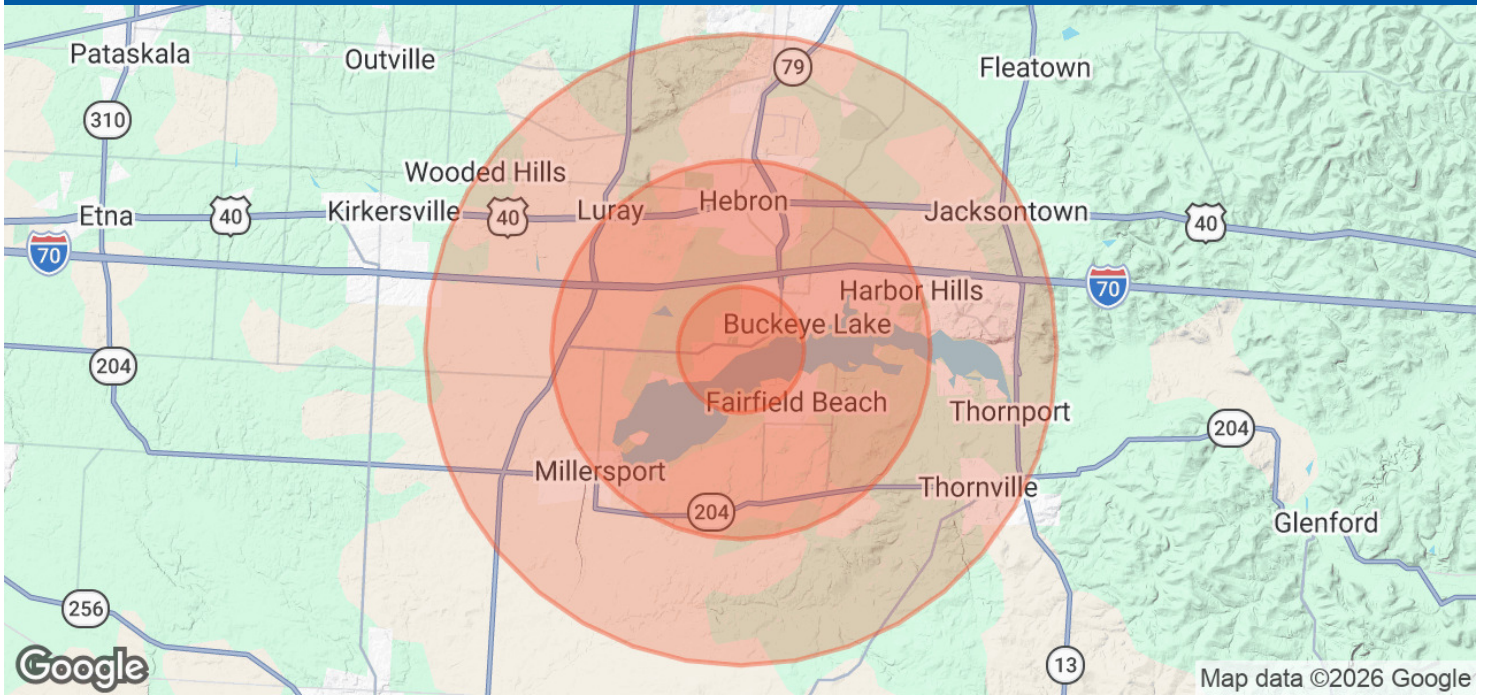
Imagery ©2026 Airbus, CNES / Airbus, Landsat / Copernicus, Maxar Technologies, USDA/FPAC/GEO





4675 Walnut Rd

Buckeye Lake, OH 43008



Population

	1 Mile	3 Miles	5 Miles
Total Population	1,476	9,249	17,499
Average Age	51.6	47.8	47.8
Average Age (Male)	45.7	43.8	44.8
Average Age (Female)	53.1	50.6	49.6

Households & Income

	1 Mile	3 Miles	5 Miles
Total Households	650	3,860	7,110
# of Persons per HH	2.3	2.4	2.5
Average HH Income	\$91,248	\$96,138	\$99,599
Average House Value	\$168,222	\$256,123	\$284,839

2023 American Community Survey (ACS)

