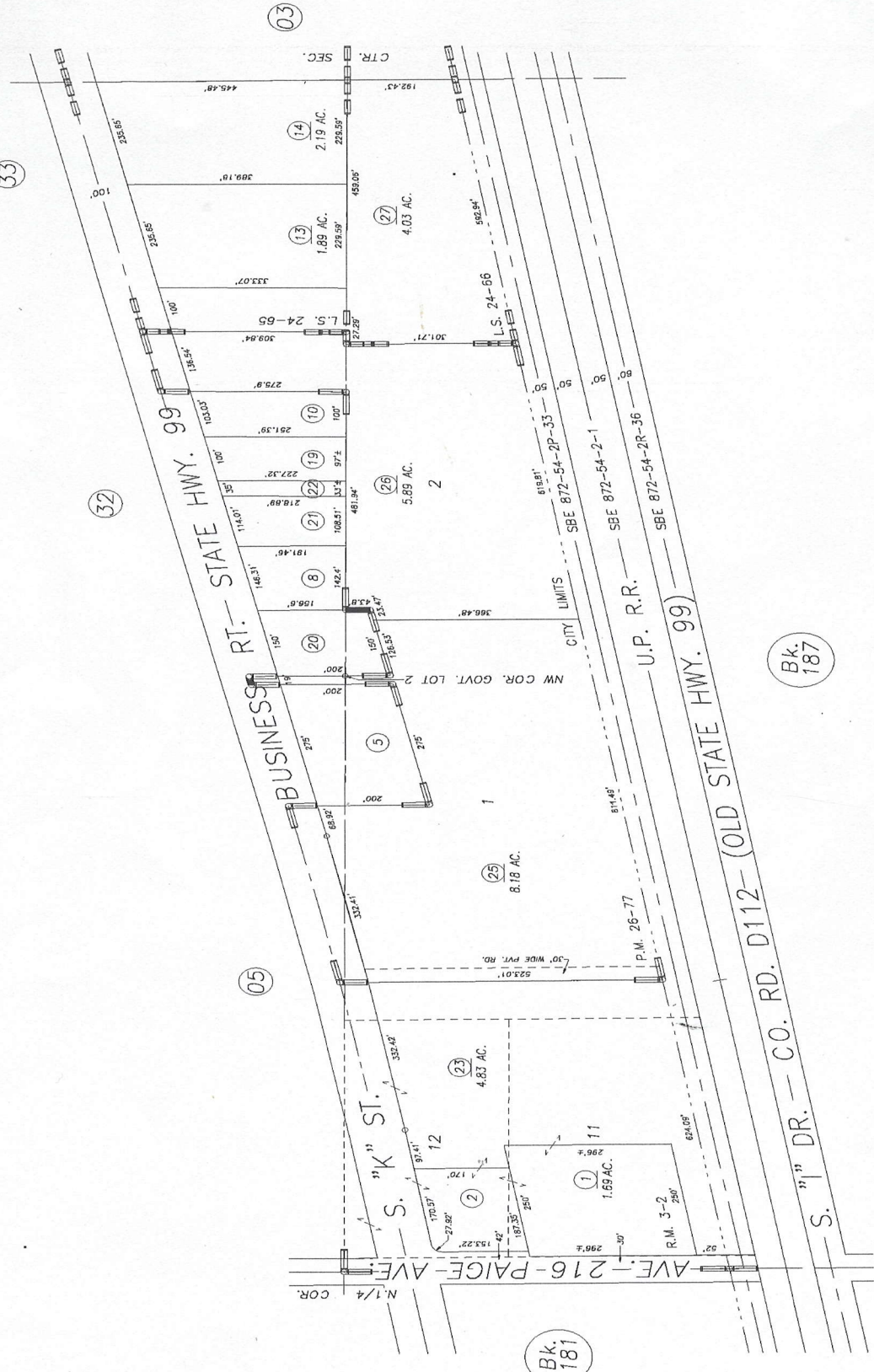
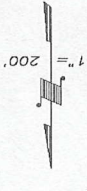


W'LY POR. NE 1/4 & E'LY POR. NW 1/4 SEC. 23, T.20S., R.24E., M.D.B. & Max Area Code 191-04  
5-092

**DISCLAIMER**  
THIS MAP WAS PREPARED FOR LOCAL PROPERTY ASSESSMENT PURPOSES ONLY AND THE PARCELS SHOWN HEREON MAY NOT BE IDENTICAL TO THE RECORDS OF THE SUBDIVISION, ORDINANCES, AND NO LIABILITY IS ASSUMED FOR THE USE OF THE INFORMATION SHOWN HEREON.



Bk. 181

Bk. 187

POR. SMITHS COL., R.M. 3-2  
RECORD OF SURVEY, L.S. 24-65  
RECORD OF SURVEY, L.S. 24-66  
PARCEL MAP 2576, P.M. 26-77

REVISION	DATE	BY
	8/15/01	PHN

ASSESSOR'S MAPS BK. 191, PG. 04  
COUNTY OF TULARE, CALIF.

02/03

NOTE: Assessor's Block Numbers Shown in Ellipses  
Assessor's Parcel Numbers Shown in Circles