



FULL FLOOR AVAILABILITY

485 Half Day Road, Buffalo Grove, IL | 29,039 SF



Experience all that you need at 485 Half Day Road. This full floor availability offers users a remarkable 29,039 SF of unique space. Situated on the top floor with a window height of over 19 feet, the premises offers abundant natural light that floods the floor. For larger users, there is prominent top of building signage available.

Plus, access to all the amenities within The Four Hundreds



New conference and training center



New upgraded fitness center



Outdoor patio with fire pit and working beehive on-site



On-site food service including a grab-and-go deli



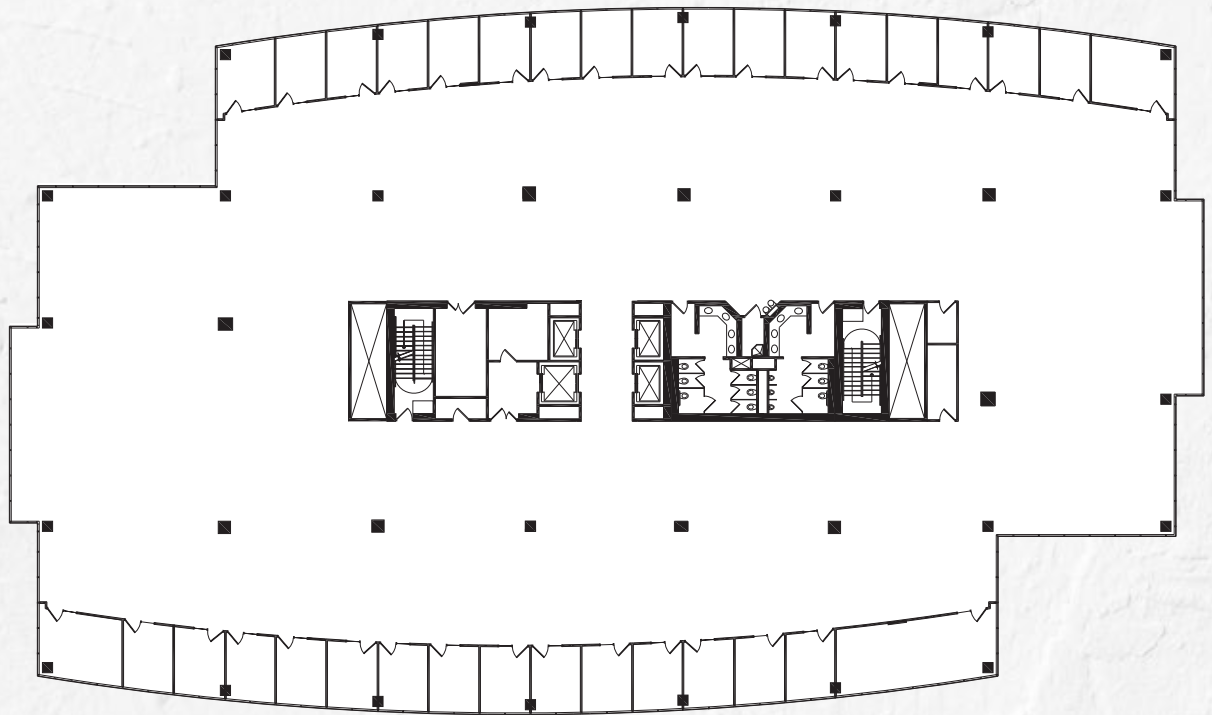
On-site ownership and property management





FLOOR PLAN

485 Half Day Road, Buffalo Grove | Suite 500 | 29,039 RSF



FOR LEASING INFORMATION, PLEASE CONTACT:

CHRIS CUMMINS
+ 1 773 458 1352
chris.cummins@jll.com

JULIE KOELZER
+1 773 632 1049
julie.koelzer@jll.com



Although information has been obtained from sources deemed reliable, JLL does not make any guarantees, warranties or representations, express or implied, as to the completeness or accuracy as to the information contained herein. Any projections, opinions, assumptions or estimates used are for example only. There may be differences between projected and actual results, and those differences may be material. JLL does not accept any liability for any loss or damage suffered by any party resulting from reliance on this information. If the recipient of this information has signed a confidentiality agreement with JLL regarding this matter, this information is subject to the terms of that agreement. ©2024 Jones Lang LaSalle Brokerage, Inc. All rights reserved.