

# SKYLIGHT PLAZA

FOR LEASE



## PROPERTY DETAILS

6671 South Redwood Road, West Jordan, UT 84084

LEASE RATE: \$17.50/SF NNN (Plus CAM)

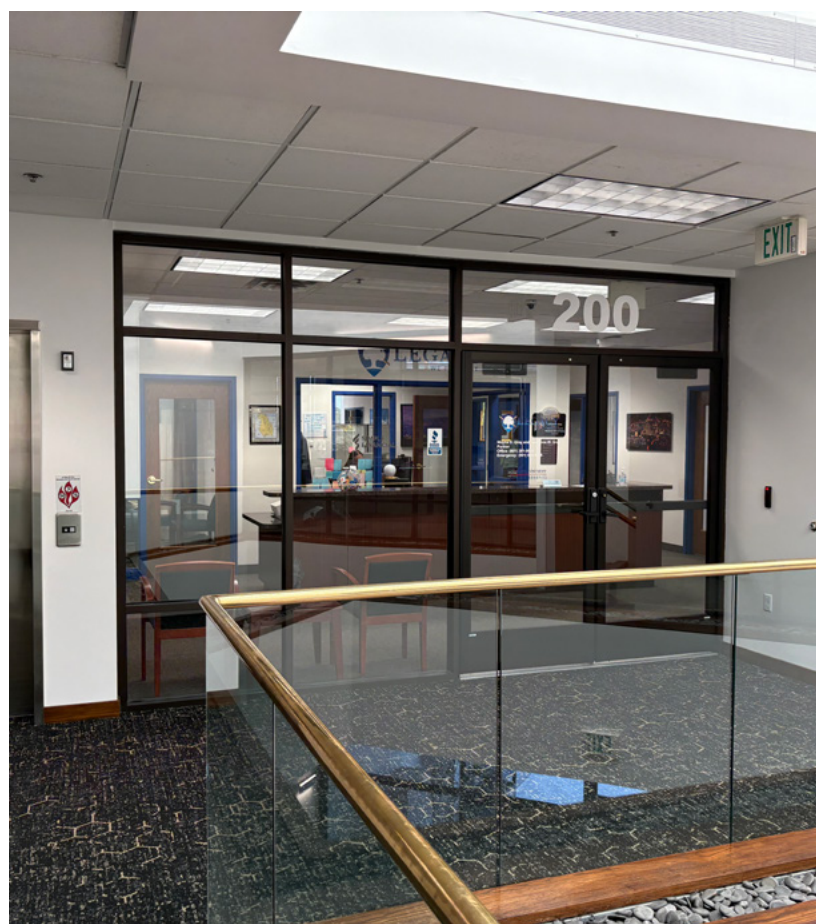
### SUITE 202: AVAILABLE JULY 1, 2026

- 4,375 SF
- Divisible to Approx. 1,265 SF; 1,404 SF; or 1,706 SF
- Recent Lobby Renovations
- Tenant Improvement Allowance Available
- Furniture can be included
- Excellent Location Near I-215
- Abundant Natural Lighting
- Fiber: Google Fiber and Syringa
- CAMs included in quoted FSG rate
- Leases will be NNN structure



**PETER BLACK**  
pblack@newmarkmw.com  
direct 801.971.9425  
[View Profile](#)

**FULL SERVICE  
COMMERCIAL REAL ESTATE**  
312 East South Temple  
Salt Lake City, Utah 84111  
Office 801.456.8800  
[www.newmarkmw.com](http://www.newmarkmw.com)

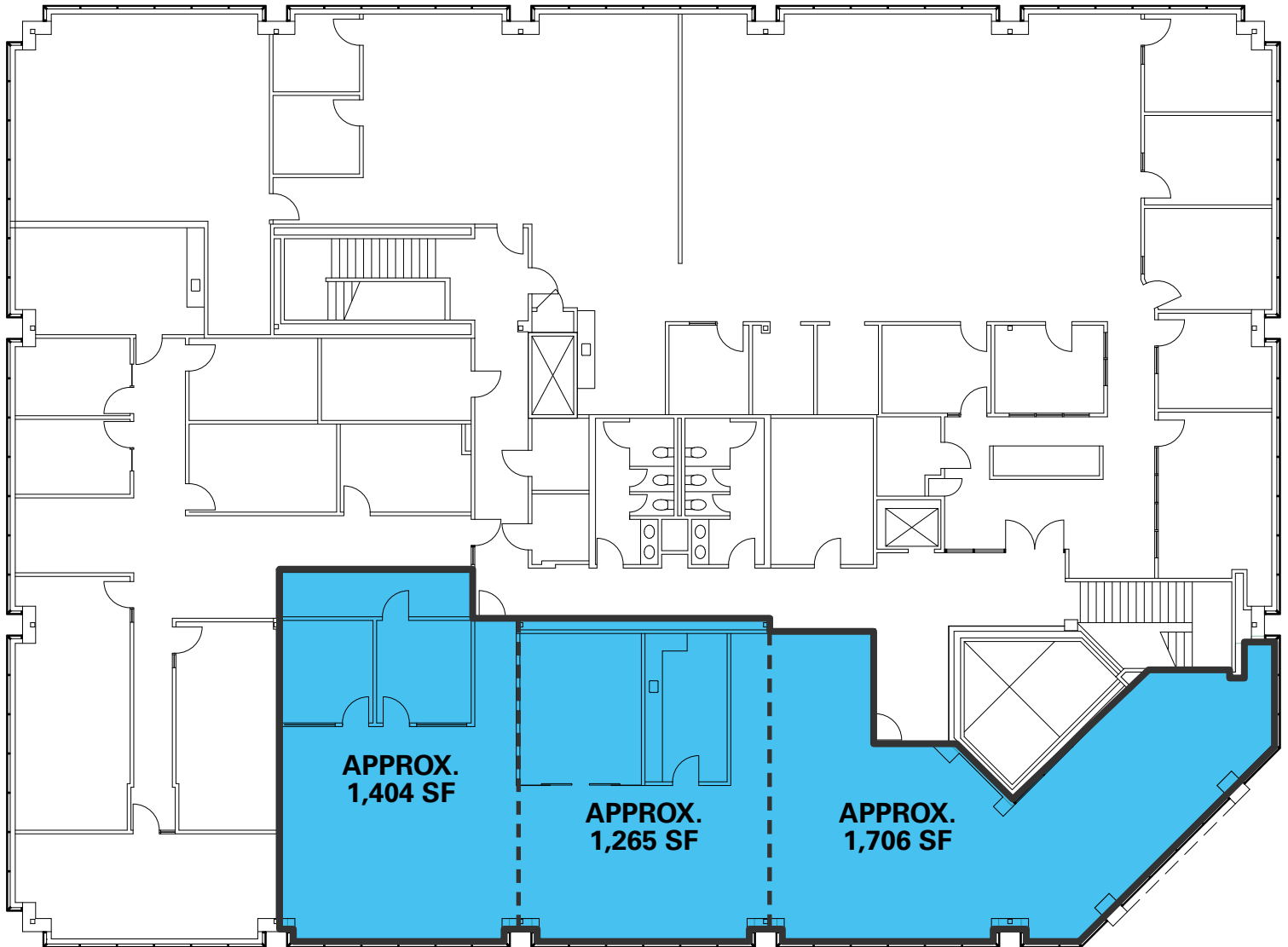


**NEWMARK**  
MOUNTAIN WEST

**PETER BLACK**  
pblack@newmarkmw.com  
direct 801.971.9425  
[View Profile](#)

**FULL SERVICE  
COMMERCIAL REAL ESTATE**  
312 East South Temple  
Salt Lake City, Utah 84111  
Office 801.456.8800  
[www.newmarkmw.com](http://www.newmarkmw.com)

# SKYLIGHT PLAZA



**SUITE 210**  
**4,375 SF TOTAL**



**PETER BLACK**  
pblack@newmarkmw.com  
direct 801.971.9425  
[View Profile](#)

**FULL SERVICE**  
**COMMERCIAL REAL ESTATE**  
312 East South Temple  
Salt Lake City, Utah 84111  
Office 801.456.8800  
[www.newmarkmw.com](http://www.newmarkmw.com)



**PETER BLACK**  
 pblack@newmarkmw.com  
 direct 801.971.9425  
[View Profile](#)

**FULL SERVICE  
 COMMERCIAL REAL ESTATE**  
 312 East South Temple  
 Salt Lake City, Utah 84111  
 Office 801.456.8800  
[www.newmarkmw.com](http://www.newmarkmw.com)