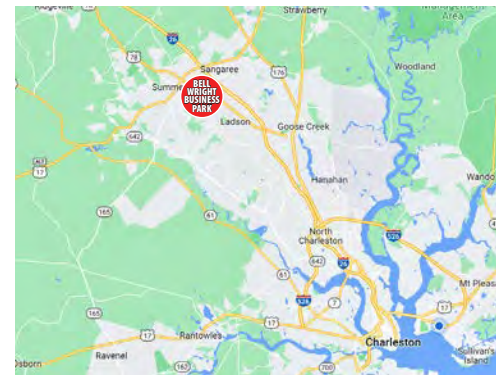




INDUSTRIAL SPACE FOR LEASE

131 Elliana Way
SUMMERVILLE, SC 29483



OFFERING SUMMARY

Address	131 Elliana Way Summerville, SC 29483
Zoning	Light Industrial
County	Berkeley County
Municipality	North Charleston
Lease Type	NNN
Available SF	Unit D - 2,652 SF

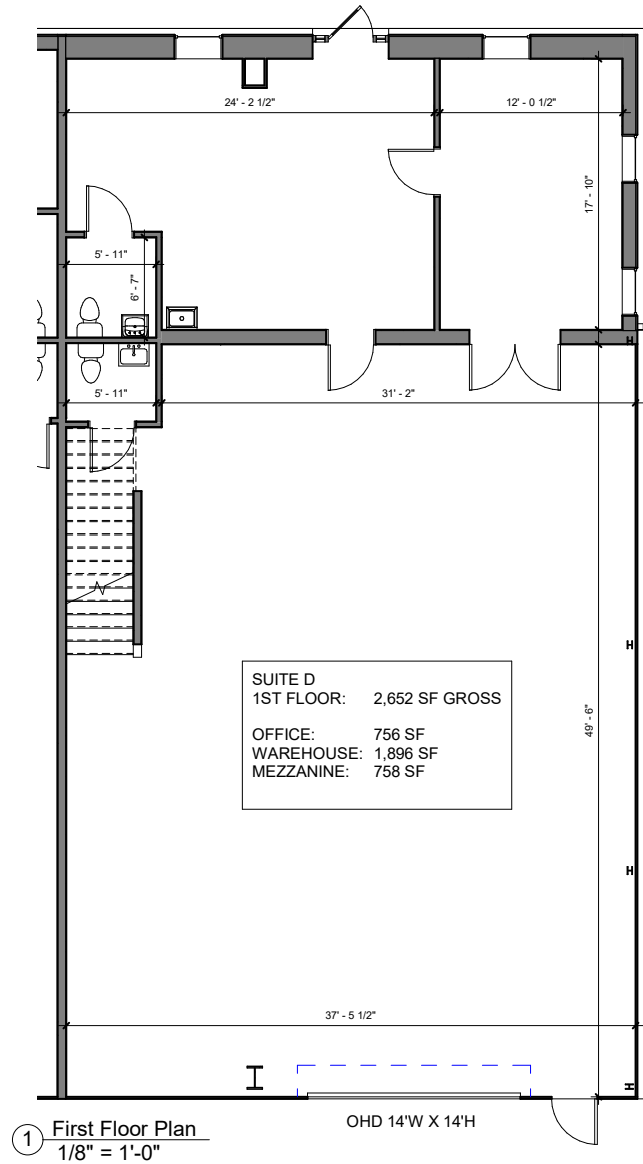
THE PROPERTY

Bell Wright Business Park is located just off of Highway 78 in Summerville, 4 miles South of Exit 199 on I-26. The industrial park is in close proximity to I-26 connecting it to The Charleston Port Terminals, The Charleston International Airport and local manufacturers, Mercedes, Boeing, Volvo and Bosch.

131 Elliana Way, Unit D offers 756 SF of conditioned office space, 1,896 SF of warehouse, plus an additional 758 SF mezzanine area. Warehouse equipped with a 14'x14' roll-up door. Unit is move-in ready with fresh paint, new carpet, and brand-new HVAC installed. Available for immediate occupancy.

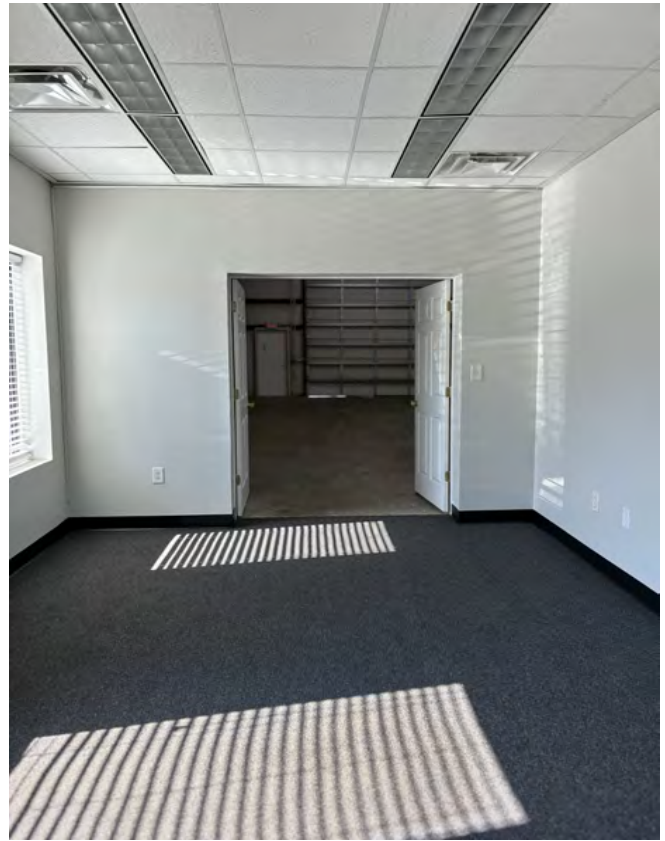
Grace Moring, Leasing
843.518.6808
gmoring@wrsrealty.com

131 ELLIANA WAY - UNIT D



The information contained herein was obtained from sources believed reliable, however, WRS Inc. makes no guarantees, warranties, or representations as to the completeness or accuracy thereof. The presentation of this property is submitted subject to errors, omissions, change of tenants or conditions prior to sale or lease, or withdrawal without notice.
WRS Inc. | 410 Mill Street, Bldg. 1, Suite 200 | Mount Pleasant, SC 29464 | main 843.654.7888 | fax 843.654.7889

131-D ELLIANA PHOTOS



131-D ELLIANA PHOTOS

