

# 1300 WILSON



# NEW ON-SITE AMENITIES



## STUNNING NATURAL LIGHT

The redesign incorporates expanded entryways allowing natural light to flood the open-plan, modern lobby to greet tenants and guests alike.



## RELAX AND RECHARGE

The tenant-only fitness center, equipped with state-of-the-art cardio and weight-training equipment, features spa-quality locker facilities, and modern meditation/yoga studio.



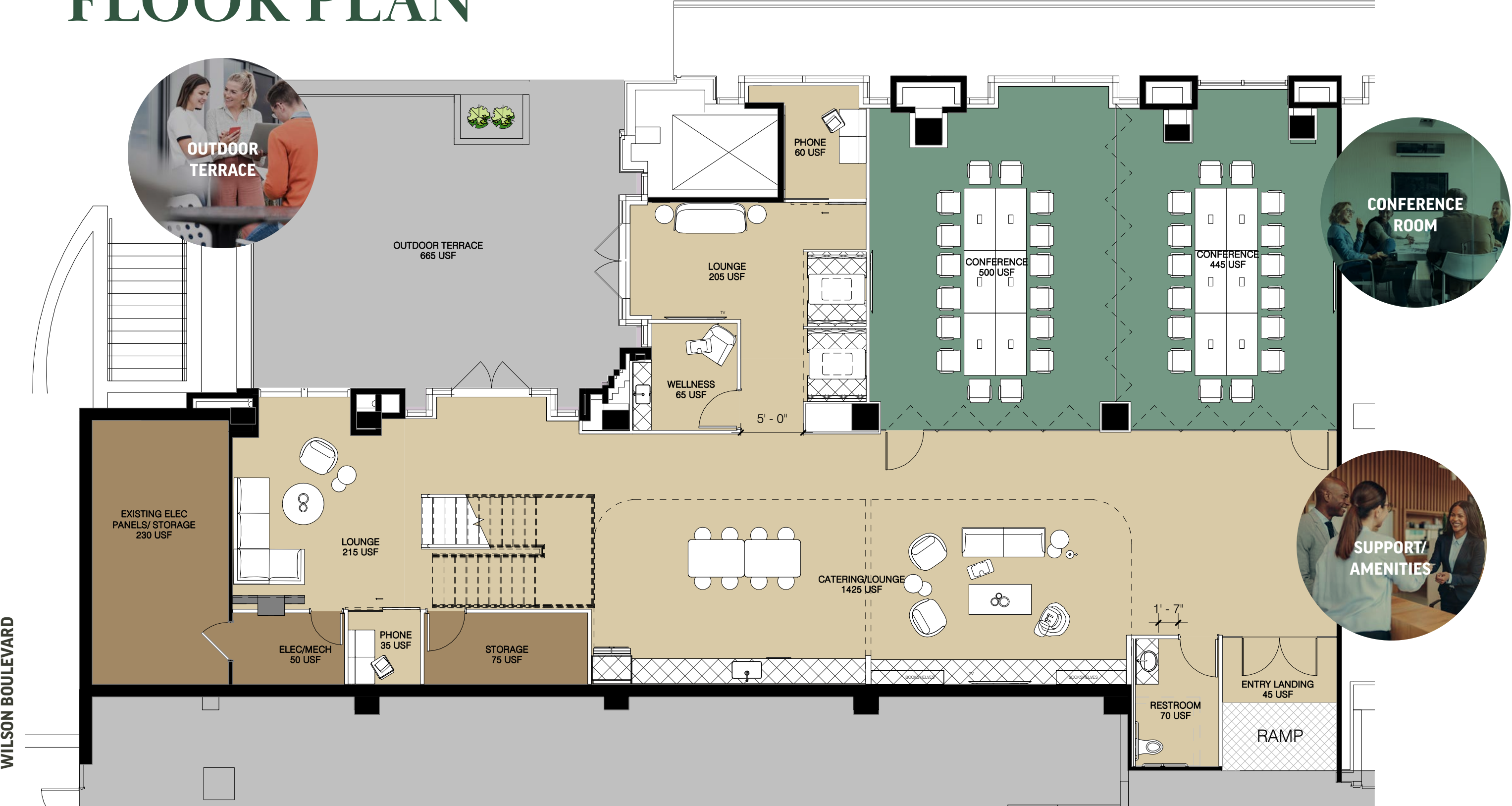
## EXQUISITE GRAND LOBBY

The newly refreshed and modernized lobby features high-end finishes with terrazzo flooring complimented by continuous hickory millwork wall and ceiling panels.



# AMENITY FLOOR PLAN

FORT MYER DRIVE





# PROXIMITY THAT POWERS PRODUCTIVITY

1300 Wilson puts you at the center of it all—steps from D.C., minutes to the airport, and perfectly connected to I-66 and I-495—making it effortless for top talent to get to work. With unbeatable access and a location that blends urban energy with commuter ease, it's a modern HQ for companies that want to work smarter and live better.



**DOWNTOWN D.C.**  
10-15 MINUTES



**REAGAN NATIONAL  
AIRPORT**  
10-13 MINUTES



**DULLES INTERNATIONAL  
AIRPORT**  
30 MINUTES



**I-66 – 2 MINUTES**  
**I-495 – 10-15 MINUTES**





# AREA AMENITIES



**MORNING**  
Grab a coffee and pastry at Il Canale.



**MID-MORNING**  
Shop and explore Ballston Quarter.



**LUNCH**  
Enjoy southern comfort at Tupelo Honey.



**AFTERNOON**  
Pick up something stylish at Nordstrom Rack.



**EVENING**  
Unwind with dinner and drinks at Barley Mac.





# THE FUTURE OF ROSSLYN IS HERE

The ever-growing local amenity base throughout Rosslyn and Arlington puts 1300 Wilson at the center of "Main-and-Main", creating a highly sought after live-work-play environment.



## CENTRAL PLACE PLAZA

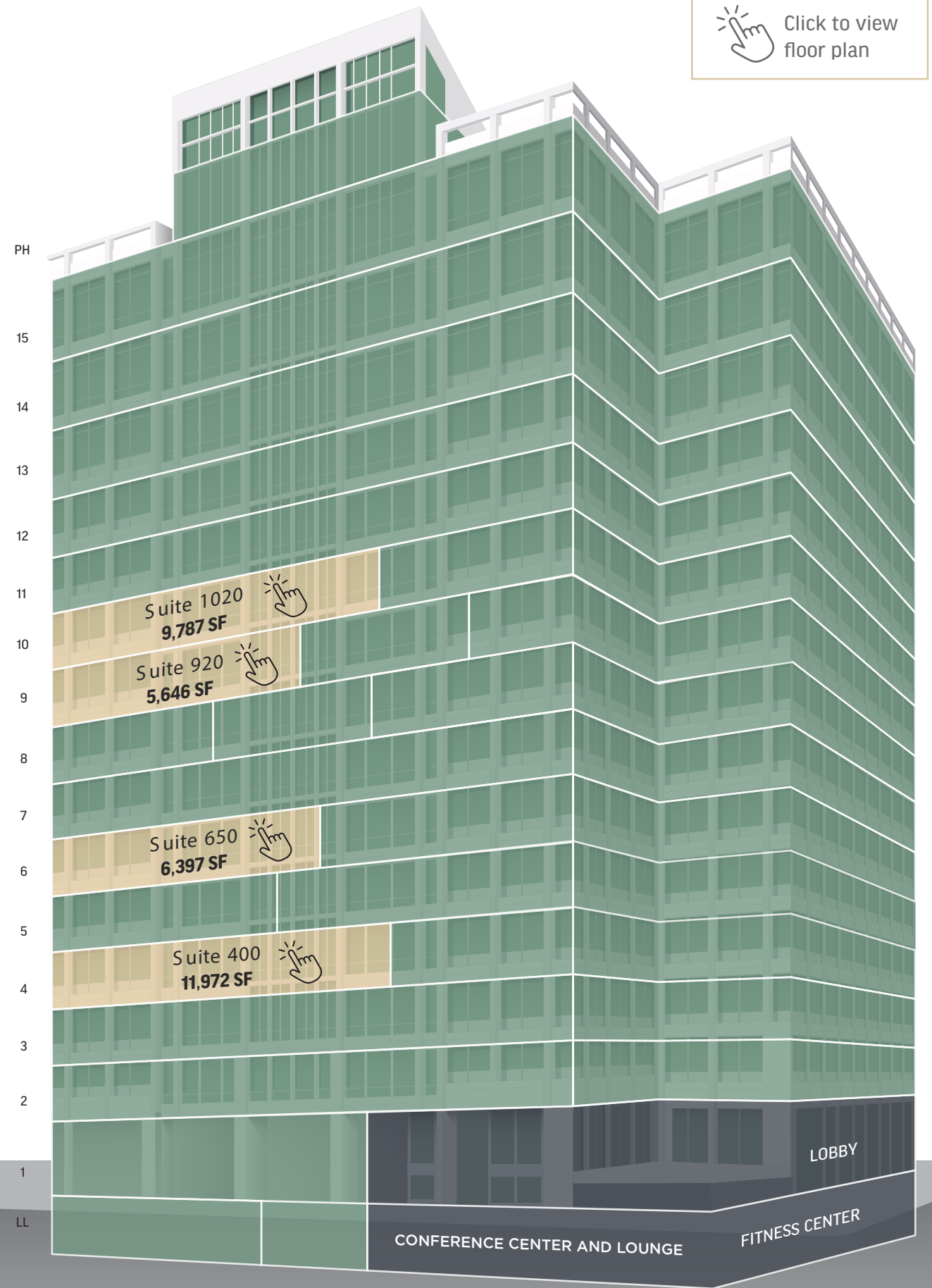
Just steps away from 1300 Wilson, Central Place Plaza boasts 45,000 square feet of highly desirable retail and dining options. The nine dining options featured in the Plaza cater to over 25,000 employees in the Rosslyn area.



## ROSSLYN CITY CENTER

Directly adjacent to 1300 Wilson, Rosslyn City Center offers 29,000 square feet of dining options spanning across two floors and an outdoor terrace.

Click to view floor plan



Common Area Vacant Leased



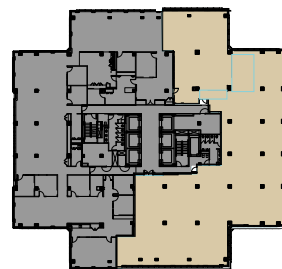
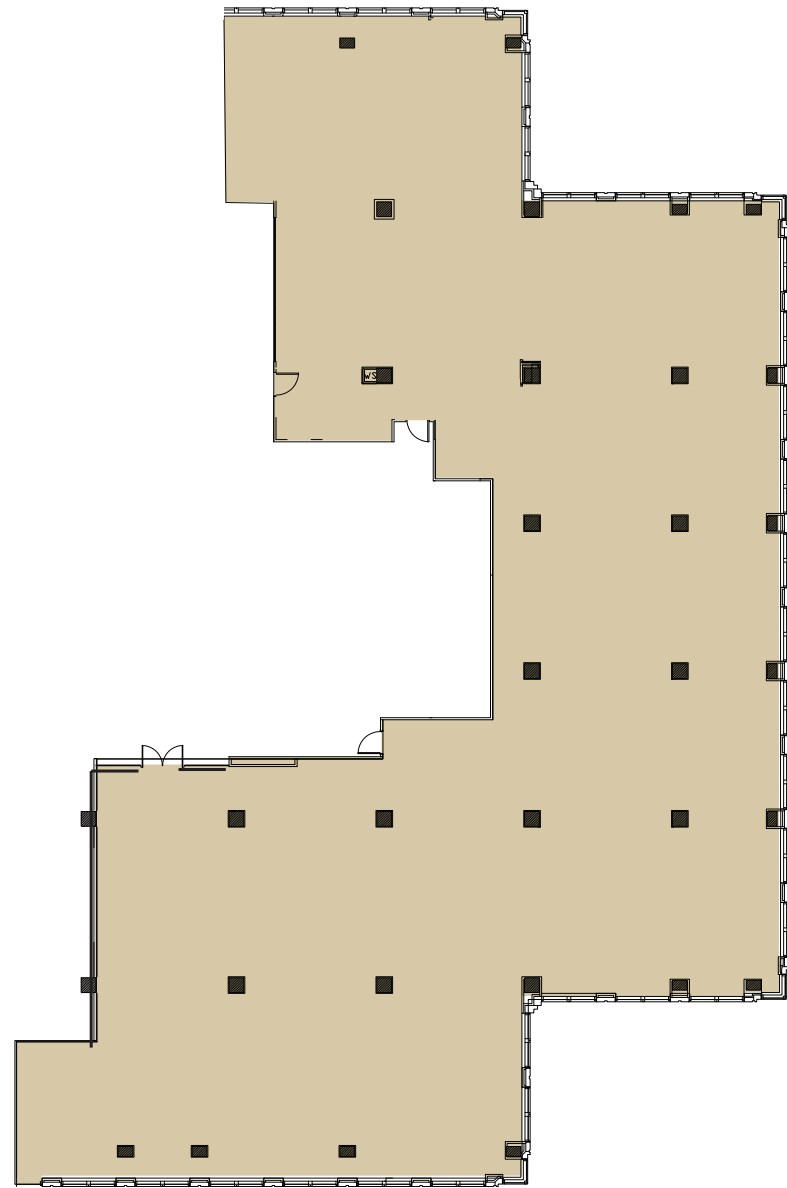
# TROPHY QUALITY

As one of Rosslyn's trophy office towers, 1300 Wilson hardly needs an introduction. The iconic 15-story tower with approximately 360,000 SF exudes prestige and prominence.

With striking views of the Potomac River, landmark bridges and the Washington, DC, skyline, the tower's refined architecture, efficient layouts and unique symmetrical floor plates that allow for eight corner offices per floor make 1300 Wilson a prized address.

# FLOOR PLANS

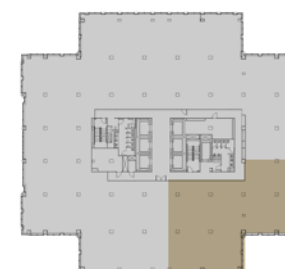
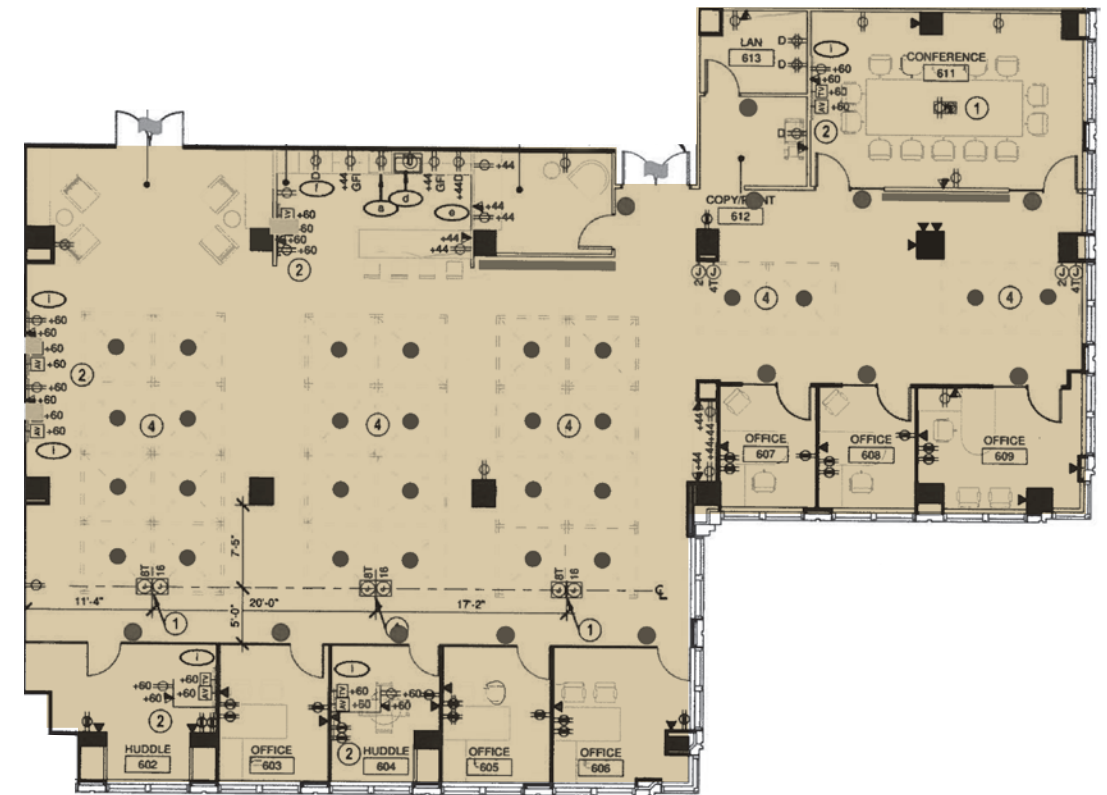
SUITE 400  
11,972 SF



[Return to Stack ↶](#)

# FLOOR PLANS

SUITE 650  
6,397 SF  
AVAILABLE 1/1/26

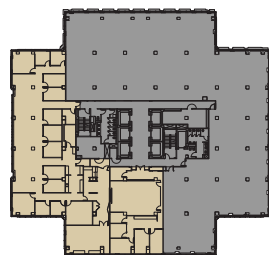
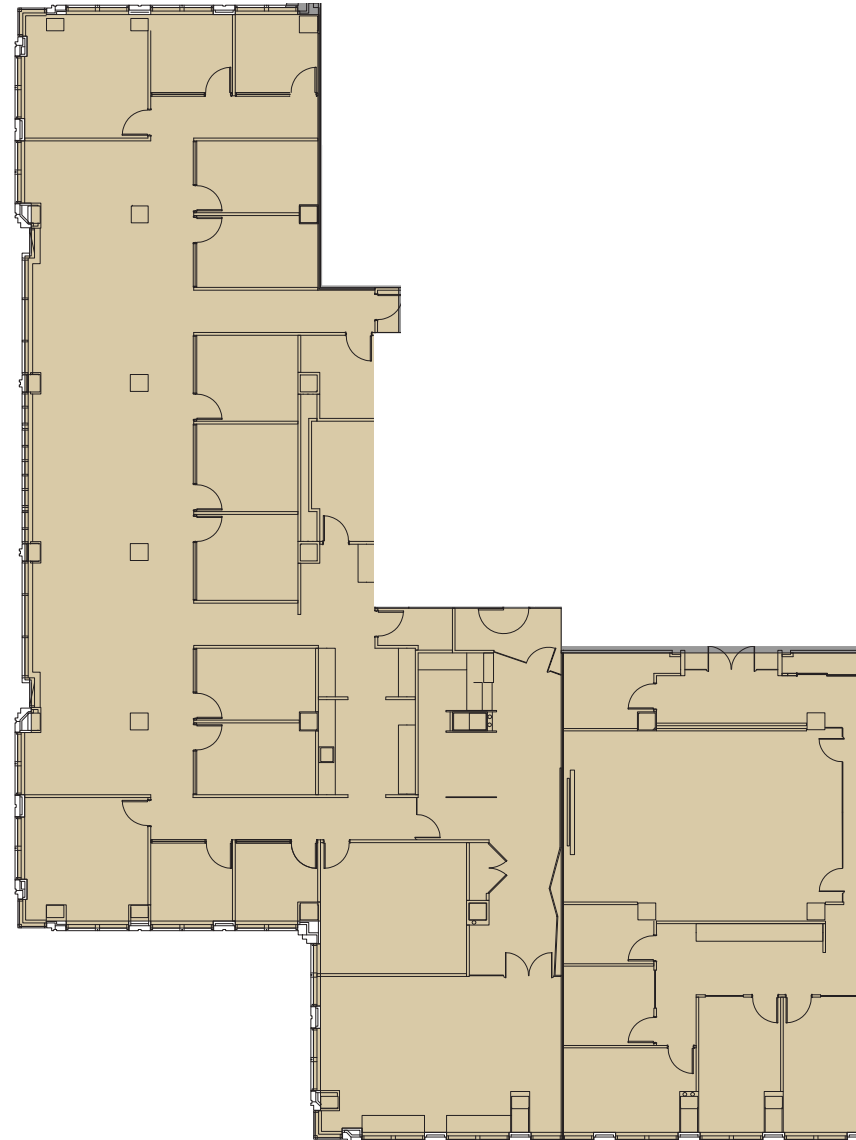


[Return to Stack ↶](#)

# FLOOR PLANS

SUITE 1020

9,787 SF

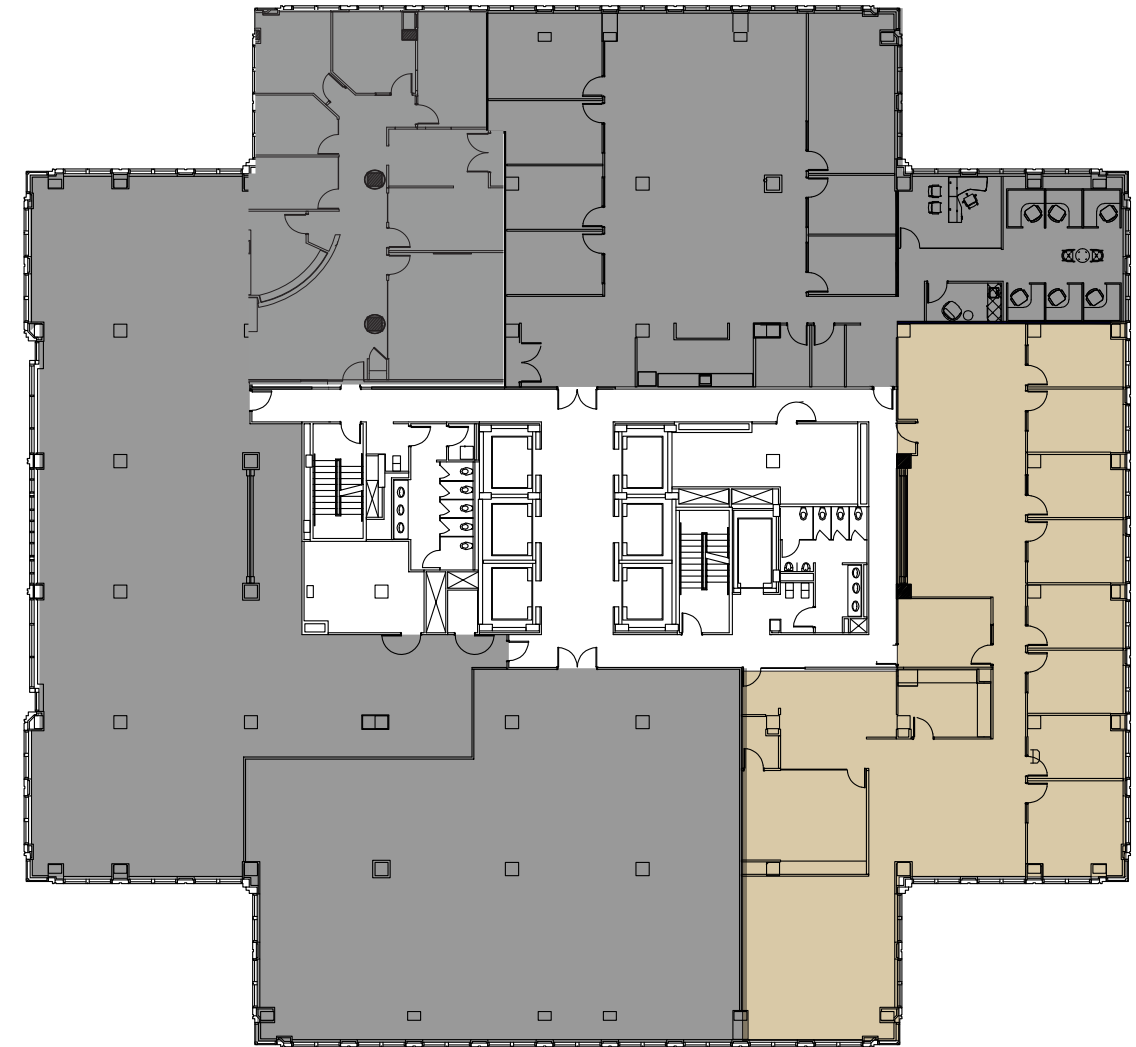


[Return to Stack ↩](#)

# FLOOR PLANS

SUITE 920

5,646 SF



[Return to Stack ↩](#)



**MATT BUNDY**

703 847 2767

[matt.bundy@cushwake.com](mailto:matt.bundy@cushwake.com)

**WILL THOMAS**

703 770 3417

[will.thomas@cushwake.com](mailto:will.thomas@cushwake.com)

**TENLEY DAVIS**

703 485 9152

[tenley.davis@cushwake.com](mailto:tenley.davis@cushwake.com)



©2025 Cushman & Wakefield. All rights reserved. The information contained in this communication is strictly confidential. This information has been obtained from sources believed to be reliable but has not been verified. NO WARRANTY OR REPRESENTATION, EXPRESS OR IMPLIED, IS MADE AS TO THE CONDITION OF THE PROPERTY (OR PROPERTIES) REFERENCED HEREIN OR AS TO THE ACCURACY OR COMPLETENESS OF THE INFORMATION CONTAINED HEREIN, AND SAME IS SUBMITTED SUBJECT TO ERRORS, OMISSIONS, CHANGE OF PRICE, RENTAL OR OTHER CONDITIONS, WITHDRAWAL WITHOUT NOTICE, AND TO ANY SPECIAL LISTING CONDITIONS IMPOSED BY THE PROPERTY OWNER(S). ANY PROJECTIONS, OPINIONS OR ESTIMATES ARE SUBJECT TO UNCERTAINTY AND DO NOT SIGNIFY CURRENT OR FUTURE PROPERTY PERFORMANCE.