

# 1721 OLD COVINGTON ROAD

CONYERS, GA  
30013

**For Lease**  
33,750± SF Warehouse on 3.85± Acres

**BRIAN BRATTON, SIOR**

Senior Vice President  
404.942.2028  
bbratton@kingindustrial.com

**STEVE RATCHFORD, SIOR, CCIM**

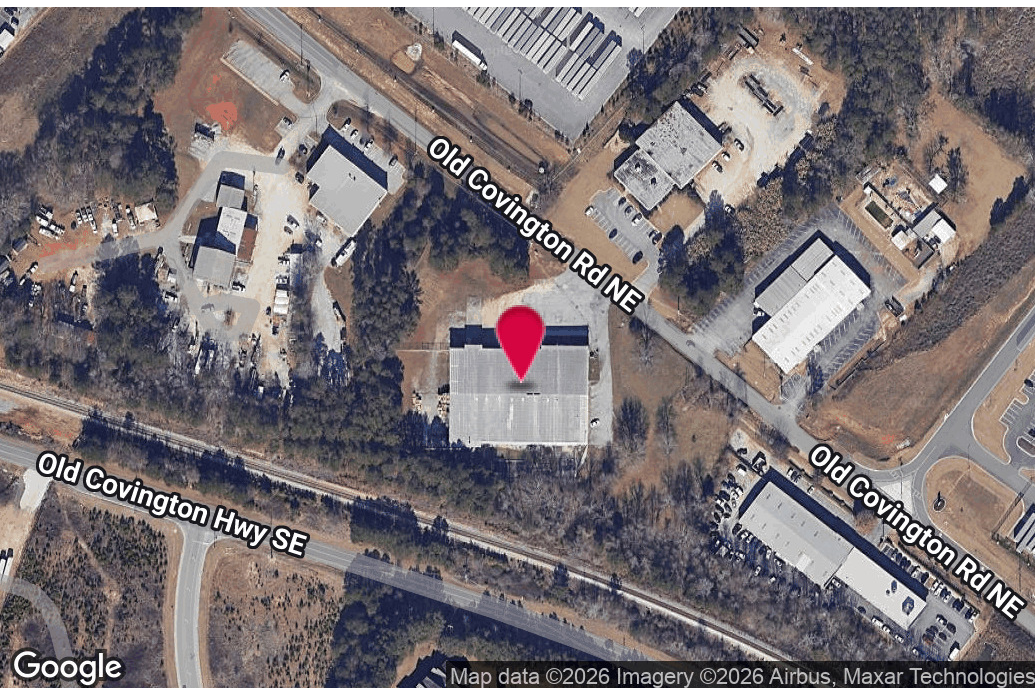
Senior Vice President  
404.942.2003  
sratchford@kingindustrial.com

**King** Industrial  
Realty, Inc.

Industrial • Commercial • Investment  
404.942.2000 | [kingindustrial.com](http://kingindustrial.com)



FOR LEASE  
33,750± SF



## PROPERTY HIGHLIGHTS

- 2,700± SF Office Space Including Mezzanine
- 20' - 23' Clear Ceiling Height
- 7 Dock High Doors
- 1200 AMPS, 480/277 Volts, 3 Phase Power
- 25'x50' Column Spacing
- Fenced Outside Storage
- Zoned M-1
- 3.85± Acres

### BRIAN BRATTON, SIOR

Senior Vice President

404.942.2028

bbratton@kingindustrial.com

### STEVE RATCHFORD, SIOR, CCIM

Senior Vice President

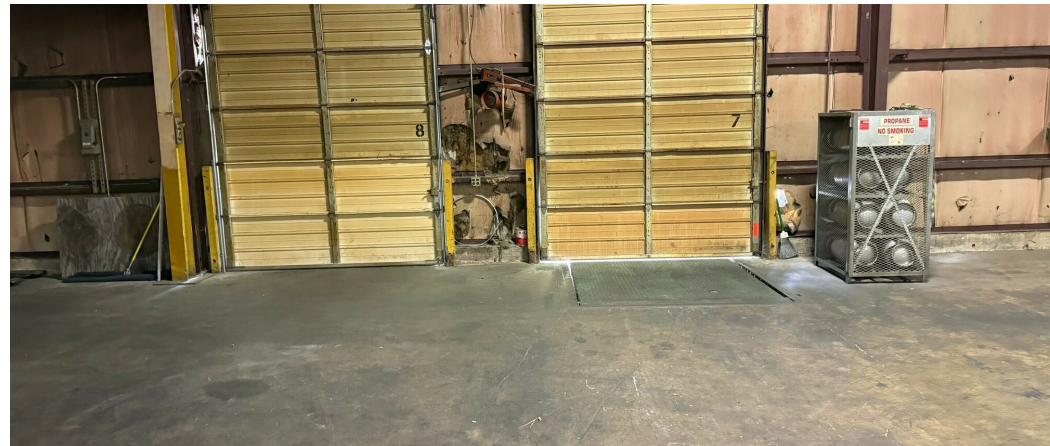
404.942.2003

sratchford@kingindustrial.com

*Every effort has been made to provide accurate information, but no liability is assumed for errors or omissions.*



Industrial • Commercial • Investment  
404.942.2000 | kingindustrial.com



**BRIAN BRATTON, SIOR**

Senior Vice President

404.942.2028

bbratton@kingindustrial.com

**STEVE RATCHFORD, SIOR, CCIM**

Senior Vice President

404.942.2003

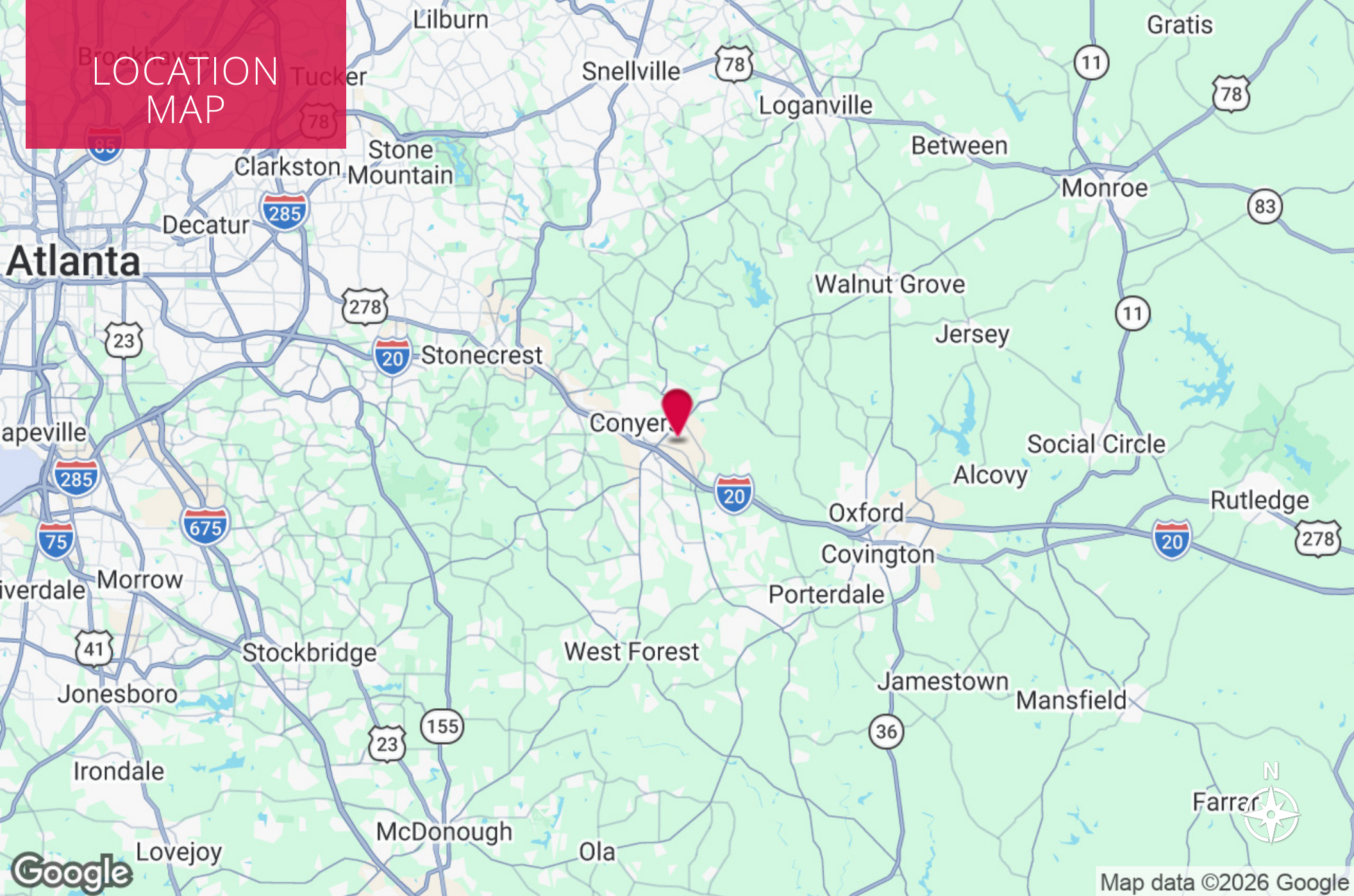
sratchford@kingindustrial.com

*Every effort has been made to provide accurate information, but no liability is assumed for errors or omissions.*



Industrial • Commercial • Investment  
404.942.2000 | kingindustrial.com

# LOCATION MAP



**BRIAN BRATTON, SIOR**

Senior Vice President

404.942.2028

bbratton@kingindustrial.com

**STEVE RATCHFORD, SIOR, CCIM**

Senior Vice President

404.942.2003

sratchford@kingindustrial.com



Industrial • Commercial • Investment  
404.942.2000 | kingindustrial.com

EXCLUSIVELY LISTED BY:

**BRIAN BRATTON, SIOR**

*Senior Vice President*  
bbratton@kingindustrial.com  
404.942.2028

**STEVE RATCHFORD, SIOR, CCIM**

*Senior Vice President*  
sratchford@kingindustrial.com  
404.942.2003

***King*** Industrial  
Realty, Inc.

Industrial • Commercial • Investment  
404.942.2000 | [kingindustrial.com](http://kingindustrial.com)