

4450 Union St., Johnstown, CO
2534 MEDICAL | SURGICAL SUITES FOR LEASE



PROPERTY DETAILS

Gross Building Area: 13,687 SF

AVAILABLE SPACE:

Suite 102: 3,694 RSF - Clinical
Suite 101: 5,077 RSF - Surgical
(May be combined - 8,771 RSF)

Suite 201: 2,928 RSF - Clinical

Ideal Uses:

- Medical
- Surgery center
- Medical Spa
- Chiropractic
- Medical Specialty

Rico Devlin

Sr. Partner/Sr. Broker
970.413.1182
rico@lcrealestategroup.com

Nathan Klein

Sr.Partner/Comm. Brokerage Mgr
970.222.2473
nathan@lcrealestategroup.com

2534 MEDICAL SURGICAL CLINIC

LEASE RATE: \$22-\$26/RSF NNN (\$17.70/SF)

SALE PRICE: \$4,250,000 | \$311/SF

- Ideally located medical building at the center of regional development at 25/34 in Johnstown, with immense future growth expected
- Main floor suite provides a turn-key medical and surgical office with high quality finishes and generous suites
- Beautiful Class A medical/surgical space with spa-like feel on clinical side
- Two fully fit-out surgical suites with all infrastructure in place for plug & play use
- Possibility to split clinical and surgical spaces for smaller or specific medical need
- Competitively priced given existing investment in medical infrastructure
- Elevator served second floor suite with six treatment rooms, private restroom, back office/support area and provider office
- Potential conversion to professional office use

SALE PRICE REDUCED \$250,000!



DEMOGRAPHICS (Source: STDB Online 2025, radius)

	1 Mile	3 Mile	5 Mile
2024 Population	3,568	17,173	56,192
Avg. HH Income	\$130,130	\$149,512	\$153,598
Households	1,804	7,447	22,239
Businesses	151	977	2,155
Employees	2,393	17,669	33,027



TRAFFIC COUNTS (Source: STDBOnline)

US Highway 34 E. & W. of Larimer Pkwy	51,000 VPD
I-25 just North of US Highway 34	84,464 VPD

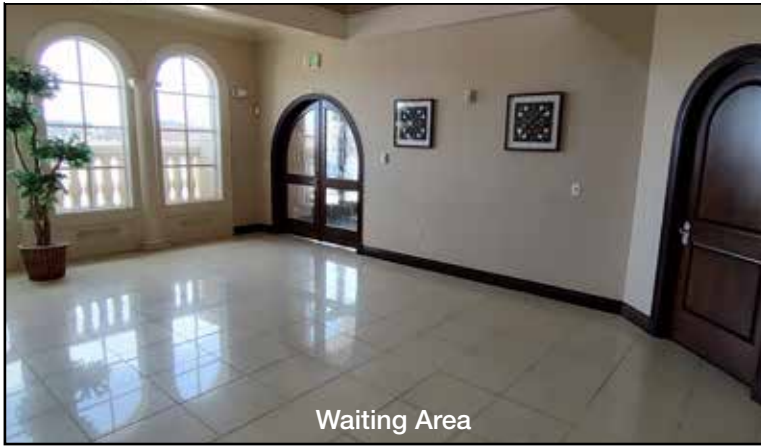
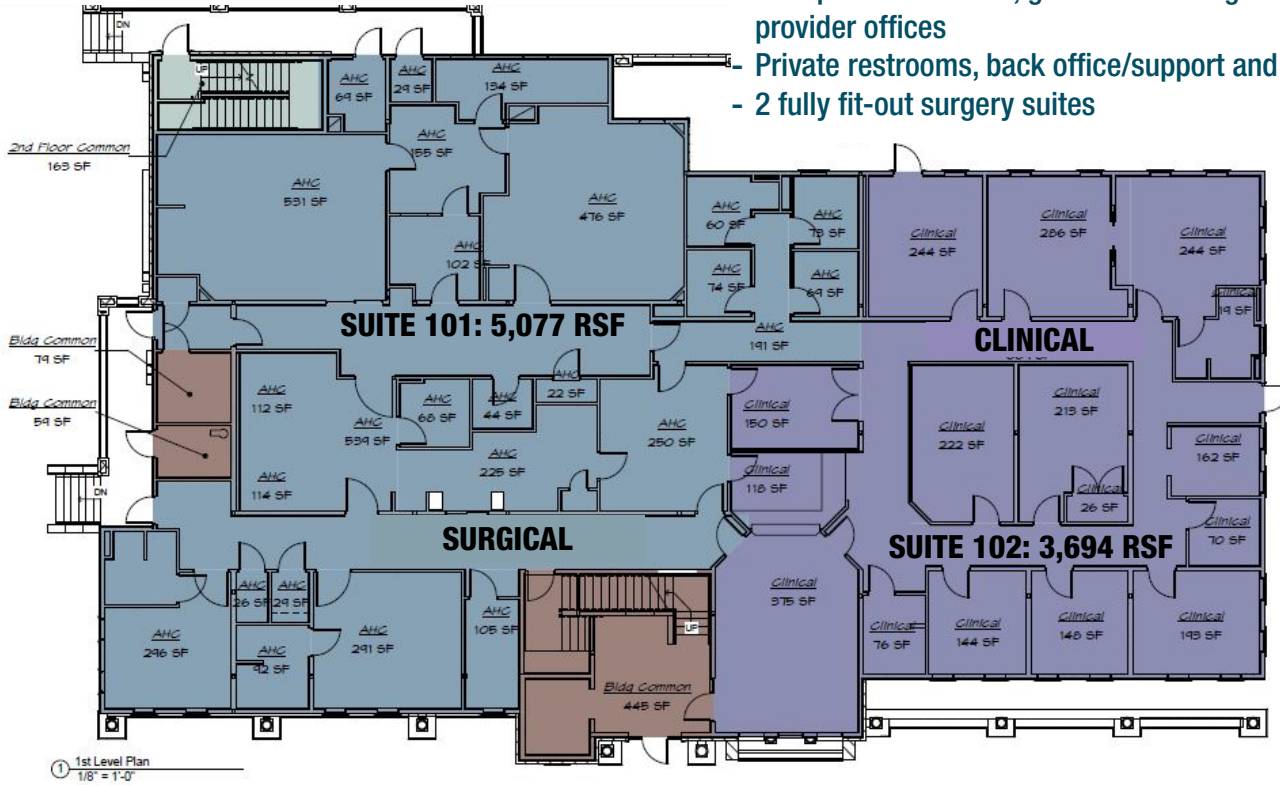
The information above has been obtained from sources believed reliable but is not guaranteed. It is your responsibility to independently confirm its accuracy and completeness. 6/23/2025

MEDICAL/SURGICAL SUITES FOR LEASE

4450 Union St., Johnstown, CO

MAIN FLOOR SUITES:

- Turn-key medical/clinic and surgery spaces
- Multiple exam rooms, generous waiting area plus separate provider offices
- Private restrooms, back office/support and break area
- 2 fully fit-out surgery suites



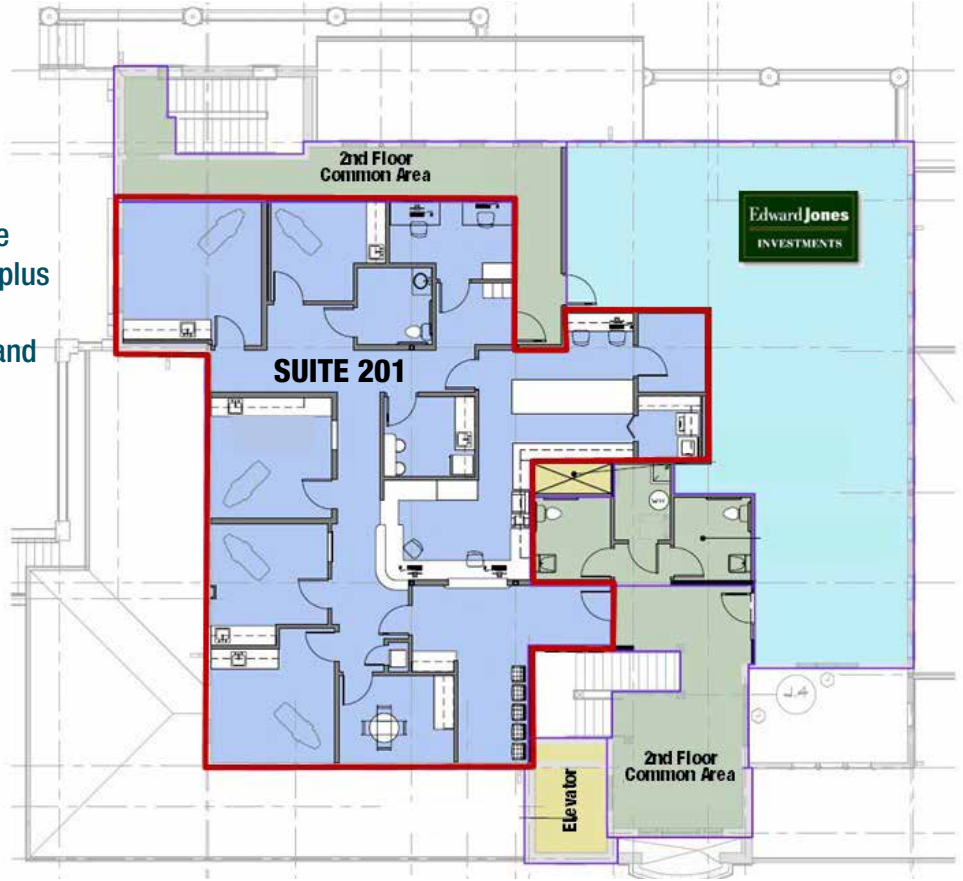
The information above has been obtained from sources believed reliable but is not guaranteed. It is your responsibility to independently confirm its accuracy and completeness. 6/23/2025

MEDICAL/SURGICAL SUITES FOR LEASE

4450 Union St., Johnstown, CO

SUITE 201: 2,928 RSF

- Separate turn-key medical/clinic space
- 6 exam rooms, generous waiting area plus separate provider office
- Private restroom, back office/support and break area
- X-ray infrastructure in place



The information above has been obtained from sources believed reliable but is not guaranteed. It is your responsibility to independently confirm its accuracy and completeness. 6/23/2025

MEDICAL/SURGICAL SUITE FOR LEASE

4450 Union St., Johnstown, CO



Located in Regional Medical hub with huge potential service area



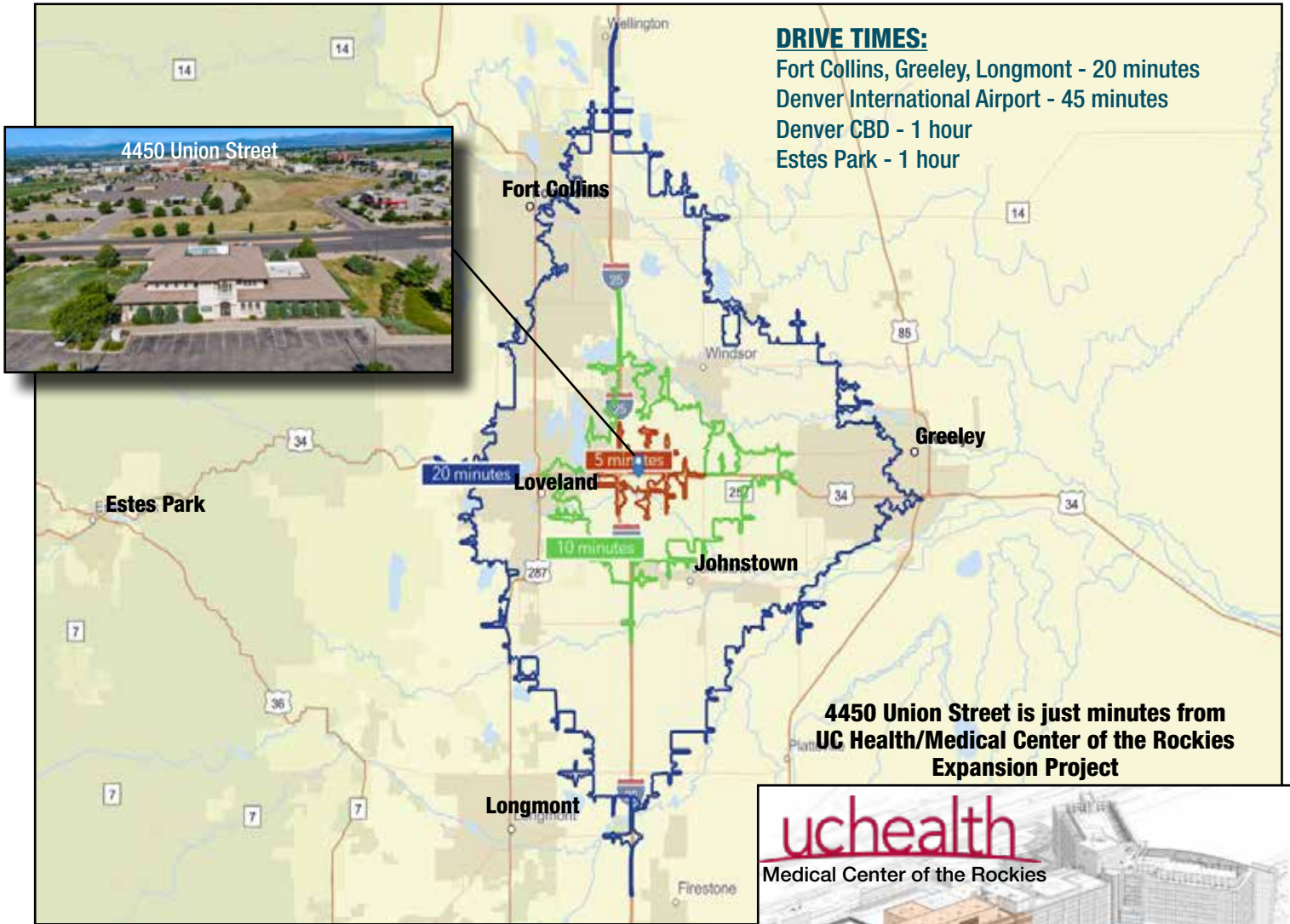
High Quality / High Image Construction

The information above has been obtained from sources believed reliable but is not guaranteed. It is your responsibility to independently confirm its accuracy and completeness. 6/23/2025

Why Johnstown Plaza @2534?

This Property offers a presence in burgeoning Northern Colorado, located at its epicenter near the intersection of I-25 and Highway 34. The 2534 Business Park offers easy access to both a regional customer base and work force, providing the human resources for future business growth and expansion. The region has exploded in the past decade, with an annual population growth rate of 3.5% and expected to nearly double in the next 20 years.

The population within a 30 mile radius of 2534 is more than 656,100 and includes the communities of Fort Collins, Windsor, Greeley, Johnstown, Longmont, Berthoud, and Loveland. The median age is approximately 32. The average household income is \$72,380. Fort Collins/Loveland airport is minutes away providing access to out of state clients.



Medical Center of the Rockies Expansion

The \$280 million expansion project at Medical Center of the Rockies that is designed to help meet the growing health care needs of Northern Colorado. The project includes a new tower that will be built on the north side of the hospital, the creation of a cancer center, an expanded emergency department and additional imaging and cardiac spaces. When complete, the project will increase the hospital's bed capacity from 191 to 287 with room to grow up to 323 beds. Staffing will grow as well; UCHealth expects to hire more than 250 employees before the expansion opens. The cancer center is expected to begin seeing patients next year, and the new tower is expected to open in 2026.

The information above has been obtained from sources believed reliable but is not guaranteed. It is your responsibility to independently confirm its accuracy and completeness. 6/23/2025