

±54,320 SF
FOR LEASE

INDUSTRIAL SPACE WITHIN AIRPORT CENTER SOUTH
1552 S. ARCHIBALD AVENUE | ONTARIO, CA 91761

\$0.80 PSF
FIRST YEAR RATE



DON KAZANJIAN
Senior Vice President
dkazanjan@lee-assoc.com
D 909.373.2929
DRE #00860886

JOE LAHLOU
Associate
jlahlou@lee-assoc.com
D 909.373.2710
DRE #02221608

LEE & ASSOCIATES - ONTARIO
3535 Inland Empire Boulevard | Ontario, CA 91764
(909) 989-7771 | lee-assoc.com
Corporate ID: 00976995

LEE & ASSOCIATES
COMMERCIAL REAL ESTATE SERVICES

PROPERTY PROFILE

±54,320 SF INDUSTRIAL SPACE
1552 S. ARCHIBALD AVENUE | ONTARIO, CA 91761



PROPERTY FEATURES

- | | | |
|-----------------------------------|--|---|
| » ±54,320 SF Available (POL) | » 0.45/3,000 SF Fire Sprinklers | » Concrete Loading Area |
| » ±2,719 SF of Office Space | » 400 Amps, 277/480 Volts (Expandable) | » Archibald Avenue Frontage & Signage |
| » 24' Min. Clear Height | » Skylights | » 8 Dock High Loading Positions (8 EOD Levelers) |
| » Bright "LED" Warehouse Lighting | » 4 Big Ass Fans | » Excellent Access to the CA-60, I-10 & I-15 Freeways |

DON KAZANJIAN
Senior Vice President
dkazanjan@lee-assoc.com
D 909.373.2929
DRE #00860886

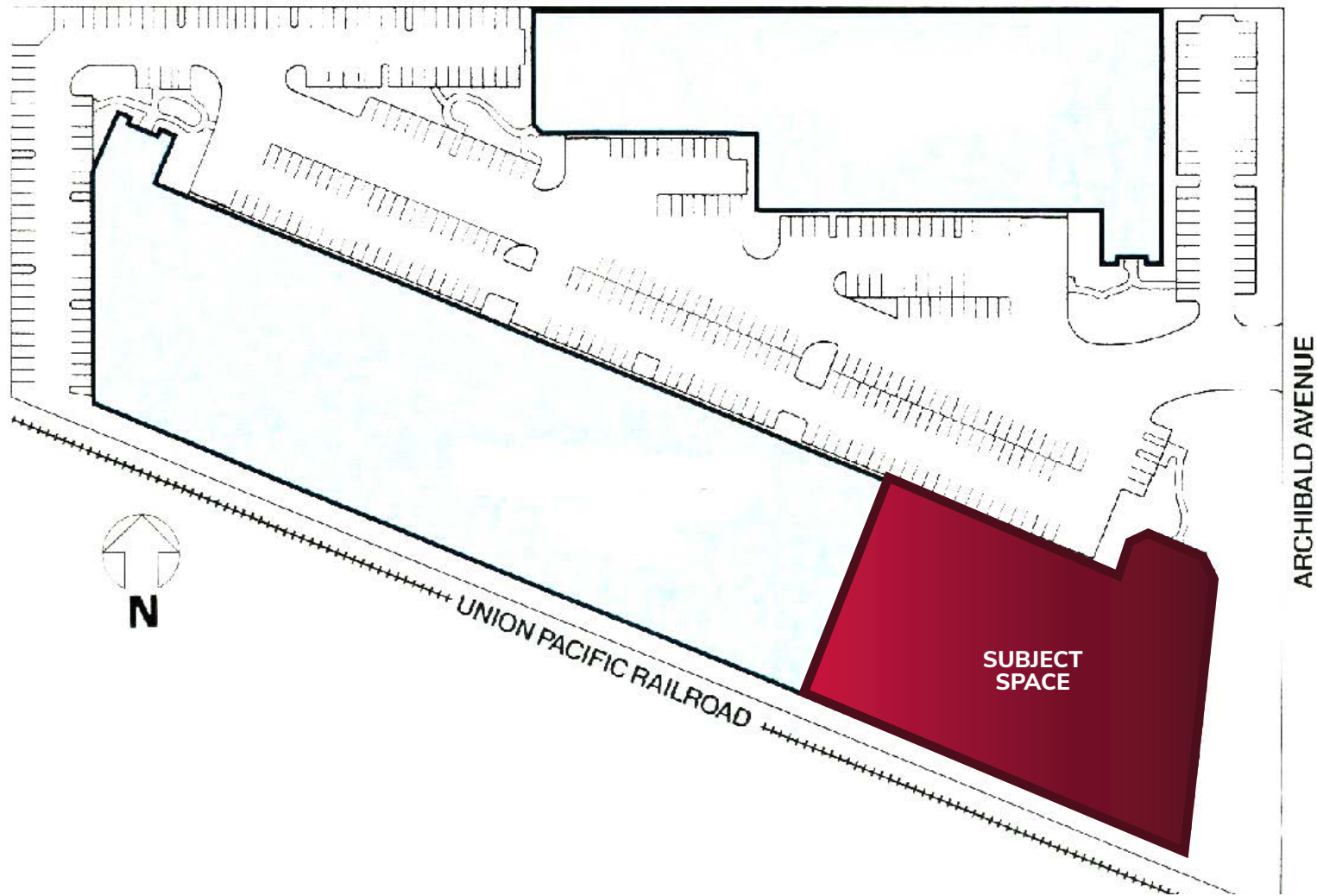
JOE LAHLOU
Associate
jlahlou@lee-assoc.com
D 909.373.2710
DRE #02221608

LEE & ASSOCIATES - ONTARIO
3535 Inland Empire Boulevard | Ontario, CA 91764
(909) 989-7771 | lee-assoc.com
Corporate ID: 00976995

LEE & ASSOCIATES
COMMERCIAL REAL ESTATE SERVICES

SITE PLAN

±54,320 SF INDUSTRIAL SPACE
1552 S. ARCHIBALD AVENUE | ONTARIO, CA 91761



DON KAZANJIAN
Senior Vice President
dkazanjan@lee-assoc.com
D 909.373.2929
DRE #00860886

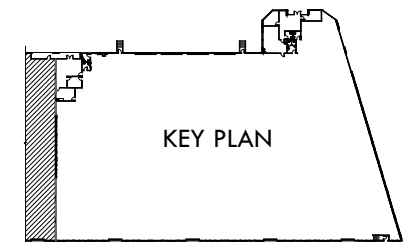
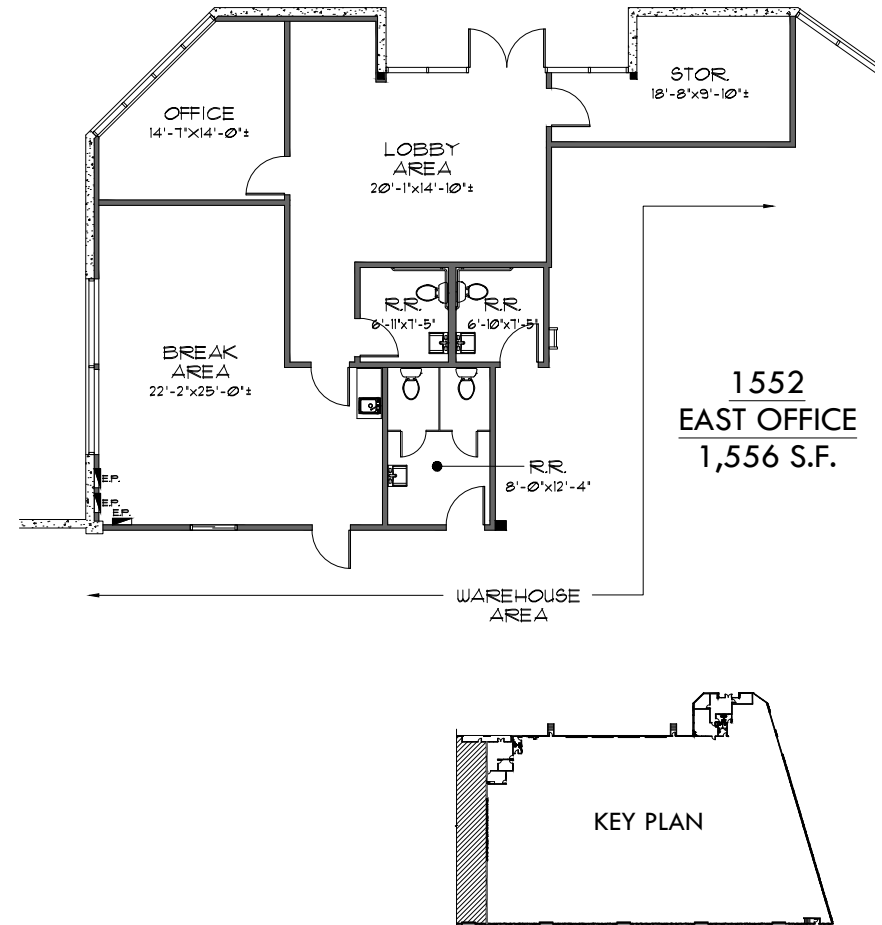
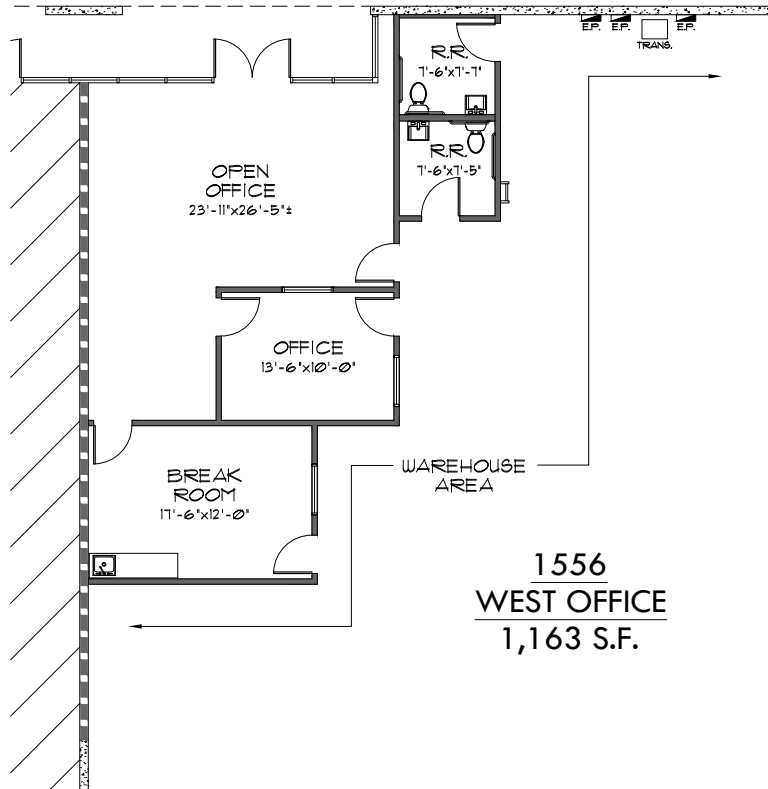
JOE LAHLOU
Associate
jlahlou@lee-assoc.com
D 909.373.2710
DRE #02221608

LEE & ASSOCIATES - ONTARIO
3535 Inland Empire Boulevard | Ontario, CA 91764
(909) 989-7771 | lee-assoc.com
Corporate ID: 00976995

LEE & ASSOCIATES
COMMERCIAL REAL ESTATE SERVICES

OFFICE FLOOR PLANS

±54,320 SF INDUSTRIAL SPACE
1552 S. ARCHIBALD AVENUE | ONTARIO, CA 91761



AIRPORT CENTER SOUTH

DON KAZANJIAN
Senior Vice President
dkazanjan@lee-assoc.com
D 909.373.2929
DRE #00860886

JOE LAHLOU
Associate
jlahlou@lee-assoc.com
D 909.373.2710
DRE #02221608

LEE & ASSOCIATES - ONTARIO
3535 Inland Empire Boulevard | Ontario, CA 91764
(909) 989-7771 | lee-assoc.com
Corporate ID: 00976995

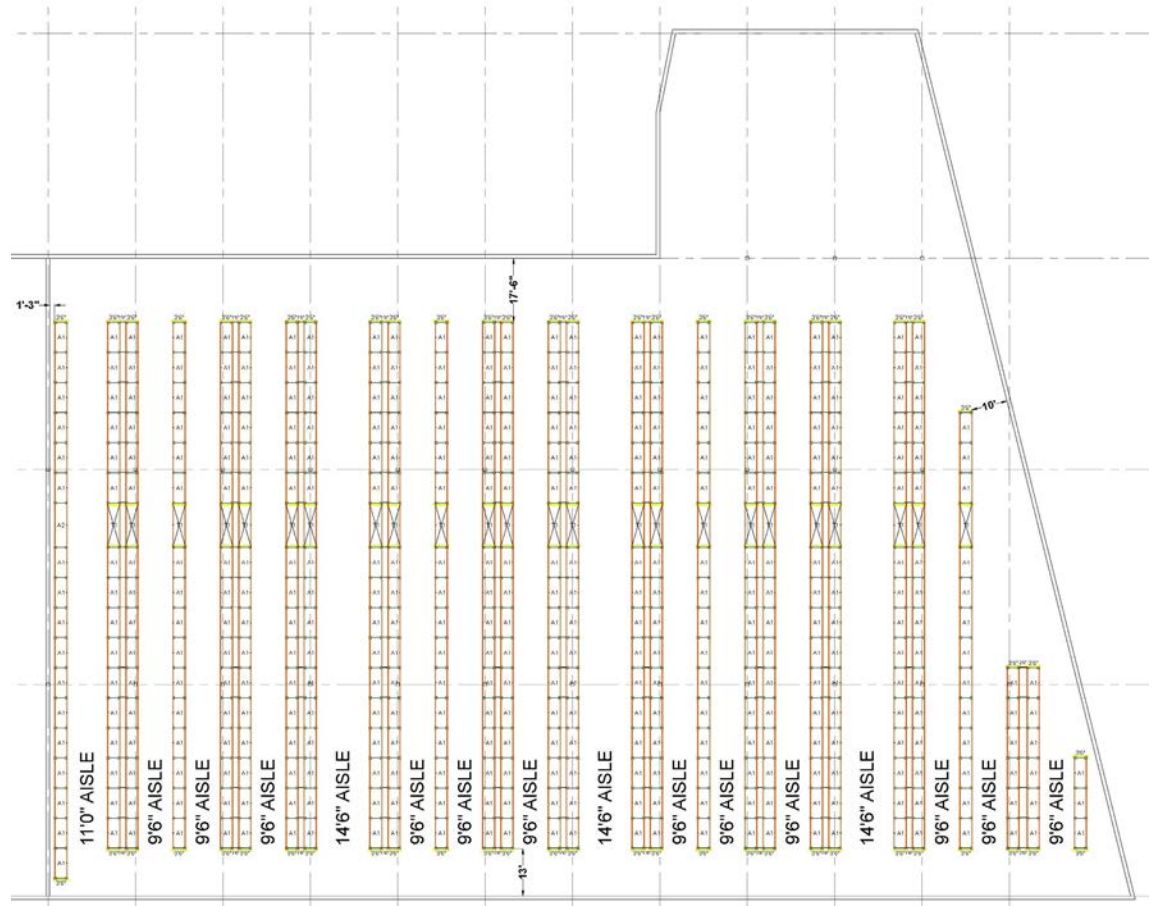
LEE & ASSOCIATES
COMMERCIAL REAL ESTATE SERVICES

RACKING FLOOR PLAN

±54,320 SF INDUSTRIAL SPACE
1552 S. ARCHIBALD AVENUE | ONTARIO, CA 91761

CONCEPTUAL RACKING LAYOUT

- » Approximately 4,289 Pallet Positions (48" Tall Pallet)
- » Approximately 3,388 Pallet Positions (60" Tall Pallet)
- » Selective Rack System
- » 9'6" - 14'6" Aisles
- » 96"L Storage Beams
- » 144"L Tunnel Beams
- » Accessories Upon Request



DON KAZANJIAN
Senior Vice President
dkazanjan@lee-assoc.com
D 909.373.2929
DRE #00860886

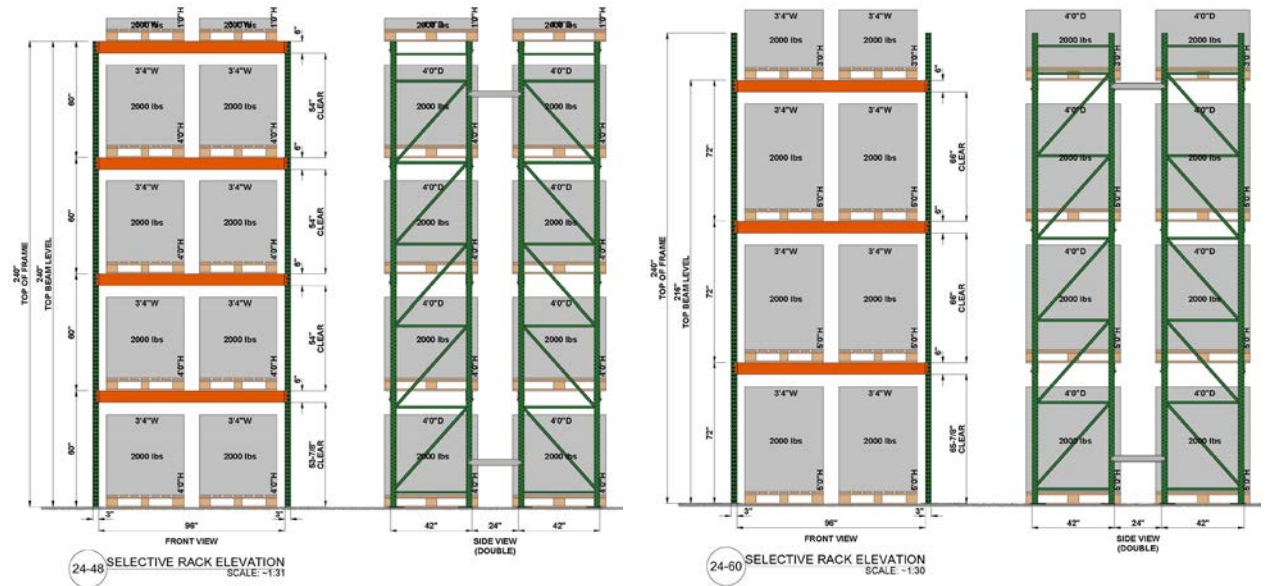
JOE LAHLOU
Associate
jlahlou@lee-assoc.com
D 909.373.2710
DRE #02221608

LEE & ASSOCIATES - ONTARIO
3535 Inland Empire Boulevard | Ontario, CA 91764
(909) 989-7771 | lee-assoc.com
Corporate ID: 00976995

LEE & ASSOCIATES
COMMERCIAL REAL ESTATE SERVICES

RACKING ELEVATION

±54,320 SF INDUSTRIAL SPACE
1552 S. ARCHIBALD AVENUE | ONTARIO, CA 91761



CONCEPTUAL RACKING LAYOUT

DON KAZANJIAN
Senior Vice President
dkazanjan@lee-assoc.com
D 909.373.2929
DRE #00860886

JOE LAHLOU
Associate
jlahlou@lee-assoc.com
D 909.373.2710
DRE #02221608

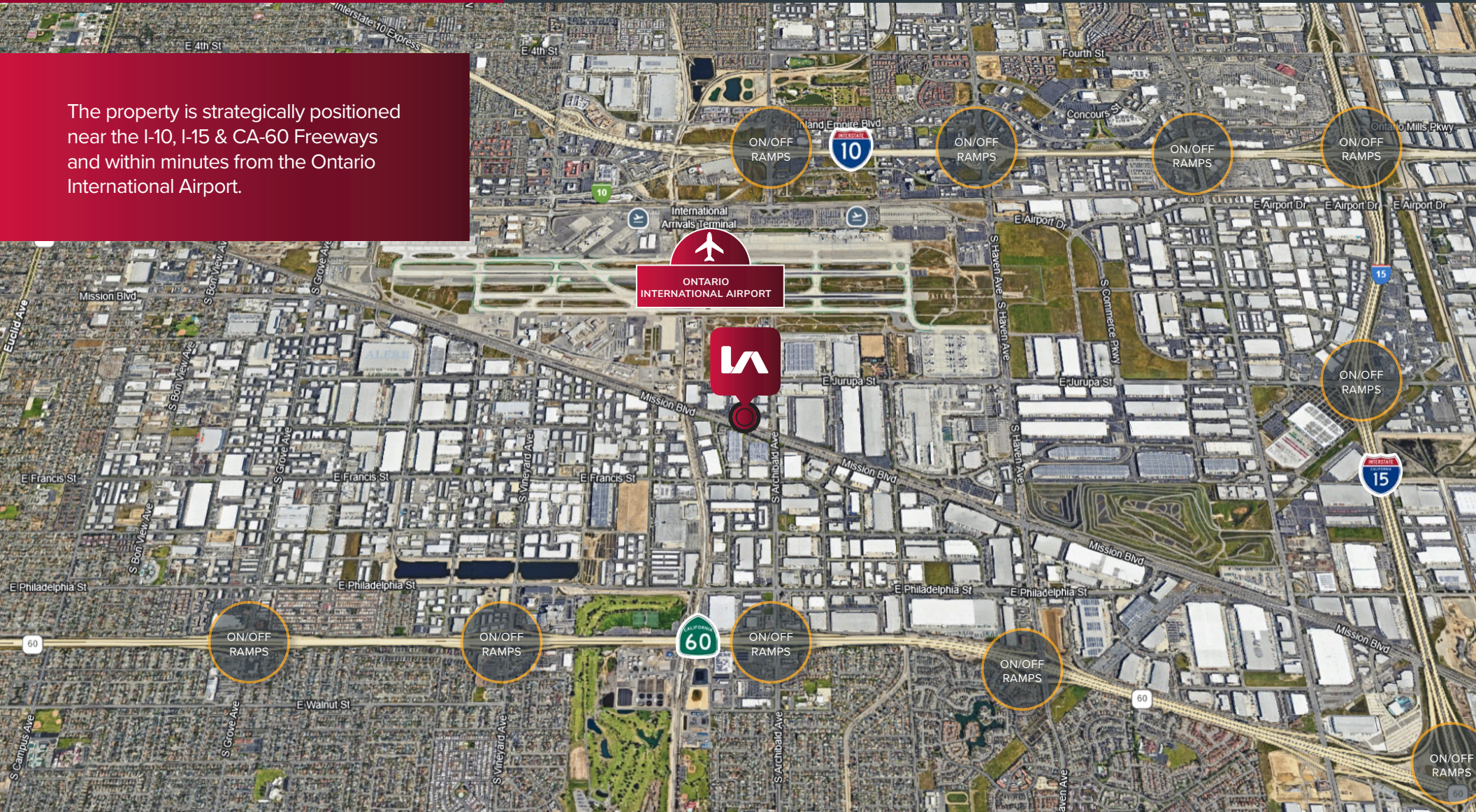
LEE & ASSOCIATES - ONTARIO
3535 Inland Empire Boulevard | Ontario, CA 91764
(909) 989-7771 | lee-assoc.com
Corporate ID: 00976995

LEE & ASSOCIATES
COMMERCIAL REAL ESTATE SERVICES

LOCATION MAP

±54,320 SF INDUSTRIAL SPACE
1552 S. ARCHIBALD AVENUE | ONTARIO, CA 91761

The property is strategically positioned near the I-10, I-15 & CA-60 Freeways and within minutes from the Ontario International Airport.



DON KAZANJIAN
Senior Vice President
dkazanjan@lee-assoc.com
D 909.373.2929
DRE #00860886

JOE LAHLOU
Associate
jlahlou@lee-assoc.com
D 909.373.2710
DRE #02221608

LEE & ASSOCIATES - ONTARIO
3535 Inland Empire Boulevard | Ontario, CA 91764
(909) 989-7771 | lee-assoc.com
Corporate ID: 00976995

LEE & ASSOCIATES
COMMERCIAL REAL ESTATE SERVICES

±54,320 SF INDUSTRIAL SPACE

1552 S. ARCHIBALD AVENUE | ONTARIO, CA 91761

FOR MORE INFORMATION

DON KAZANJIAN

Senior Vice President
dkazanjian@lee-assoc.com
D 909.373.2929
DRE #00860886

JOE LAHLOU

Associate
jlahlou@lee-assoc.com
D 909.373.2710
DRE #02221608

LEE & ASSOCIATES - ONTARIO

3535 Inland Empire Boulevard
Ontario, CA 91764
(909) 989-7771
Corporate ID #00976995

lee-associates.com



COMMERCIAL REAL ESTATE SERVICES
ONTARIO

All information furnished regarding property for sale, rental or financing is from sources deemed reliable, but no warranty or representation is made to the accuracy thereof and same is submitted to errors, omissions, change of price, rental or other conditions prior to sale, lease or financing or withdrawal without notice. No liability of any kind is to be imposed on the broker herein.