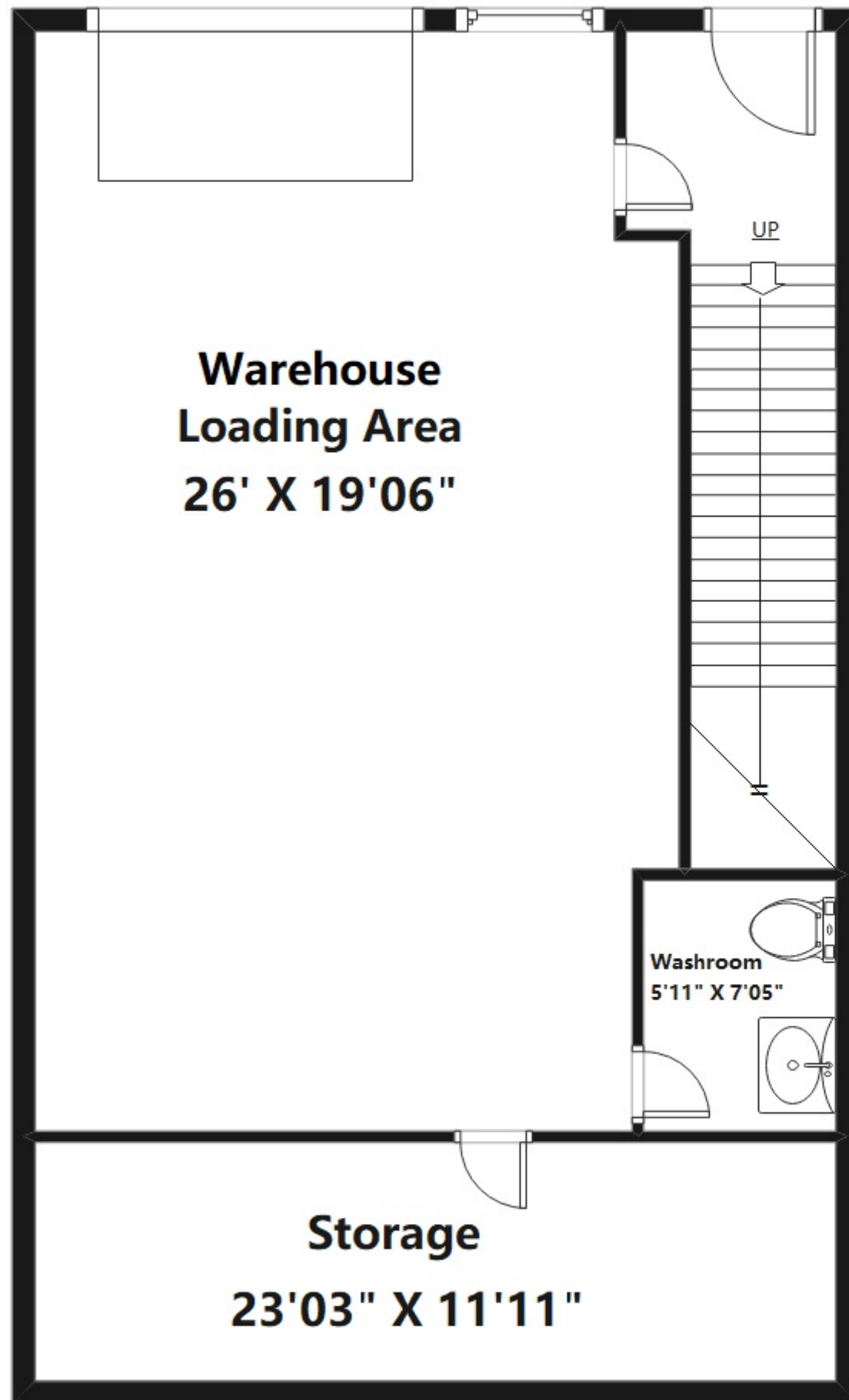


120 12500 HORSESHOE WAY, Richmond, BC

Ground Floor: 901 sq.ft
Second Floor: 839 sq.ft

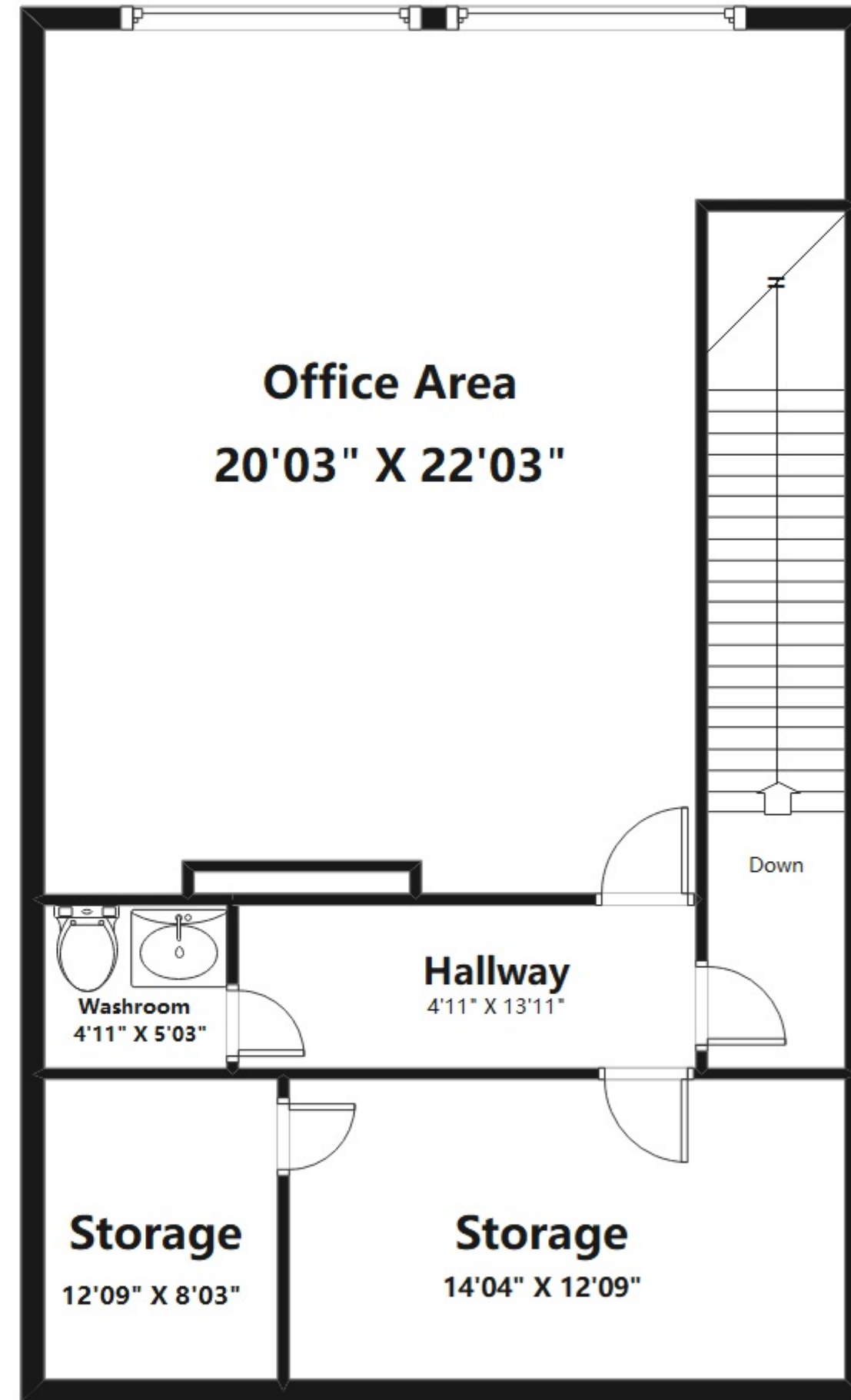
Total: 1740 sq.ft



Ground Level Floor Plan

Floor Area: 901 sq.ft

Ceiling Height: 9' - 06"



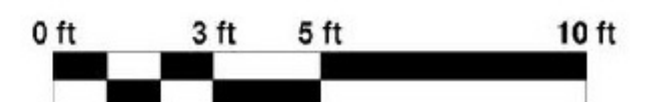
Second Level Floor Plan

Floor Area: 839 sq.ft

Ceiling Height: 11' - 4"



PLEASE NOTE: THIS FLOOR PLAN IS PROVIDED FOR MARKETING PURPOSES ONLY AND IS INTENDED AS A GUIDE.
ALL MEASUREMENTS ARE APPROXIMATE AND SHOULD BE VERIFIED BY THE BUYER IF IMPORTANT.
THE FLOOR PLAN IS NOT INTENDED FOR CONSTRUCTION, ENGINEERING, OR CONTRACTUAL PURPOSES.
THE BROKERAGE AND AGENT ASSUME NO RESPONSIBILITY FOR ITS ACCURACY.



All measurements are approximate. Buyer to verify if important.