

LAND FOR SALE OR LEASE

I-65 & SR 32 - Lebanon, Indiana 46052



MIDLAND ATLANTIC
PROPERTIES



PROPERTY OVERVIEW

1.44 Acres of Land Available For Sale or Lease at I-65 & SR 32 - Lebanon, Indiana

PROPERTY HIGHLIGHTS

- Zoned Commercial
- New Commercial and Residential Projects Under Development in the Area
- The State of Indiana has Purchased 9,000 Acres West and North of Interstate 65 to be Sold off to Manufacturing, R + D Facilities and Corporate Campuses as Part of their LEAP Lebanon Innovation District
- Eli Lilly has Purchased 600 Acres North of this Site and they are Soon to be Under Construction on a \$2.1 Billion Facility that will Bring 500 New Jobs to the Lebanon Market

DEMOGRAPHICS

	3 MILES	5 MILES
Total Population	18,281	20,441
Average HH Income	\$84,167	\$88,375
Businesses	781	825
Employees	8,739	9,118

TRAFFIC COUNTS

I-65	53,908
SR 32	13,768



MIDLAND ATLANTIC PROPERTIES

Indianapolis Office
3801 East 82nd Street, Suite B
Indianapolis, IN 46240

MIDLANDATLANTIC.COM

JEFF HUBLEY

Direct: 317.597.1713
Cell: 317.590.7588
jhublej@midlandatlantic.us

DEVELOPMENT • BROKERAGE • ACQUISITIONS • MANAGEMENT

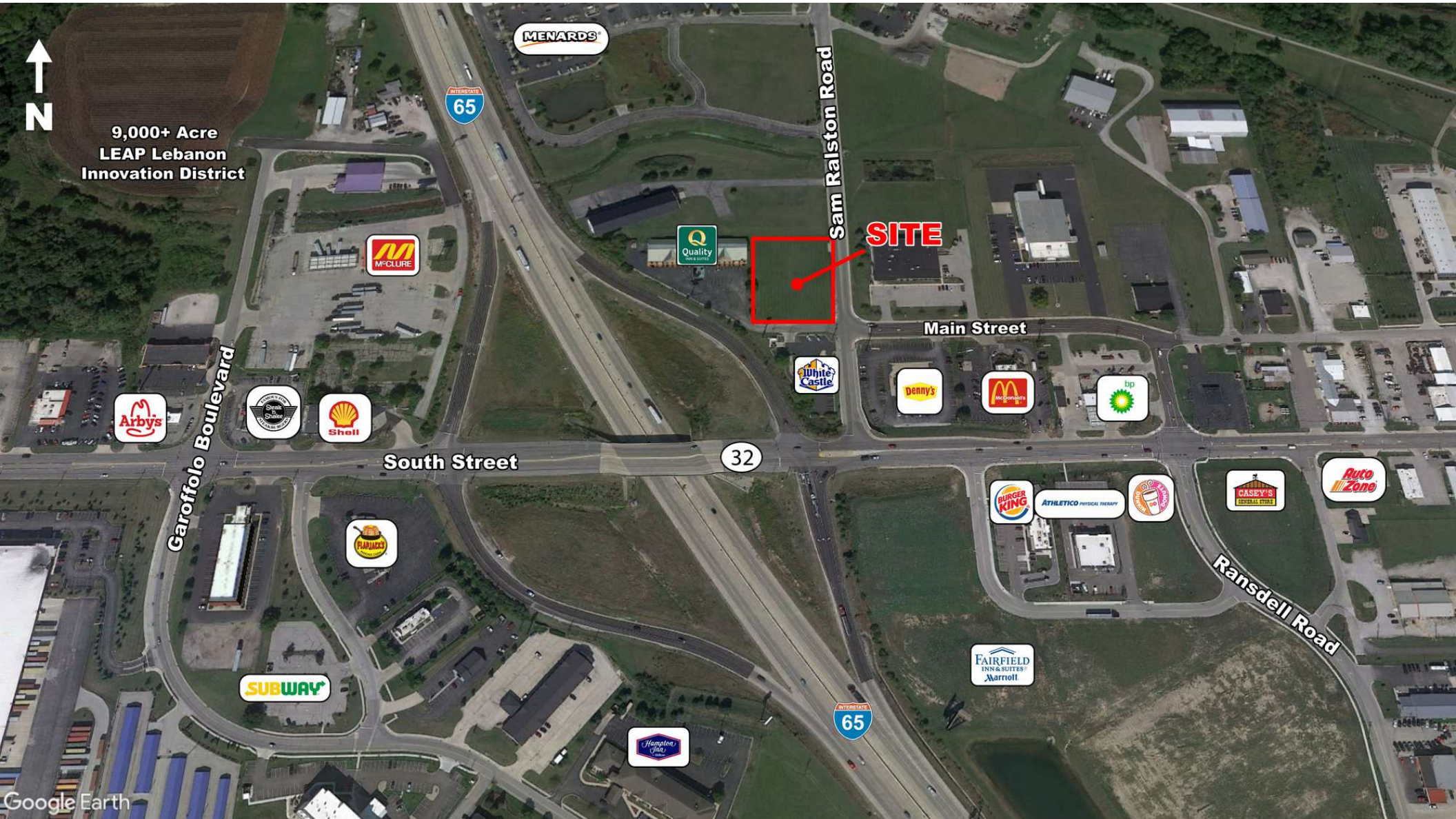
Information contained herein has been obtained from sources deemed reliable but is not guaranteed and is subject to change without notice.

LAND FOR SALE OR LEASE

I-65 & SR 32 - Lebanon, Indiana 46052



MIDLAND ATLANTIC
PROPERTIES

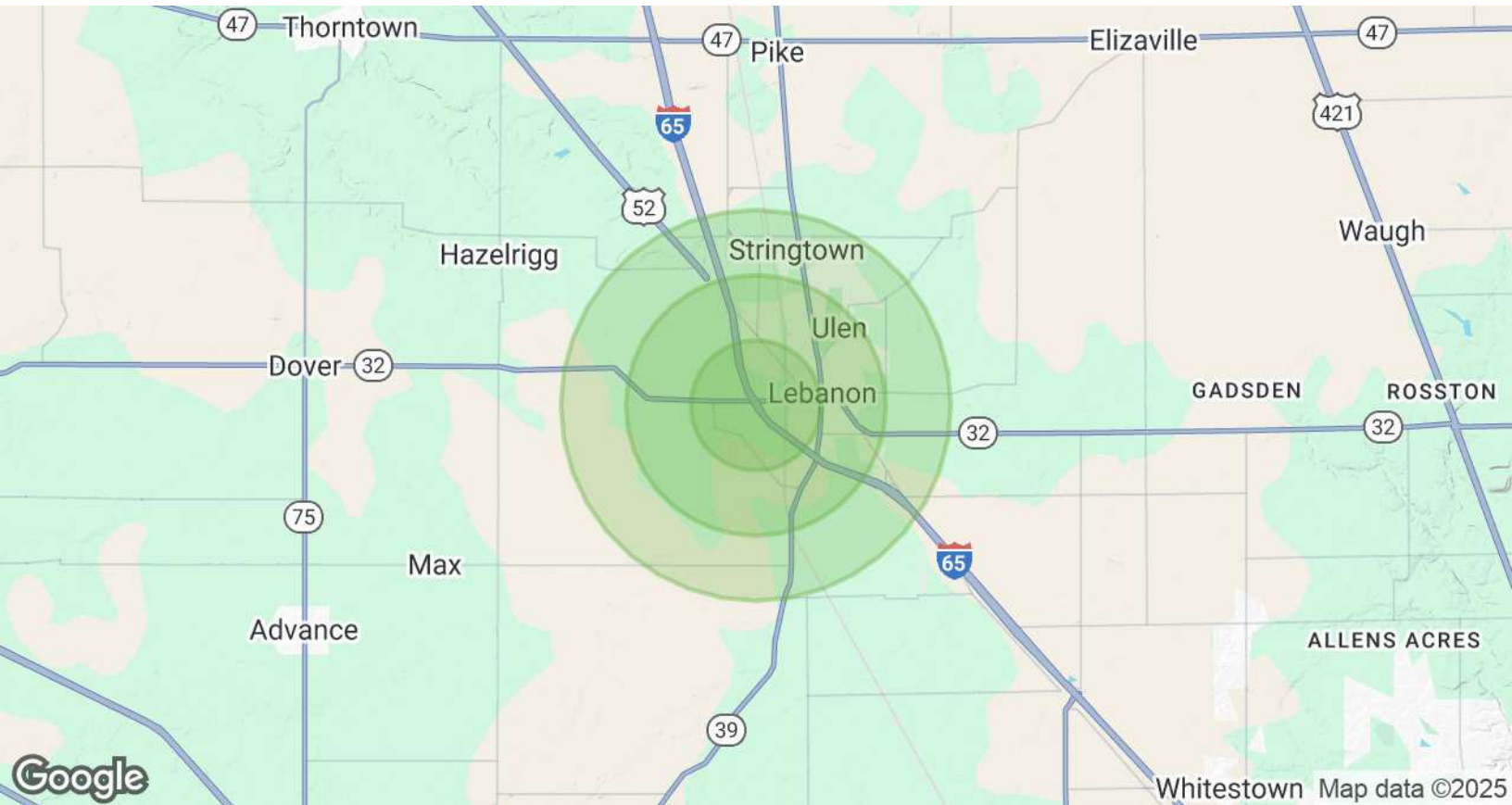


LAND FOR SALE OR LEASE

I-65 & SR 32 - Lebanon, Indiana 46052



MIDLAND ATLANTIC
PROPERTIES



POPULATION & HOUSING

	3 MILES	5 MILES	7 MILES
Total Population	18,281	20,441	23,149
Projected Annual Growth (2023-2028)	0.8%	0.9%	1.0%
Total Households	7,826	8,633	9,650
Median Home Value	\$228,271	\$234,754	\$244,345

INCOME & BUSINESS

	3 MILES	5 MILES	7 MILES
Average HH income	\$84,167	\$88,375	\$91,739
Daytime Population (16+ years)	13,246	14,278	16,697
Total Businesses	781	825	998
Total Employees	8,739	9,118	10,816

MIDLAND ATLANTIC PROPERTIES

Indianapolis Office
3801 East 82nd Street, Suite B
Indianapolis, IN 46240

JEFF HUBLEY

Direct: 317.597.1713
Cell: 317.590.7588
jhublej@midlandatlantic.us

MIDLANDATLANTIC.COM

DEVELOPMENT • BROKERAGE • ACQUISITIONS • MANAGEMENT

Information contained herein has been obtained from sources deemed reliable but is not guaranteed and is subject to change without notice.